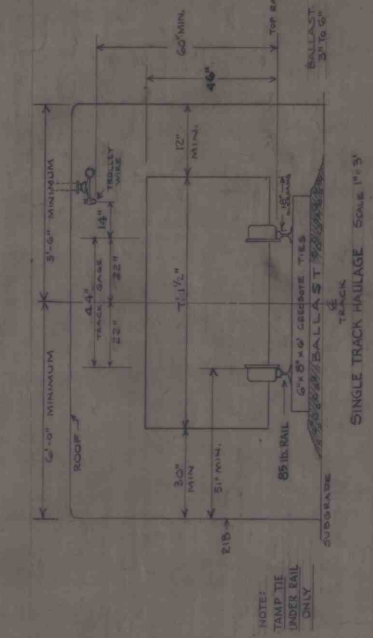
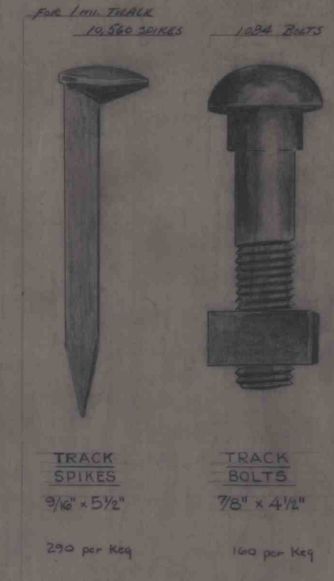
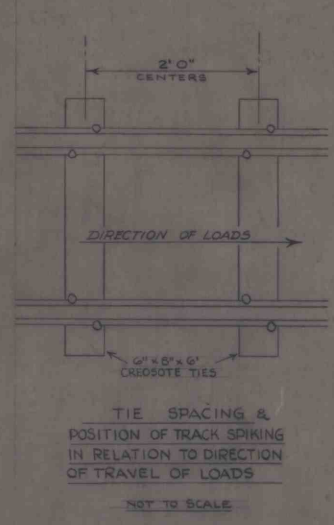
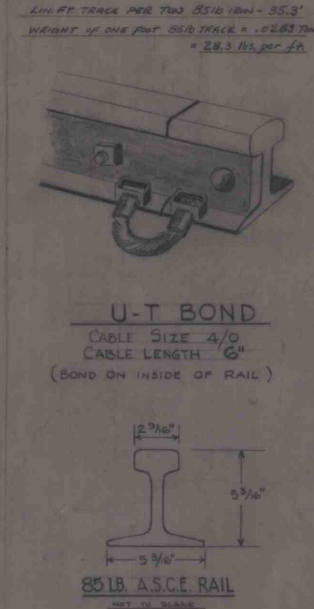
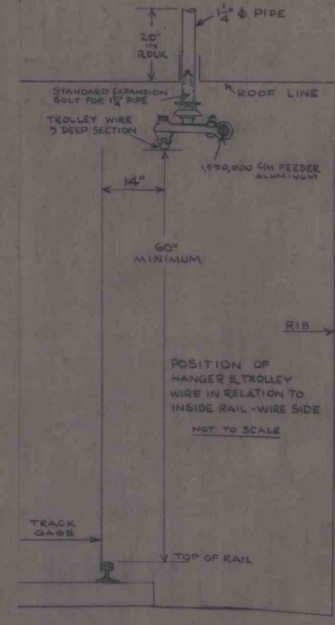
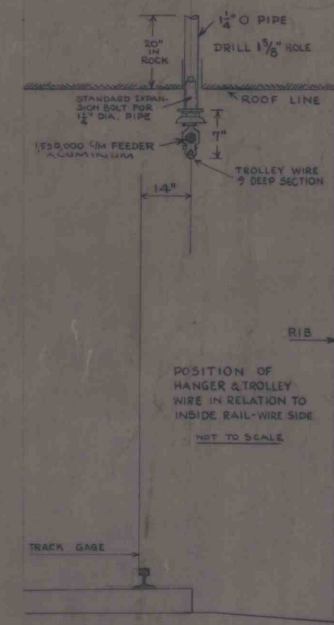
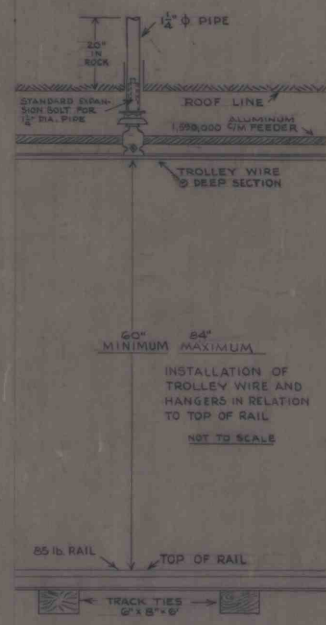


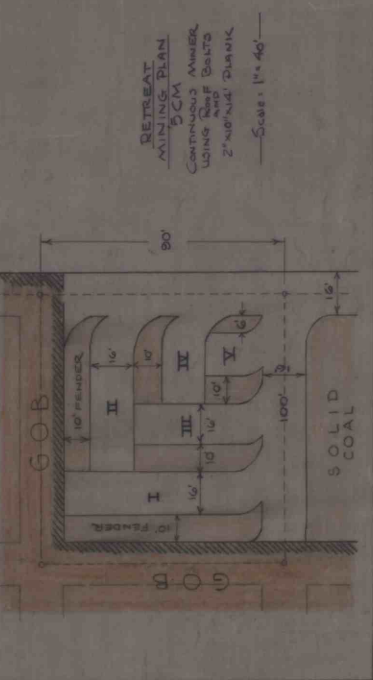
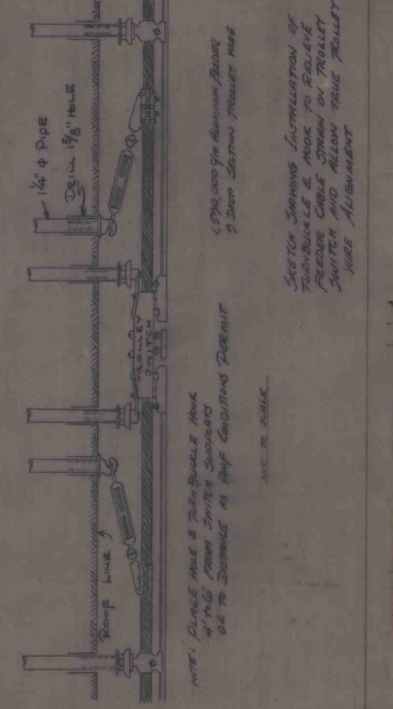
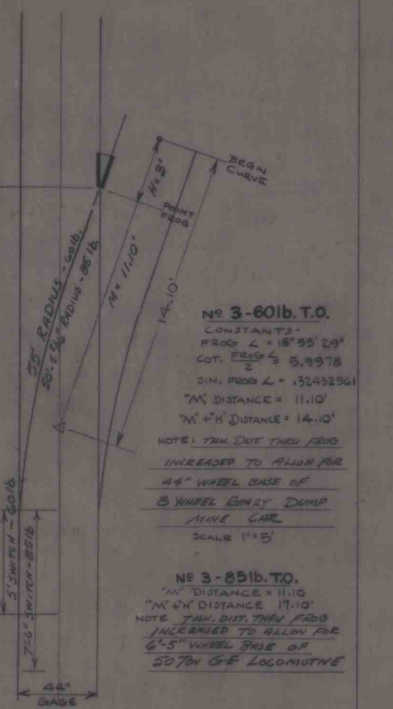
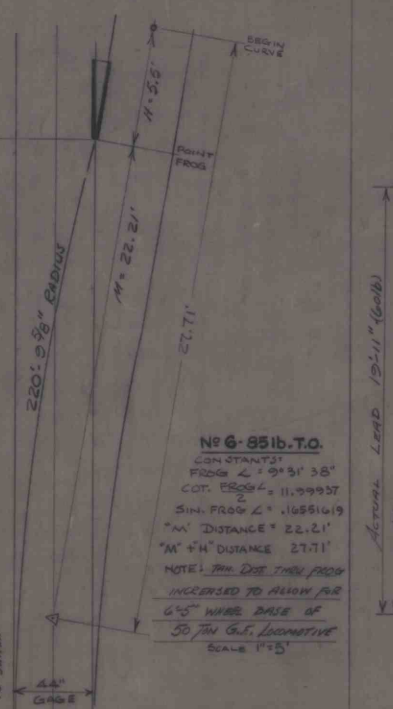
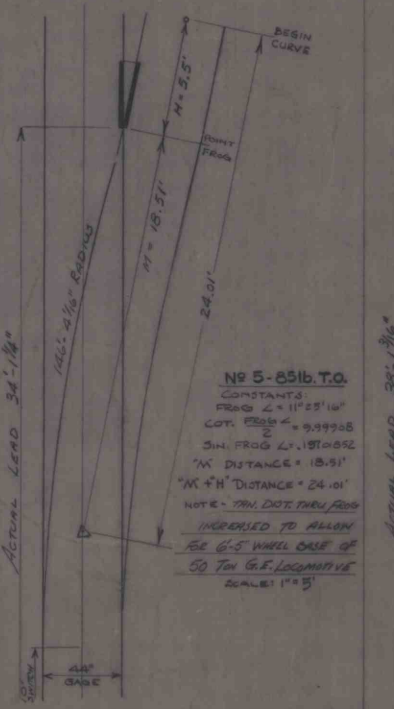
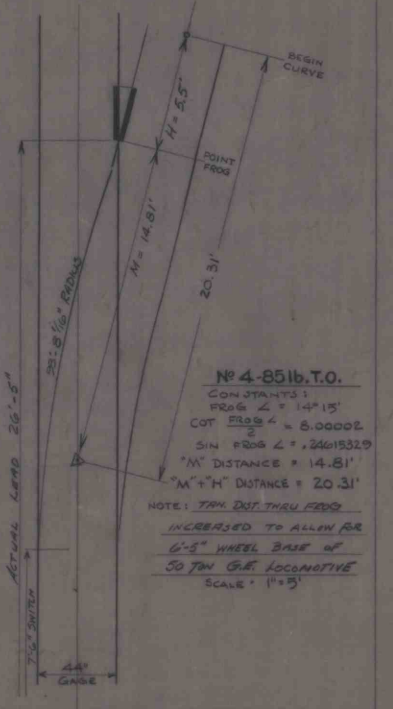
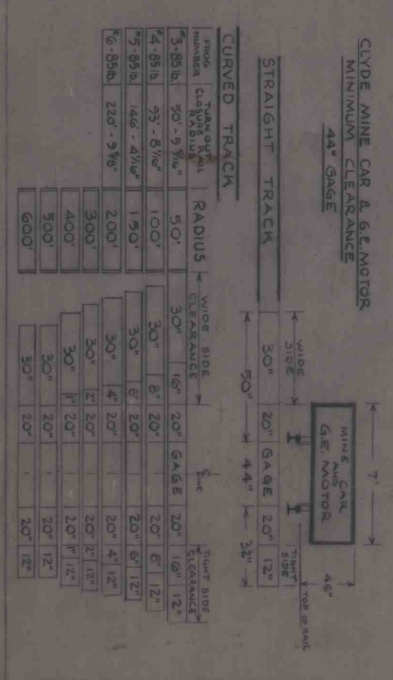
RADIUS CURVE	DISTANCE BETWEEN HANGERS	TRACK GAUGE
50'	3'	44 1/2"
100	4'	44 1/2"
200	4.5'	44 1/2"
300	5'	44 1/2"
400	5.5'	44 1/2"
500	6'	44 1/2"

STRAIGHT TRACK 15' 44"



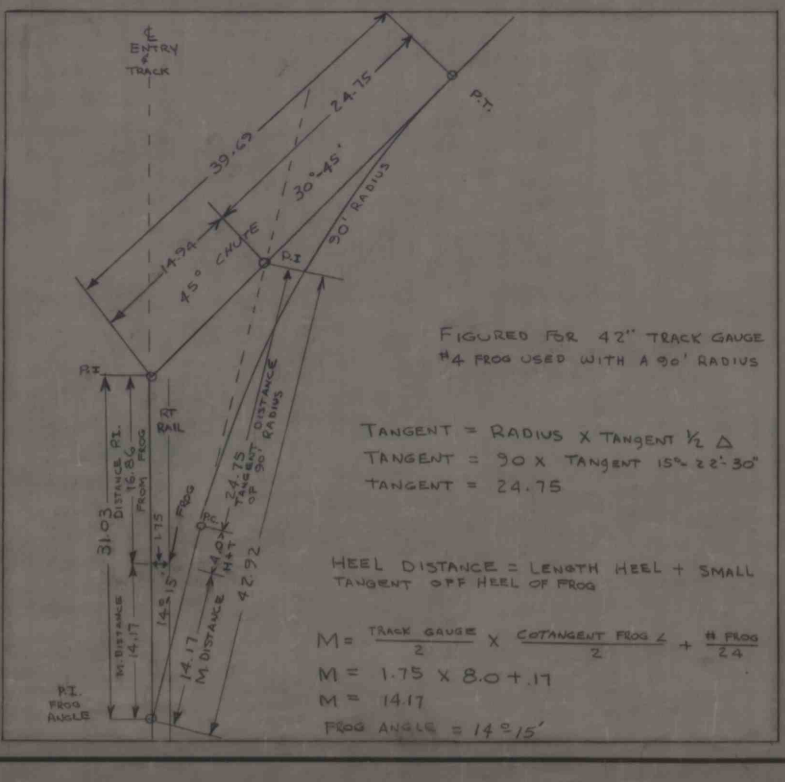
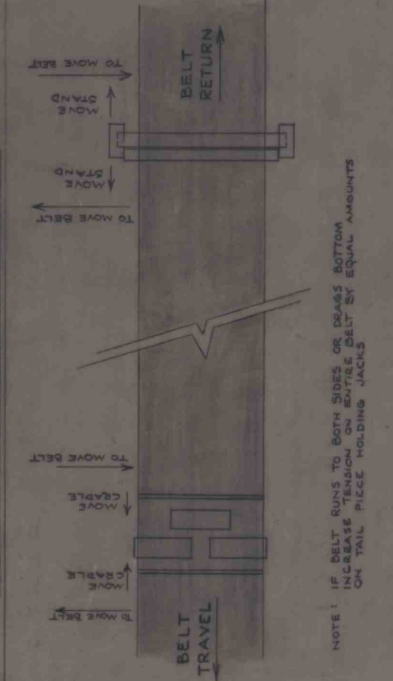
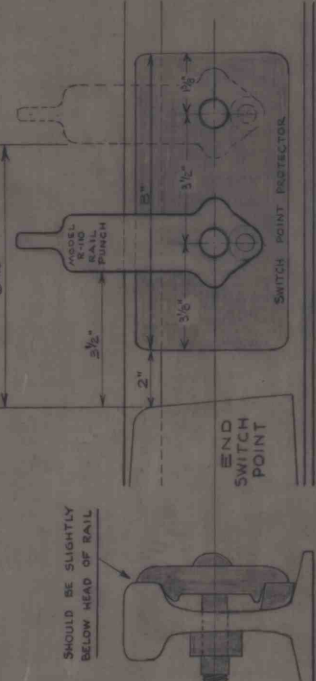
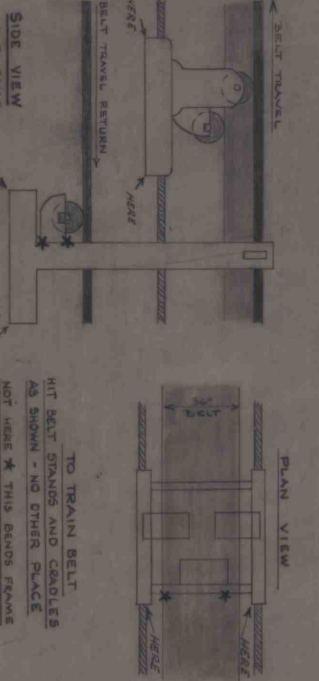
NO. OF SETS	PROG. ANGLE	LENGTH OF HEEL	TOTAL
N# 4	11° 15' 10"	1'-11"	2'-6"
N# 5	11° 25' 16"	1'-5"	4'-0"
N# 6	11° 35' 22"	1'-10"	5'-3 1/2"

RADIUS	SUPERELEVATE	M.P.H.
A - 150	2.29"	10.8
B - 150	3.479"	13.3
C - 200	2.807"	13.8
D - 220	1.932"	10.7
E - 265	1.203"	10.4
F - 270	2.14"	14.0
G - 300	1.61"	12.8
H - 450	0.723"	10.9
I - 450	0.808"	11.1
J - 500	0.755"	11.3



RADIUS	MINIMUM CLEARANCE
90'	10'
100'	8'
200'	6'
300'	5'
400'	4'
500'	3'

- A - 3/8 BA DIAGONAL LOADED TRACK
- B - 3/8 BA DIAGONAL EMPTY TRACK INTERSECTION
- C - 1/2" CURVE CUTTER SHUNT-ARM SHUNT TRACK
- D - 3/8 BA DIAGONAL INTERSECTION
- E - 1/2" FLAT 3/8 BA INTERSECTION
- F - 1/2" FLAT 3/8 BA CURVE WBY 3/8 BA
- G - MAIN HAULAGE R.C. DIAGONAL HAULAGE
- H - 1/2" FLAT TO 6 FLAT CURVE
- I - 1/2" FLAT NEAR 3/8 BA TOWARDS 6 FLAT
- J - 1/2" FLAT LT SIDE TO 3/8 BA



ENGINEERING DRAWING COMPUTER INPUT									
DRAWING NUMBER					SEARCH ARGUMENT				
ALPHA	NUMERIC	ISSUE	DIST.	CAT.	DEPT.	ITEM	DOC. TYPE	NO.	DATE
A	592	12	14	11	11	11	11	11	11
DRAWING TITLE					HAULAGE CONSTRUCTION STND.				

NO. RECD.	NO. RECD.	MARK	MATERIAL	DESCRIPTION	REMARKS	EST. NO.
BILL OF MATERIAL						
REFERENCE DRAWINGS:						
C-509						

REPUBLIC STEEL CORPORATION									
DISTRICT									
CLYDE MINE									
DEPARTMENT ENGINEERING									
CLYDE HAULAGE CONSTRUCTION STANDARDS									
S. MINING OPERATIONS									
SCALE									
DRAWN W.M.C. DATE 12/11/58									
CHECKED DATE									
APPROVED DATE									
NO. 1					A-502				
NO. 2									
NO. 3									
NO. 4									
NO. 5									
NO. 6									
NO. 7									
NO. 8									
NO. 9									
NO. 10									