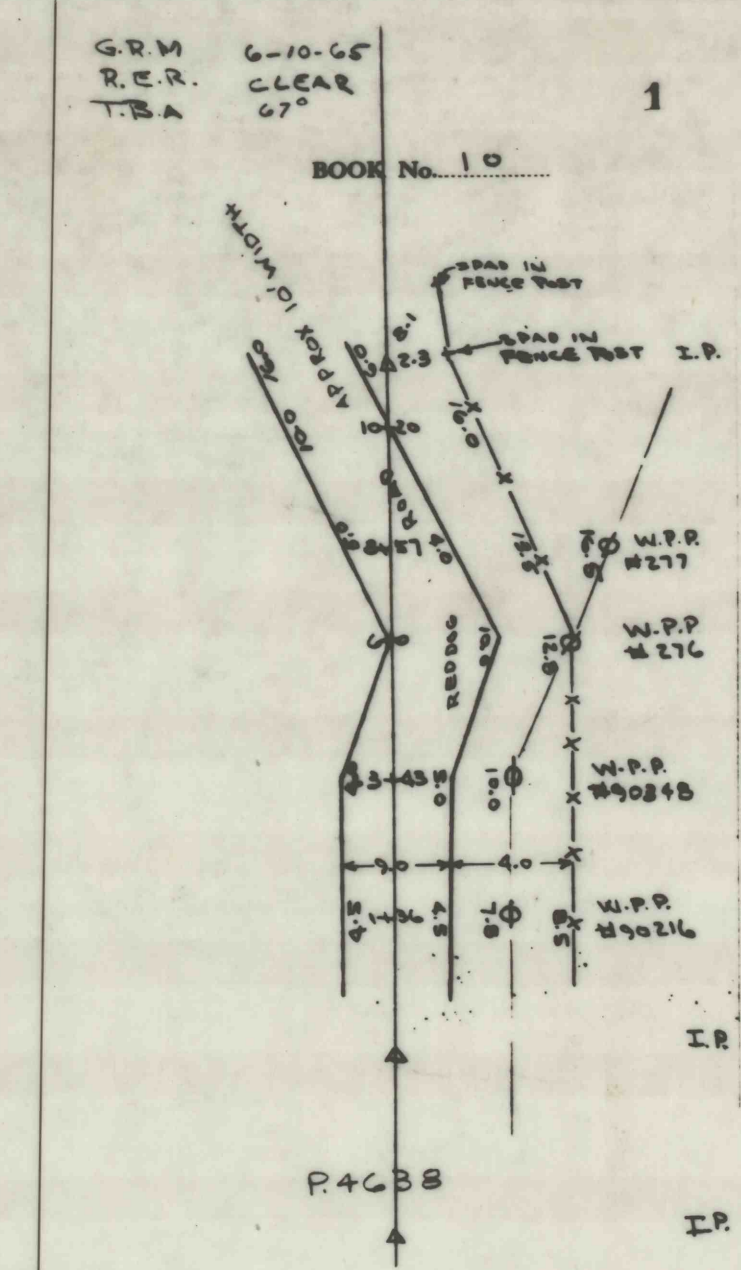


LOCATION LINE OVER MAIN NORTH HEADINGS (EXAMPLE)

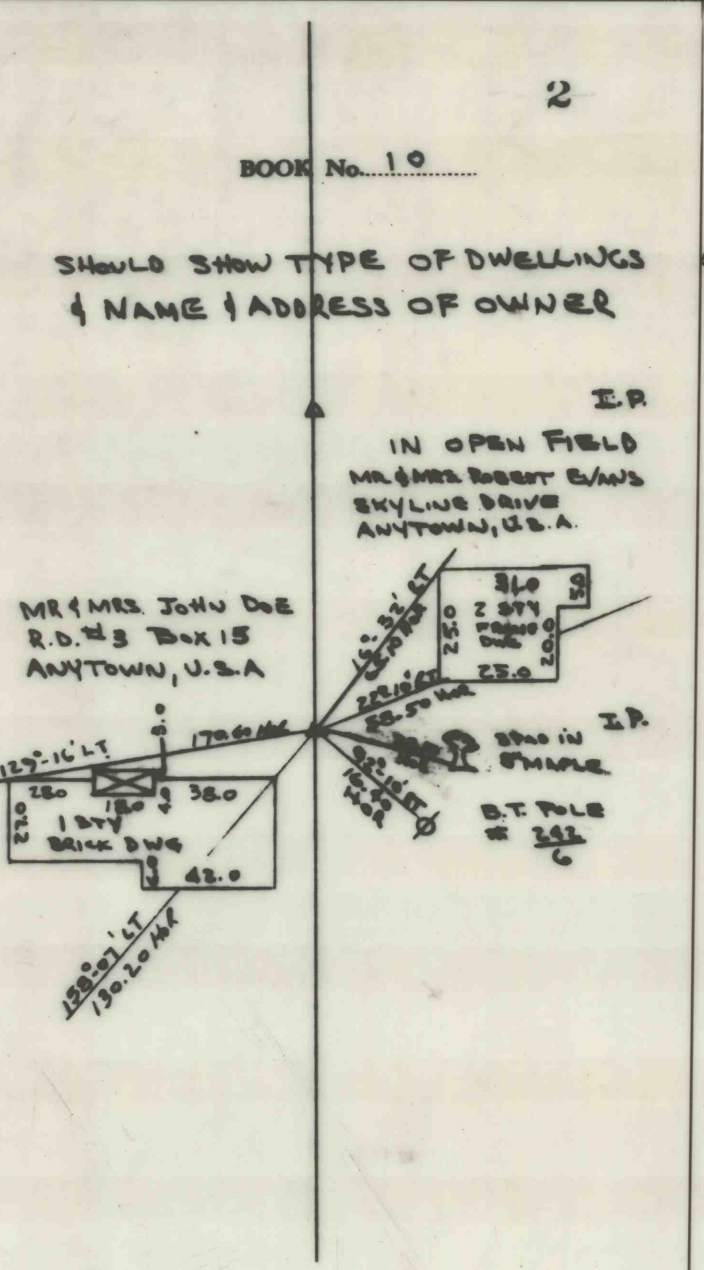
BOOK No. 10

A-347	AVG 7-41-30 RT
(1)	7-41-30 RT
(2)	15-23-00
N 8-31-21 E	
A-348	AVG 30-05-30 RT
(1)	30-05-30 RT
(2)	60-11-00
N 21-28-09 W	



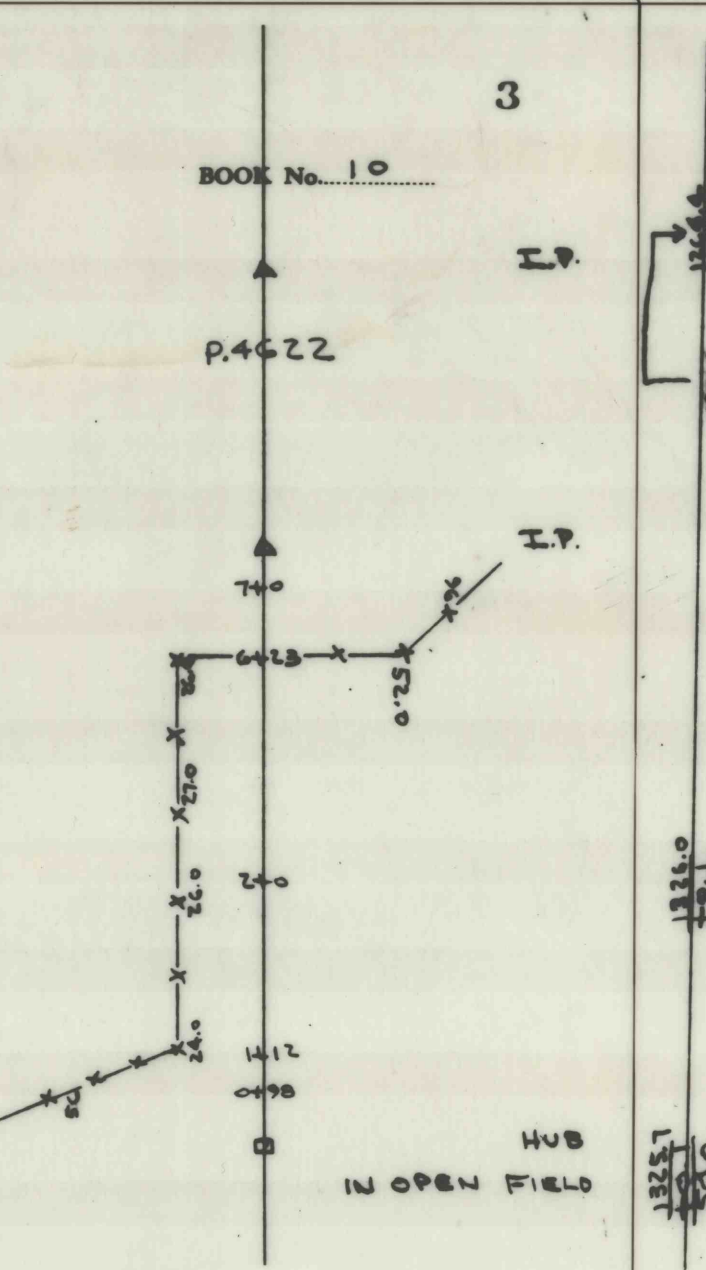
BOOK No. 10

A-349	AVG 4-21-00 LT
(1)	4-21-00 LT
(2)	8-42-00
N 30-26-21 E	
A-348	AVG 14-07-30 RT
(1)	14-07-30 RT
(2)	28-15-00
N 16-18-51 E	



BOOK No. 10

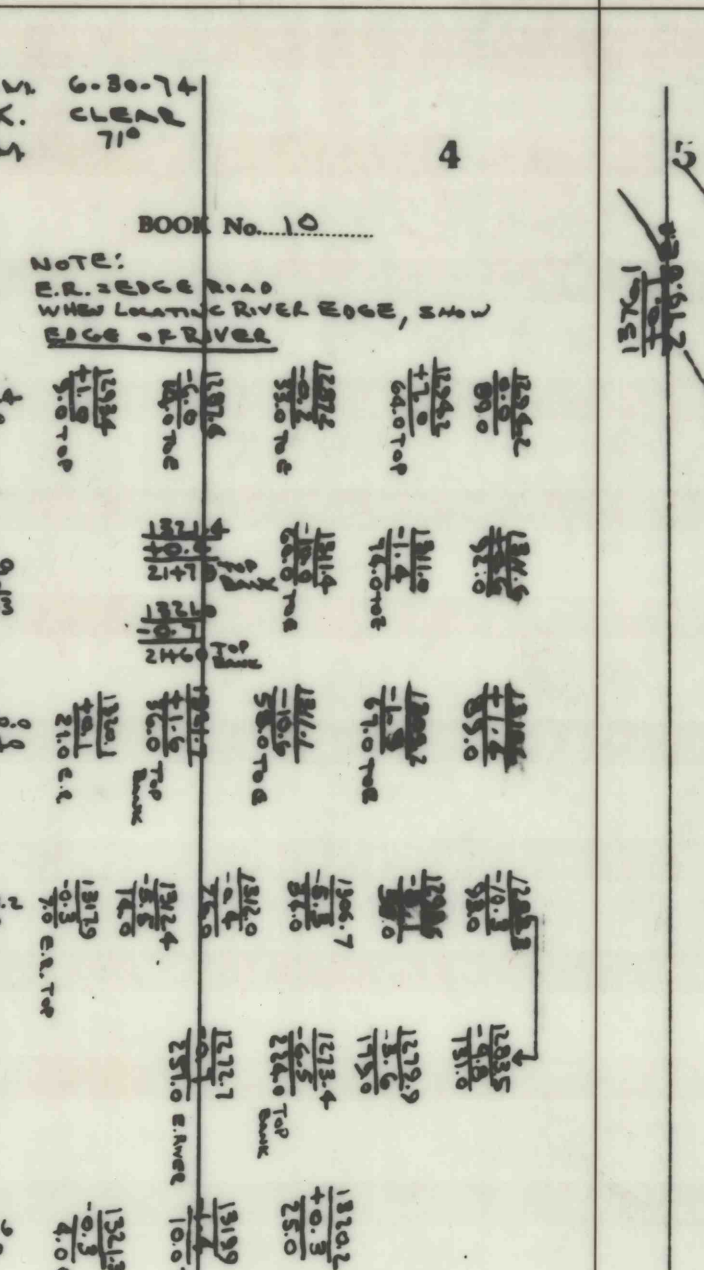
A-350	AVG 0-20-30 LT
(1)	0-20-30 LT
(2)	0-41-00
N 25-44-51 E	



EXAMPLE OF X-SECTIONS AT LT OF BASELINE

BOOK No. 10

LINE 1	LINE 2	LINE 3	LINE 4	LINE 5	LINE 6	LINE 7	LINE 8	LINE 9	LINE 10
100'	100'	100'	100'	100'	100'	100'	100'	100'	100'



EXAMPLE OF X-SECTIONS AT RT OF BASELINE

BOOK No. 10

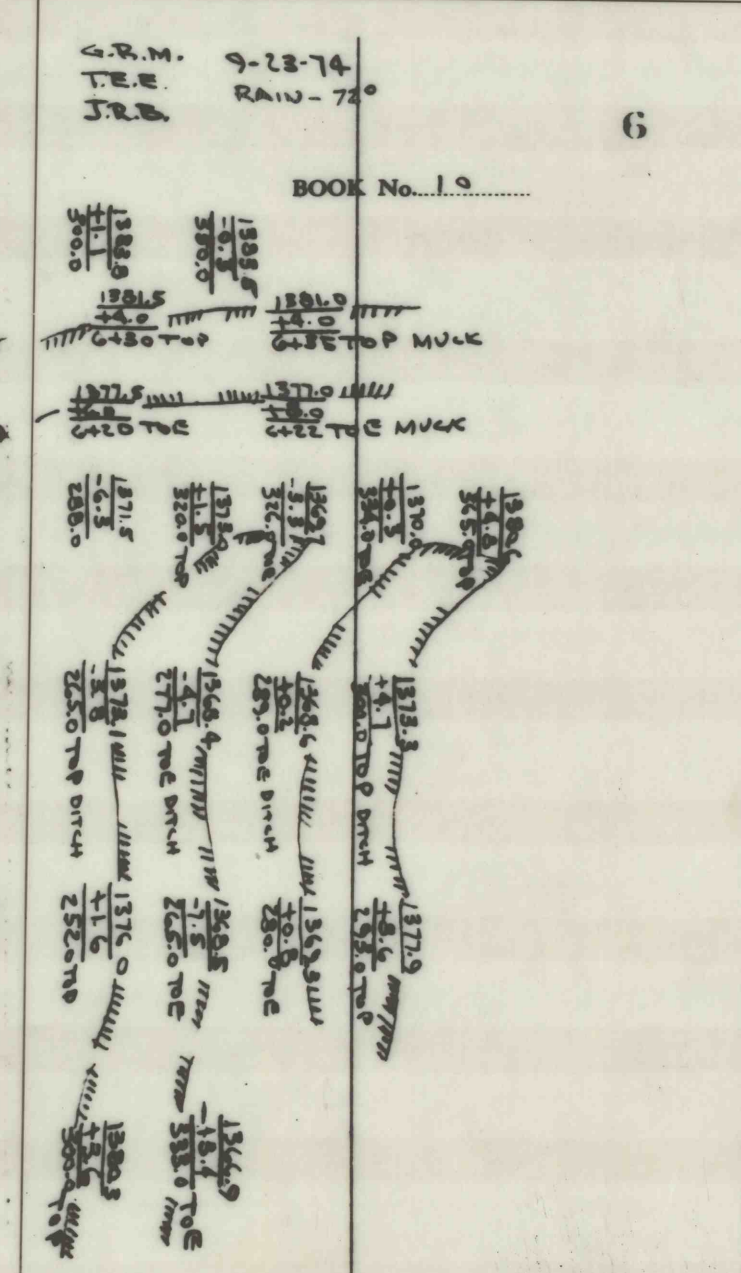
LINE 1	LINE 2	LINE 3	LINE 4	LINE 5	LINE 6	LINE 7	LINE 8	LINE 9	LINE 10
100'	100'	100'	100'	100'	100'	100'	100'	100'	100'



EXAMPLE OF X-SECTIONS AT RT OF BASELINE

BOOK No. 10

LINE 1	LINE 2	LINE 3	LINE 4	LINE 5	LINE 6	LINE 7	LINE 8	LINE 9	LINE 10
100'	100'	100'	100'	100'	100'	100'	100'	100'	100'



STADIA ON REFUSE DUMP

BOOK No. 10

STA	HT	HT	HT	HT	HT	HT	HT	HT	HT
1	10.12	10.12	10.12	10.12	10.12	10.12	10.12	10.12	10.12
2	10.12	10.12	10.12	10.12	10.12	10.12	10.12	10.12	10.12
3	10.12	10.12	10.12	10.12	10.12	10.12	10.12	10.12	10.12
4	10.12	10.12	10.12	10.12	10.12	10.12	10.12	10.12	10.12
5	10.12	10.12	10.12	10.12	10.12	10.12	10.12	10.12	10.12
6	10.12	10.12	10.12	10.12	10.12	10.12	10.12	10.12	10.12
7	10.12	10.12	10.12	10.12	10.12	10.12	10.12	10.12	10.12
8	10.12	10.12	10.12	10.12	10.12	10.12	10.12	10.12	10.12
9	10.12	10.12	10.12	10.12	10.12	10.12	10.12	10.12	10.12
10	10.12	10.12	10.12	10.12	10.12	10.12	10.12	10.12	10.12
11	10.12	10.12	10.12	10.12	10.12	10.12	10.12	10.12	10.12
12	10.12	10.12	10.12	10.12	10.12	10.12	10.12	10.12	10.12
13	10.12	10.12	10.12	10.12	10.12	10.12	10.12	10.12	10.12
14	10.12	10.12	10.12	10.12	10.12	10.12	10.12	10.12	10.12

DESC OF SHOTS

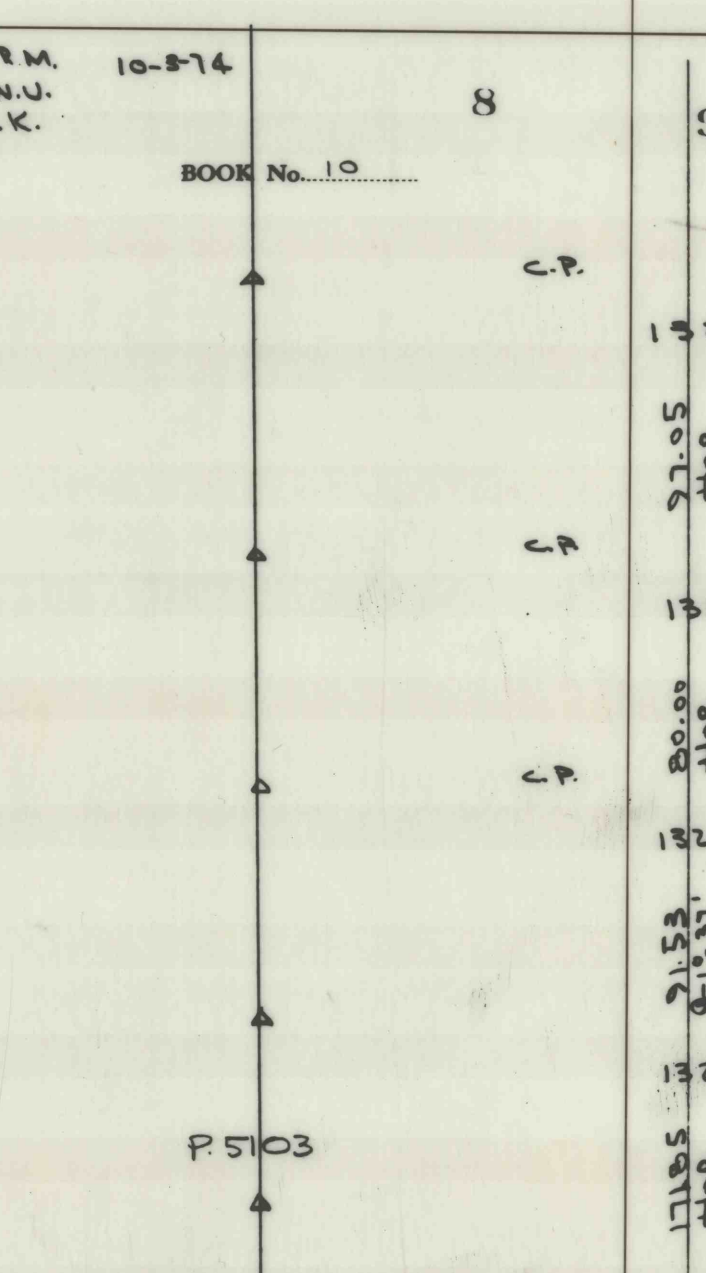
BOOK No. 10

1	86-49-00 RT
(1)	86-49-00 RT
(2)	113-38-00
N 67-49-13 W	
AVG	2-22-00 LT
(1)	2-22-00 LT
(2)	4-42-00
N 65-23-13 W	
AVG	83-32-00 LT
(1)	83-32-00 LT
(2)	167-04-00
N 18-06-47 E	
AVG	1-47-00 LT
(1)	1-47-00 LT
(2)	3-36-00
N 19-55-47 E	

TIE LINE - 13 WEST OF 8 MAIN NORTH HOGS (EXAMPLE)

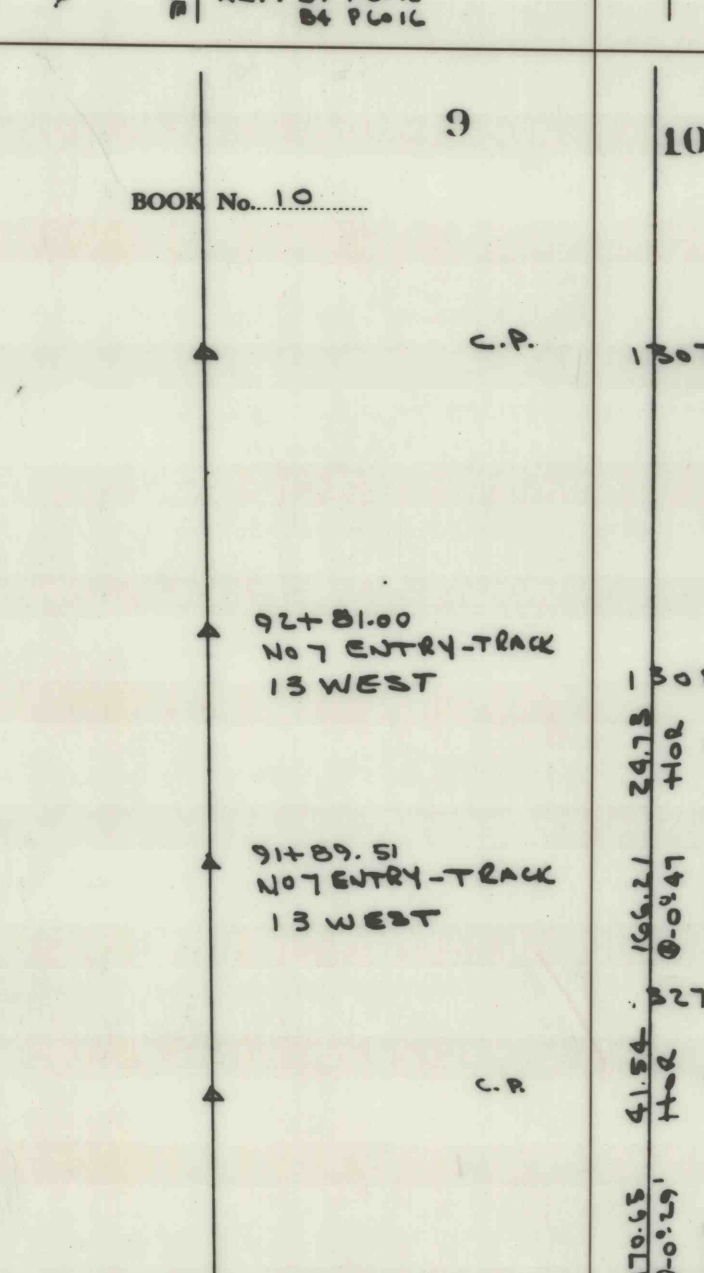
BOOK No. 10

1322	AVG 86-49-00 RT
(1)	86-49-00 RT
(2)	113-38-00
N 67-49-13 W	
1321	AVG 2-22-00 LT
(1)	2-22-00 LT
(2)	4-42-00
N 65-23-13 W	
1320	AVG 83-32-00 LT
(1)	83-32-00 LT
(2)	167-04-00
N 18-06-47 E	
1309	AVG 1-47-00 LT
(1)	1-47-00 LT
(2)	3-36-00
N 19-55-47 E	



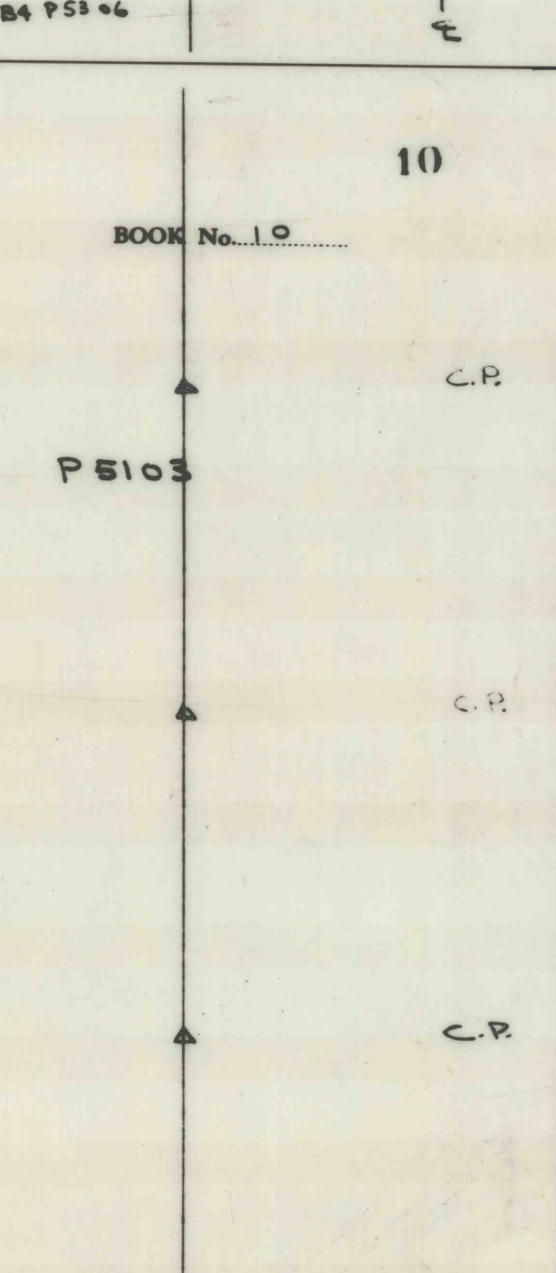
BOOK No. 10

1326	AVG 64-23-30 RT
(1)	64-23-30 RT
(2)	118-47-00
N 43-37-13 E	
AVG	24-27-00 RT
(1)	24-27-00 RT
(2)	57-54-00
N 70-04-13 E	
AVG	0-21-00 RT
(1)	0-21-00 RT
(2)	0-42-00
N 70-25-33 E	
AVG	90-35-00 RT
(1)	90-35-00 RT
(2)	181-10-00
N 18-57-47 E	



BOOK No. 10

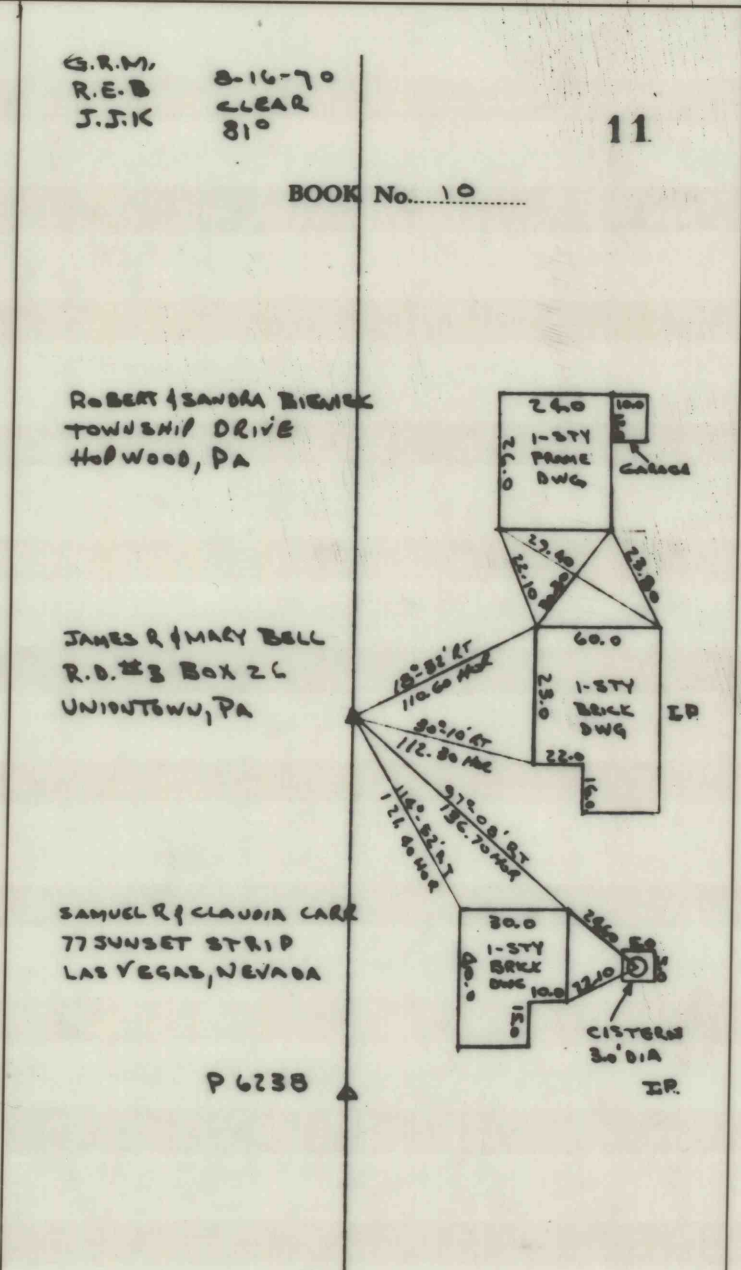
1307	AVG 3-19-55-37 W
(1)	3-19-55-37 W
(2)	17-55-47 W
N 0-00-10 TIE	
1306	AVG 1-50-20 RT
(1)	1-50-20 RT
(2)	3-40-40
N 318-05-17 W	
AVG	2-41-00 LT
(1)	2-41-00 LT
(2)	5-22-00
N 20-46-17 W	



EXAMPLE OF HOUSE LOCATIONS WITH TAPE

BOOK No. 10

A-593	3-15-44-26 W
A-592	3-15-44-26 W



TYPICAL LEVEL NOTES

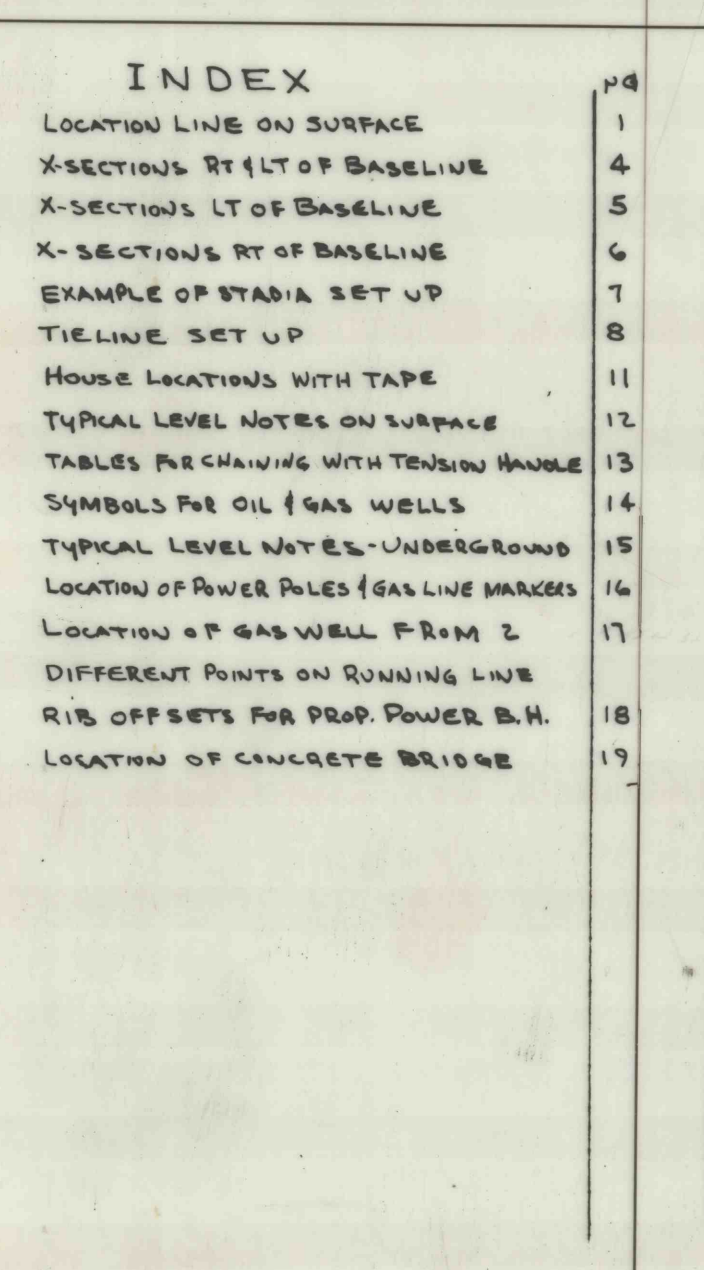
BOOK No. 10

STA	B.M.	H.I.	F.S.	ELEV.
T.P.	12.11	795.60		0.20 795.40
T.P.	11.65	808.19		0.55 807.64
T.P.	11.96	820.54		0.41 820.13
T.P.	12.47	828.80		0.47 828.33
B.M.	4.75	824.88		4.3 822.4
B.M.	1.0			4.6 822.3
B.M.	1.40			5.1 821.8
B.M.	1.48			5.5 821.4
B.M.	2.40			5.7 821.2
B.M.	2.45			6.2 817.7
B.M.				8.45 818.59

INDEX

BOOK No. 10

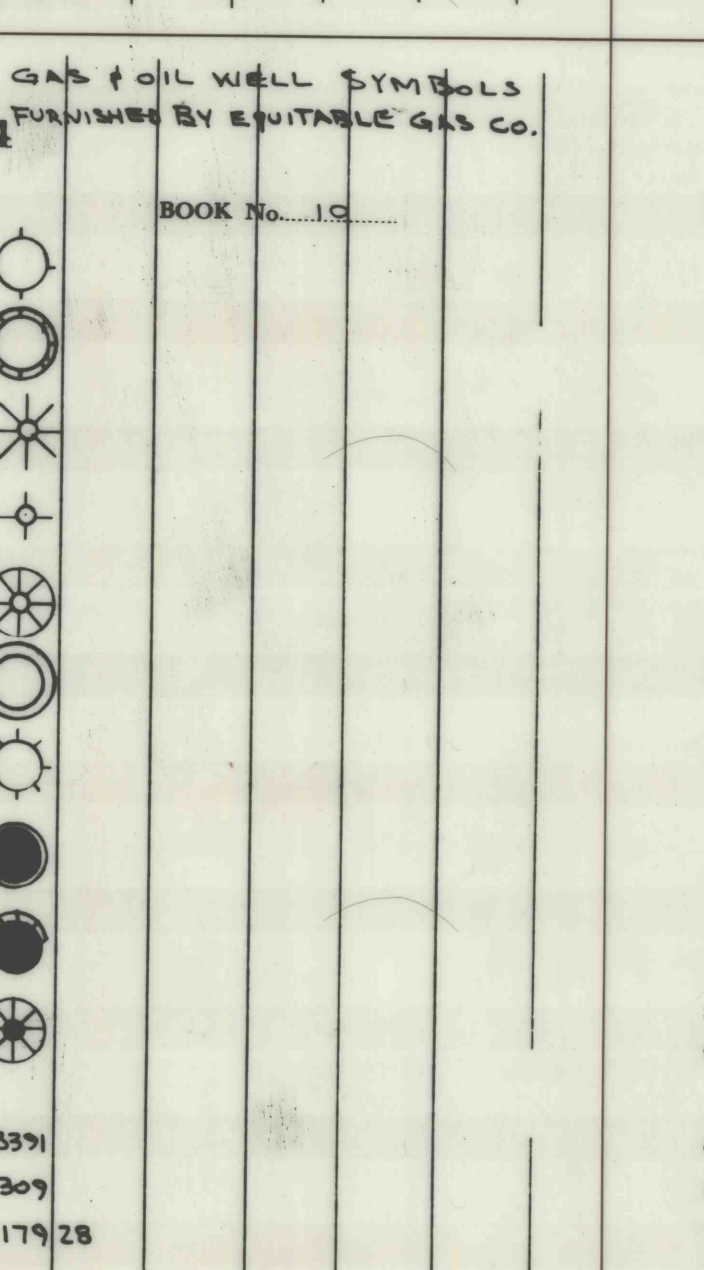
0	0	0	0	0	0	0	0	0	0
100'	150'	100'	100'	100'	100'	100'	100'	100'	100'



APPROX TENSION FULL SIZE CHICAGO CHAIN

BOOK No. 10

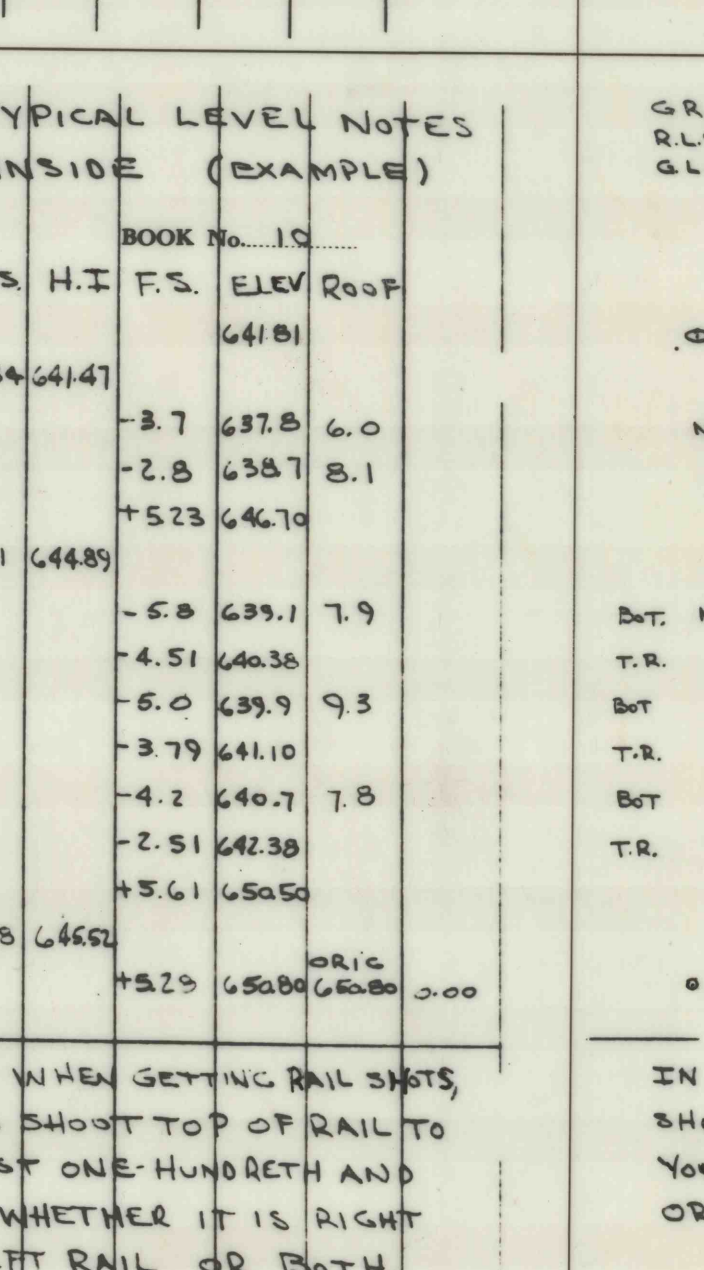
INTERVAL	SUPPORTED-BOTH ENDS	TENSION
0-300'	0-300'	40#
0-300'	0-300'	39#
0-300'	0-300'	31#
0-300'	0-300'	24#



TYPICAL LEVEL NOTES INSIDE (EXAMPLE)

BOOK No. 10

STA	B.M.	H.I.	F.S.	ELEV.	ROOF
B.M.				641.81	
B.M.				641.41	
T.P.				637.8	6.0
T.P.				638.7	5.1
T.P.				642.3	6.0
T.P.				644.8	
T.P.				639.7	7.9
T.P.				643.6	
T.P.				639.9	9.3
T.P.				641.0	
T.P.				640.7	7.8
T.P.				642.3	
T.P.				646.0	
B.M.				648.00	6.00



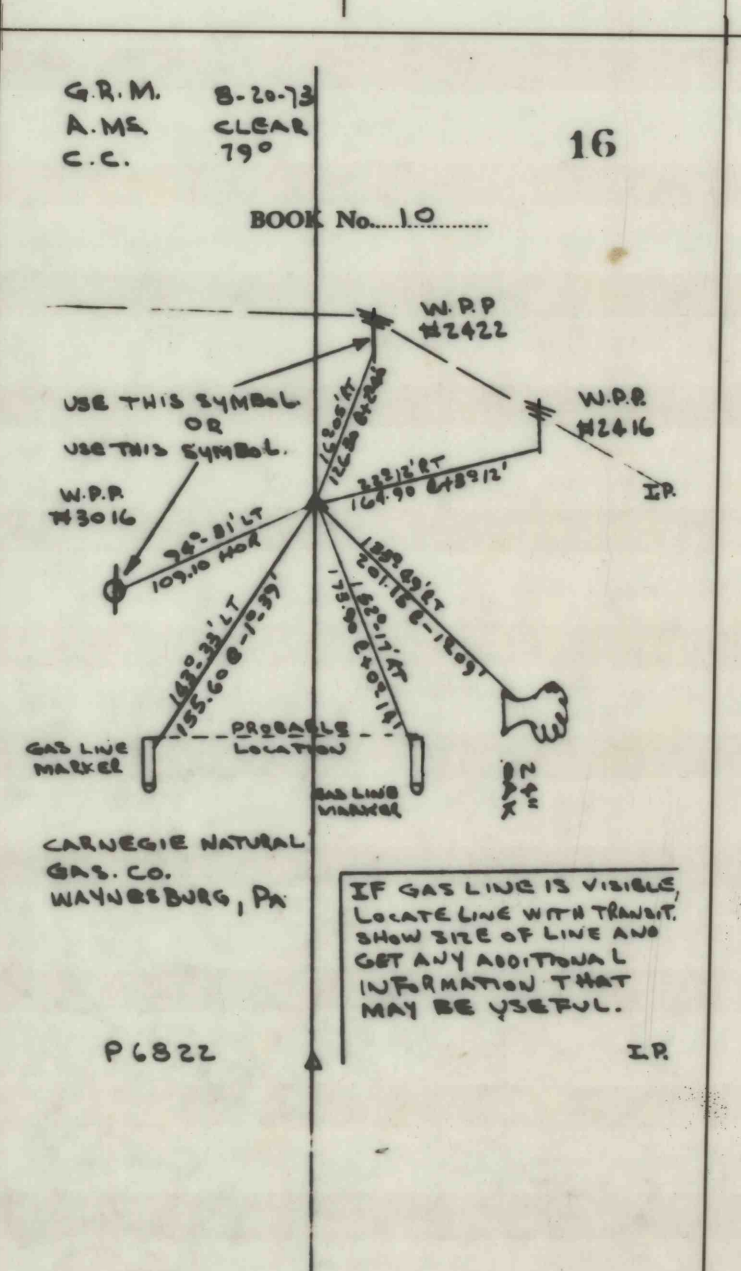
BOOK No. 10

0.574	97-01-22	LV BK 11 P 23
NO. 3	ENTRY-TRACK - S.W. MAINS	
NO. 5	ENTRY-TRACK - S.W. MAINS	
NO. 6	ENTRY-TRACK - S.W. MAINS	
NO. 7	ENTRY-TRACK - S.W. MAINS	
NO. 8	ENTRY-TRACK - S.W. MAINS	
NO. 9	ENTRY-TRACK - S.W. MAINS	
NO. 10	ENTRY-TRACK - S.W. MAINS	
NO. 11	ENTRY-TRACK - S.W. MAINS	
NO. 12	ENTRY-TRACK - S.W. MAINS	
NO. 13	ENTRY-TRACK - S.W. MAINS	
NO. 14	ENTRY-TRACK - S.W. MAINS	
NO. 15	ENTRY-TRACK - S.W. MAINS	
NO. 16	ENTRY-TRACK - S.W. MAINS	
NO. 17	ENTRY-TRACK - S.W. MAINS	
NO. 18	ENTRY-TRACK - S.W. MAINS	
NO. 19	ENTRY-TRACK - S.W. MAINS	
NO. 20	ENTRY-TRACK - S.W. MAINS	
NO. 21	ENTRY-TRACK - S.W. MAINS	
NO. 22	ENTRY-TRACK - S.W. MAINS	
NO. 23	ENTRY-TRACK - S.W. MAINS	
NO. 24	ENTRY-TRACK - S.W. MAINS	
NO. 25	ENTRY-TRACK - S.W. MAINS	
NO. 26	ENTRY-TRACK - S.W. MAINS	
NO. 27	ENTRY-TRACK - S.W. MAINS	
NO. 28	ENTRY-TRACK - S.W. MAINS	
NO. 29	ENTRY-TRACK - S.W. MAINS	
NO. 30	ENTRY-TRACK - S.W. MAINS	

LOCATION OF POWER POLE & GAS LINE MARKERS

BOOK No. 10

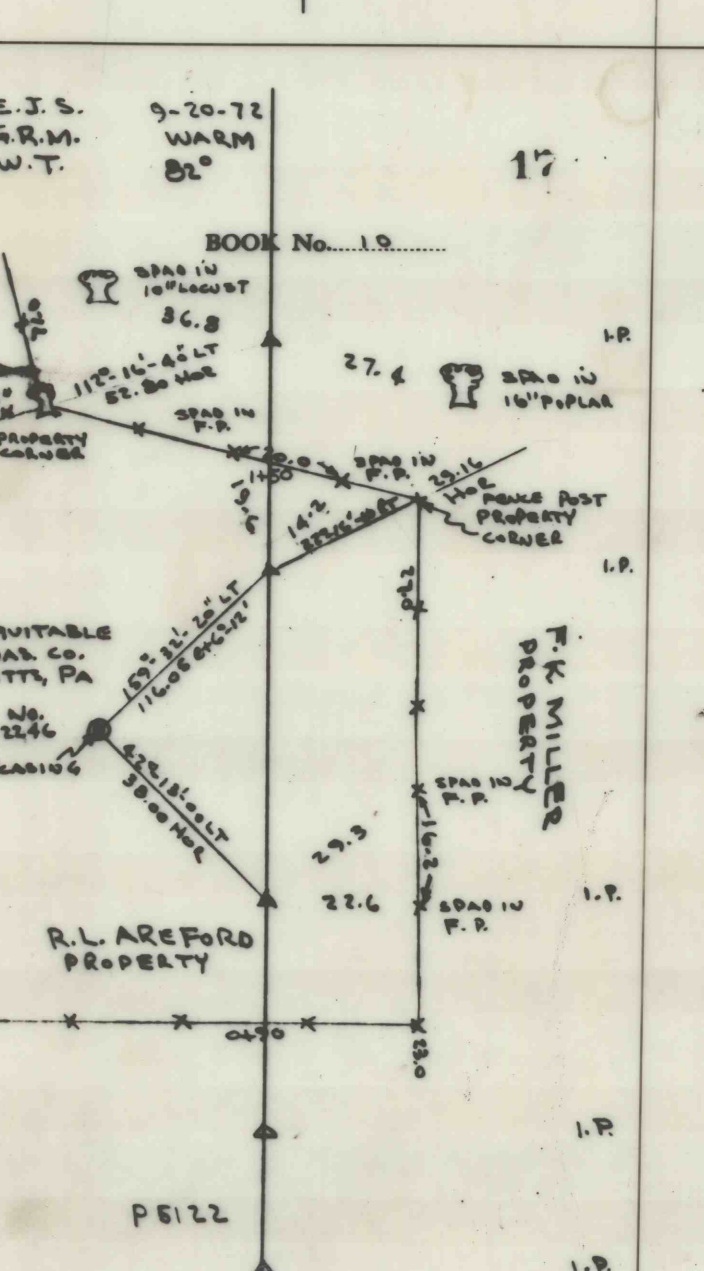
A-463	N 20-45-10 E
A-462	N 20-45-10 E



LOCATION OF GAS WELL FROM 2 DIFFERENT POINTS

BOOK No. 10

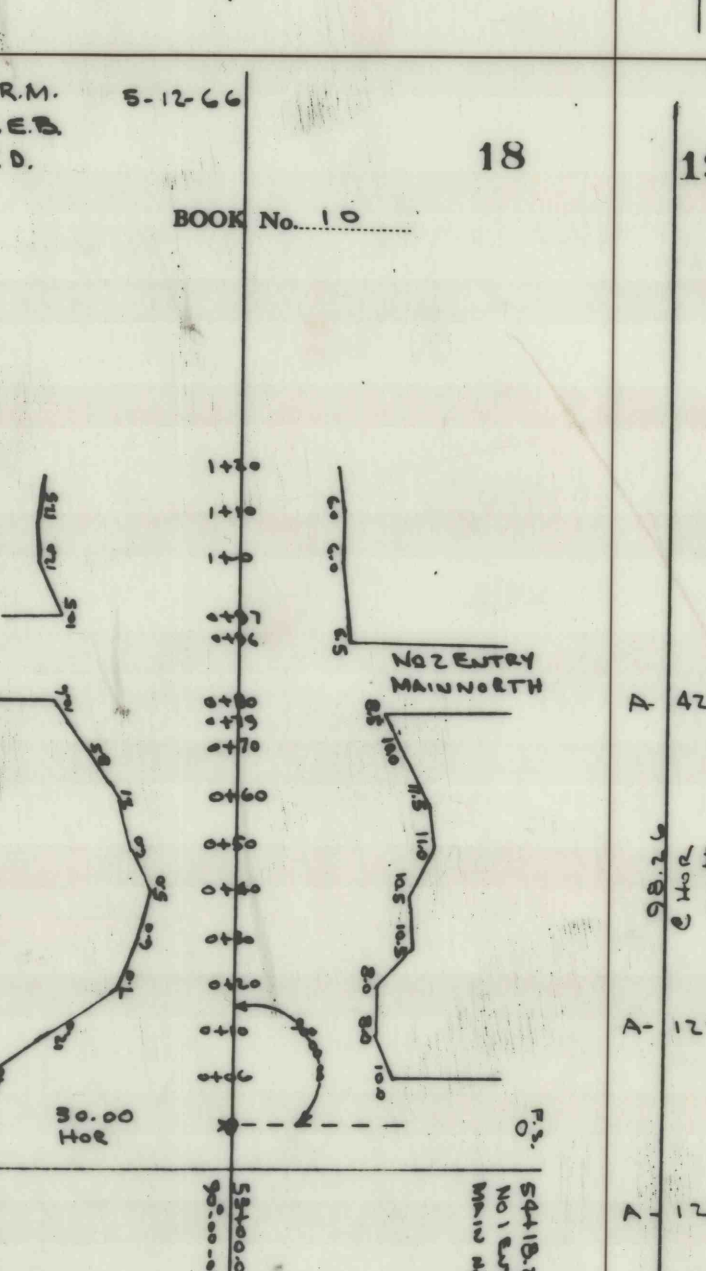
A-571	AVG 13-18-30 LT
(1)	13-18-30 LT
(2)	26-8-1-00
N 2-03-21 E	
A-576	AVG 22-36-30 LT
(1)	22-36-30 LT
(2)	45-13-00
N 24-39-51 E	
A-575	AVG 119-31-10 LT
(1)	119-31-10 LT
(2)	239-02-20
N 35-48-59 E	
A-362	AVG 3-12-20 RT
(1)	3-12-20 RT
(2)	14-24-40
N 24-01-17 E	



RID OFFSETS FOR PROPOSED POWER POLE HOLE IN A WEST 18 OFF MAIN NORTH HOGS.

BOOK No. 10

NOTE: IF TRAFFIC STATIONS HAVE PREVIOUSLY BEEN SET, THEN LAY STEEL CHAIN BETWEEN STATIONS AND AVOID USING TRANSIT. IF THERE ARE NO STATIONS AVAILABLE IN WORKING AREA AND TRANSIT IS USED, YOU MAY NOT ALWAYS BE ABLE TO TURN 90°-00-00, SO TURN AN EVEN ANGLE, RECORD THE ANGLE IN NOTES AND THEN LAY STEEL CHAIN ON LINE TO START OFFSETS.



LOCATION OF CONCRETE BRIDGE OVER CEDAR CREEK ON ROUTE 166.

BOOK No. 10

A-428	N 24-15-30 E
A-177	AVG 6-13-20 RT
(1)	6-13-20 RT
(2)	17-34-40 RT
N 20-00-10 E	
A-176	AVG 6-13-20 RT
(1)	6-13-20 RT
(2)	17-34-40 RT
N 20-00-10 E	

