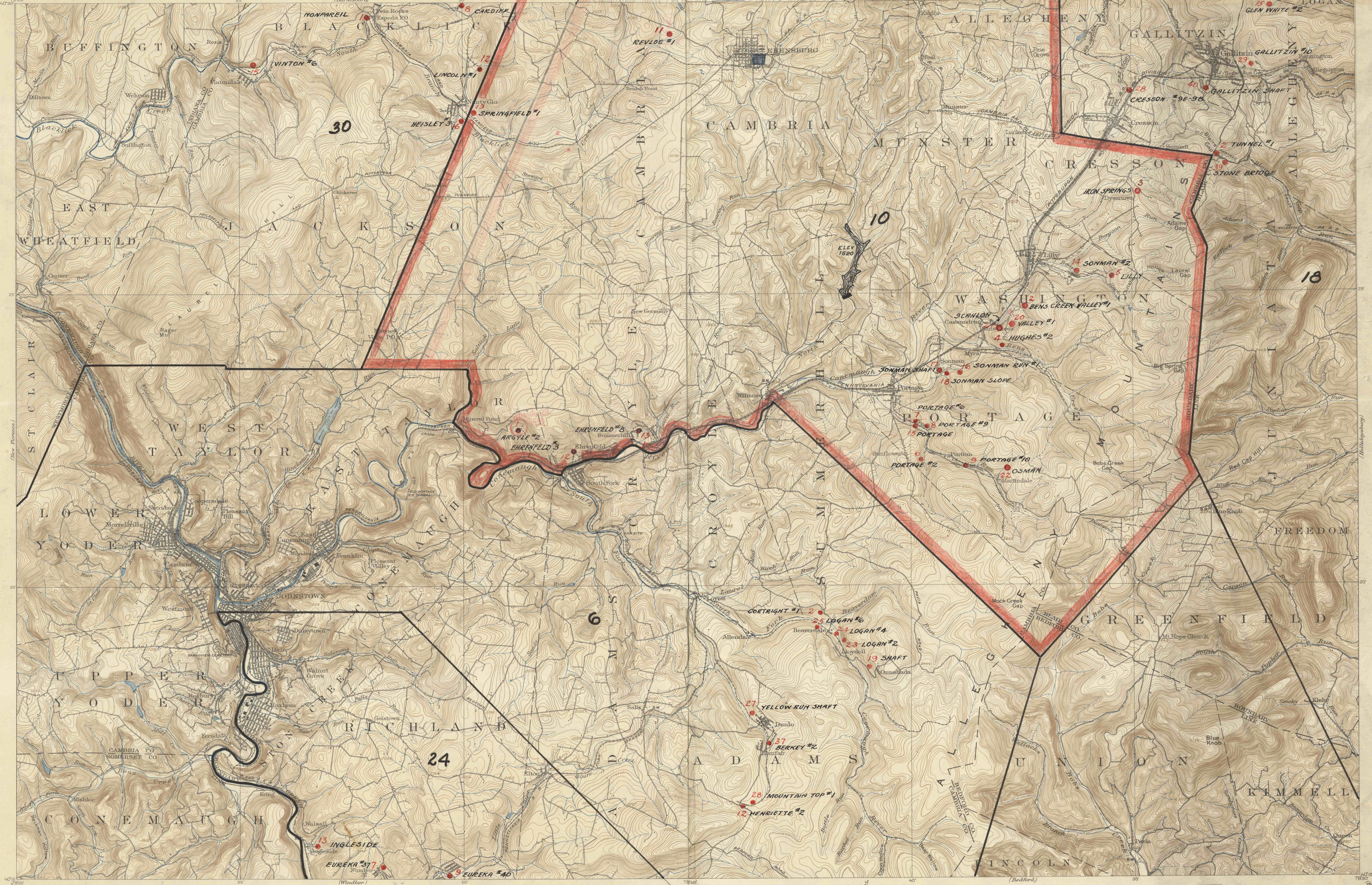


UNITED STATES  
DEPARTMENT OF THE INTERIOR  
GEOLOGICAL SURVEY

STATE OF PENNSYLVANIA  
REPRESENTED BY THE  
DEPARTMENT OF MINERAL AFFAIRS  
TOPOGRAPHIC AND GEOLOGIC SURVEY  
(Barnesboro)



H.M. Wilson, Geographer.  
Frank Sutton and R.D. Cummin in charge of section.  
Topography by R.D. Cummin and A.C. Roberts. Assistant, B.B. Alexander.  
Control by S.S. Gannett and H.B. Paige.  
Surveyed in 1907.

Scale 48000  
Miles  
Kilometers  
Contour interval 20 feet.  
Datum is mean sea level.

Edition of Nov. 1907, reprinted 1938  
H.M. Wilson, Geographer in charge.  
Control by S.S. Gannett and H.B. Paige.  
Topography by Frank Sutton, R.D. Cummin,  
T. Q. Baerlinger and J.S.B. Deingerfeld.  
Surveyed in 1907-1902.

Scale 48000  
Miles  
Kilometers  
Contour interval 20 feet.  
Datum is mean sea level.

Edition of Feb. 1904, reprinted 1938  
Polyconic projection, North American datum

Scale 48000  
Miles  
Kilometers  
Contour interval 20 feet.  
Datum is mean sea level.

JOHNSTOWN, PA.

EBENSBURG, PA.