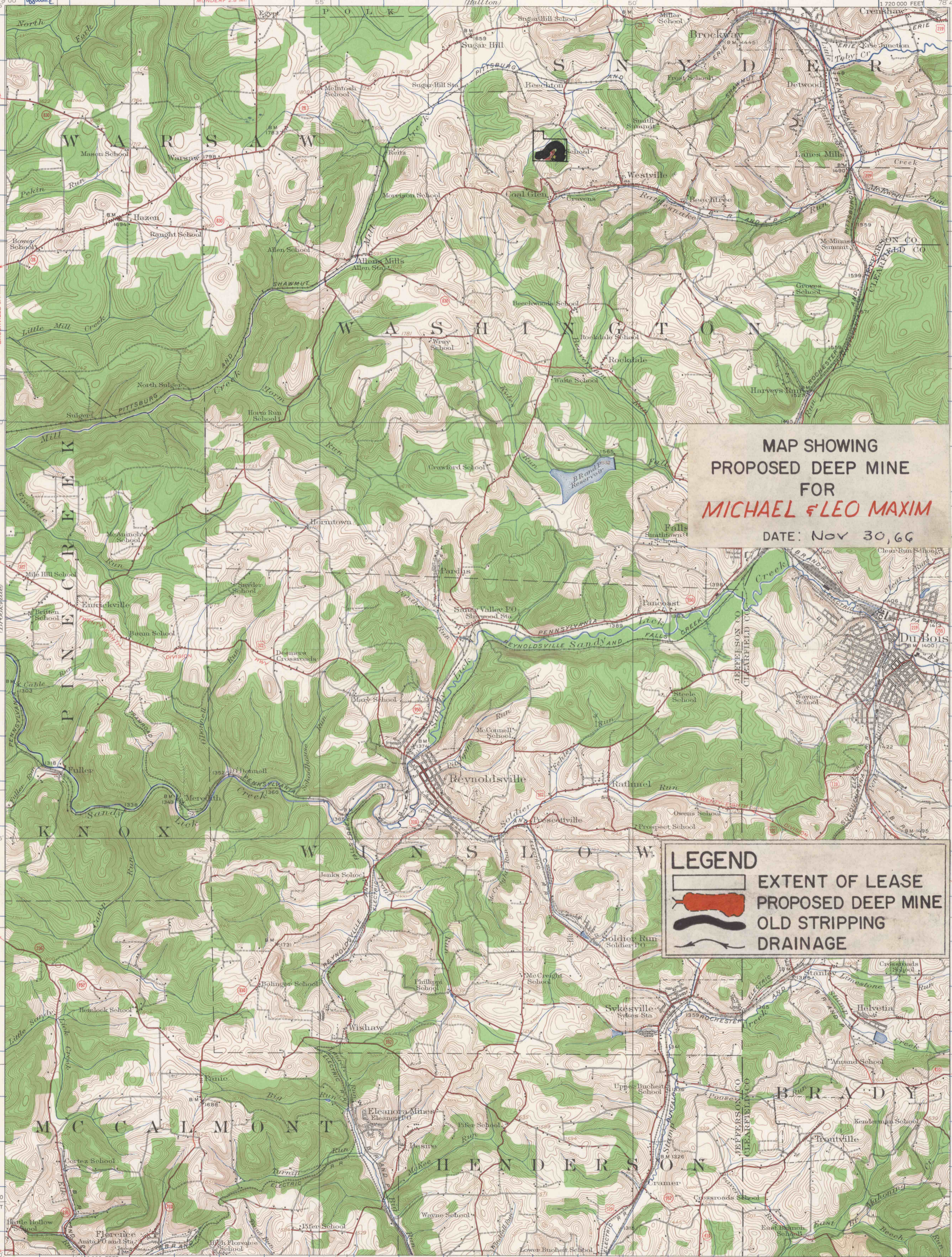


**WASHINGTON TOWNSHIP
JEFFERSON COUNTY
PERMIT NUMBER - 209-1
"D" OR LOWER FREEPORT SEAM**

UNITED STATES
DEPARTMENT OF THE INTERIOR
GEOLOGICAL SURVEY

STATE OF PENNSYLVANIA
REPRESENTED BY THE
DEPARTMENT OF INTERNAL AFFAIRS
TOPOGRAPHIC AND GEOLOGIC SURVEY

PENNSYLVANIA
DU BOIS QUADRANGLE



**MAP SHOWING
PROPOSED DEEP MINE
FOR
MICHAEL & LEO MAXIM
DATE: Nov 30, 66**

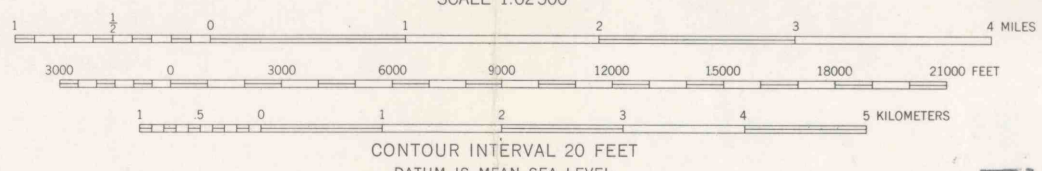
LEGEND

 EXTENT OF LEASE
 PROPOSED DEEP MINE
 OLD STRIPPING
 DRAINAGE

Topography by Albert Pike, J.J. Gayetty, and G.A. Mock.
Control in part by Pennsylvania State Highway Department,
Pennsylvania Railroad and Buffalo, Rochester and Pittsburgh
Railroad.
Surveyed in 1922. PUNXSUTAWNEY & MI.

ROAD CLASSIFICATION
 Heavy-duty ——— Light-duty ———
 Medium-duty ——— Unimproved dirt ———
 U.S. Route State Route

APPROXIMATE MEAN
DECLINATION, 1922



Polyconic projection. 1927 North American datum
10,000-foot grid based on Pennsylvania rectangular
coordinate system, north zone
1000-meter Universal Transverse Mercator grid ticks,
zone 17, shown in blue

DU BOIS, PA.
N 4100-W 7845/15
1922

FIELD COPY

FOR SALE BY U.S. GEOLOGICAL SURVEY, WASHINGTON 25, D. C.
A FOLDER DESCRIBING TOPOGRAPHIC MAPS AND SYMBOLS IS AVAILABLE ON REQUEST