

WASHINGTON TWP.
JEFFERSON COUNTY

NAME OF MINE ; JOSEPH KLEBACHA MINE
NAME OF APPLICANT ; JOSEPH KLEBACHA
DATE ; SEPTEMBER 17, 1966
MINE LOCATED BY ; EVO G. FACCHINE, P.E.
PERMIT NUMBER 142-1 - "D" - OR LOWER FREEPORT SEAM

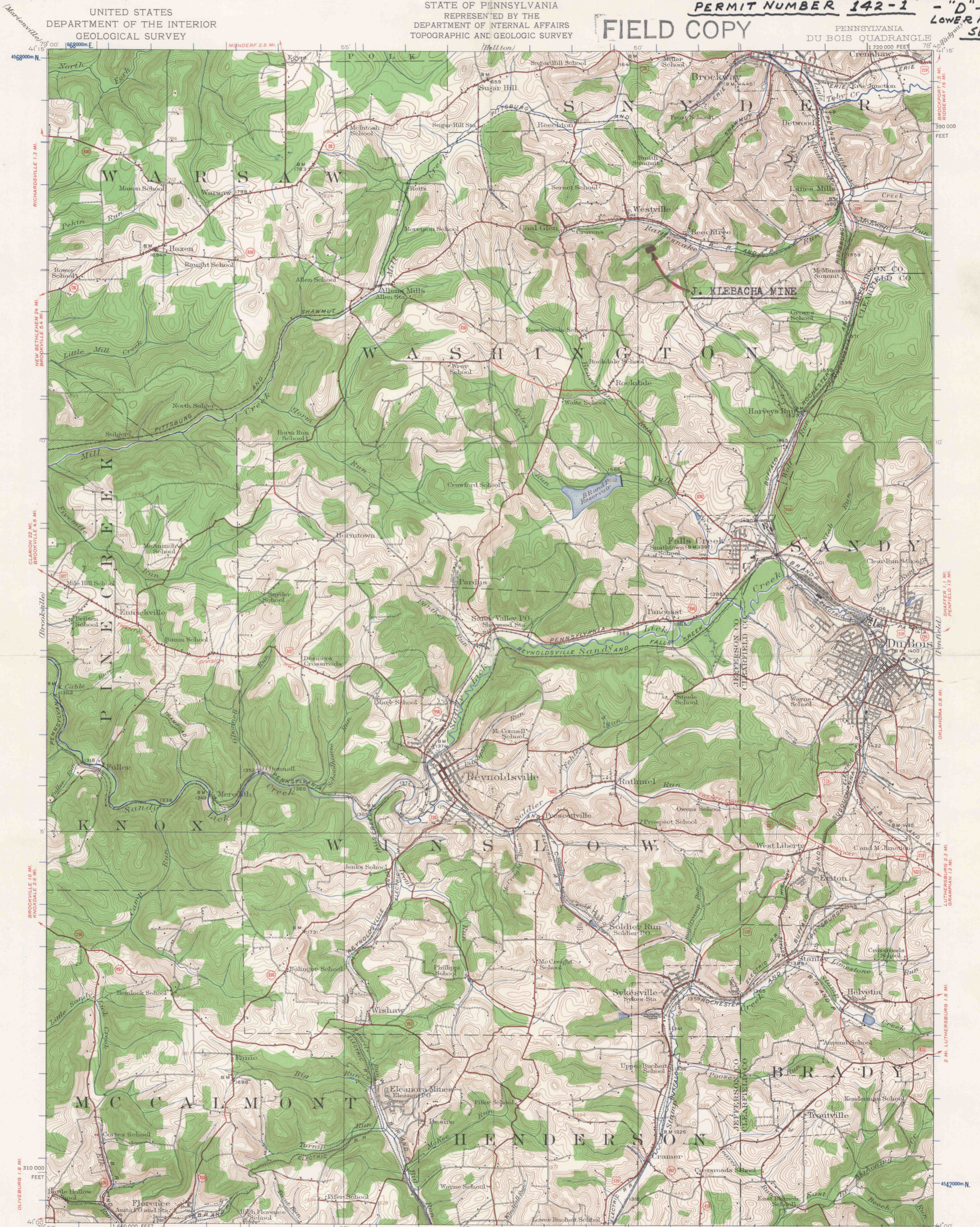
UNITED STATES
DEPARTMENT OF THE INTERIOR
GEOLOGICAL SURVEY

STATE OF PENNSYLVANIA
REPRESENTED BY THE
DEPARTMENT OF INTERNAL AFFAIRS
TOPOGRAPHIC AND GEOLOGIC SURVEY

FIELD COPY

PENNSYLVANIA
DU BOIS QUADRANGLE

1:250,000 FEET



Topography by Albert Pike, J.I. Gayetty, and G.A. Mock.
Control in part by Pennsylvania State Highway Department,
Pennsylvania Railroad and Buffalo, Rochester and Pittsburgh
Railroad.
Surveyed in 1922.

SCALE 1:62,500
3.9 MI. TO U.S. 119
BIG RUN 2.5 MI.
PUNXSUTAWNEY 9.5 MI.
2 MI. TO U.S. 119

INTERIOR GEOLOGICAL SURVEY, WASHINGTON, D. C. 1962
Polyconic projection, 1927 North American datum
10,000-foot grid based on Pennsylvania rectangular
coordinate system, north zone
1000-meter Universal Transverse Mercator grid ticks,
zone 17, shown in blue

ROAD CLASSIFICATION
Heavy-duty ——— Light-duty ———
Medium-duty ——— Unimproved dirt ———
U.S. Route State Route

APPROXIMATE MEAN DECLINATION, 1922
CONTOUR INTERVAL 20 FEET
DATUM IS MEAN SEA LEVEL

DU BOIS, PA.
N 4100-W 7845/15

FOR SALE BY U.S. GEOLOGICAL SURVEY, WASHINGTON 25, D. C.
A FOLDER DESCRIBING TOPOGRAPHIC MAPS AND SYMBOLS IS AVAILABLE ON REQUEST

1922