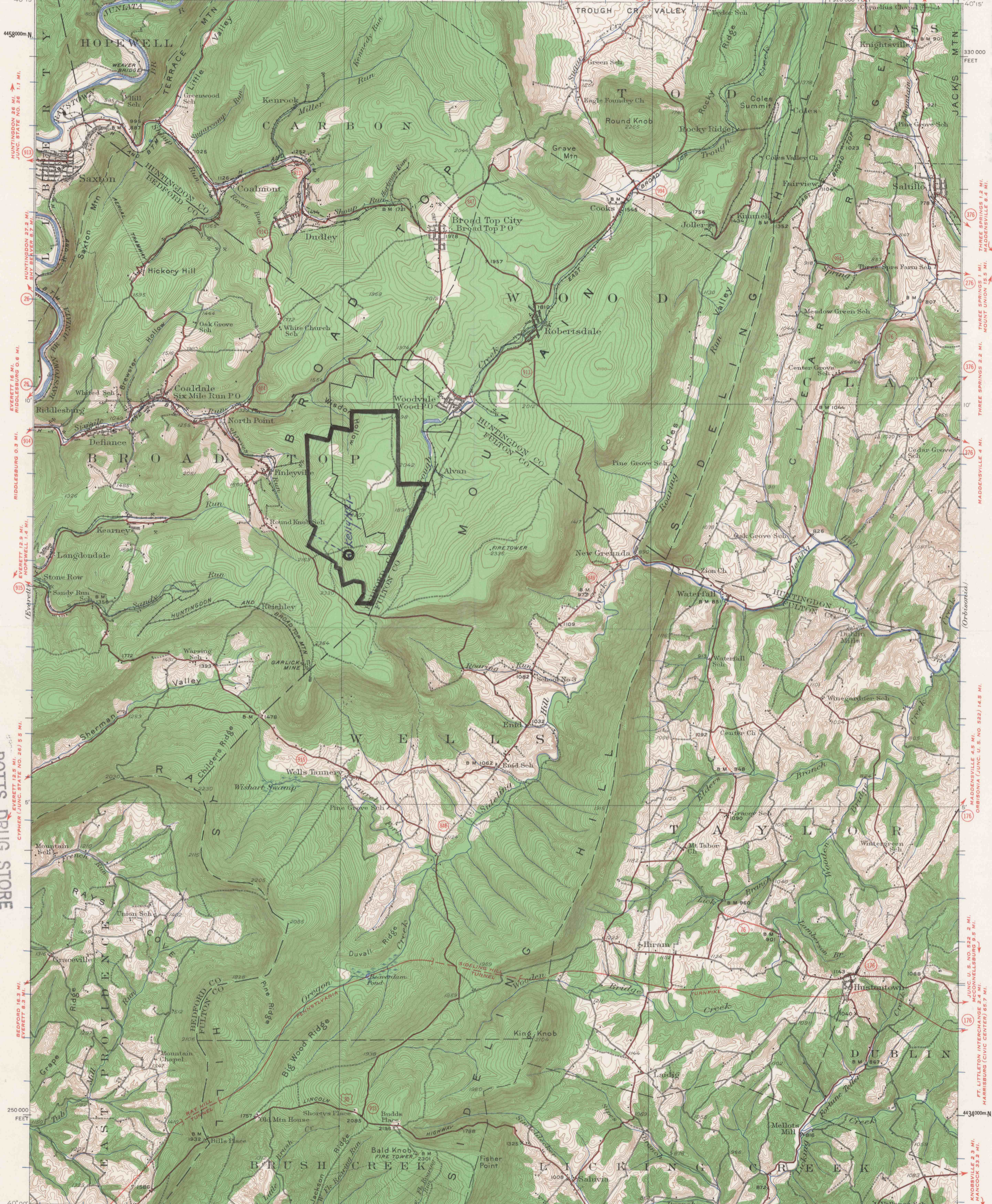


**BROAD TOP TOWNSHIP  
BEDFORD COUNTY  
PERMIT NUMBER - 212-1  
"E" - OR UPPER FREEDPORT SEAM  
(KELLY SEAM)**

UNITED STATES  
DEPARTMENT OF THE INTERIOR  
GEOLOGICAL SURVEY

STATE OF PENNSYLVANIA  
REPRESENTED BY THE  
DEPARTMENT OF INTERNAL AFFAIRS  
TOPOGRAPHIC AND GEOLOGIC SURVEY  
(Huntingdon)

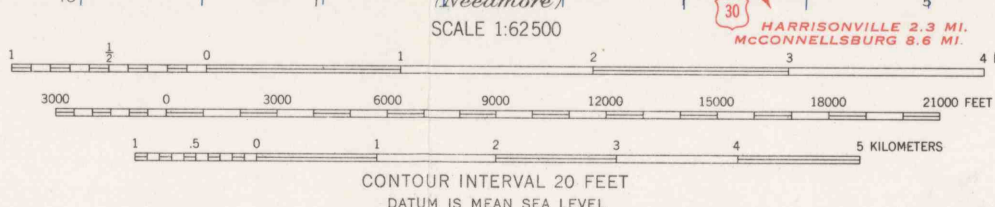
MILL CREEK 17.3 MI.  
CASSVILLE 3.6 MI.  
MAPLETON 11.5 MI.  
BARRETTOWN 5.3 MI.  
PENNSYLVANIA  
BROAD TOP QUADRANGLE  
1:192,000 FEET



**POTTS DRUG STORE**  
1100 N. 3rd ST. HARRISBURG, PA.  
AGENCY FOR U. S.  
GEOLOGICAL SURVEY MAPS

*G.M. & W. Coal Co.  
Broad Top Twp Bedford Co. Penna.  
Dec-7-1966 E. Corrie Engr.*

Topography by C.W. Goodlove, J.K. Bailey,  
R.F. Hamke, and W.A. Fisher.  
Control by U.S. Geological Survey and  
Pennsylvania State Highway Department  
Surveyed in 1929-30



Polyconic projection. 1927 North American datum  
10,000-foot grid based on Pennsylvania (South)  
rectangular coordinate system  
1000-meter Universal Transverse Mercator grid ticks,  
zone 17, shown in blue  
JUNC. U. S. NO. 30 1.6 MI.  
HARRISONVILLE 2.4 MI.  
MC CONNELLSBURG 5.2 MI.

FOR SALE BY U. S. GEOLOGICAL SURVEY, WASHINGTON 25, D. C.  
A FOLDER DESCRIBING TOPOGRAPHIC MAPS AND SYMBOLS IS AVAILABLE ON REQUEST

**ROUTES USUALLY TRAVELED**  
HARD IMPERVIOUS SURFACES  
OTHER SURFACE IMPROVEMENTS  
U. S. ROUTE 1945 STATE ROUTE

**BROAD TOP, PA.**  
N 4000-W 7800/15  
1930