

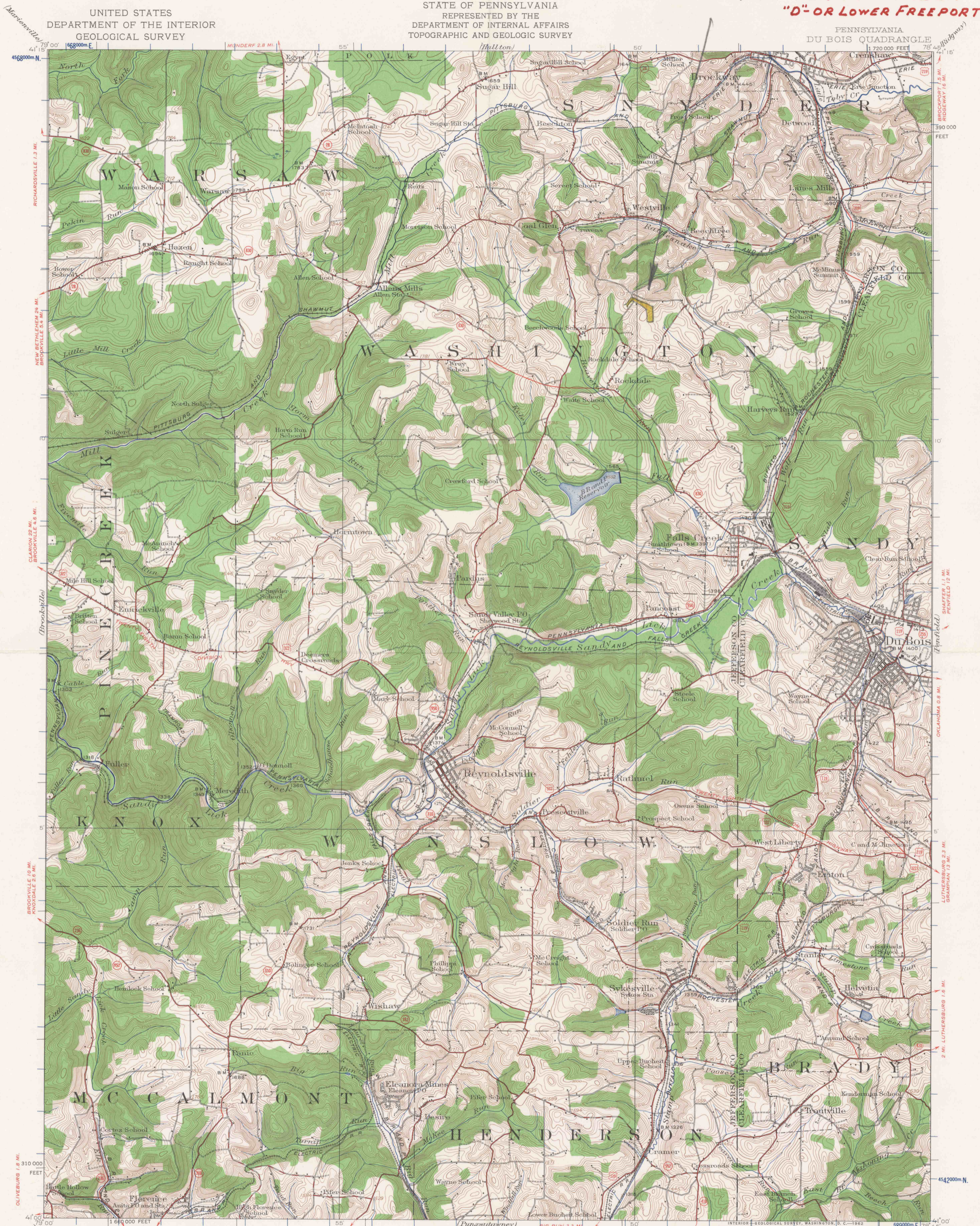
William A. Daugherty
Daugherty Coal Mine
February 27, 1967
Evo G. Facchine, P.E.

**WASHINGTON TOWNSHIP
JEFFERSON COUNTY
PERMIT NUMBER - 296-1
"D"-OR LOWER FREEPORT SEAM**

UNITED STATES
DEPARTMENT OF THE INTERIOR
GEOLOGICAL SURVEY

STATE OF PENNSYLVANIA
REPRESENTED BY THE
DEPARTMENT OF INTERNAL AFFAIRS
TOPOGRAPHIC AND GEOLOGIC SURVEY

PENNSYLVANIA
DU BOIS QUADRANGLE



Topography by Albert Pike, J. Gayetty and G.A. Mock.
Control in part by Pennsylvania State Highway Department,
Pennsylvania Railroad and Buffalo, Rochester and Pittsburgh
Railroad.
Surveyed in 1922.

ROAD CLASSIFICATION
Heavy-duty ——— Light-duty ———
Medium-duty ——— Unimproved dirt - - - - -
U. S. Route State Route



Polyconic projection, 1927 North American datum
10,000-foot grid based on Pennsylvania rectangular
coordinate system, north zone
1000-meter Universal Transverse Mercator grid ticks,
zone 17, shown in blue

FOR SALE BY U. S. GEOLOGICAL SURVEY, WASHINGTON 25, D. C.
A FOLDER DESCRIBING TOPOGRAPHIC MAPS AND SYMBOLS IS AVAILABLE ON REQUEST

DU BOIS, PA.
N 4100-W 7845/15

1922