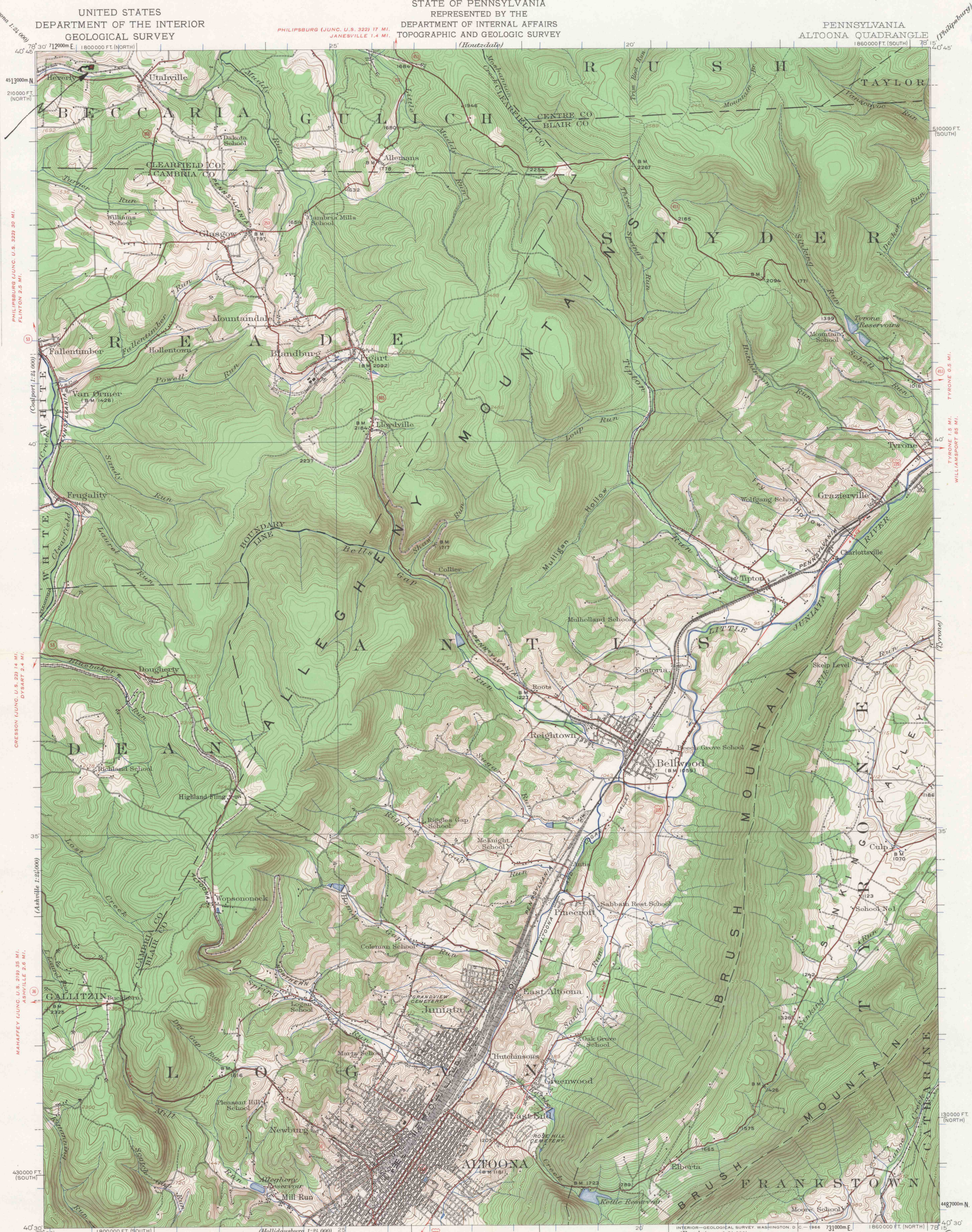


*Cammos Coal Co.
Houtzdale, Pa.
Cammos #1 Mine
12-12-66 Allen & Butler*

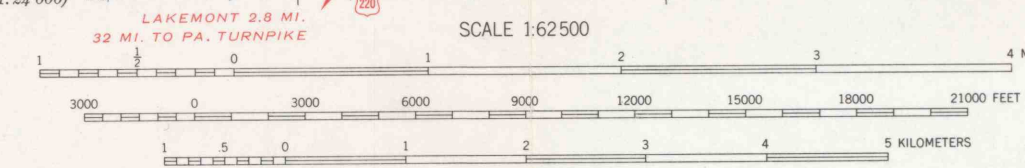
**BECCARIA TOWNSHIP
CLEARFIELD COUNTY
PERMIT NUMBER -128-1
"D" OR LOWER FREEPORT SEAM**



(From 1:24,000)
PHILIPSBURG (JUNC. U.S. 322) 17 MI.
FLINTON 2.5 MI.
GRESSION (JUNC. U.S. 22) 14 MI.
DYSART 2.4 MI.
ASHVILLE 2.6 MI.
MASHAFFEY (JUNC. U.S. 219) 3.5 MI.
HOLLIDAYSBURG 1:24,000
LAKEMONT 2.8 MI.
3.2 MI. TO PA. TURNPIKE
HOLLIDAYSBURG 1:24,000

(Houtzdale)
20'
513000m N
210000 FT (NORTH)
510000 FT (SOUTH)
TYRONE 0.5 MI.
TYRONE 1.8 MI.
WILLIAMSPORT 8.5 MI.
4487000m N

C.H. Birdseye, Chief Topographic Engineer.
Frank Sutton, Topographic Engineer in charge.
Topography by J.I. Gayetty, W.S. Beames, and F.M. Schilling.
Control by E.L. McNair, A.H. Thompson, J.L. Lenovitz,
Pennsylvania State Highway Department, and
Pennsylvania Railroad.
Surveyed in 1920.



SCALE 1:62,500
CONTOUR INTERVAL 20 FEET
DATUM IS MEAN SEA LEVEL

ROAD CLASSIFICATION
Heavy-duty ——— Light-duty ———
Medium-duty ——— Unimproved dirt - - - - -
U.S. Route State

ALTOONA, PA.
N 4030-W 7815/15
1920

FOR SALE BY U.S. GEOLOGICAL SURVEY, WASHINGTON, D. C. 20242
A FOLDER DESCRIBING TOPOGRAPHIC MAPS AND SYMBOLS IS AVAILABLE ON REQUEST

PHILIPSBURG (JUNC. U.S. 322) 17 MI.
FLINTON 2.5 MI.
GRESSION (JUNC. U.S. 22) 14 MI.
DYSART 2.4 MI.
ASHVILLE 2.6 MI.
MASHAFFEY (JUNC. U.S. 219) 3.5 MI.
HOLLIDAYSBURG 1:24,000
LAKEMONT 2.8 MI.
3.2 MI. TO PA. TURNPIKE
HOLLIDAYSBURG 1:24,000