

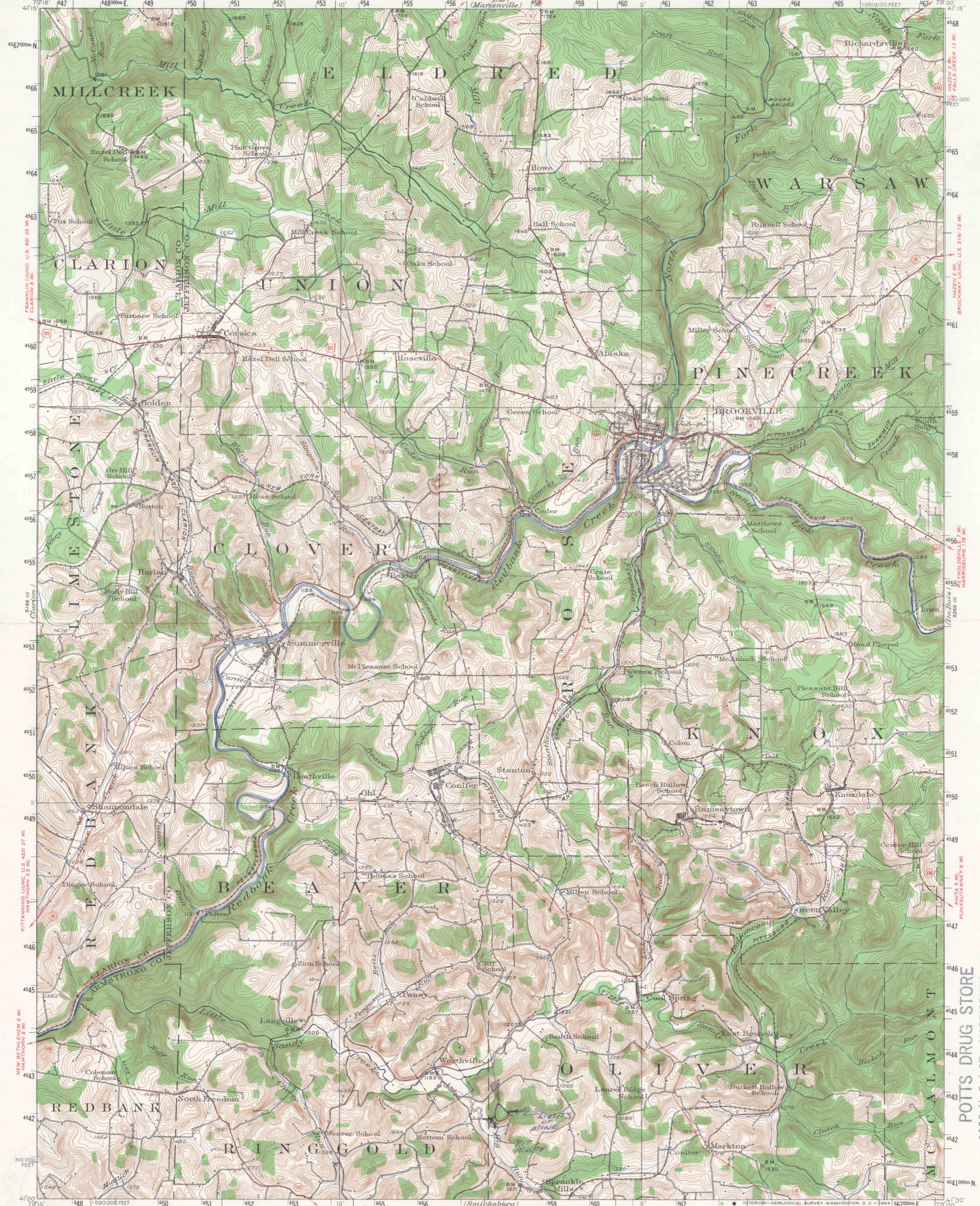
BECKMAN COAL CO.  
 BECKMAN No. 12 MINE  
 submitted by: J. M. DOUGLAS, R. S.  
 2-20-67

**OLIVER TOWNSHIP  
 JEFFERSON COUNTY  
 PERMIT NUMBER - 275-1  
 C - PRIME - OR UPPER KITTANNING SEAM**

UNITED STATES  
 DEPARTMENT OF THE INTERIOR  
 GEOLOGICAL SURVEY

STATE OF PENNSYLVANIA  
 REPRESENTED BY THE  
 DEPARTMENT OF INTERNAL AFFAIRS  
 TOPOGRAPHIC AND GEOLOGIC SURVEY

PENNSYLVANIA  
 BROOKVILLE QUADRANGLE



Topography by A.T. Fowler and F.H. Sargent  
 Control in part by Pennsylvania State Highway Department  
 and Pennsylvania Railroad  
 Surveyed in 1922 and 1924

**ROAD CLASSIFICATION**  
 Heavy-duty ——— Light-duty ———  
 Medium-duty ——— Unimproved dirt ———  
 U.S. Route      State Route

UTM GRID AND 1904 MAGNETIC NORTH  
 DECLINATION AT CENTER OF SHEET

SCALE 1:62500  
 0 3000 6000 9000 12000 15000 18000 21000 FEET  
 0 1 2 3 4 5 KILOMETERS  
 CONTOUR INTERVAL 20 FEET  
 DATUM IS MEAN SEA LEVEL

*J. M. Douglas*

Polyconic projection, 1927 North American datum  
 10,000 foot grid based on Pennsylvania (North)  
 geographic coordinate system  
 1000-meter Universal Transverse Mercator grid ticks,  
 zone 17, shown in blue

PUNXSUTAWNEY 6 MI.  
 ALTOONA 61 MI.  
 BROOKVILLE, PA.  
 N4100-W7900/15

POTTS DRUG STORE  
 1100 N. 3rd ST. HARRISBURG, PA.  
 AGENCY FOR U. S.  
 GEOLOGICAL SURVEY MAPS

FOR SALE BY U. S. GEOLOGICAL SURVEY, WASHINGTON 25, D. C.  
 A FOLDER DESCRIBING TOPOGRAPHIC MAPS AND SYMBOLS IS AVAILABLE ON REQUEST

1924  
 AMS 5166 II - SERIES V731