

**SOMERSET & BROTHERS VALLEY TOWNSHIPS,  
SOMERSET COUNTY  
PERMIT NUMBER - 339-1  
"E" OR UPPER FREEPORT SEAM**

MEYERSDALE QUADRANGLE  
PENNSYLVANIA—SOMERSET CO.  
15 MINUTE SERIES (TOPOGRAPHIC)

UNITED STATES  
DEPARTMENT OF THE INTERIOR  
GEOLOGICAL SURVEY

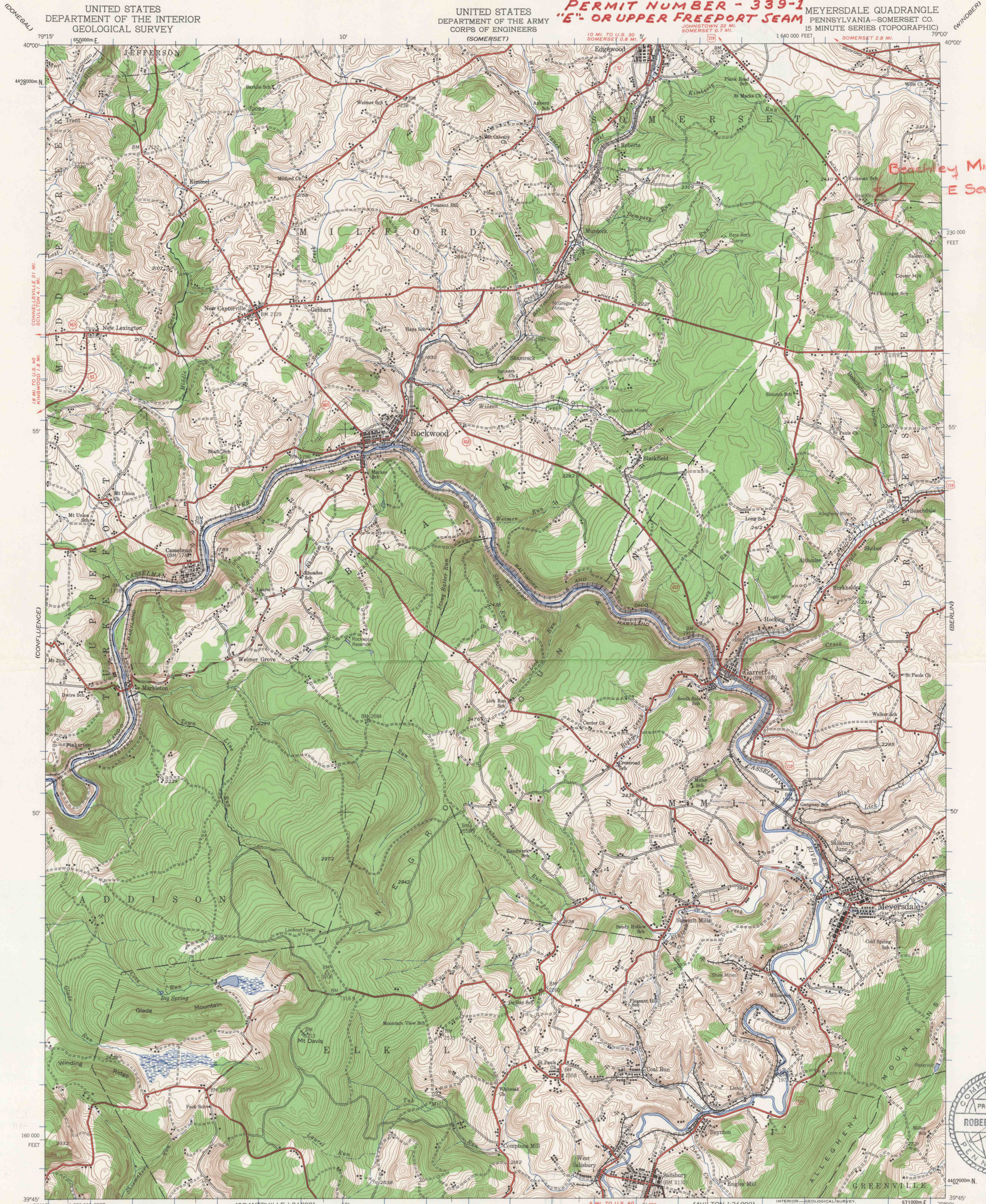
UNITED STATES  
DEPARTMENT OF THE ARMY  
CORPS OF ENGINEERS  
(SOMERSET)

10 MI. TO U.S. 30  
SOMERSET 0.8 MI.

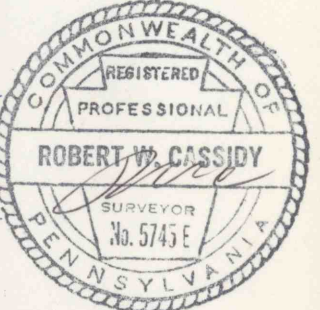
JOHNSTOWN 35 MI.  
SOMERSET 1.7 MI.

1:640,000 FEET

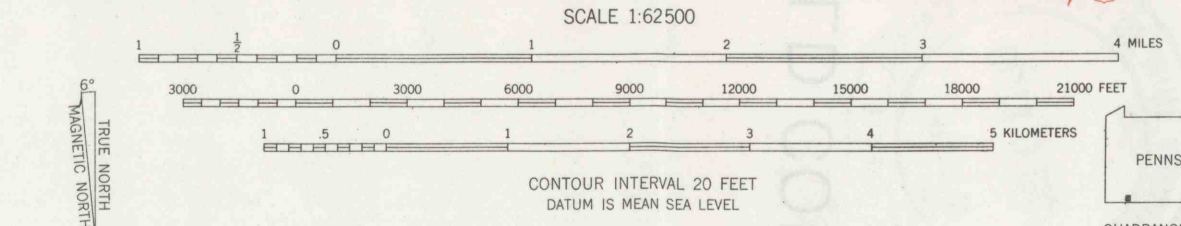
SOMERSET 2.8 MI.



*Beachley Mine  
E Seam*



Mapped by the Army Map Service and the Geological Survey  
Published for civil use by the Geological Survey  
Control by USGS  
Topography by plane-table surveys by USGS, 1919  
Planimetry revised by AMS from aerial photographs taken 1939  
Polyconic projection. 1927 North American datum  
10,000-foot grid based on Pennsylvania coordinate system,  
south zone.  
1000-meter Universal Transverse Mercator grid ticks,  
zone 17, shown in blue



ROAD CLASSIFICATION

Heavy-duty	Light-duty
Medium-duty	Unimproved dirt
U. S. Route	State Route

MEYERSDALE, PA.  
APPL. DALTON J. BEACHLEY  
DATE: 10-1-67  
LOCATED BY Robert W. Cassidy P.S. 5745 E

FOR SALE BY U.S. GEOLOGICAL SURVEY, WASHINGTON 25, D.C.  
A FOLDER DESCRIBING TOPOGRAPHIC MAPS AND SYMBOLS IS AVAILABLE ON REQUEST