

01-2699

UNITED STATES
DEPARTMENT OF THE INTERIOR
GEOLOGICAL SURVEY

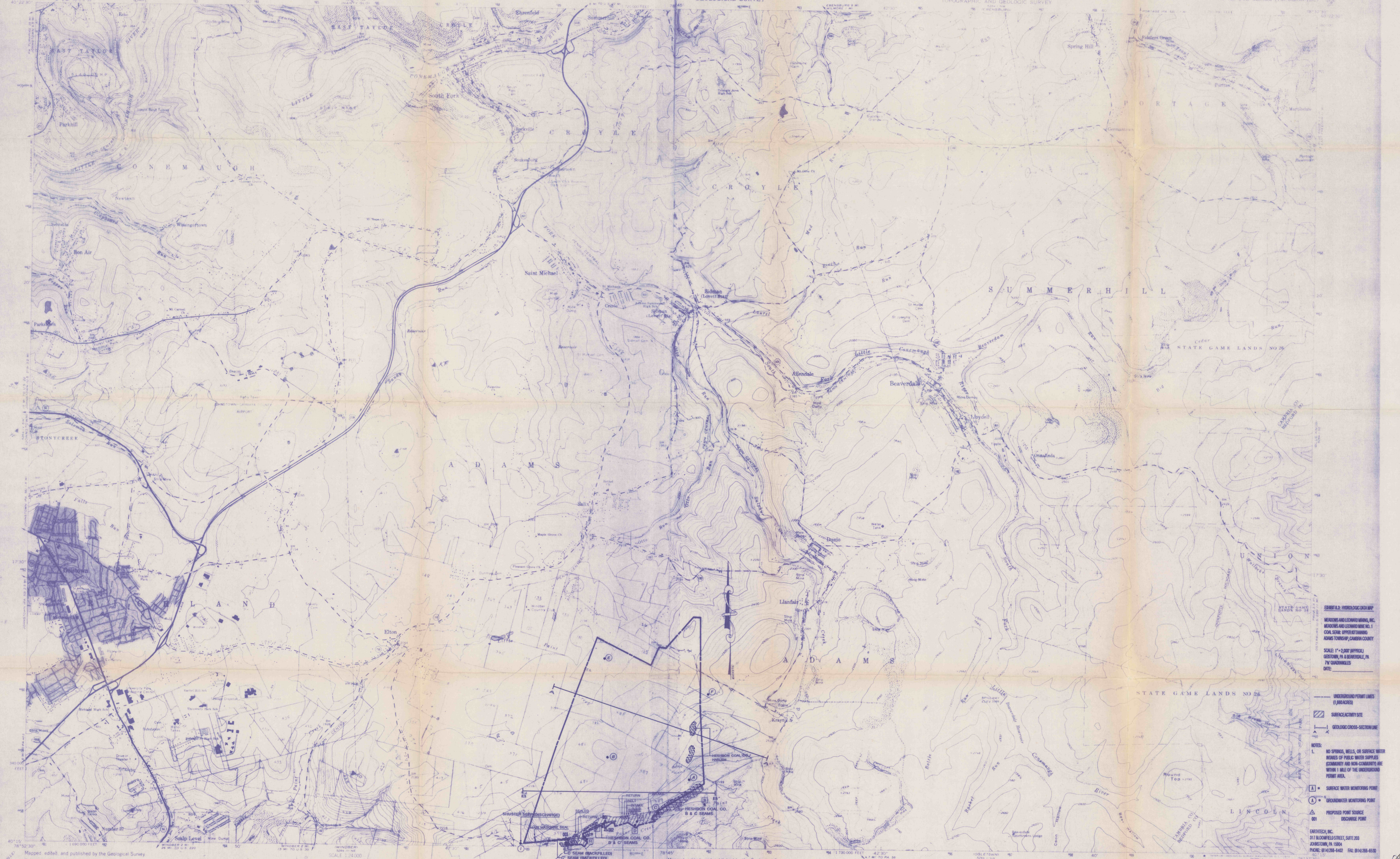
COMMONWEALTH OF PENNSYLVANIA
DEPARTMENT OF ENVIRONMENTAL RESOURCES
TOPOGRAPHIC AND GEOLOGIC SURVEY

GEISTOWN QUADRANGLE
PENNSYLVANIA-CAMBRIA CO.
7.5 MINUTE SERIES (TOPOGRAPHIC)

UNITED STATES
DEPARTMENT OF THE INTERIOR
GEOLOGICAL SURVEY

COMMONWEALTH OF PENNSYLVANIA
DEPARTMENT OF ENVIRONMENTAL RESOURCES
TOPOGRAPHIC AND GEOLOGIC SURVEY

BEAVERDALE QUADRANGLE
PENNSYLVANIA
7.5 MINUTE SERIES (TOPOGRAPHIC)



Maped, edited, and published by the Geological Survey
Control by USGS, USCGS, and USACE
Topography by photogrammetric methods from aerial
photographs taken 1962. Field checked 1964.
Polyconic projection, 1827 North American datum,
10,000-foot grid based on Pennsylvania coordinate system, south zone,
1000-meter Universal Transverse Mercator grid ticks, zone 17,
shown in blue.
Fine red dashed lines indicate selected fence and field lines where
generally visible on aerial photographs. This information is unchecked.
Red line indicates area in which only landmark buildings are shown.

SCALE 1:24,000
CONTOUR INTERVAL 20 FEET
DATUM IS MEAN SEA LEVEL

Maped, edited, and published by the Geological Survey
Control by USGS and USCGS
Topography by photogrammetric methods from aerial
photographs taken 1962. Field checked 1963.
Polyconic projection, 1927 North American datum,
10,000-foot grid based on Pennsylvania coordinate system, south zone,
1000-meter Universal Transverse Mercator grid ticks,
zone 17, shown in blue.
Fine red dashed lines indicate selected fence and field lines where
generally visible on aerial photographs. This information is unchecked.

SCALE 1:24,000
CONTOUR INTERVAL 20 FEET
DATUM IS MEAN SEA LEVEL

Maped, edited, and published by the Geological Survey
Control by USGS and USCGS
Topography by photogrammetric methods from aerial
photographs taken 1962. Field checked 1963.
Polyconic projection, 1927 North American datum,
10,000-foot grid based on Pennsylvania coordinate system, south zone,
1000-meter Universal Transverse Mercator grid ticks,
zone 17, shown in blue.
Fine red dashed lines indicate selected fence and field lines where
generally visible on aerial photographs. This information is unchecked.

SCALE 1:24,000
CONTOUR INTERVAL 20 FEET
DATUM IS MEAN SEA LEVEL

EXHIBIT B-2, HYDROLOGIC DATA MAP
MEADOWS AND LEONARDI, INC.
LOCAL SEAM OPERATING UNDER
ROMEO TOWNSHIP, CAMBRIA COUNTY
SCALE: 1"=2,000' (APPROX.)
GEISTOWN, PA & BEAVERDALE, PA
7.5 QUADRANGLES
DATE:

- UNDERGROUND PERMIT LIMITS (1,000 ACRES)
- SURFACE ACTIVITY SITE
- GEOLOGIC CROSS-SECTION LINE
- NO SPRINGS, WELLS, OR SURFACE WATER WORKS OF PUBLIC WATER SUPPLIES (COMMUNITY AND NON-COMMUNITY ARE WITHIN 1 MILE OF THE UNDERGROUND PERMIT AREA)
- SURFACE WATER MONITORING POINT
- GROUNDEWATER MONITORING POINT
- PROPOSED POINT SOURCE
- DISCHARGE POINT

ENTRETECH, INC.
817 BLOOMFIELD STREET, SUITE 203
JOHNSTOWN, PA 15004
PHONE: 814/268-6402 FAX: 814/268-6500

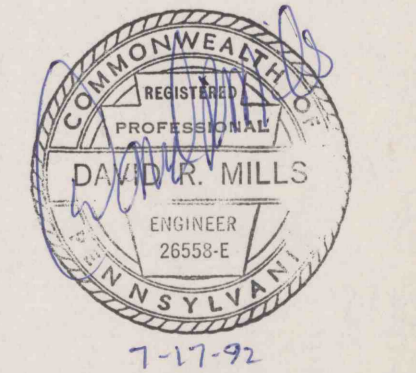
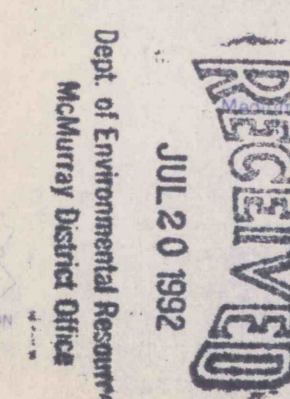
ROAD CLASSIFICATION
Light Duty
Unimproved dirt
State Route

BEAVERDALE, PA.
1963
PHOTOREVISED 1972
AMS 5284 1/8" SERIES 517.6

GEISTOWN, PA.
194015-197845/715
1968
PHOTOREVISED 1972
AMS 5284 1/8" SERIES 518.1

Revisions shown in purple compiled in cooperation with
State of Pennsylvania agencies from aerial photographs
taken 1972. This information not field checked.

FOR SALE BY U. S. GEOLOGICAL SURVEY, WASHINGTON, D. C. 20242
A FOLDER DESCRIBING TOPOGRAPHIC MAPS AND SYMBOLS IS AVAILABLE ON REQUEST



01-2699