

01-2699

UNITED STATES  
DEPARTMENT OF THE INTERIOR  
GEOLOGICAL SURVEY

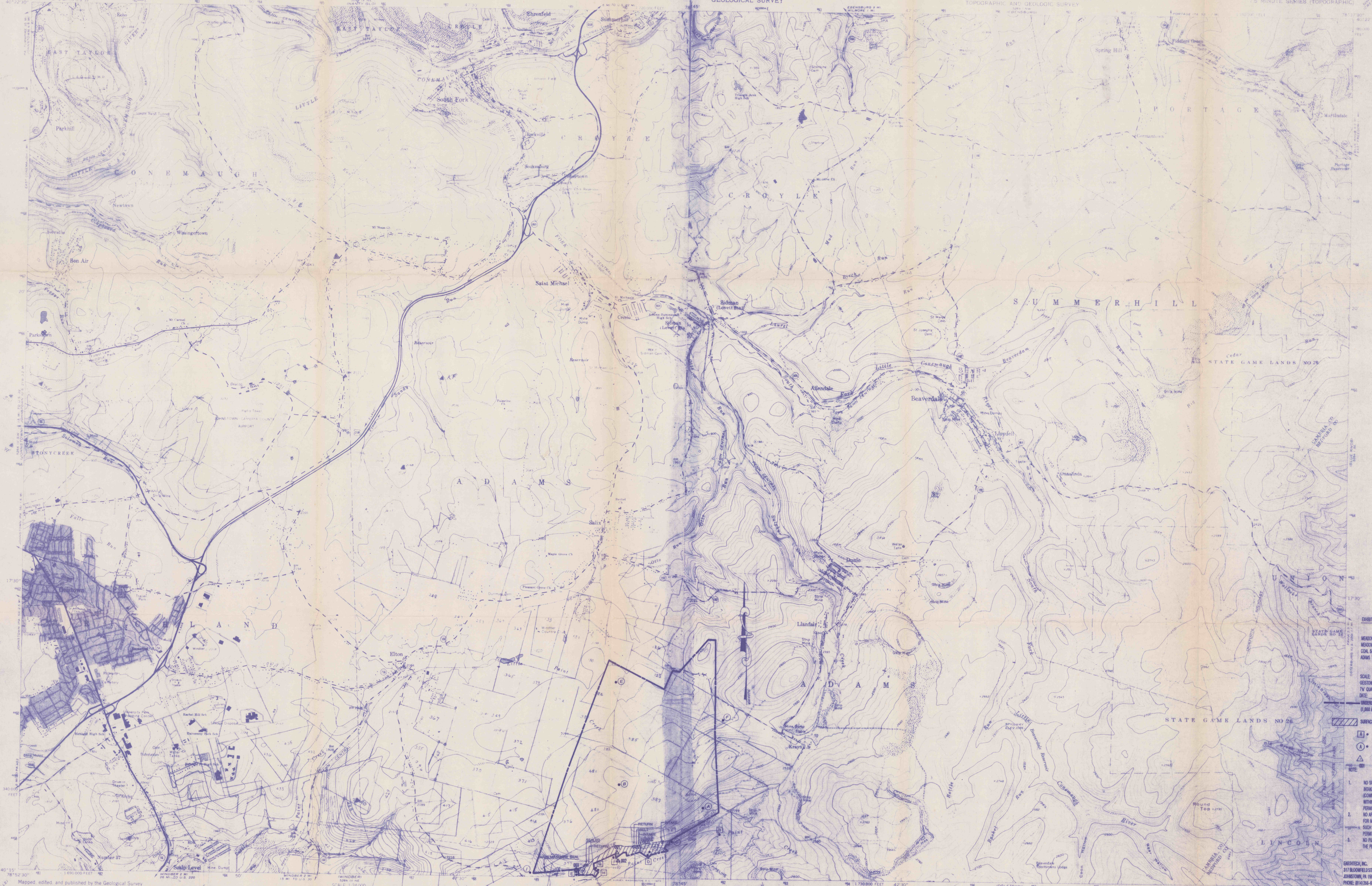
COMMONWEALTH OF PENNSYLVANIA  
DEPARTMENT OF ENVIRONMENTAL RESOURCES  
TOPOGRAPHIC AND GEOLOGIC SURVEY

GEISTOWN QUADRANGLE  
PENNSYLVANIA-CAMBRIA CO.  
7.5 MINUTE SERIES (TOPOGRAPHIC)

UNITED STATES  
DEPARTMENT OF THE INTERIOR  
GEOLOGICAL SURVEY

COMMONWEALTH OF PENNSYLVANIA  
DEPARTMENT OF ENVIRONMENTAL RESOURCES  
TOPOGRAPHIC AND GEOLOGIC SURVEY

BEAVERDALE QUADRANGLE  
PENNSYLVANIA  
7.5 MINUTE SERIES (TOPOGRAPHIC)



Mapped, edited, and published by the Geological Survey  
Control by USGS, USGS&S, and USIE  
Topography by photogrammetric methods from aerial  
photographs taken 1962. Field checked 1964  
Polyconic projection, 1927 North American datum  
100,000-foot grid based on Pennsylvania coordinate system, south zone  
3,000-meter Universal Transverse Mercator grid, zone 17,  
sheet 17  
Fine red dashed lines indicate selected fence and field lines where  
generally visible on aerial photographs. This information is unclassified.  
Red tint indicates area in which only landmark buildings are shown

SCALE 1:24,000  
CONTOUR INTERVAL 20 FEET  
DATUM IS MEAN SEA LEVEL

Mapped, edited, and published by the Geological Survey  
Control by USGS and USGS&S  
Topography by photogrammetric methods from aerial  
photographs taken 1962. Field checked 1963  
Polyconic projection, 1927 North American datum  
100,000-foot grid based on Pennsylvania coordinate system, south zone  
3,000-meter Universal Transverse Mercator grid, zone 17,  
sheet 17  
Fine red dashed lines indicate selected fence and field lines where  
generally visible on aerial photographs. This information is unclassified.  
Revisions shown in purple compiled in cooperation with  
State of Pennsylvania agencies from aerial photographs  
taken 1972. This information not field checked

SCALE 1:24,000  
CONTOUR INTERVAL 20 FEET  
DATUM IS MEAN SEA LEVEL

Mapped, edited, and published by the Geological Survey  
Control by USGS and USGS&S  
Topography by photogrammetric methods from aerial  
photographs taken 1962. Field checked 1963  
Polyconic projection, 1927 North American datum  
100,000-foot grid based on Pennsylvania coordinate system, south zone  
3,000-meter Universal Transverse Mercator grid, zone 17,  
sheet 17  
Fine red dashed lines indicate selected fence and field lines where  
generally visible on aerial photographs. This information is unclassified.  
Revisions shown in purple compiled in cooperation with  
State of Pennsylvania agencies from aerial photographs  
taken 1972. This information not field checked

EXHIBIT 6.2. LOCATION MAP

MEADOWS AND LEONARD MINING, INC.  
MEADOWS AND LEONARD MINE NO. 1  
COAL SEAM - UPPER KITTANNING  
ADAMS TOWNSHIP, CAMBRIA COUNTY, PA

SCALE: 1" = 2,000' (APPROX.)  
SECTION 18 AND BEAVERDALE,  
T4 QUADRANGLES

RECEIVED  
JUL 20 1992

Dept. of Environmental Resources  
McMurry District Office

UNDERGROUND PERMIT LIMITS  
(1,000' INCHES)

SURFACE ACTIVITY SITE

SURFACE WATER MONITORING POINT

GEOCHIMICAL MONITORING POINT

PROPOSED POINT SOURCE

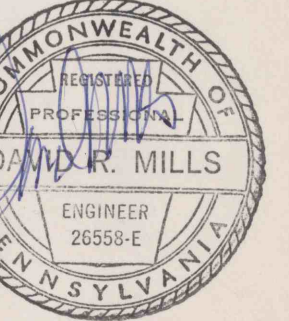
UNDESIGNATED POINT

NOTE:

1. NO SPRINGS, WELLS, OR SURFACE WATER  
INCREASES OF PUBLIC WATER SUPPLY  
COMMUNITY AND NON-COMMUNITY ARE  
WITHIN 1 MILE OF THE UNDERGROUND  
PERMIT AREA.

2. NO AREAS ARE DESIGNATED UNSUITABLE  
FOR MINING OR UNDER PERMIT FOR  
SUCH DESIGNATION EAST WITHIN THE  
PERMIT AREA.

3. NO PUBLIC PARKS ARE LOCATED WITHIN  
THE PERMIT AREA.



DAVID R. MILLS  
ENGINEER  
20559-E  
7-11-92

BEAVERDALE, PA

14035-W7837.5/7.5  
1983  
PHOTOREVISED 1992  
AMS 5364 1 V SE - 05/0163 1991

01-2699