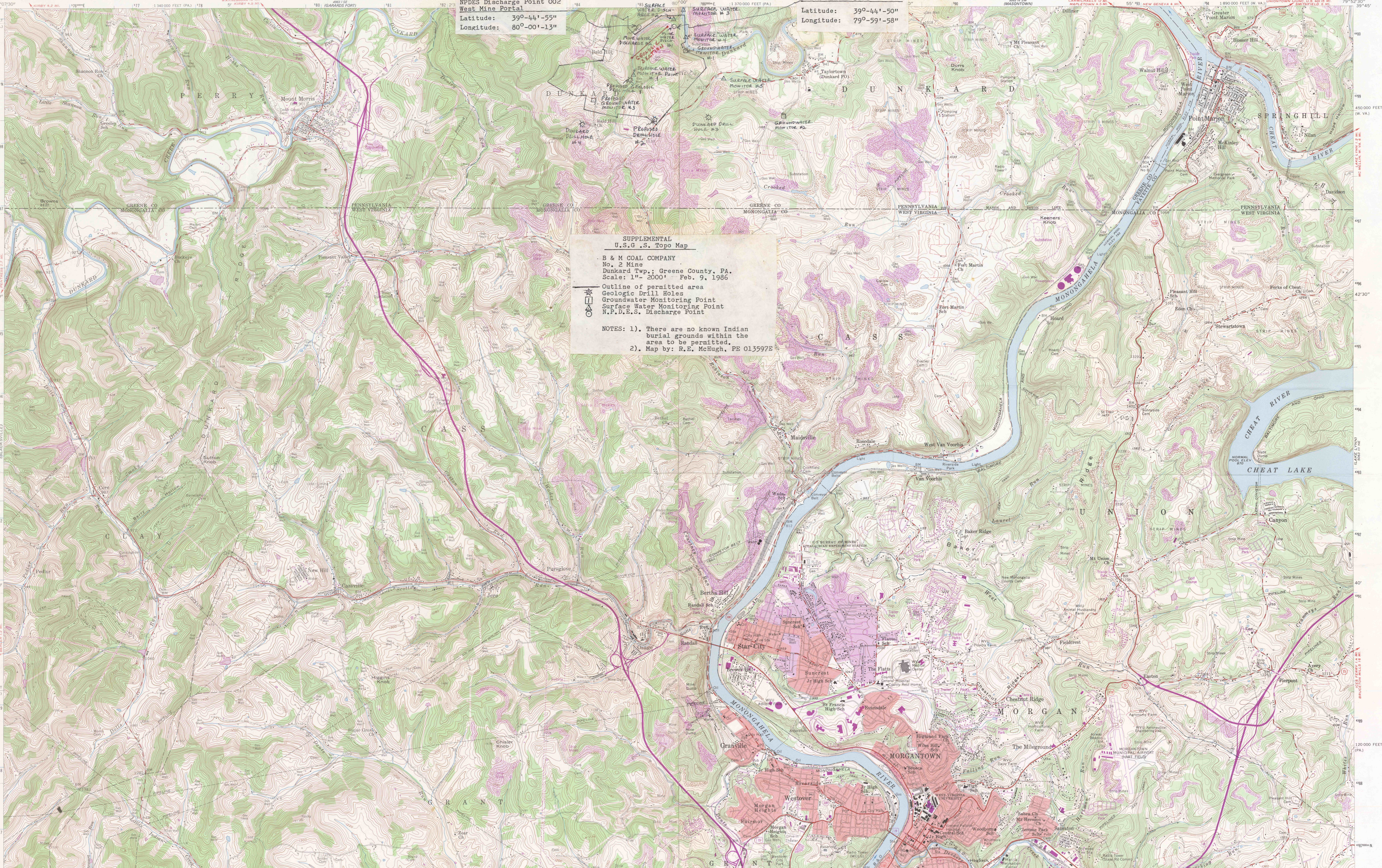


NPDES Discharge Point 002 South Mine Portal  
Latitude: 39°-44'-55"  
Longitude: 80°-00'-13"

NPDES Discharge Point 001 South Mine Portal  
Latitude: 39°-44'-50"  
Longitude: 79°-59'-58"

SUPPLEMENTAL U.S.G. S. Topo Map  
B & M COAL COMPANY  
No. 2 Mine  
Dunkard Twp., Greene County, PA.  
Scale: 1" = 2000' Feb. 9, 1986  
Outline of permitted area  
Geologic Drill Holes  
Groundwater Monitoring Point  
Surface Water Monitoring Point  
N.P.D.E.S. Discharge Point

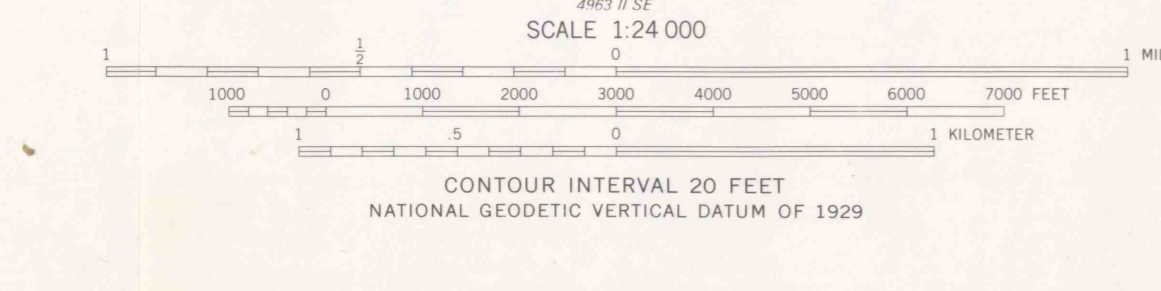
NOTES: 1). There are no known Indian burial grounds within the area to be permitted.  
2). Map by: R.E. McHugh, PE 013597E



Mapped, edited, and published by the Geological Survey

Control by USGS and USCGS  
Topography from aerial photographs by photogrammetric methods  
Aerial photographs taken 1956. Field check 1989  
Polyconic projection, 1927 North American datum  
10,000-foot grids based on West Virginia coordinate system, north zone, and Pennsylvania coordinate system, south zone  
1000-meter Universal Transverse Mercator grid ticks, zone 17, shown in blue

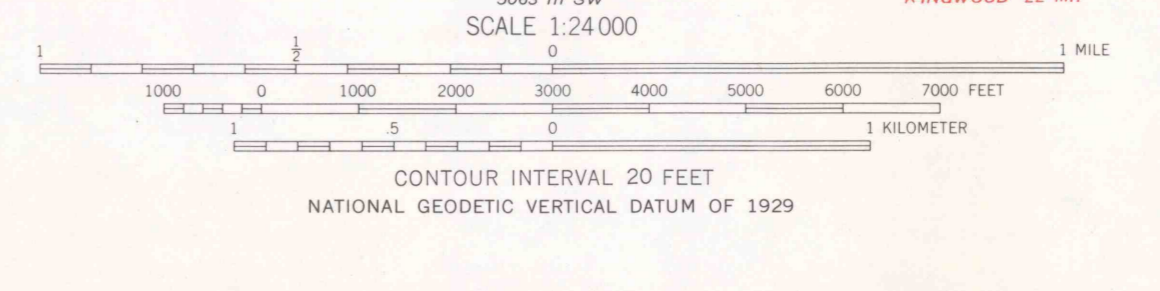
Fine red dashed lines indicate selected fence and field lines where generally visible on aerial photographs. This information is un-checked  
Unlabeled wells are oil wells



ROAD CLASSIFICATION  
Heavy-duty — Light-duty  
Medium-duty — Unimproved dirt  
U.S. Route — State Route  
Interstate Route  
OSAGE, W. VA.—PA.  
NE 1/4 BLACKSVILLE 18' QUADRANGLE  
N 3937.5 — W 9200.7/17.5  
1968  
PHOTOREVISED 1976  
AMS 4963 II NE—SERIES V854

Mapped, edited, and published by the Geological Survey  
Control by USGS, USCGS, and USCE  
Topography from aerial photographs by Ketch plotter  
Aerial photographs taken 1956. Field check 1987  
Polyconic projection, 1927 North American datum  
10,000-foot grids based on West Virginia coordinate system, north zone, and Pennsylvania coordinate system, south zone  
1000-meter Universal Transverse Mercator grid ticks, zone 17, shown in blue

Fine red dashed lines indicate selected fence and field lines visible on aerial photographs. This information is un-checked  
Contours in strip mine areas from 1955 photography  
Red tint indicates areas in which only landmark buildings are shown  
Unchecked elevations are shown in brown  
Purple tint indicates extension of urban areas



ROAD CLASSIFICATION  
Heavy-duty — Light-duty  
Medium-duty — Unimproved dirt  
U.S. Route — State Route  
Interstate Route  
MORGANTOWN NORTH, W. VA.—PA.  
NW 1/4 MORGANTOWN 18' QUADRANGLE  
N 3937.5 — W 9200.7/17.5  
1957  
PHOTOREVISED 1976  
AMS 5083 III NW—SERIES V854

Mapped, edited, and published by the Geological Survey  
Control by USGS and USCGS  
Topography from aerial photographs by photogrammetric methods  
Aerial photographs taken 1956. Field check 1989  
Polyconic projection, 1927 North American datum  
10,000-foot grids based on West Virginia coordinate system, north zone, and Pennsylvania coordinate system, south zone  
1000-meter Universal Transverse Mercator grid ticks, zone 17, shown in blue

Fine red dashed lines indicate selected fence and field lines where generally visible on aerial photographs. This information is un-checked  
Unlabeled wells are oil wells

DER  
MORGANTOWN  
FEB 11 PM 1:25