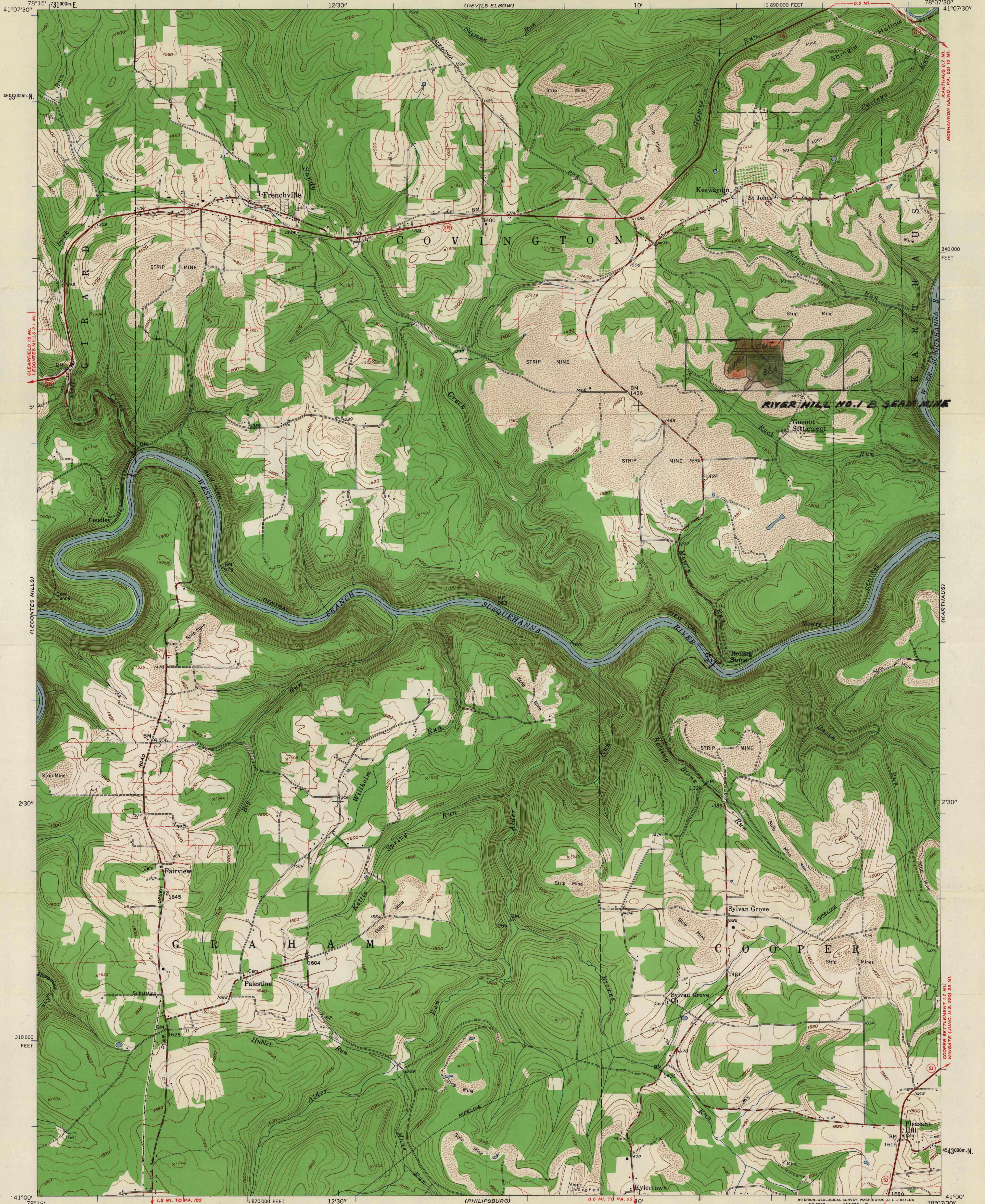


FIELD COPY



Mapped, edited, and published by the Geological Survey

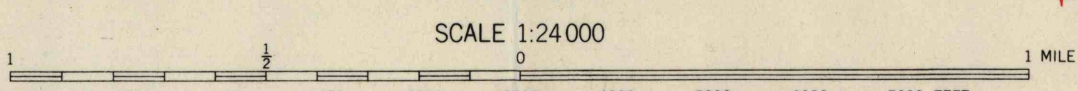
Control by USGS and USC&GS

Topography from aerial photographs by photogrammetric methods  
Aerial photographs taken 1957 and 1958. Field check 1959

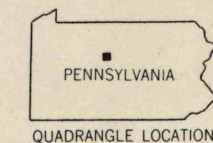
Polyconic projection. 1927 North American datum  
10,000-foot grid based on Pennsylvania coordinate system,  
north zone  
1000-meter Universal Transverse Mercator grid ticks,  
zone 17, shown in blue

Fine red dashed lines indicate selected fence and field lines where  
generally visible on aerial photographs. This information is unchecked

APPROXIMATE MEAN  
MAGNETIC NORTH  
DECLINATION, 1959



CONTOUR INTERVAL 20 FEET  
DATUM IS MEAN SEA LEVEL



ROAD CLASSIFICATION  
Heavy-duty ——— Light-duty ———  
Medium-duty ——— Unimproved dirt - - - - -  
State Route ○

FRENCHVILLE, PA.  
SW 1/4 KARTHUS 15' QUADRANGLE  
N 4100-W 7807.5/7.5

1959

THIS MAP COMPLIES WITH NATIONAL MAP ACCURACY STANDARDS  
FOR SALE BY U. S. GEOLOGICAL SURVEY, WASHINGTON 25, D. C.  
A FOLDER DESCRIBING TOPOGRAPHIC MAPS AND SYMBOLS IS AVAILABLE ON REQUEST