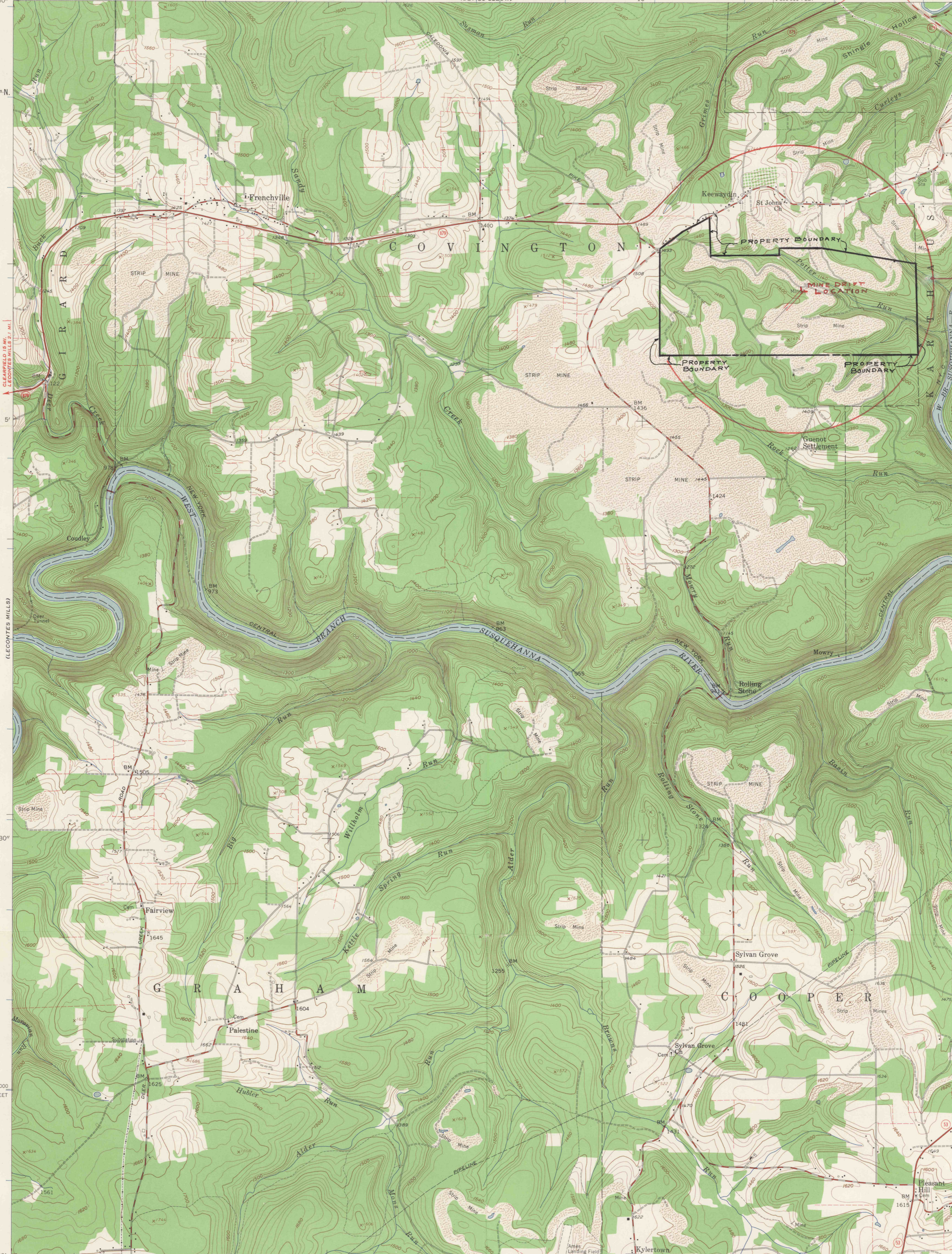


78°15' 41°07'30" 12°30' (DEVILS ELBOW) 10' 1 890 000 FEET 0.5 MI 78°07'30" 41°07'30"

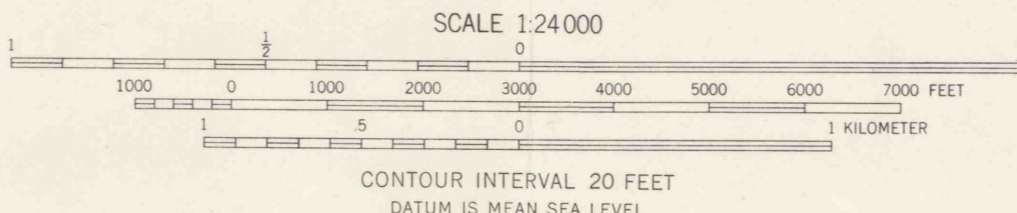
4550000m N.



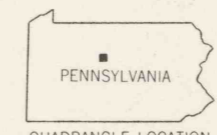
MOSHANNON FALLS
MINING CO.
CLEARFIELD PA.
LOCATION OF
MINE & COAL LAND
CLEARFIELD, PA.
AUG 26, 1966
ROY C. KINDIG
REG. ENGR.

Mapped, edited, and published by the Geological Survey
Control by USGS and USC&GS
Topography from aerial photographs by photogrammetric methods
Aerial photographs taken 1957 and 1958. Field check 1959
Polyconic projection. 1927 North American datum
10,000-foot grid based on Pennsylvania coordinate system,
north zone
1000-meter Universal Transverse Mercator grid ticks,
zone 17, shown in blue
Fine red dashed lines indicate selected fence and field lines where
generally visible on aerial photographs. This information is unchecked

7°
MAGNETIC NORTH
APPROXIMATE MEAN
DECLINATION, 1959



ROAD CLASSIFICATION
Heavy-duty ——— Light-duty ———
Medium-duty ——— Unimproved dirt ———
○ State Route



FRENCHVILLE, PA.
SW 1/4 KARTHUS 15' QUADRANGLE
N4100-W7807.5/7.5