

**READE TOWNSHIP
CAMBRIA COUNTY
PERMIT NUMBER - 66-1
B-OR LOWER KITTANNING SEAM**

UNITED STATES
DEPARTMENT OF THE INTERIOR
GEOLOGICAL SURVEY

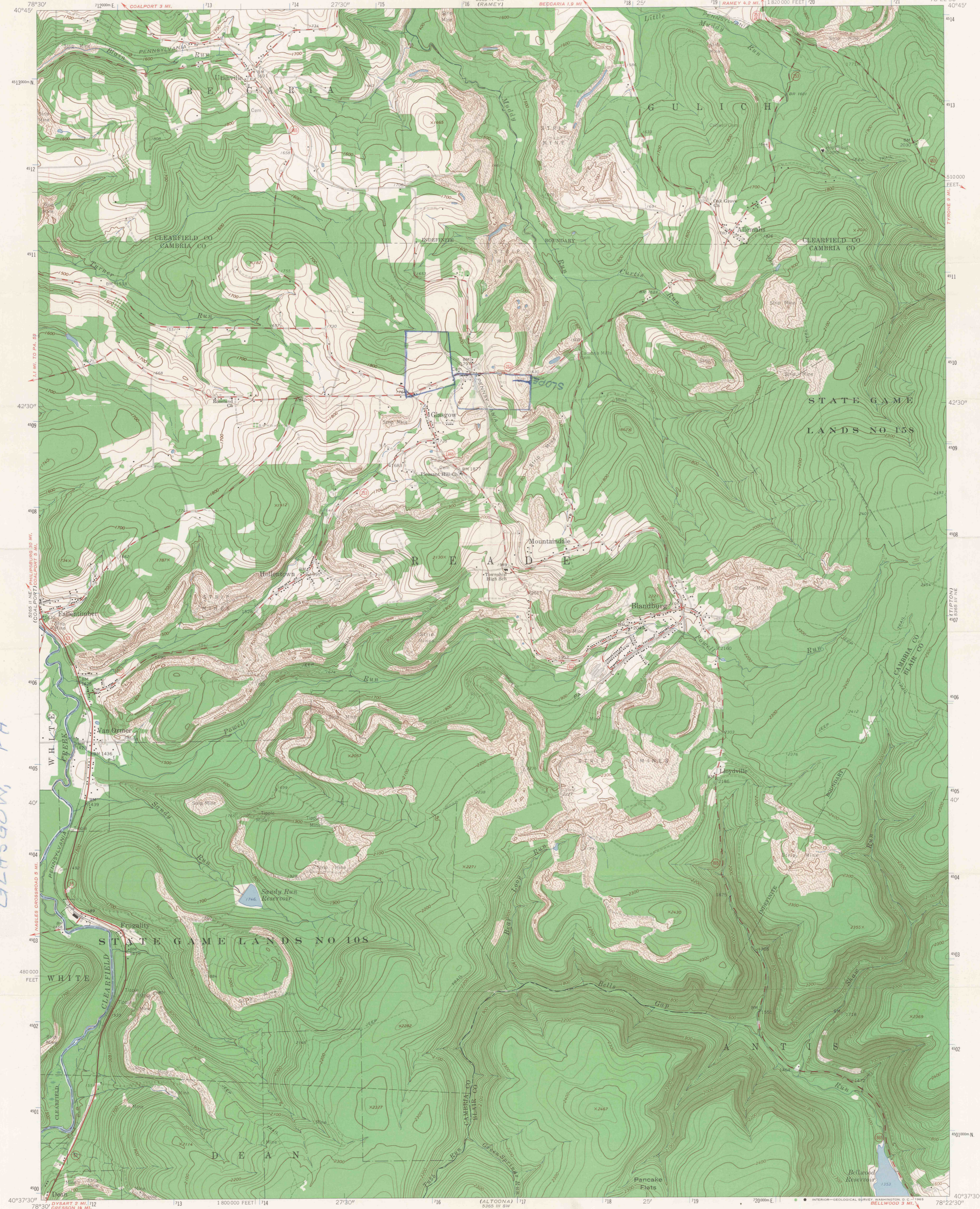
STATE OF PENNSYLVANIA
DEPARTMENT OF INTERNAL AFFAIRS
TOPOGRAPHIC AND GEOLOGIC SURVEY

BLANDBURG QUADRANGLE
PENNSYLVANIA
7.5 MINUTE SERIES (TOPOGRAPHIC)
NW/4 ALTOONA 15' QUADRANGLE

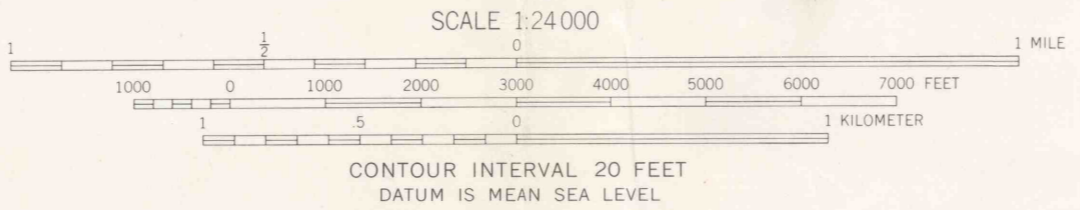
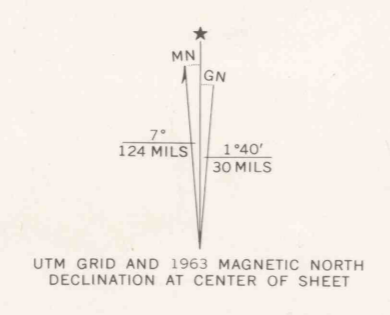
J.L. BANFIELD REG. ENG.
COLVER, PA. 8-10-66

MILLER BROS. COAL CO.
LOWER KITTANNING SEAM
GLASGOW, PA

FIELD COPY

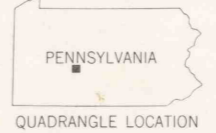


Maped, edited, and published by the Geological Survey
Control by USGS and USC&GS
Topography by photogrammetric methods from aerial
photographs taken 1962. Field checked 1963
Polyconic projection. 1927 North American datum
10,000-foot grid based on Pennsylvania coordinate system, south zone
1000-meter Universal Transverse Mercator grid ticks,
zone 17, shown in blue
Fine red dashed lines indicate selected fence and field lines where
generally visible on aerial photographs. This information is unchecked



ROAD CLASSIFICATION

Heavy-duty	Light-duty
Medium-duty	Unimproved dirt
○ State Route	



THIS MAP COMPLIES WITH NATIONAL MAP ACCURACY STANDARDS
FOR SALE BY U. S. GEOLOGICAL SURVEY, WASHINGTON 25, D. C.
A FOLDER DESCRIBING TOPOGRAPHIC MAPS AND SYMBOLS IS AVAILABLE ON REQUEST

BLANDBURG, PA.
NW/4 ALTOONA 15' QUADRANGLE
N4037.5—W7822.5/7.5
1963
AMS 5365 III NW—SERIES V83

PEN-ON-WES-MAP COMPANY
PHONE 336-0846 511 MAGEE BLDG.
336 1/2 W. 4th AVE. - PHN. PA. 15222