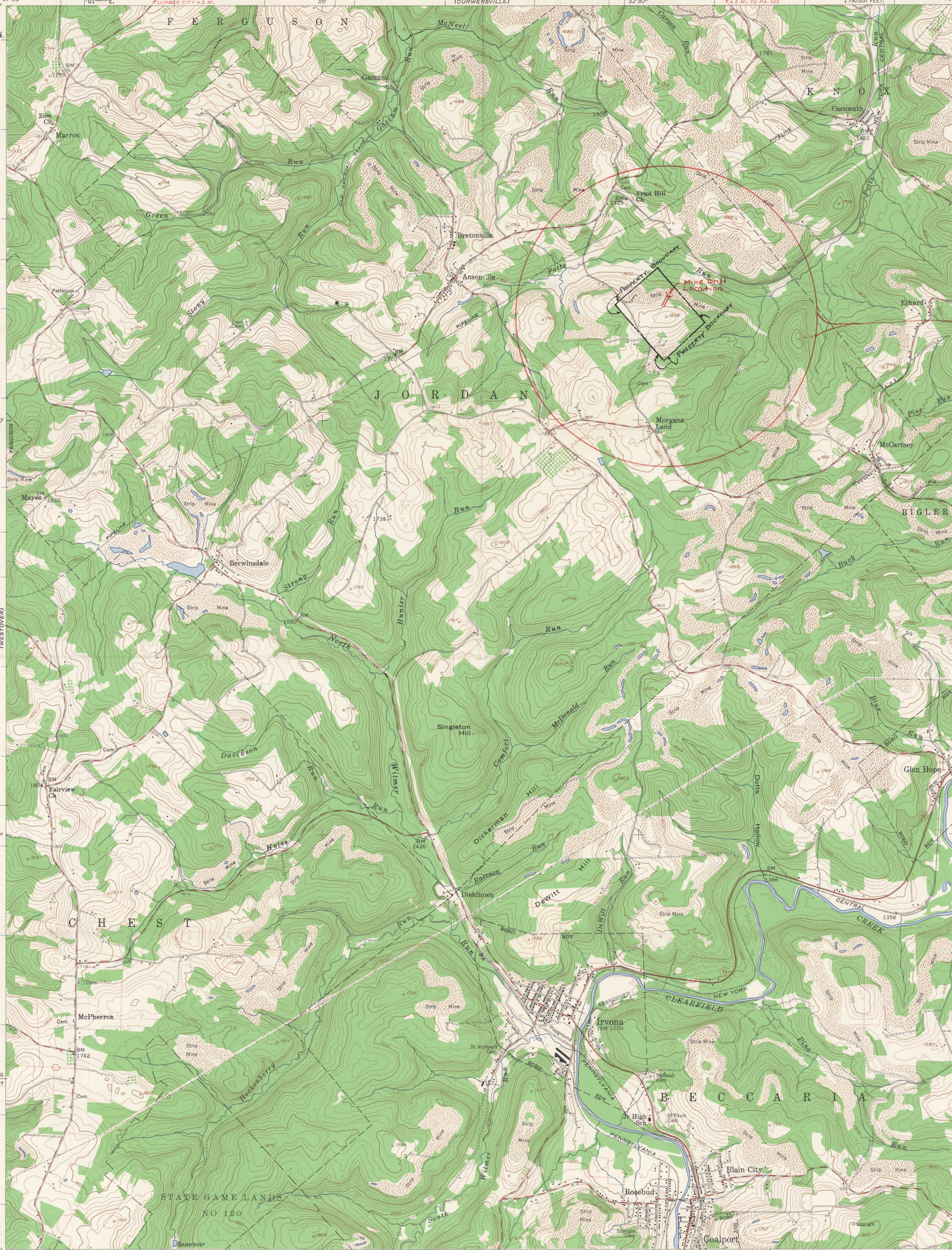


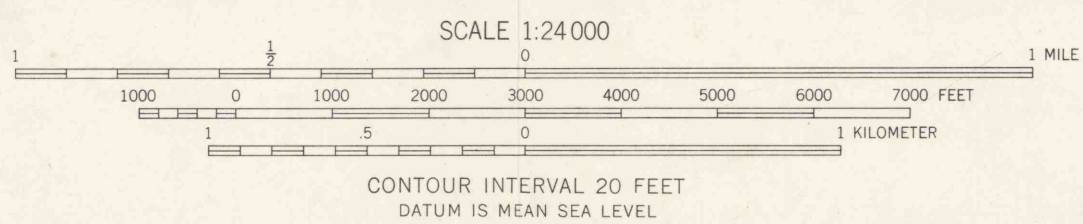


JOR. NOX COAL COMP.
RAYMOND WITHEROW
NEW MILLPORT, PA.
LOCATION OF
MINE & MINING PROP.
CLEARFIELD PA.
JULY 30, 1966
ROY C. KINDIG
REG. ENGR.

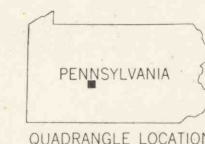
FIELD COPY



Maped, edited, and published by the Geological Survey
Control by USGS and USC&GS
Topography from aerial photographs by photogrammetric methods
Aerial photographs taken 1957. Field check 1959
Polyconic projection. 1927 North American datum
10,000-foot grid based on Pennsylvania coordinate system,
north zone
1000-meter Universal Transverse Mercator grid ticks,
zone 17, shown in blue
Fine red dashed lines indicate selected fence and field lines
visible on aerial photographs. This information is unchecked
Unchecked elevations are shown in brown



ROAD CLASSIFICATION
Heavy-duty ——— Light-duty ———
Medium-duty ——— Unimproved dirt - - - - -
○ Slate Route



IRVONA, PA.
SE 1/4 CURWENSVILLE 15' QUADRANGLE
N 4045—W 7830/7.5

1959

THIS MAP COMPLIES WITH NATIONAL MAP ACCURACY STANDARDS
FOR SALE BY U. S. GEOLOGICAL SURVEY, WASHINGTON 25, D. C.
A FOLDER DESCRIBING TOPOGRAPHIC MAPS AND SYMBOLS IS AVAILABLE ON REQUEST