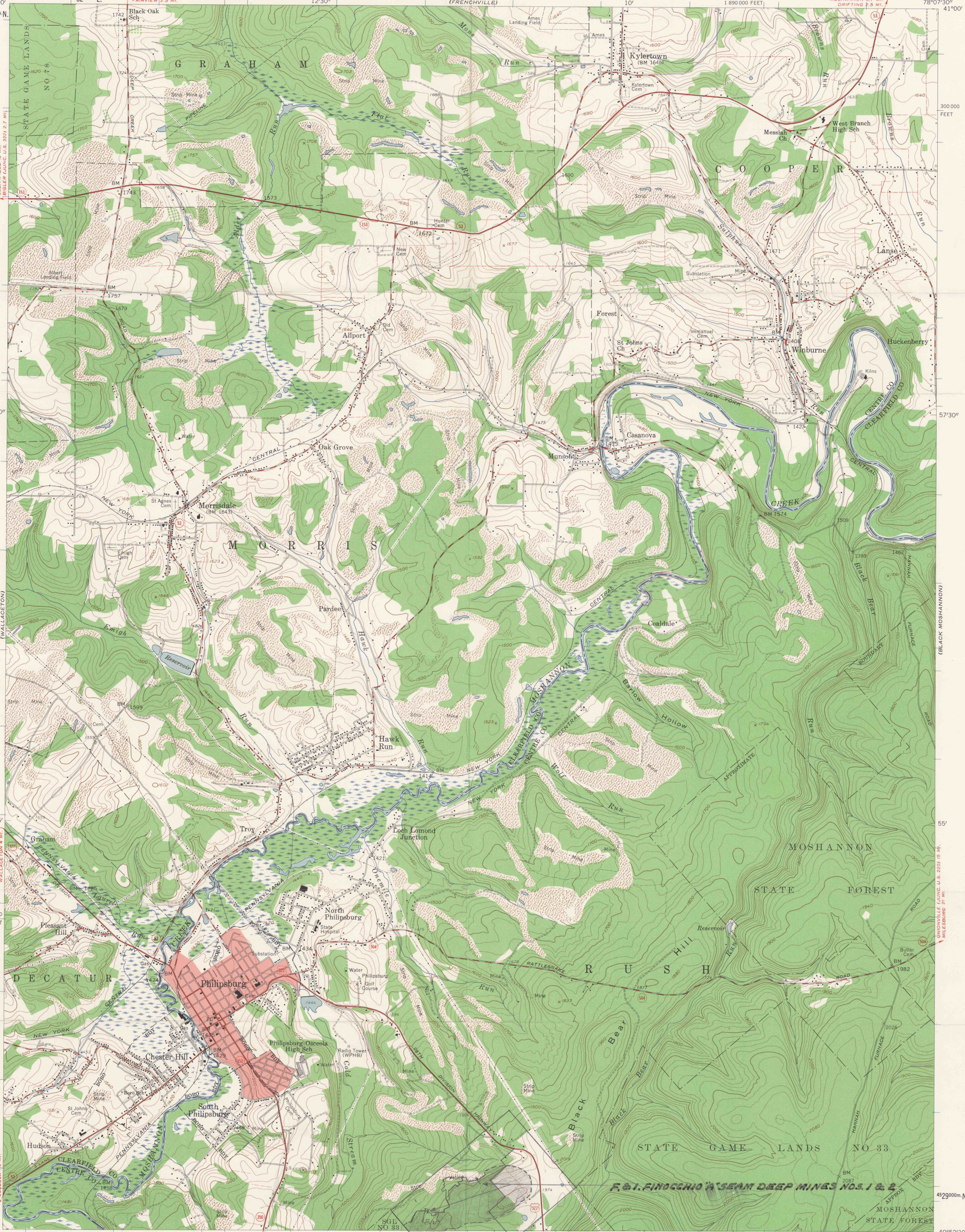
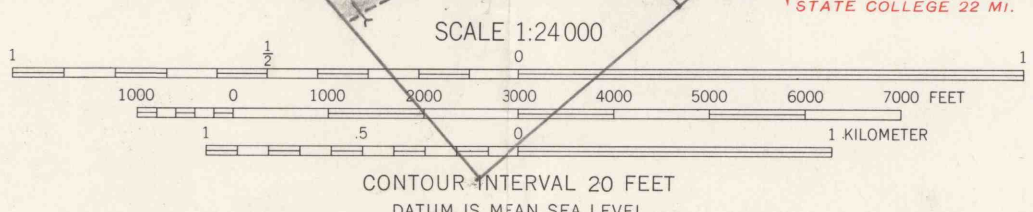


FIELD COPY

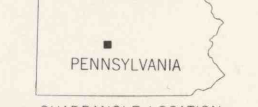


Mapped, edited, and published by the Geological Survey
Control by USGS and USC&GS
Topography from aerial photographs by photogrammetric methods
Aerial photographs taken 1957. Field check 1959
Polyconic projection. 1927 North American datum
10,000-foot grid based on Pennsylvania coordinate system,
north zone
1000-meter Universal Transverse Mercator grid ticks,
zone 17, shown in blue
Red tint indicates area in which only
landmark buildings are shown
Fine red dashed lines indicate selected fence and field lines
visible on aerial photographs. This information is unchecked
Unchecked elevations are shown in brown

TRUE NORTH
MAGNETIC NORTH
APPROXIMATE MEAN
DECLINATION, 1959



ROAD CLASSIFICATION
Heavy-duty ——— Light-duty - - - - -
Medium-duty ——— Unimproved dirt - - - - -
U. S. Route ——— State Route ———



THIS MAP COMPLIES WITH NATIONAL MAP ACCURACY STANDARDS
FOR SALE BY U. S. GEOLOGICAL SURVEY, WASHINGTON 25, D. C.
A FOLDER DESCRIBING TOPOGRAPHIC MAPS AND SYMBOLS IS AVAILABLE ON REQUEST

**RUSH TOWNSHIP
CENTRE COUNTY
PERMIT NUMBER-154-1
"A"- OR BROOKVILLE SEAM**

PHILPSBURG, PA.
NW 1/4 PHILPSBURG 15' QUADRANGLE
N4052.5-W7807.5/7.5
1959