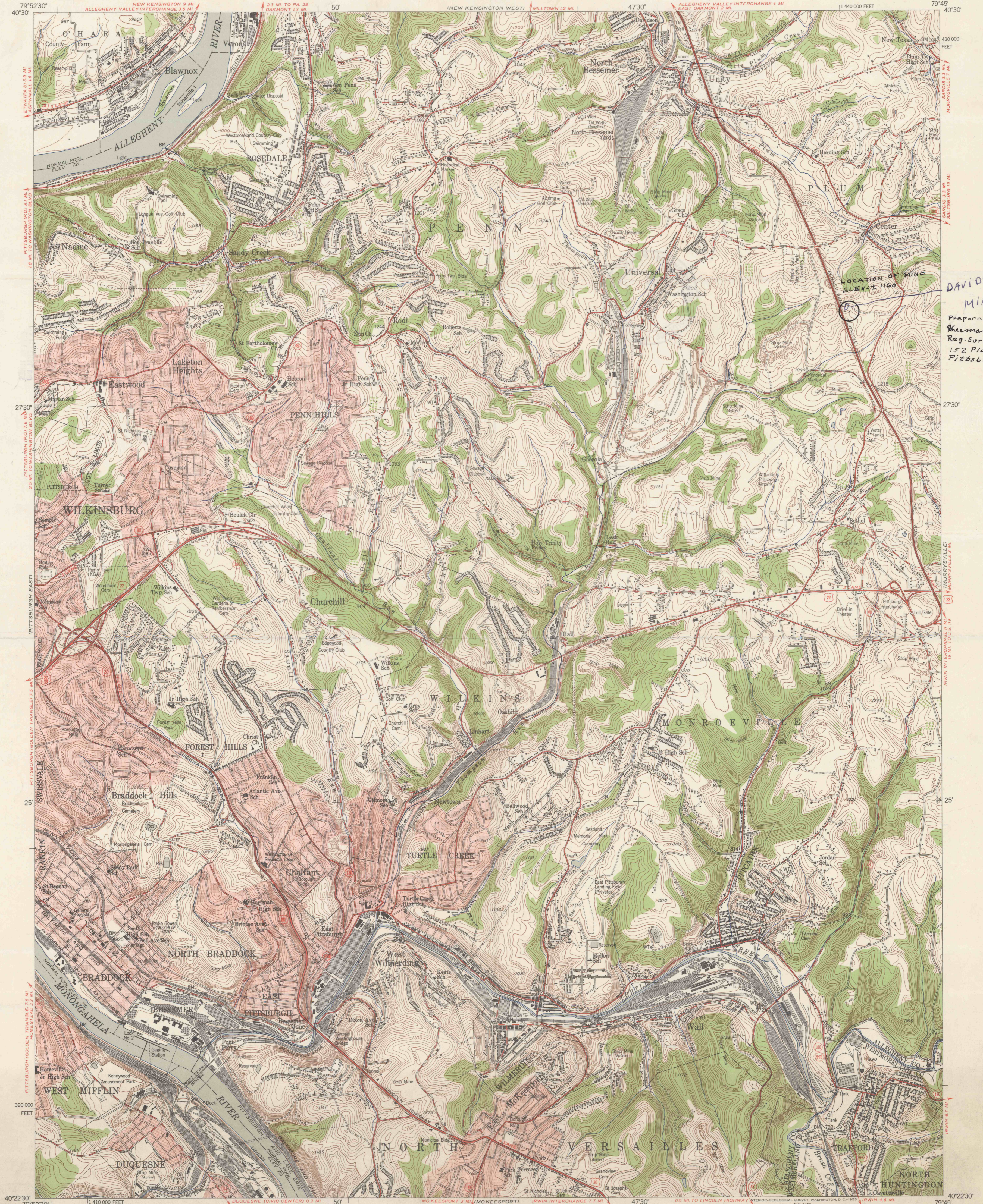
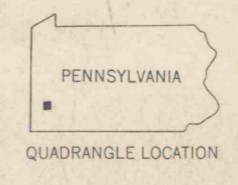
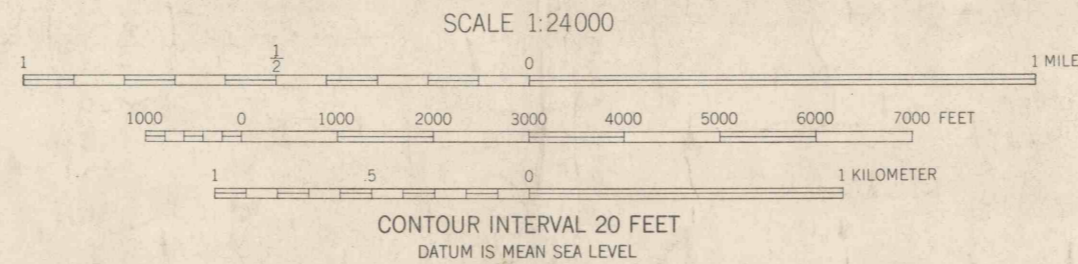
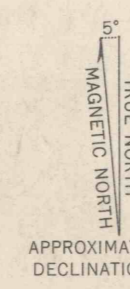


NEW KENSINGTON EAST



DAVIDSON
MINE
Prepared by
Kerman H. DeLuneta
Reg. Surveyor 483 E
152 Plum Ave.
Pittsburgh, Pa. 15239

Mapped, edited, and published by the Geological Survey
Control by USGS, USC&GS and City of Pittsburgh
Topography from aerial photographs by multiplex methods
Aerial photographs taken 1952. Field check 1953
Polyconic projection, 1927 North American datum
10,000-foot grid based on Pennsylvania coordinate system,
south zone
Red tint indicates areas in which only
landmark buildings are shown
Contours in strip mine and mine dump areas
compiled from 1952 photography
All mining features on this map are inactive
unless otherwise indicated



ROAD CLASSIFICATION

Heavy-duty	Light-duty
Medium-duty	Unimproved dirt
U.S. Route	State Route

BRADDOCK, PA.
NE/4 PITTSBURGH 15 QUADRANGLE
N4022.5-W7945.7/5

1953

THIS MAP COMPLIES WITH NATIONAL MAP ACCURACY STANDARDS
FOR SALE BY U. S. GEOLOGICAL SURVEY, WASHINGTON 25, D. C.
A FOLDER DESCRIBING TOPOGRAPHIC MAPS AND SYMBOLS IS AVAILABLE ON REQUEST