

Pete Bernard, Applicant  
Map submitted in compliance with the  
BITUMINOUS SUBSIDENCE AND LAND  
CONSERVATION ACT OF 1966  
Known as Bernard Coal Co., No. 2  
Mining in Lower Freeport seam  
Situate in West Carroll Twp., Cambria Co., Pa.  
Application dated: October 4, 1966

FIELD COPY

Prepared by: Martin C. Kirsch, PE  
P. O. Box 597  
PERMIT NUMBER - 231-I-Spangler, Pa. 15775

1/4 MI. TO U.S. 422  
RICHTOWAY 3.4 MI.

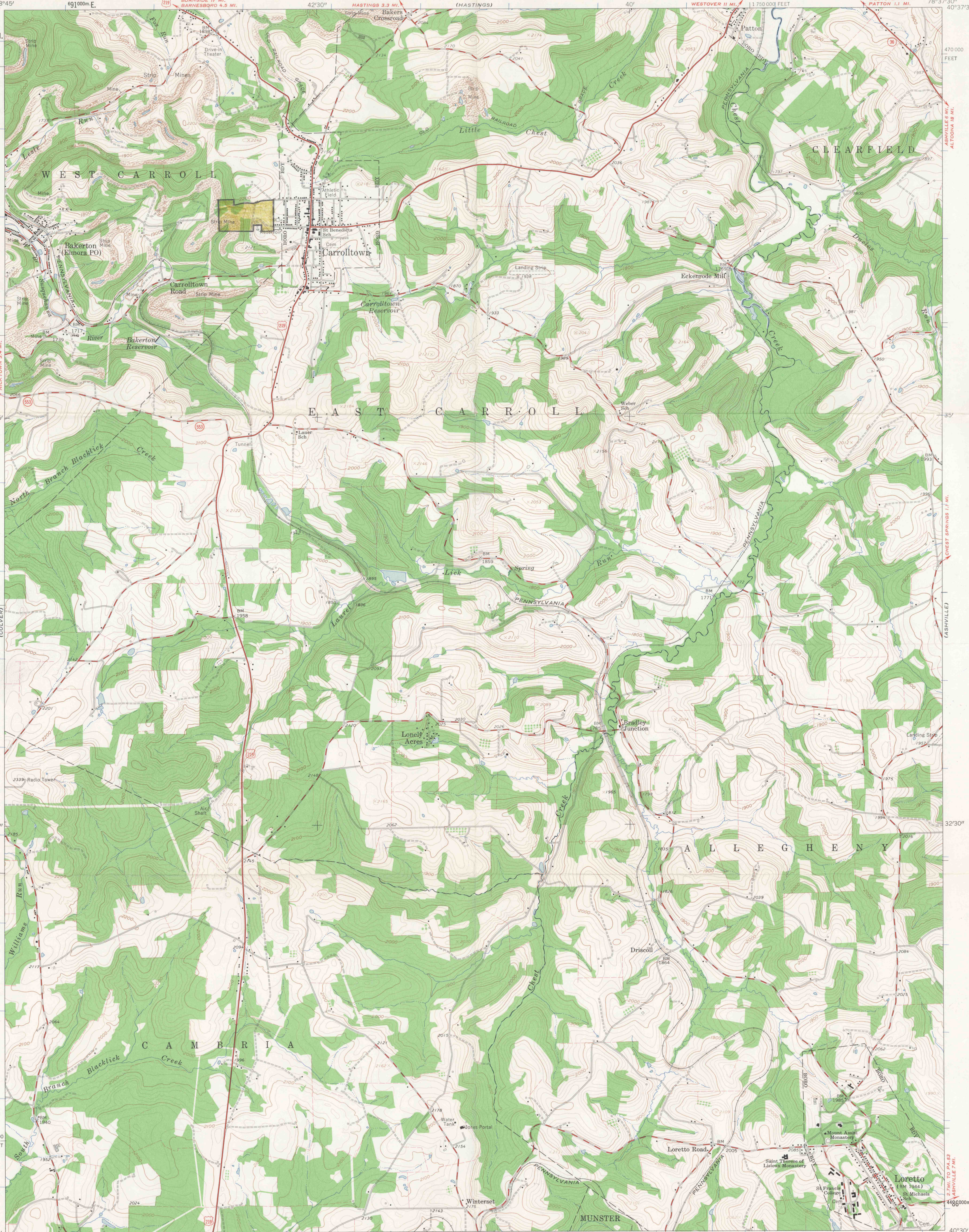
1/4 MI. TO U.S. 422  
RICHTOWAY 3.4 MI.

1/4 MI. TO U.S. 422  
RICHTOWAY 3.4 MI.

1/4 MI. TO U.S. 422  
RICHTOWAY 3.4 MI.

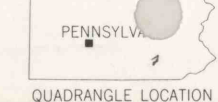
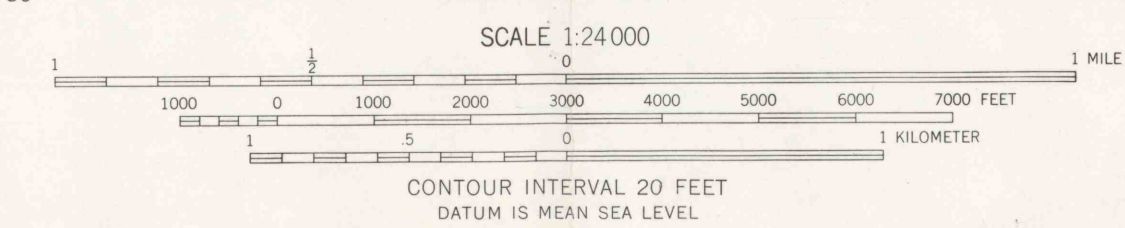
1/4 MI. TO U.S. 422  
RICHTOWAY 3.4 MI.

1/4 MI. TO U.S. 422  
RICHTOWAY 3.4 MI.



Mapped, edited, and published by the Geological Survey  
Control by USGS and USC&GS  
Topography by photogrammetric methods from aerial  
photographs taken 1958. Field checked 1961  
Polyconic projection. 1927 North American datum  
10,000-foot grid based on Pennsylvania coordinate system,  
south zone  
1000-meter Universal Transverse Mercator grid ticks,  
zone 17, shown in blue  
Fine red dashed lines indicate selected fence and field lines where

APPROXIMATE MEAN  
DECLINATION, 1961



CARROLLTOWN, PA.  
SW 1/4 PATTON 15' QUADRANGLE