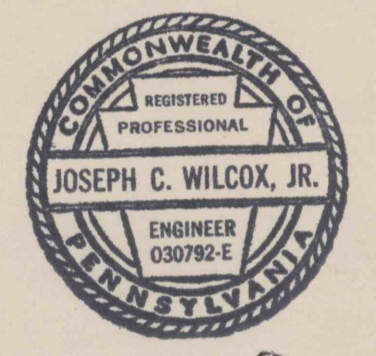


**SUBSIDENCE PERMIT  
BOUNDARY  
INDEX FOR 100' MAPS**

HELVETIA COAL COMPANY  
LUCERNE NO. 6 MINE  
PERMIT NO. **32841303**  
UPPER FREEPORT (E SEAM)  
BLACKLICK & CENTER TOWNSHIPS  
INDIANA COUNTY, PENNSYLVANIA

FINAL  
POSTING DATE 5/21 1990

SEAL —

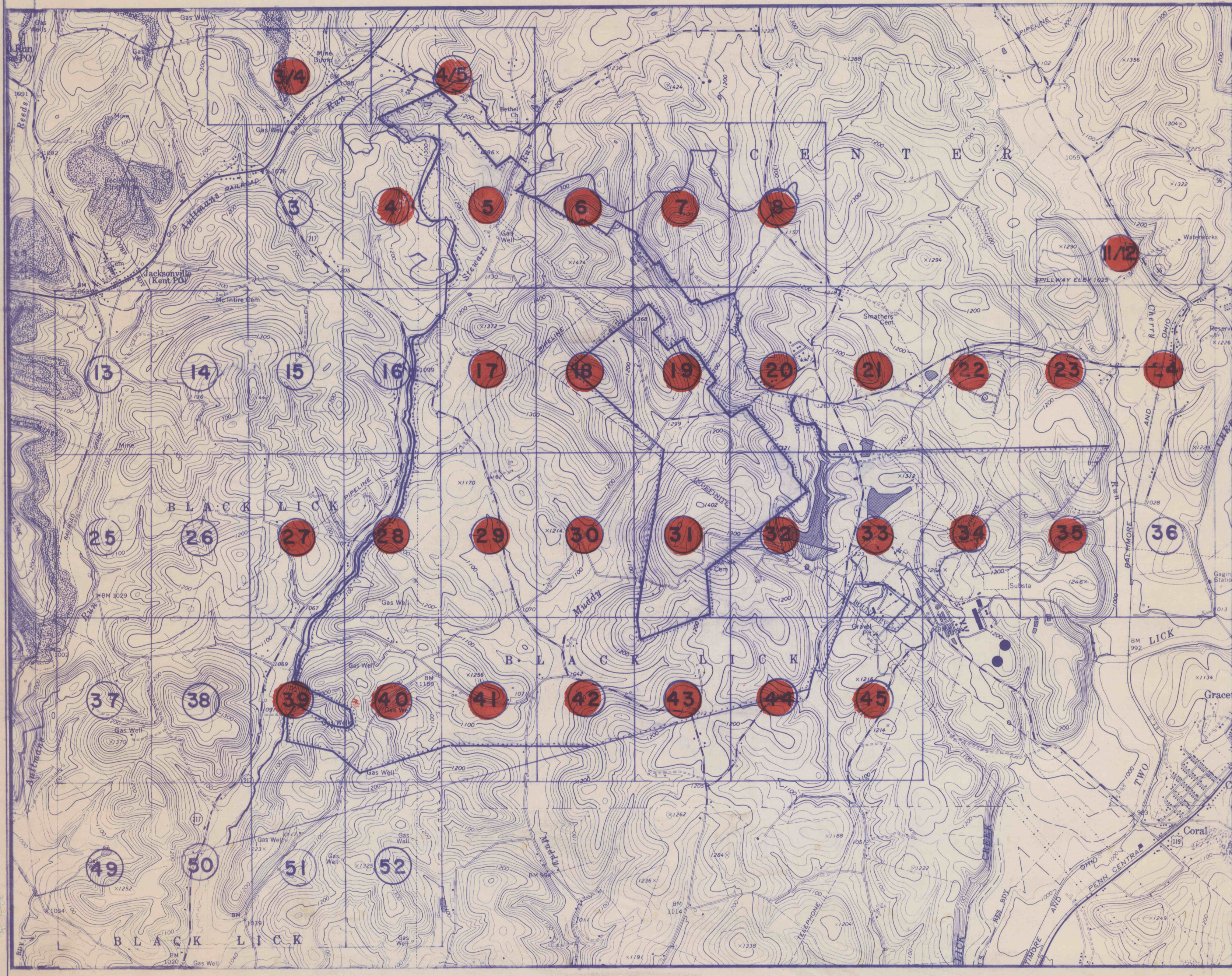
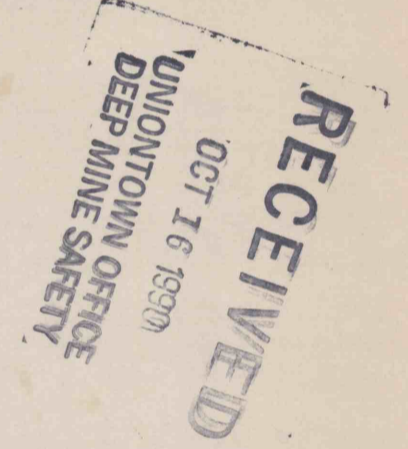


SIGNATURE *Joseph C. Wilcox, Jr.*

PREPARED BY \_\_\_\_\_

MAPS DEPICT CONTEMPLATED MINING  
FROM \_\_\_\_\_, 19\_\_\_\_  
TO \_\_\_\_\_, 19\_\_\_\_

**NO MINING CONTEMPLATED**



SCALE 1" = 2000'

MCINTYRE, INDIANA, BLAIRSVILLE & BOLIVAR  
7-1/2' U.S.G.S. QUADRANGLES

**●** = MAPS SUBMITTED  
BOREHOLES TO REMAIN OPEN FOR MONITORING,  
DEWATERING, AND SLUDGE DISPOSAL

**LEGEND FOR MAP SYMBOLS**

- |  |  |   |
|--|--|---|
| <ul style="list-style-type: none"> <li>⊙ ACTIVE GAS WELL</li> <li>○ INACTIVE GAS WELL</li> <li>● WATER WELL</li> <li>☼ SPRING</li> <li>○ POND</li> <li>⊙ FLOW MEASUREMENT POINT</li> <li>— STREAM - PERENNIAL</li> <li>- - - STREAM - INTERMITTENT</li> <li>- - - PIPELINE OR UNDERGROUND CABLE (SIZE, OIL, OR GAS AS LABELED)</li> <li>- - - PROPERTY LINE</li> <li>● - - - POWER LINE</li> <li>- - - COAL CONTOUR LINE</li> <li>⊥ - - - NO COAL ZONE</li> <li>⊥ - - - CROPLINE</li> <li>- - - 100' COVER LINE</li> <li>- - - 6 MONTH SUBSIDENCE LINE (CONTEMPLATED MINING &amp; DATE)</li> <li>- - - PERMIT BOUNDARY</li> <li>- - - 5 YEAR SUBSIDENCE LINE</li> <li>LR32014 STATE ROAD</li> <li>- - - UNIMPROVED ROAD</li> </ul> | <ul style="list-style-type: none"> <li>T646 TOWNSHIP ROAD</li> <li>— BRIDGE</li> <li>— CULVERT</li> <li>1234X ELEVATIONS - ROAD</li> <li>1170 ELEVATIONS - STREAM</li> <li>++++ RAILROAD TRACKS</li> <li>△ HORIZONTAL OR VERTICAL CONTROL, SURVEY STATIONS</li> <li>◇ DIAMOND (DDH) OR AIR DRILL (ADH) HOLE AS LABELED</li> <li>SWAMP OR MARSH</li> <li>◇ PROTECTED STRUCTURE</li> <li>□ NONPROTECTED STRUCTURE</li> <li>3X DWELLING - BUILT AFTER APRIL 1966</li> <li>⊕ CHURCH</li> <li>⊕ CEMETERY</li> <li>⊕ AIR SHAFT (DOUBLE COMPARTMENT)</li> <li>⊕ PILLARED</li> <li>⊕ OUTLINE OF PILLARED AREA UPPER OR LOWER SEAM</li> </ul> | <ul style="list-style-type: none"> <li>▨ MINING COMPLETED</li> <li>▨ CONSTRUCTED DIKE OR EMBANKMENT</li> <li>▨ TOE OF EXISTING SPILL, MINE ROCK OR COAL REFUSE PILE</li> <li>(NAME) ORIGINAL COAL OWNER, SHOWN FOR REFERENCE ONLY</li> <li>MAXIMUM ENTRY WIDTH - 20 feet</li> <li>MAXIMUM CROSS CUT WIDTH - 20 feet</li> <li>ALL MINING WITHIN 50% MINING AREA IS DONE ON CENTER LINE OF PROJECTIONS</li> <li>ALL MINING SHALL BE LEFT TOTALLY</li> </ul> |
|--|--|---|

ALL COAL IS OWNED BY ROCHESTER & COAL CO., UNLESS OTHERWISE DESIGNATED ON THE MAPS, AND LEASED TO HELVETIA COAL CO. NOTE: FIRST MINING INDICATES NO PILLAR REMOVAL