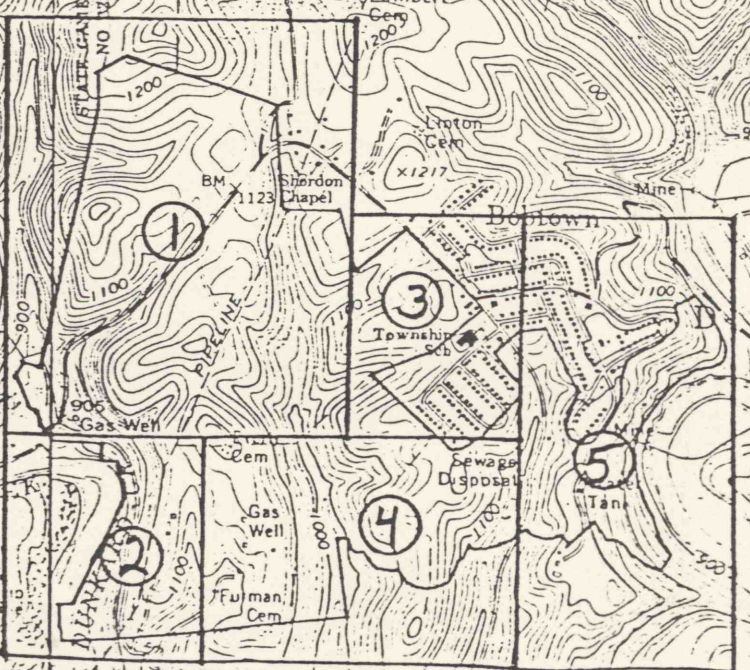


Tri-Ent Inc.
 Bren-Mar Mine
 — Outline of Mine Permit Area
 — Outline of 1" - 100' Map Sheets
 There is only one 1" - 400' Map Sheet
 Map Prepared by: R.E. McHugh, P.E.
 Pt. Marion, Penna.
 Scale: 1" - 2000' March 9, 1986



ROAD CLASSIFICATION
 Heavy-duty ——— Light-duty ———
 Medium-duty - - - - - Unimproved dirt ———
 Interstate Route □ U.S. Route □
GARARDS FORT, PA.
 1961
 AMPLIFIED BY 1984
 AMPLIFIED BY 1985

Mapped, edited, and published by the Geological Survey
 Control by USGS, USC&GS, and USCE
 Topography by photogrammetric methods from aerial photographs
 taken 1962 and 1963. Field checked 1964
 Polyconic projection. 1927 North American datum
 10,000-foot grid based on Pennsylvania coordinate system, south zone
 1000-meter Universal Transverse Mercator grid ticks,
 zone 17, shown in blue
 To place on the predicted North American Datum 1983
 move the projection lines 5 meters south and
 18 meters west as shown by dashed corner ticks
 There may be private inholdings within the boundaries of
 the National or State reservations shown on this map
 Fine red dashed lines indicate selected fence and field lines where

TAYLORTOWN 0.4 MI. 80° 00' 1370 000 FEET 87 89 57' 30" 890 (MORGANTOWN NORTH) 5063 III NW 92 POINT MARION 1.5 MI. 55' 43" POINT A

SCALE 1:24 000
 1000 0 1000 2000 3000 4000 5000 6000 7000 FEET
 1 0.5 1 KILOMETER
 COAST AND GEODETIC SURVEY
 NATIONAL COORDINATE SYSTEM DATUM OF 1929
SHEET LOCATION MAP
 THIS MAP COMPLIES WITH NATIONAL MAP ACCURACY STANDARDS
 FOR SALE BY U.S. GEOLOGICAL SURVEY RESTON, VIRGINIA 22092
 FOLDER DESCRIBING TOPOGRAPHIC MAPS AND SYMBOLS IS AVAILABLE ON REQUEST

UTM GRID AND 1976 MAGNETIC NORTH DECLINATION AT CENTER OF SHEET
 6° 107 MILS 0° 41' 12 MILS
 Roger M. McHugh