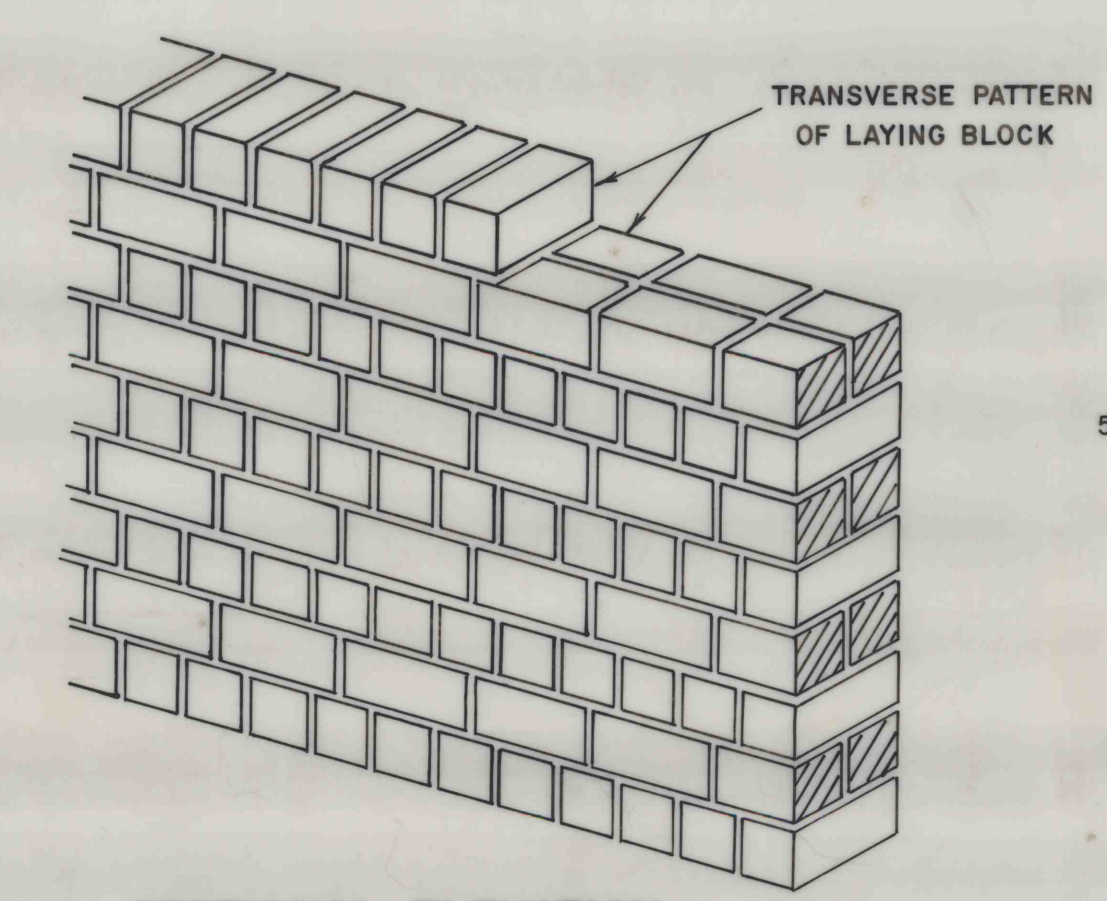


SHAFT

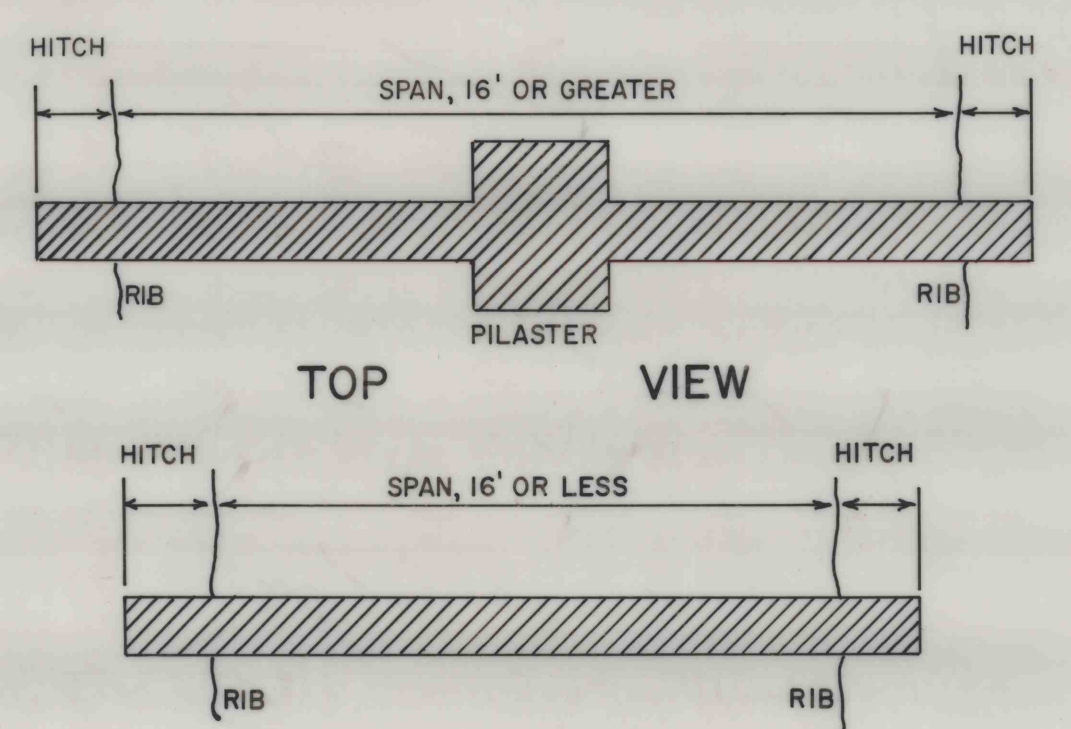
NOTE: ALL BUILDINGS IN THE PREPARATION PLANT / SUPPLY YARD AND PORTAL AREAS WILL BE DISMANTLED AND THE ENTIRE DISTURBED AREA WILL BE LEVELLED, COVERED WITH A MINIMUM OF 6 INCHES OF TOPSOIL AND SEEDED.

SEALS AND/OR BULKHEADS WILL BE OF SUFFICIENT THICKNESS AND STRENGTH TO PERFORM THE INTEND FUNCTION.

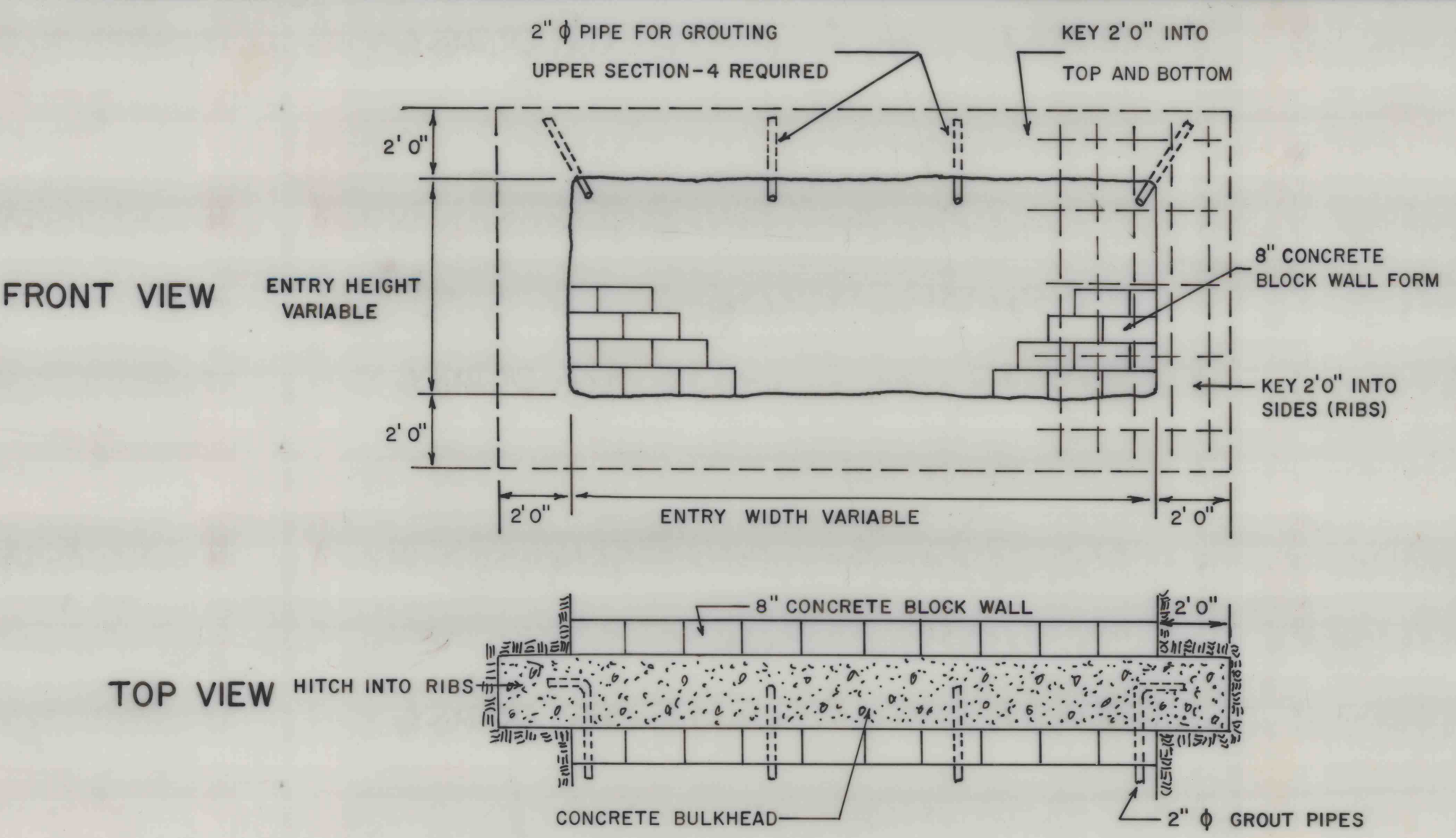
SEALS



SECTIONAL ELEVATION

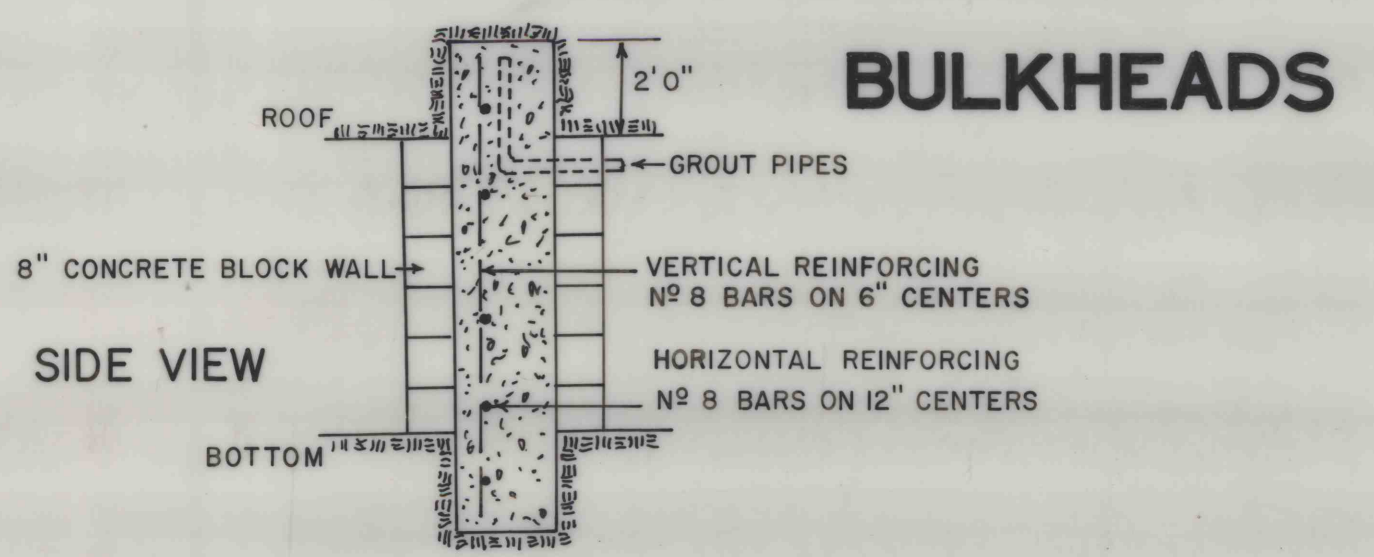


TOP VIEW



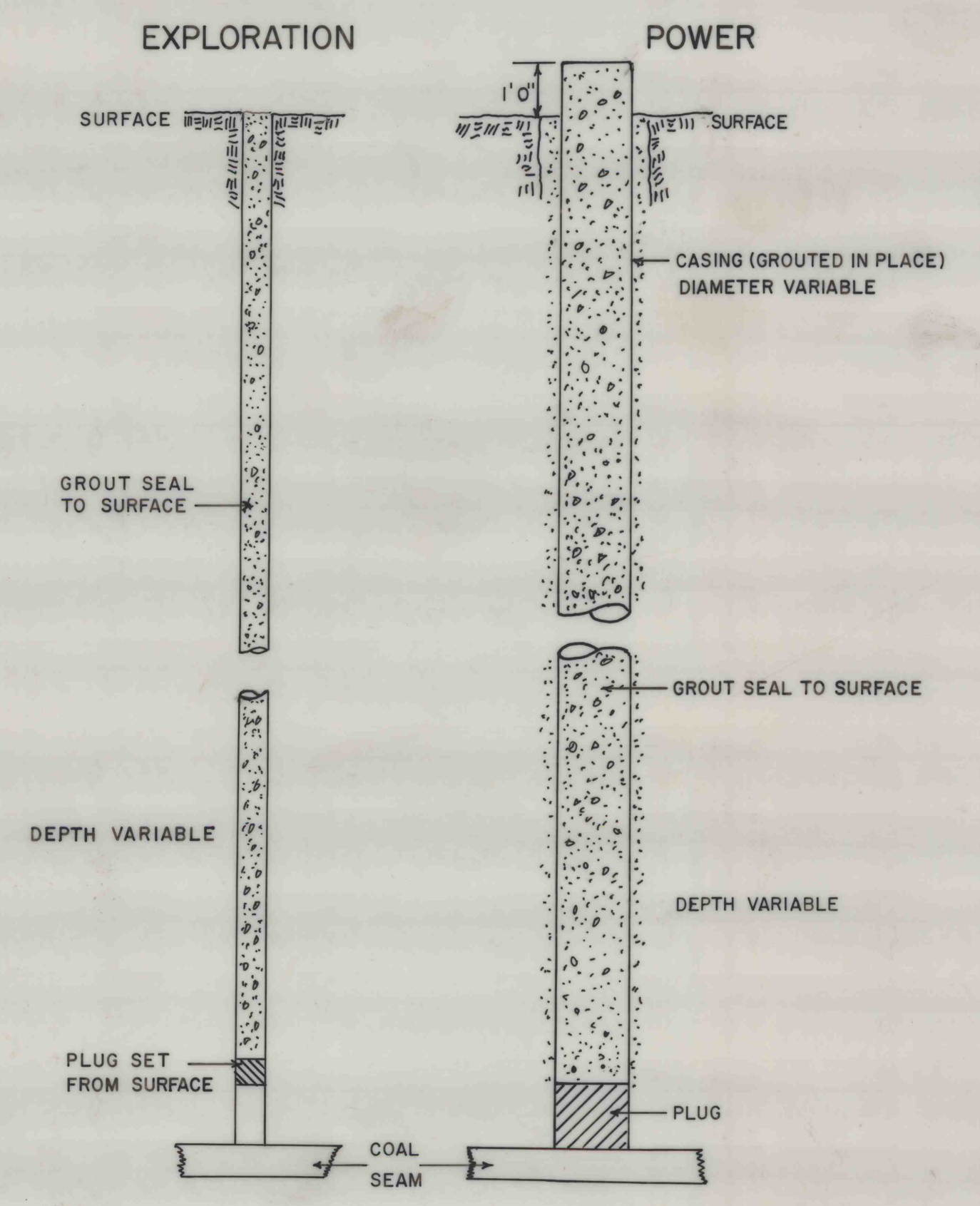
FRONT VIEW

TOP VIEW

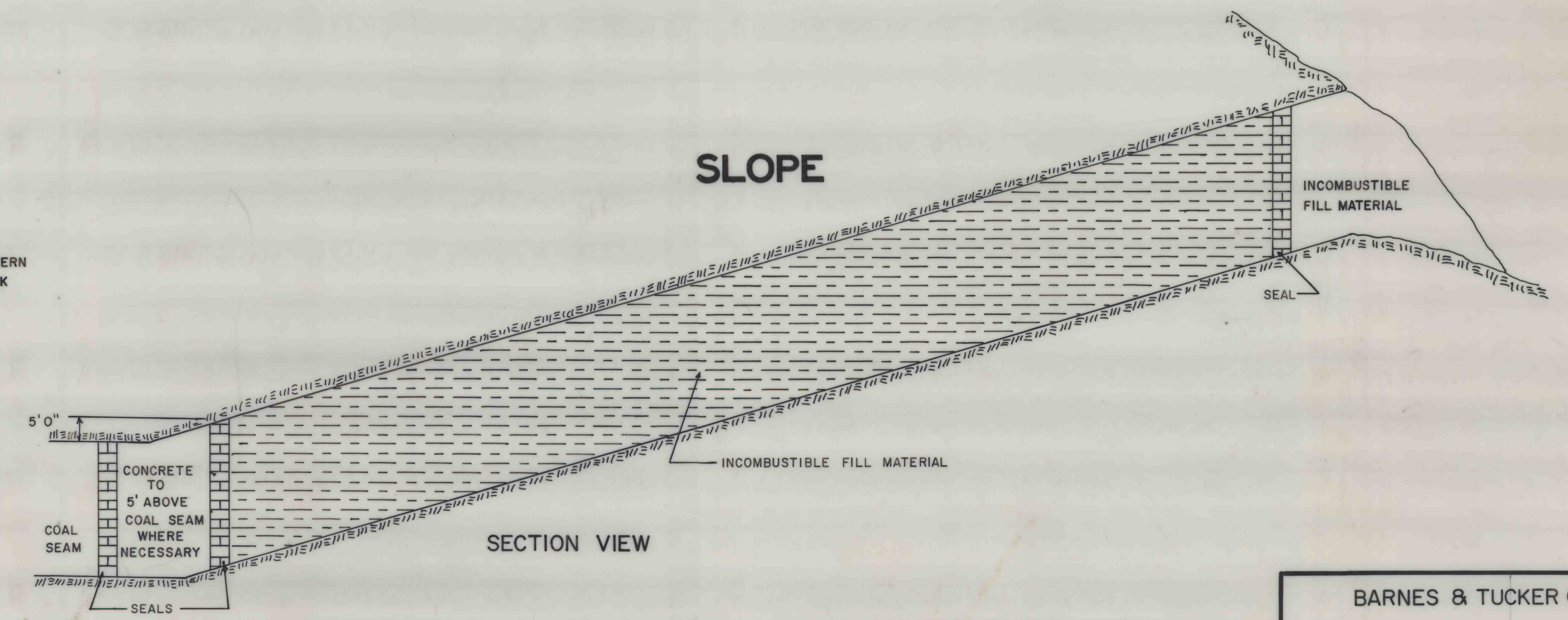


SIDE VIEW

BULKHEADS



BOREHOLES



SLOPE

SECTION VIEW

BARNES & TUCKER COMPANY
 TYPICAL SEALING PROCEDURES
 4211b
 Q15
 NO SCALE
 JUNE, 1984