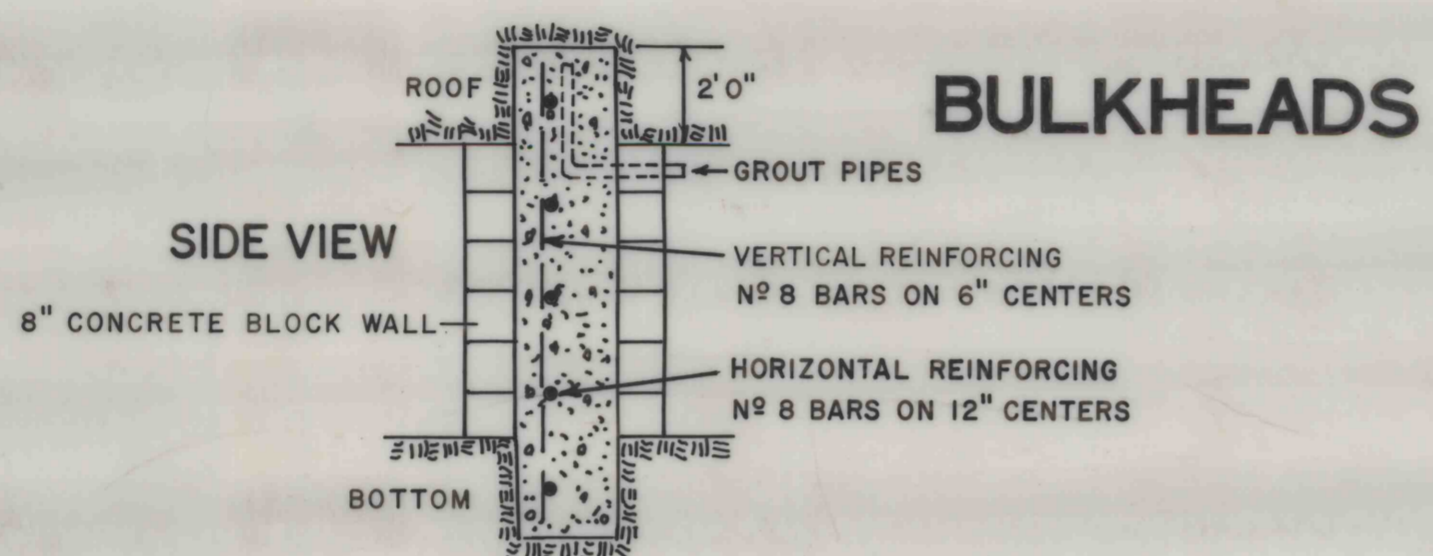
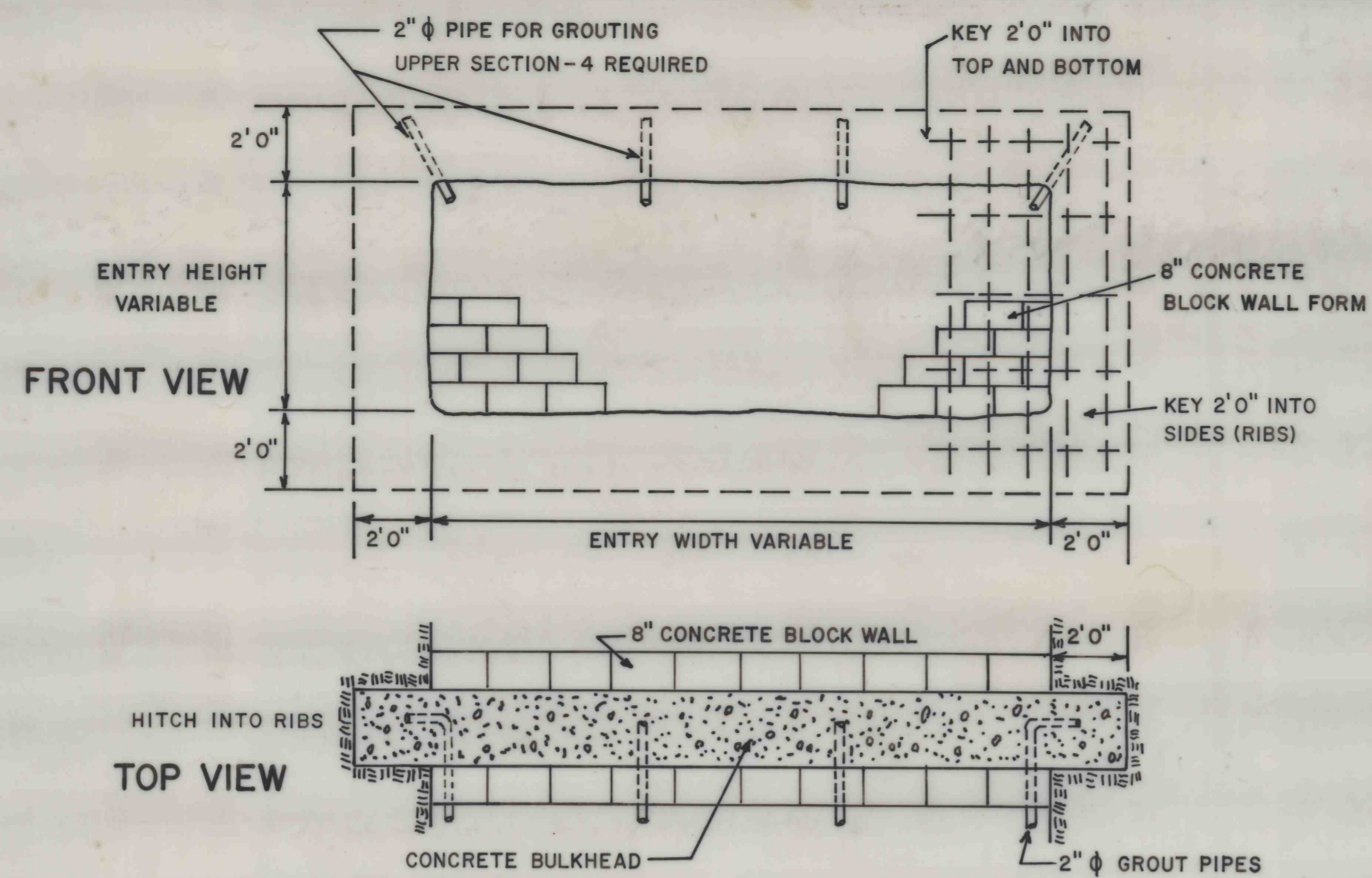
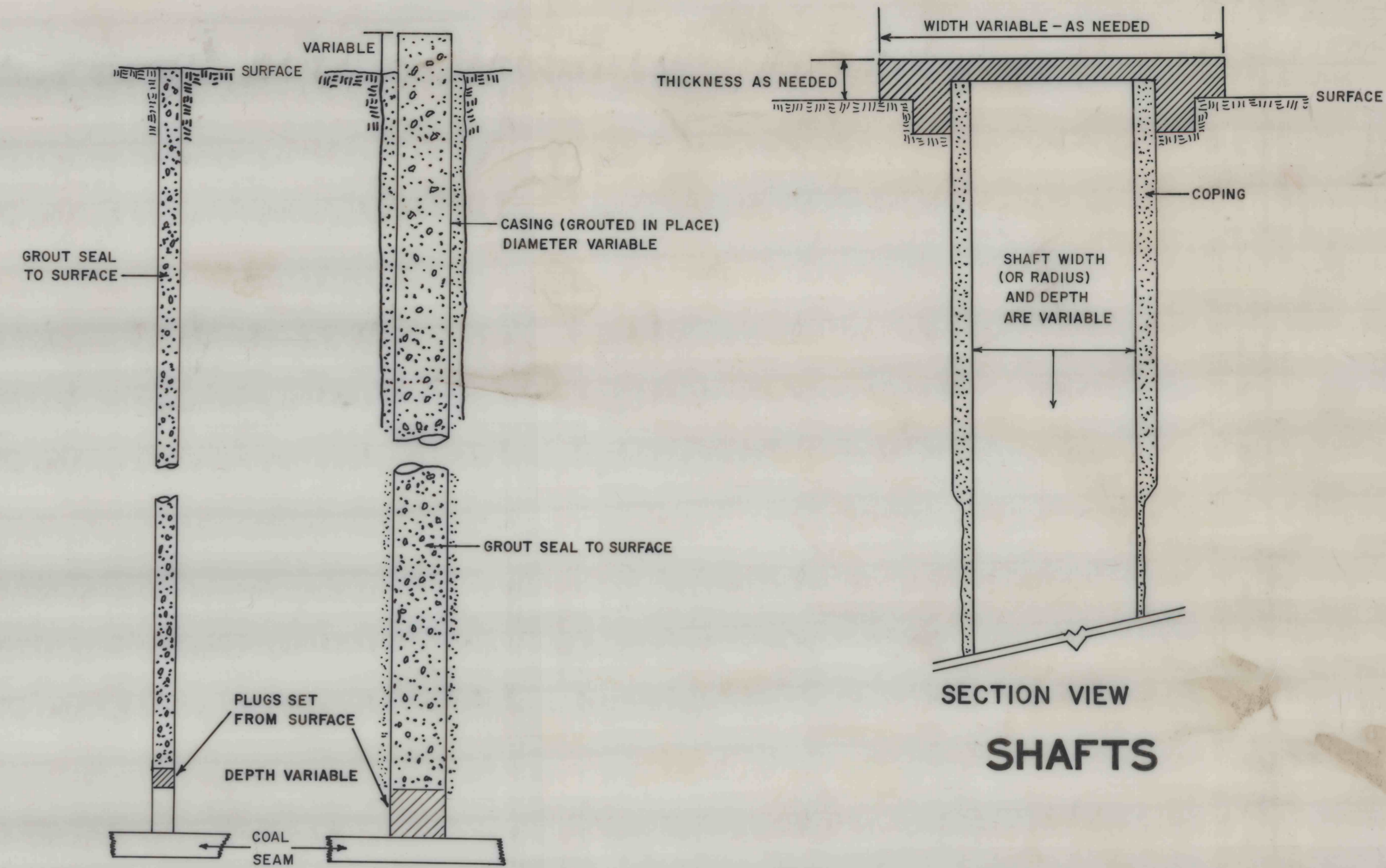


SEALS

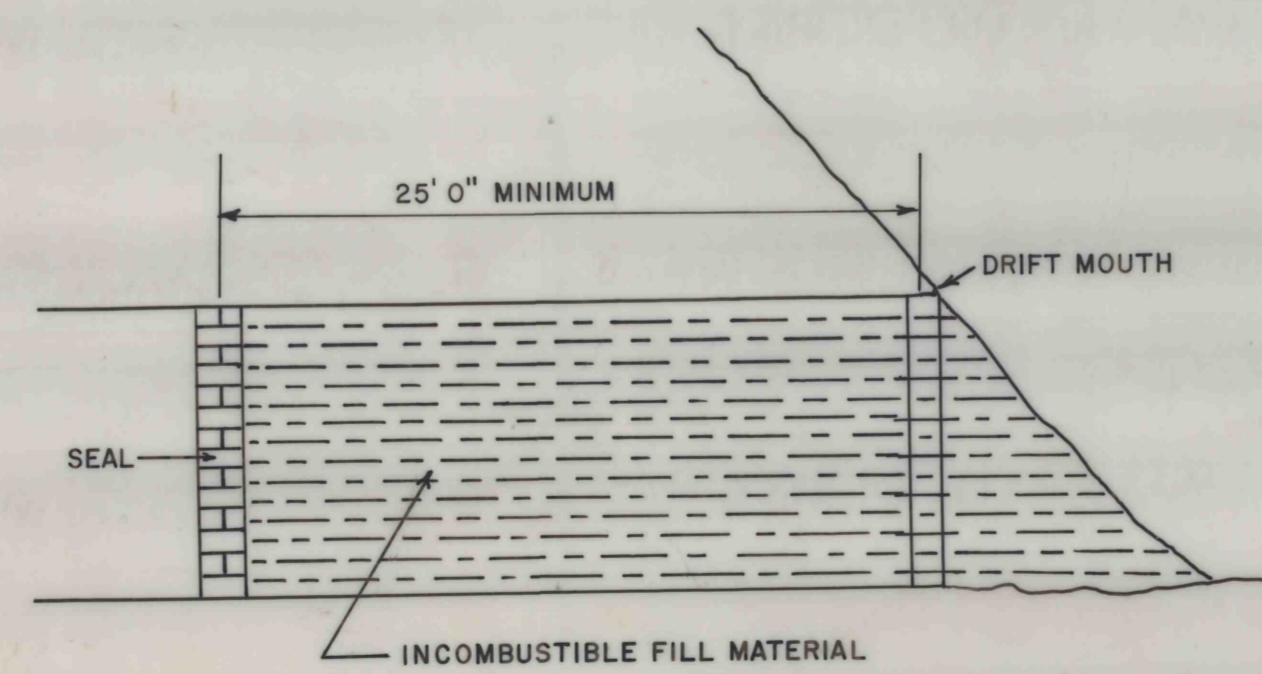
NOTE: THESE TYPICAL SEALING PROCEDURES ARE TO SUPPLEMENT THE WRITTEN MATERIAL IN PART II, SECTION C.4.



BULKHEADS

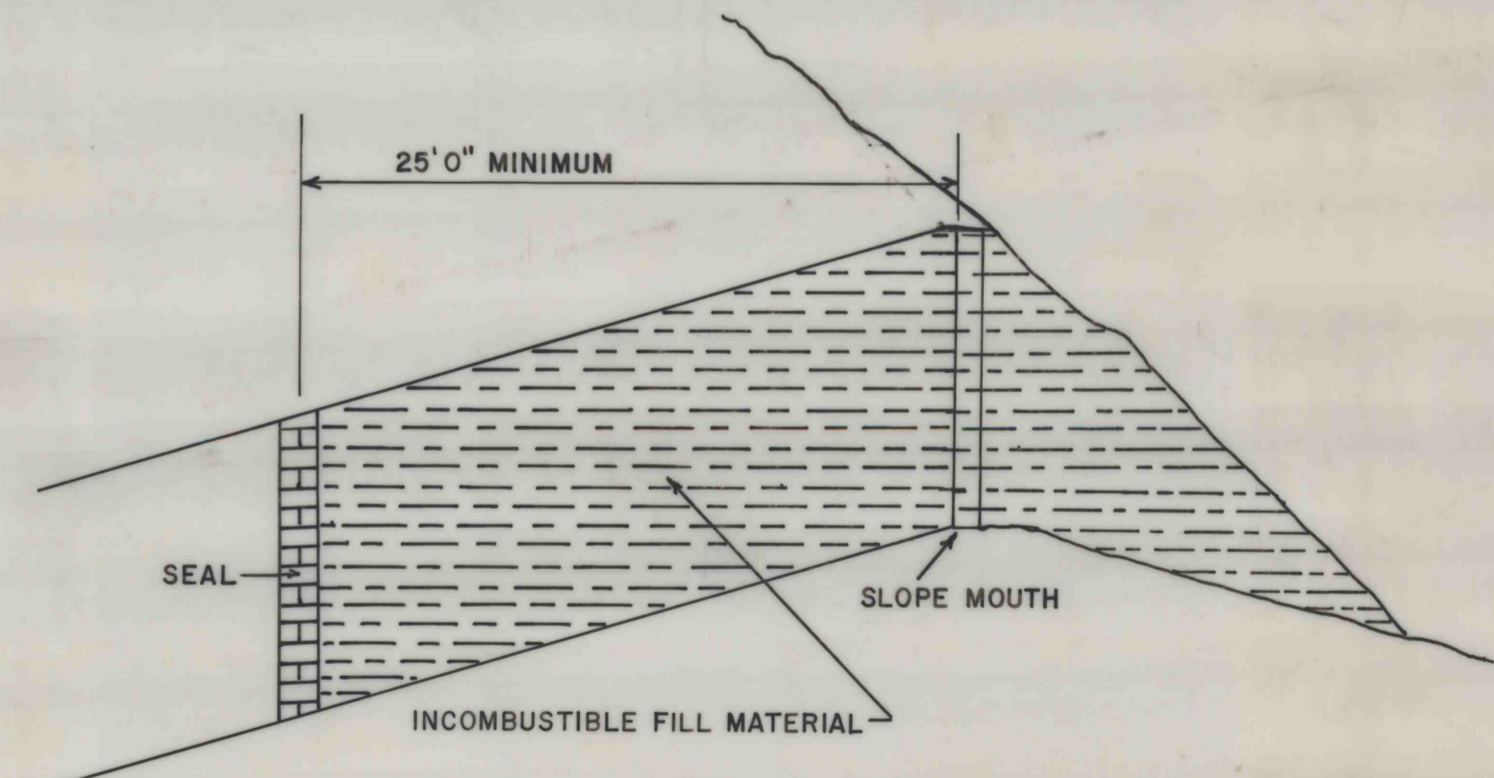


BOREHOLES
EXPLORATION
POWER
DRAINAGE
METHANE
VENTILATION



DRIFT

SECTION VIEW
GENERAL LOCATION OF SEALS



SLOPES

BARNES & TUCKER COMPANY
TYPICAL SEALING PROCEDURES
EXHIBIT II-C-1
NO SCALE
JUNE, 1984

4211a
Q15