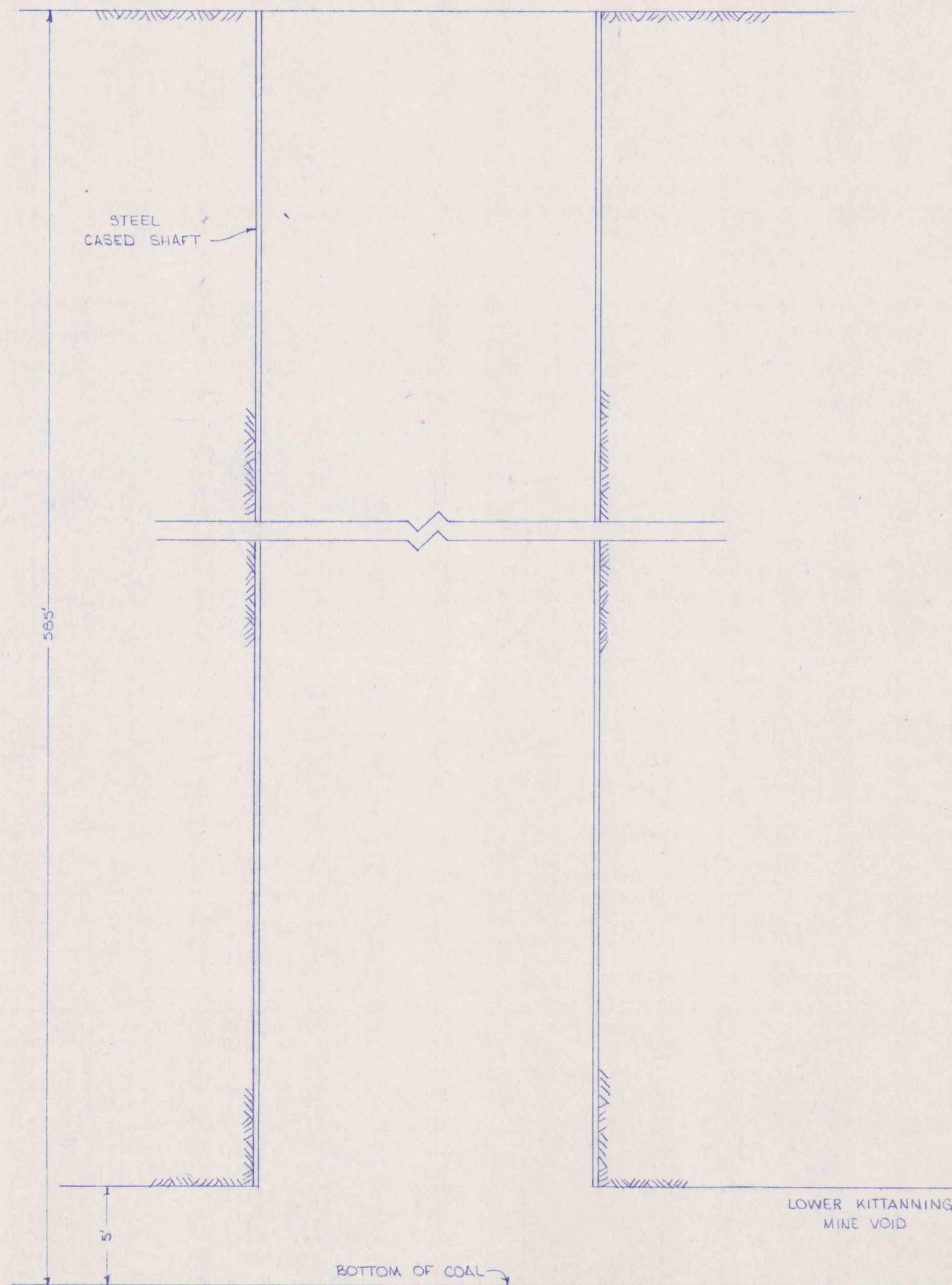
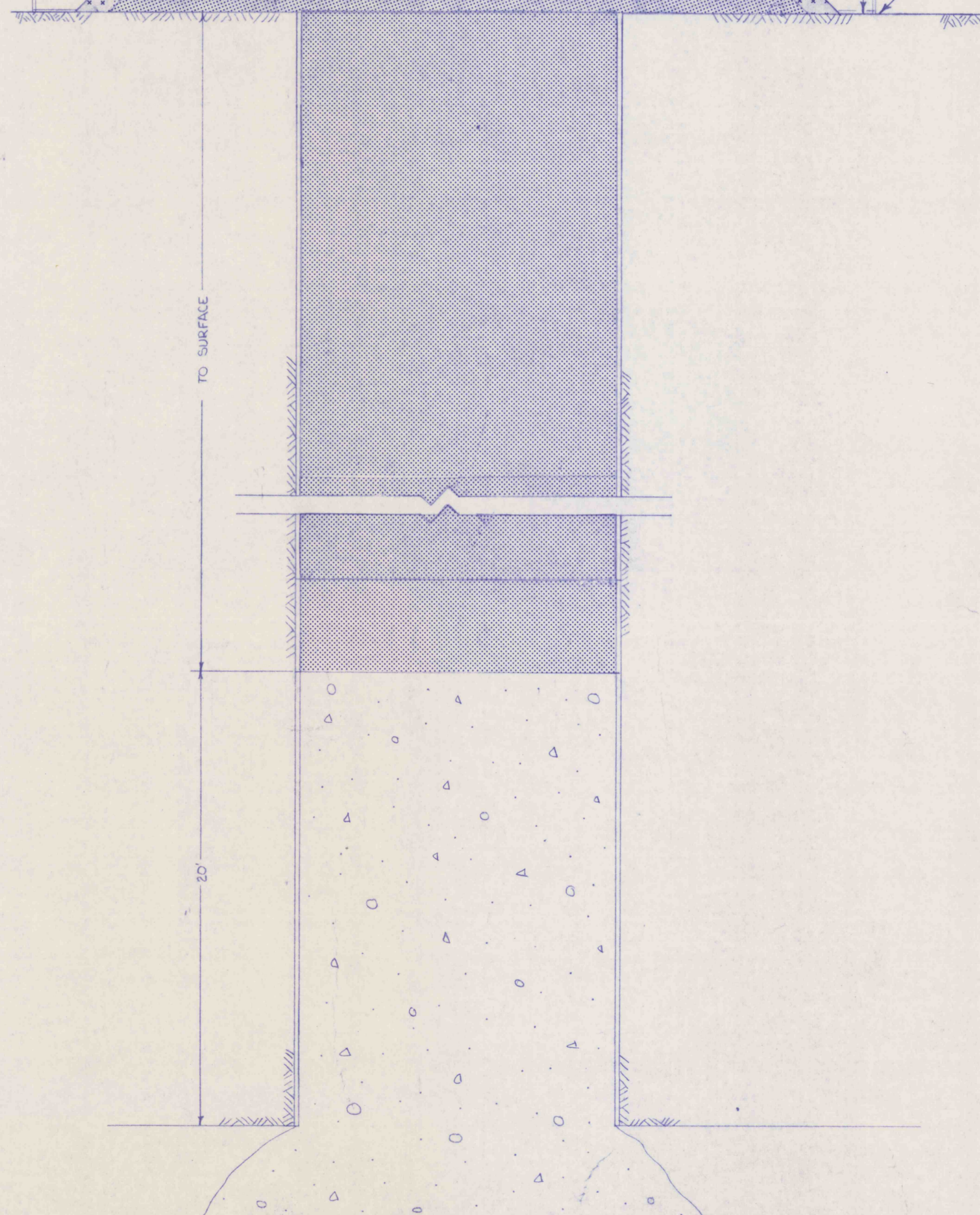
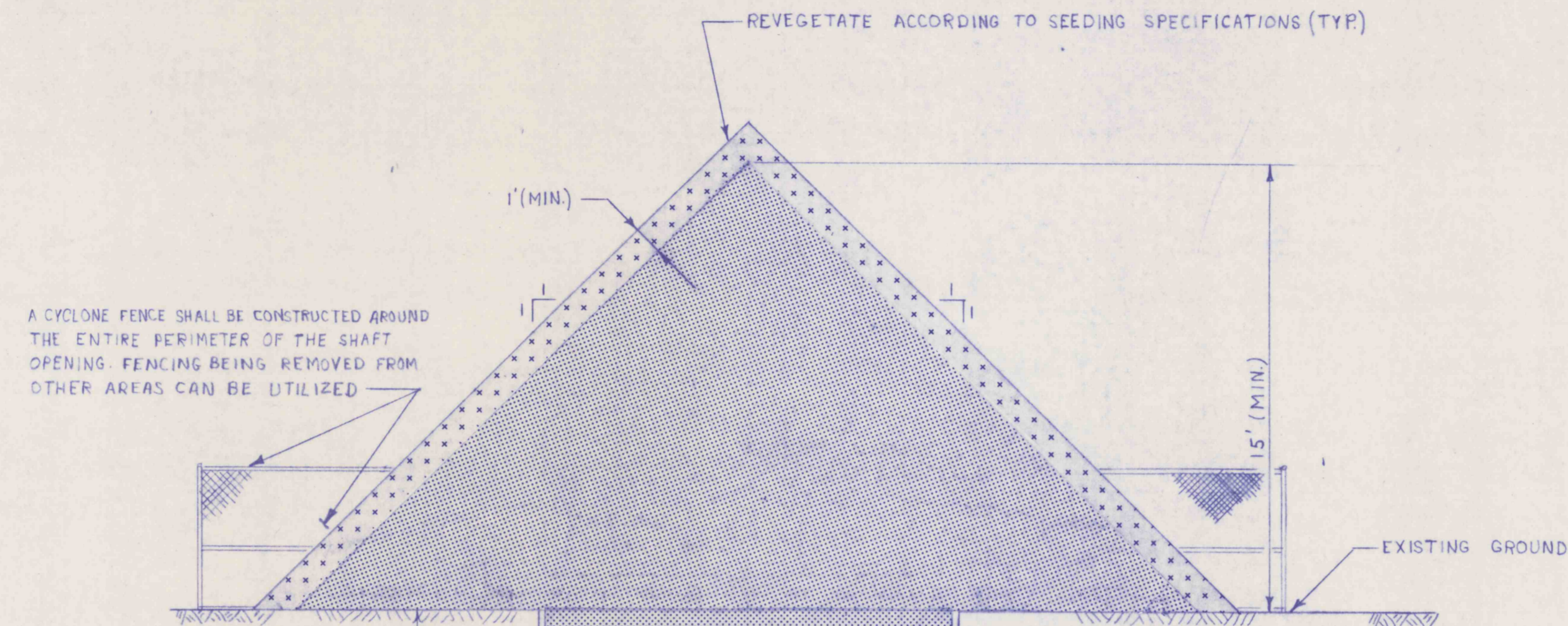


NOTE: AS BUILT DRAWING NOT AVAILABLE.



AS-BUILT CONSTRUCTION SECTION



PROPOSED BACKFILL SECTION

**TYPICAL SHAFT BACKFILLING INSTRUCTIONS**

1. PLACE ALL SEDIMENTATION AND EROSION CONTROL AS NEEDED AND SPECIFIED.
2. CLEAR ALL OBSTACLES IN SHAFTS THAT WOULD HINDER PLACEMENT OF GROUTED GRAVEL FILL OR INERT FILL BY BRIDGING OFF OR CAUSING VOIDS IN FILL MATERIAL.
3. A CONVEYING SYSTEM SHALL BE UTILIZED DURING THE GROUTED GRAVEL AND BACKFILL PLACEMENT OPERATIONS, IN ORDER TO MAINTAIN A SAFE STANDOFF DISTANCE.
4. PLACE GROUTED GRAVEL FILL TO A MINIMUM OF 20' ABOVE THE COAL SEAM(S) AS PER TECHNICAL SPECIFICATIONS AND DETAILS ON THIS SHEET.
5. UNIFORMLY PLACE INERT FILL IN THE SHAFTS TO THE SURFACE.
6. REMOVE ALL CONCRETE COPING TO EXISTING GRADE.
7. MOUND INERT FILL OVER THE SHAFT OPENING. 0.5' PER 10' DEPTH OF SHAFT BACKFILLED TO A MAXIMUM DEPTH OF 15' WITH APPROPRIATE SLOPE OF FILL AS DETAILED ON THIS SHEET.
8. PLACE 1' MINIMUM OF TOPSOIL OVER MOUNDED INERT FILL.
9. REVEGETATE ACCORDING TO TECHNICAL SPECIFICATIONS.

**LEGEND**

- INERT FILL
- GROUTED GRAVEL
- TOPSOIL

**RECEIVED**  
SEP 29 1989  
Dept. of Environmental Resources  
McMurry District Office

**NOTE:**

1. All Pilot Hole/Water Ring Drain Holes developed from the surface will be filled completely with concrete.
2. Grouted gravel particle sizes 1" - 12".

APPROVED:	REVISIONS	ISSUED	NO 3 AIRSHAFT SEAL DETAILS	SCALE NO SCALE
	BIRD NO. 3 MINE BIRD COAL COMPANY SITUATE STONY CREEK TOWNSHIP, CAMBRIA CO., PA. CONEMAUGH TWP., SOMERSET CO., PA.			SHEET NO. <b>35</b>
FILE	JOB 86003	GWIN, DOBSON & FOREMAN, INC. CONSULTING ENGINEERS ALTOONA, PENNSYLVANIA		
	DRAWN BY: BLK		CHECKED:	