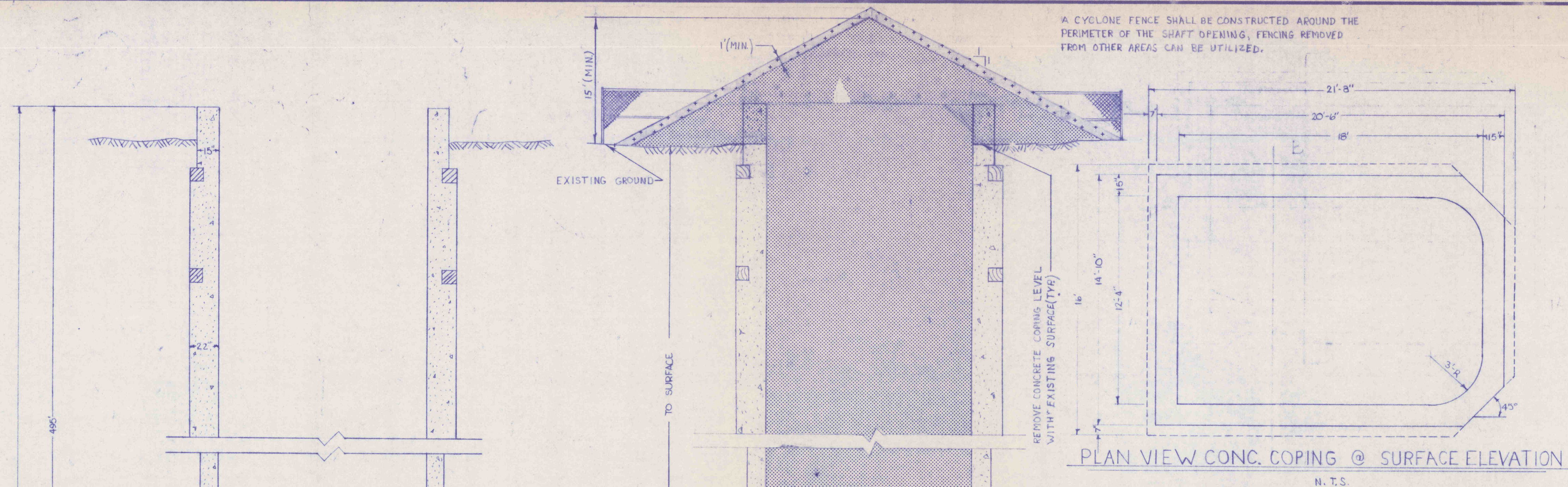
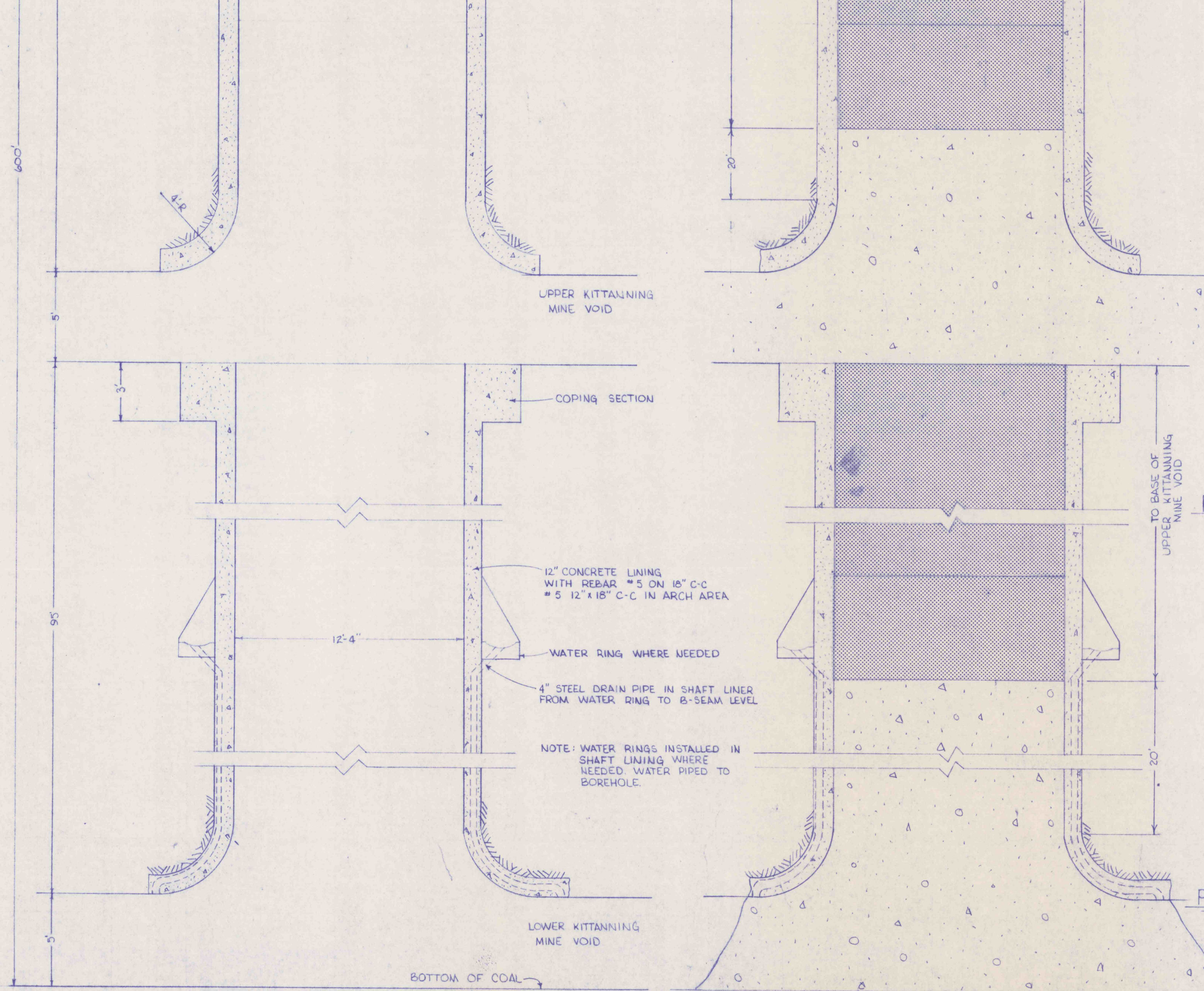


A CYCLONE FENCE SHALL BE CONSTRUCTED AROUND THE PERIMETER OF THE SHAFT OPENING, FENCING REMOVED FROM OTHER AREAS CAN BE UTILIZED.

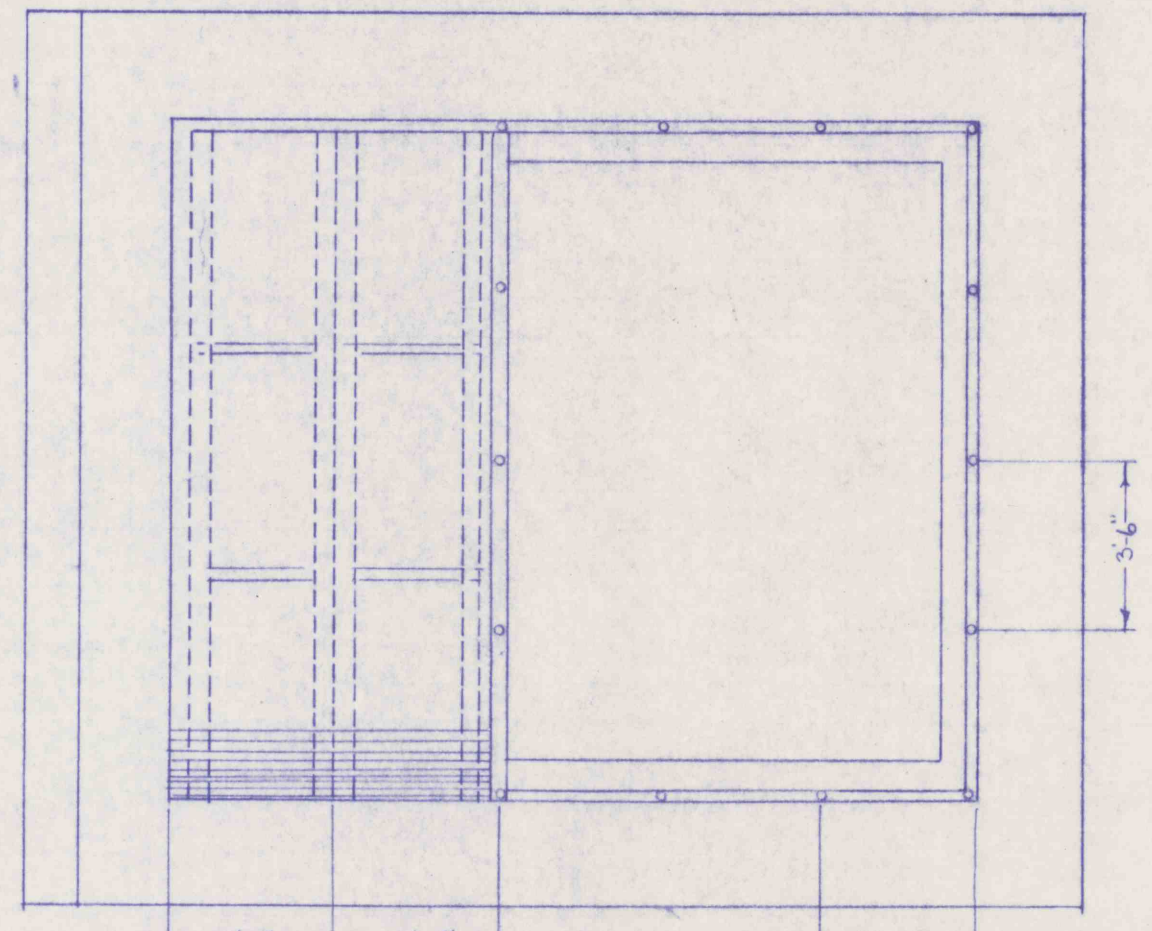


PLAN VIEW CONC. COPING @ SURFACE ELEVATION
N.T.S.

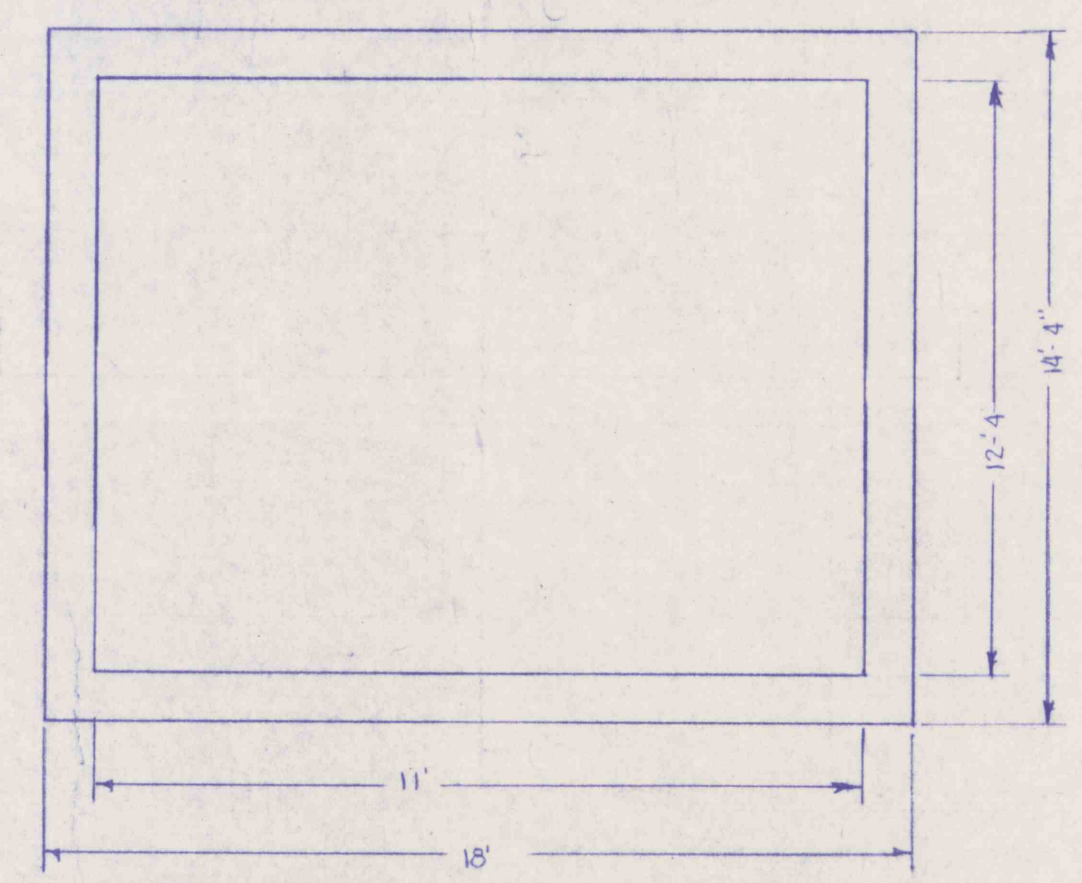


AS-BUILT CONSTRUCTION SECTION

PROPOSED BACKFILL SECTION



PLAN VIEW CONC COPING @ C' COAL SEAM ELEVATION
N.T.S.



PLAN VIEW CONC SHAFT LINING ABOVE B SEAM COAL
N.T.S.

TYPICAL SHAFT BACKFILLING INSTRUCTIONS

1. PLACE ALL SEDIMENTATION AND EROSION CONTROL AS NEEDED AND SPECIFIED.
2. CLEAR ALL OBSTACLES IN SHAFTS THAT WOULD HINDER PLACEMENT OF GROUTED GRAVEL FILL OR INERT FILL BY BRIDGING OFF OR CAUSING VOIDS IN FILL MATERIAL.
3. A CONVEYING SYSTEM SHALL BE UTILIZED DURING THE GROUTED GRAVEL AND BACKFILL PLACEMENT OPERATIONS, IN ORDER TO MAINTAIN A SAFE STANDOFF DISTANCE.
4. PLACE GROUTED GRAVEL FILL TO A MINIMUM OF 20' ABOVE THE COAL SEAM(S) AS PER TECHNICAL SPECIFICATIONS AND DETAILS ON THIS SHEET.
5. UNIFORMLY PLACE INERT FILL IN THE SHAFTS TO THE SURFACE.
6. REMOVE ALL CONCRETE COPING TO EXISTING GRADE.
7. MOUND INERT FILL OVER THE SHAFT OPENING. 0.5' PER 10' DEPTH OF SHAFT BACKFILLED TO A MAXIMUM DEPTH OF 15' WITH APPROPRIATE SLOPE OF FILL AS DETAILED ON THIS SHEET.
8. PLACE 1' MINIMUM OF TOPSOIL OVER MOUNDED INERT FILL.
9. REVEGETATE ACCORDING TO TECHNICAL SPECIFICATIONS.

LEGEND

- TOPSOIL
- INERT FILL
- GROUTED GRAVEL

NOTE:

1. All Pilot Hole/Water Ring Drain Holes developed from the surface will be filled completely with concrete.
2. Grouted gravel particle sizes 1" - 12".

RECEIVED
SEP 29 1989
Dept. of Environmental Resources
McMurray District Office

REVISIONS	ISSUED	WEBER AIRSHAFT SEAL DETAILS	SCALE NO SCALE
		BIRD NO. 2 & 3 MINE BIRD COAL COMPANY SITUATE STONY CREEK TOWNSHIP, CAMBRIA CO., PA CONEMAUGH TWP., SOMERSET CO., PA	
APPROVED:	JOB 86003	GWIN, DOBSON & FOREMAN, INC. CONSULTING ENGINEERS ALTOONA, PENNSYLVANIA	SHEET NO. 37
	FILE	DRAWN BY: BLK CHECKED:	