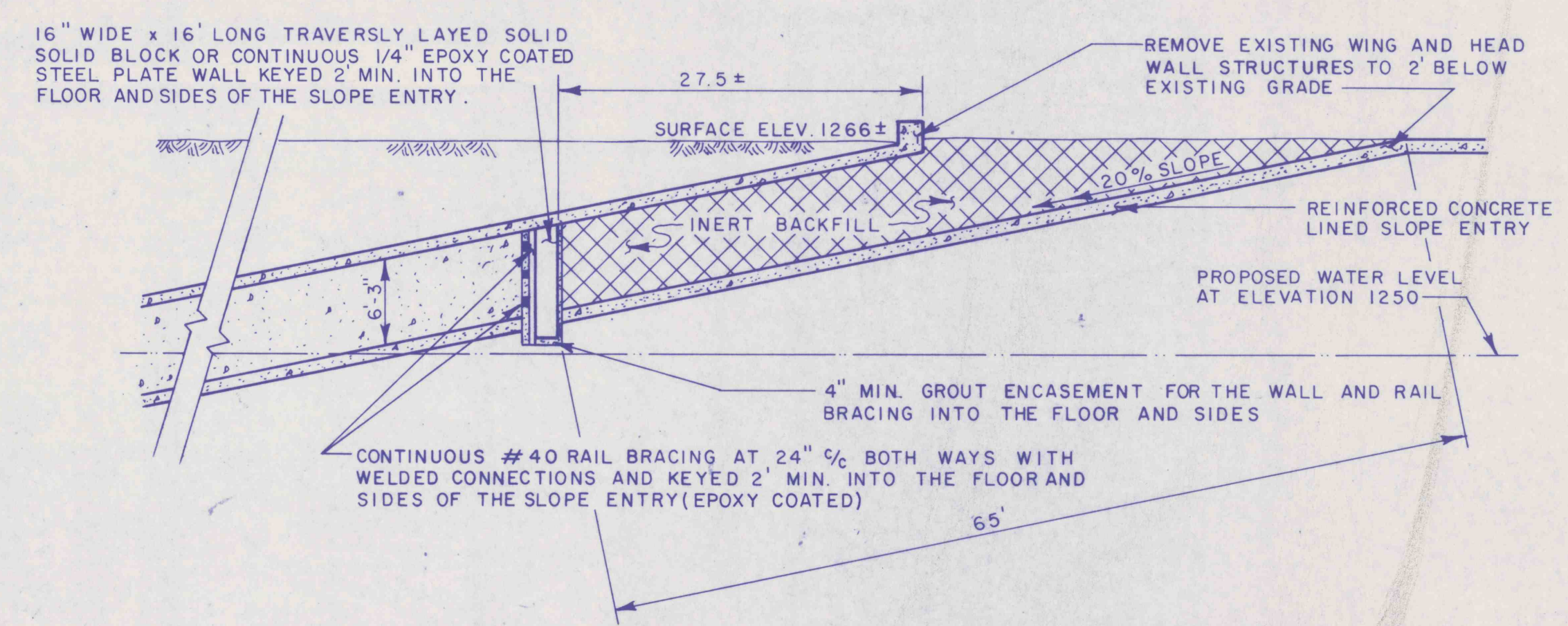


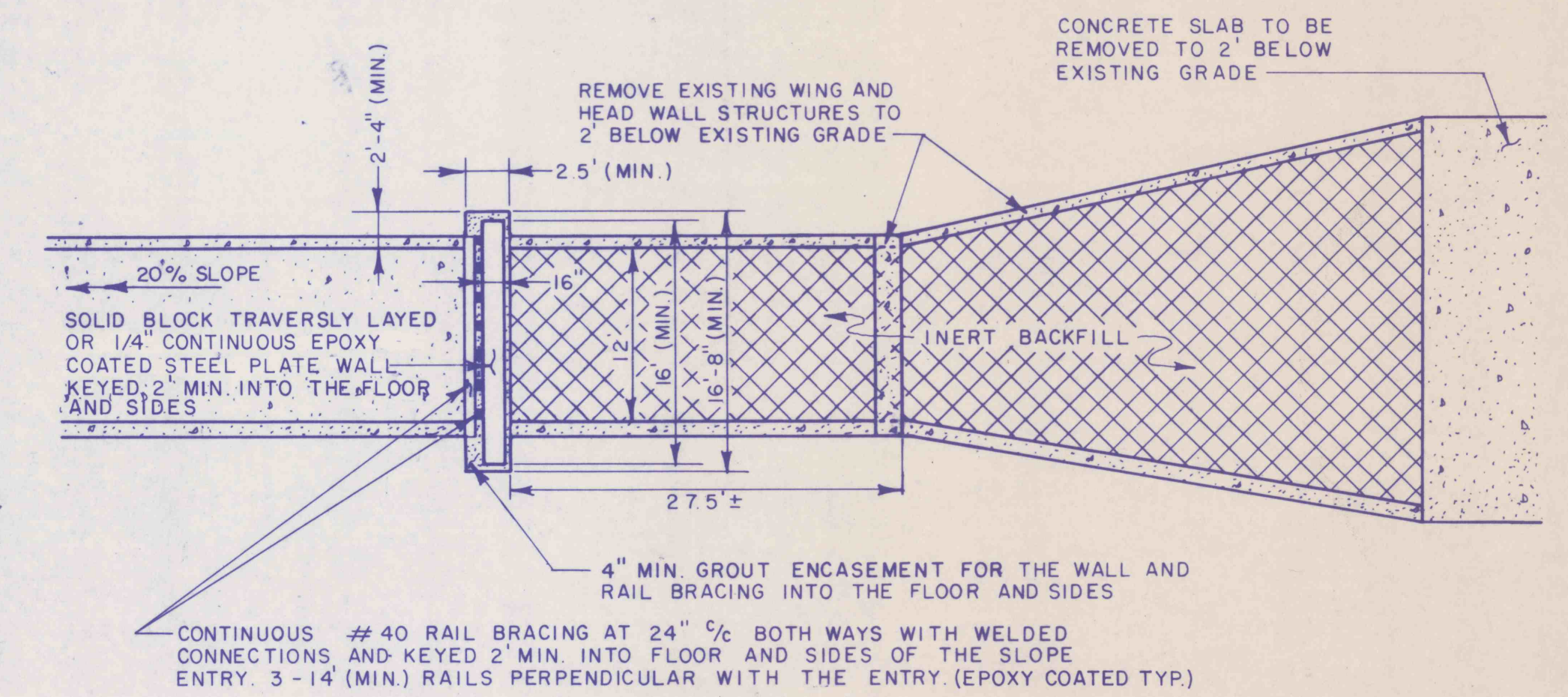
CROSS SECTION J-J'
 SCALE: 1" = 50' VERT.
 1" = 100' HORIZ.

- LEGEND**
- SURFACE
 - COAL
 - MINE VOID
 - BLOCK OR 1/4" STEEL WALL
 - INERT FILL

NOTE:
 SEE SHEETS NO. 7 & 14 FOR LOCATION OF CROSS-SECTION J-J'.



MAIN SLOPE PORTAL ELEVATION VIEW
SEAL AREA NO. 8
 SCALE: 1" = 10'



MAIN SLOPE PORTAL PLAN VIEW
SEAL AREA NO. 8
 SCALE: 1" = 10'

GENERAL INSTRUCTIONS:
SEAL AREA NO. 8 CONSTRUCTION

1. ESTABLISH LOCATION OF SOLID BLOCK BULKHEAD AND KEYWAY CUTS IN THE BOTTOM AND SIDES OF MAIN SLOPE PORTAL AS INDICATED ON THE DETAILS AND DIRECTED BY THE ENGINEER IN THE FIELD.
2. MAKE BOTTOM AND RIB KEY CUTS AS DETAILED ON THIS SHEET.
3. SET RAIL BRACING KEYED 2' MIN. INTO THE FLOOR AND SIDES OF SLOPE ENTRY AS INDICATED ON THE DETAILS.
4. CONSTRUCT 16" THICK, TRAVERSELY LAYED, SOLID BLOCK WALL KEYED 2' MIN. INTO THE FLOOR AND SIDES OF THE SLOPE ENTRY.
5. 4" MIN. GROUT ENCASEMENT FOR THE WALL AND RAIL BRACING IN THE BOTTOM AND RIB KEY CUTS SHALL BE PLACED CONCURRENTLY WITH CONSTRUCTION OF SOLID BLOCK WALL.
6. BACKFILL SLOPE ENTRY WITH INERT FILL FROM WALL TO SLOPE PORTAL OPENING.
7. REMOVE ALL CONCRETE TO 2' BELOW EXISTING GRADE.
8. REGRADE AND REVEGETATE ACCORDING TO TECHNICAL SPECIFICATIONS AND TYPICAL SKETCH OF SURFACE ACCESS SEAL CLAY PLUG WITH FORM ON SHEET NO. 40.

RECEIVED
 SEP 29 1989

Dept. of Environmental Resources
 McMurray District Office

REVISIONS	ISSUED	MAIN FACILITY SLOPE PORTAL SEAL DETAILS	SCALE AS SHOWN
		BIRD NO. 3 MINE BIRD COAL COMPANY SITUATE STONY CREEK TOWNSHIP, CAMBRIA CO., PA. CONEMAUGH TWP. SOMERSET CO., PA.	
APPROVED:	JOB 89013	GWIN, DOBSON & FOREMAN, INC. CONSULTING ENGINEERS ALTOONA PENNSYLVANIA	SHEET NO. 30
	FILE	DRAWN BY: CHECKED:	