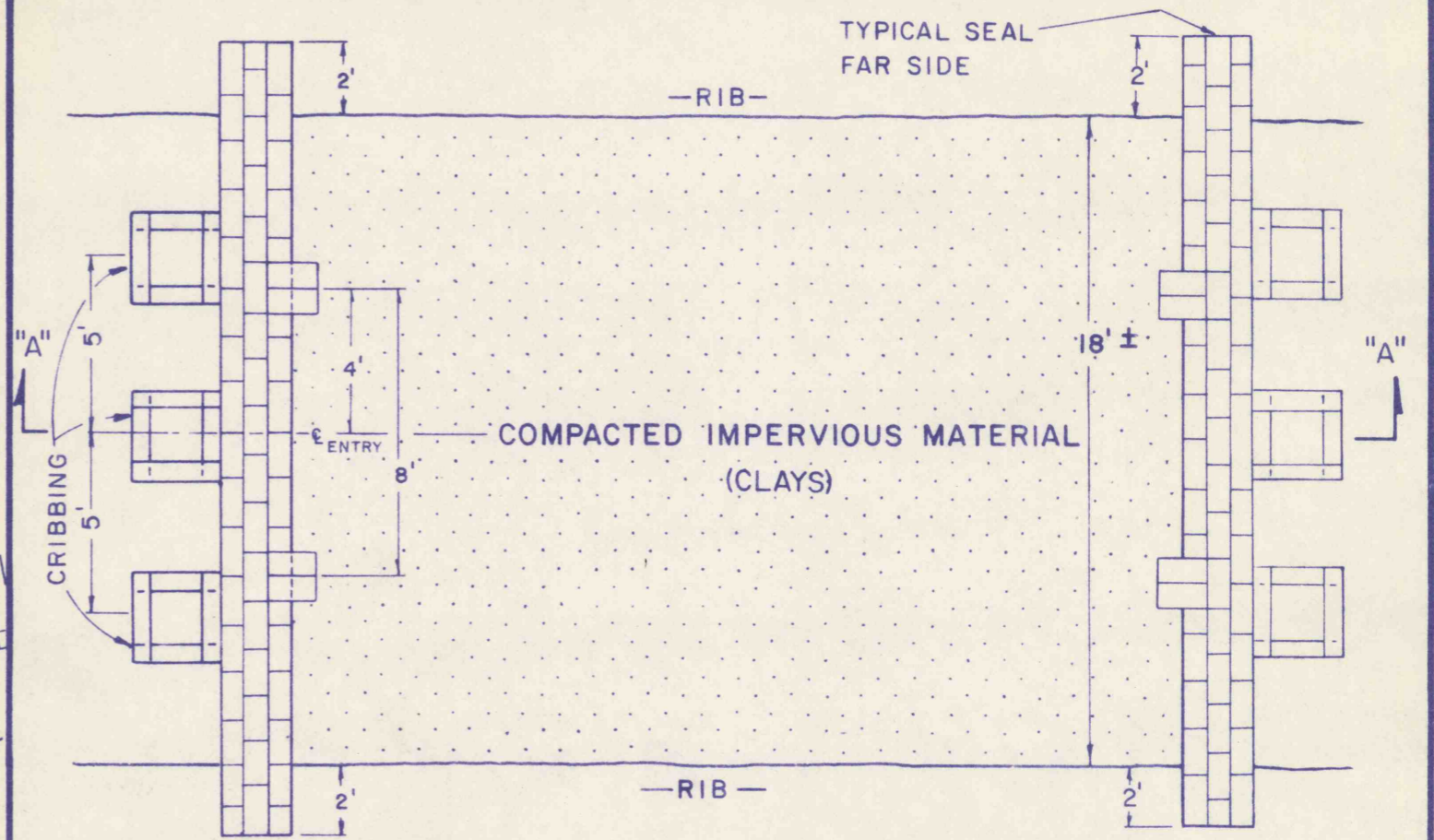


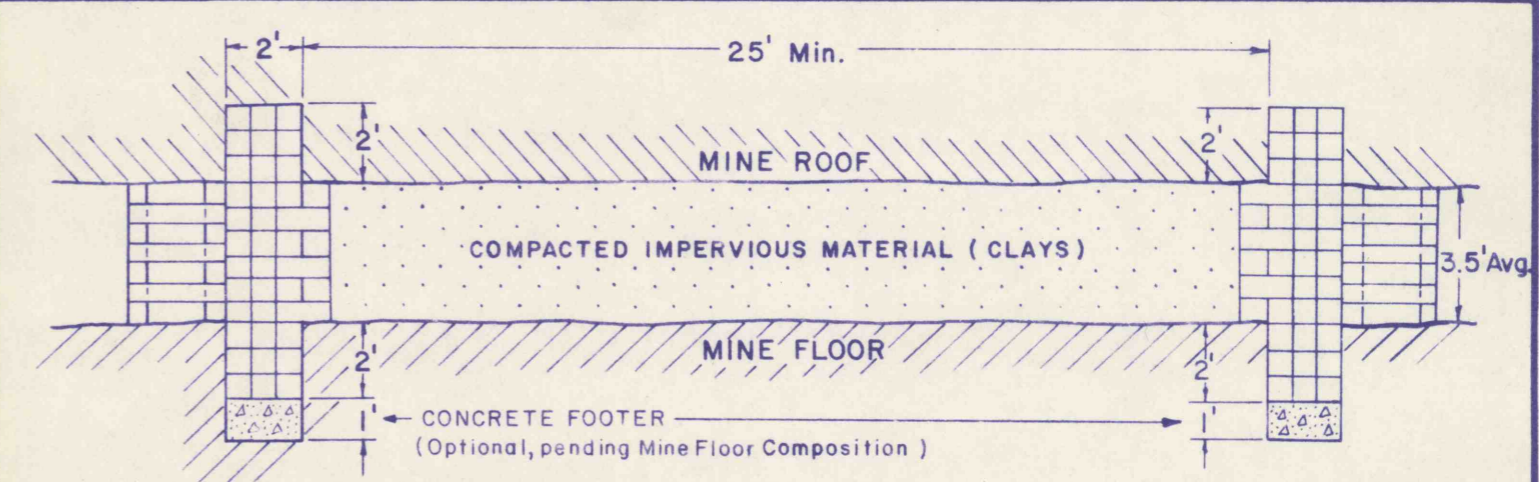
NOTE: CRIBBING TO BE INSTALLED ALONG SEALS TO PREVENT WALLS FROM BEING PUSHED OUT, AND TO PREVENT SUBSIDENCE IN THE IMMEDIATE AREA.

PLAN VIEW OF MINE SEAL FOR ENTRIES 1 & 2



NOTE: CRIBBING TO BE INSTALLED ALONG SEALS TO PREVENT WALLS FROM BEING PUSHED OUT, AND TO PREVENT SUBSIDENCE IN THE IMMEDIATE AREA.

PLAN VIEW OF MINE SEAL FOR ENTRIES 3 & 4



3 Rows of Mortared, 8 inch, Solid, Cement Blocks  
Cross-tied for additional strength  
Blocks are inserted into Mine Ribs, Roof and Floor a min. of 2'

CROSS SECTION "A-A" - Typical for ENTRIES 1, 2, 3, & 4

MINE SEAL DESIGN

FOR  
**J & D COAL COMPANY**  
MILLER RUN MINE

2-17-83  
F.P.

SCALE: 1" = 5'

JANUARY 26, 1983

FEB 22 1983