

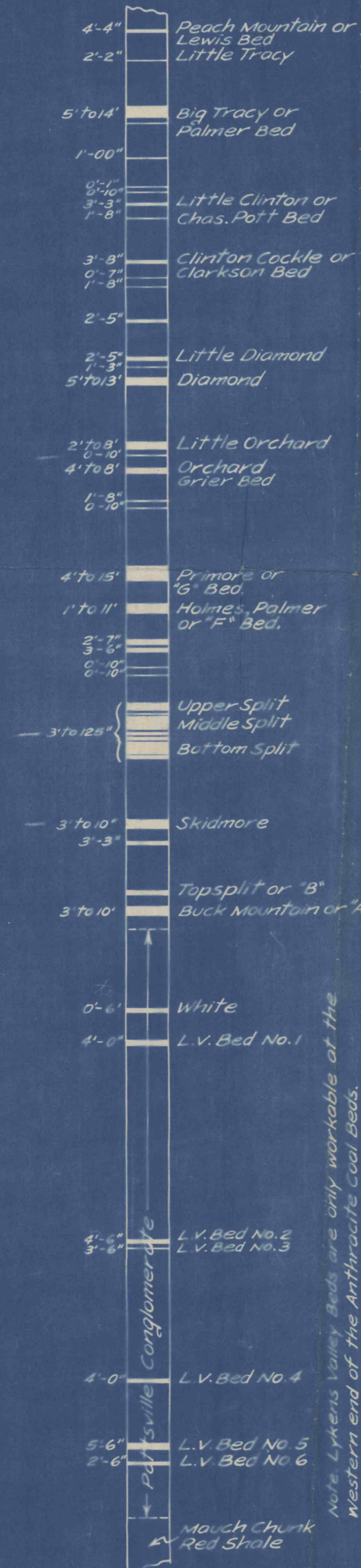
RICHARD MAIZE
SECRETARY OF MINES.
JOSEPH J. WALSH
DEPUTY SECRETARY.
*W. Garfield Thomas
Deputy Secretary*

COMMONWEALTH OF PENNSYLVANIA

DEPARTMENT OF MINES

COMPILED BY WARREN J. DANIEL,
DIRECTOR OF LAND OFFICE.
DRAWN BY JAMES JOYCE.
MARCH 1938.

Approximate Columnar Section,
Anthracite Coal Bed, Southern Field.
Vertical Scale. 1"=200 Feet.

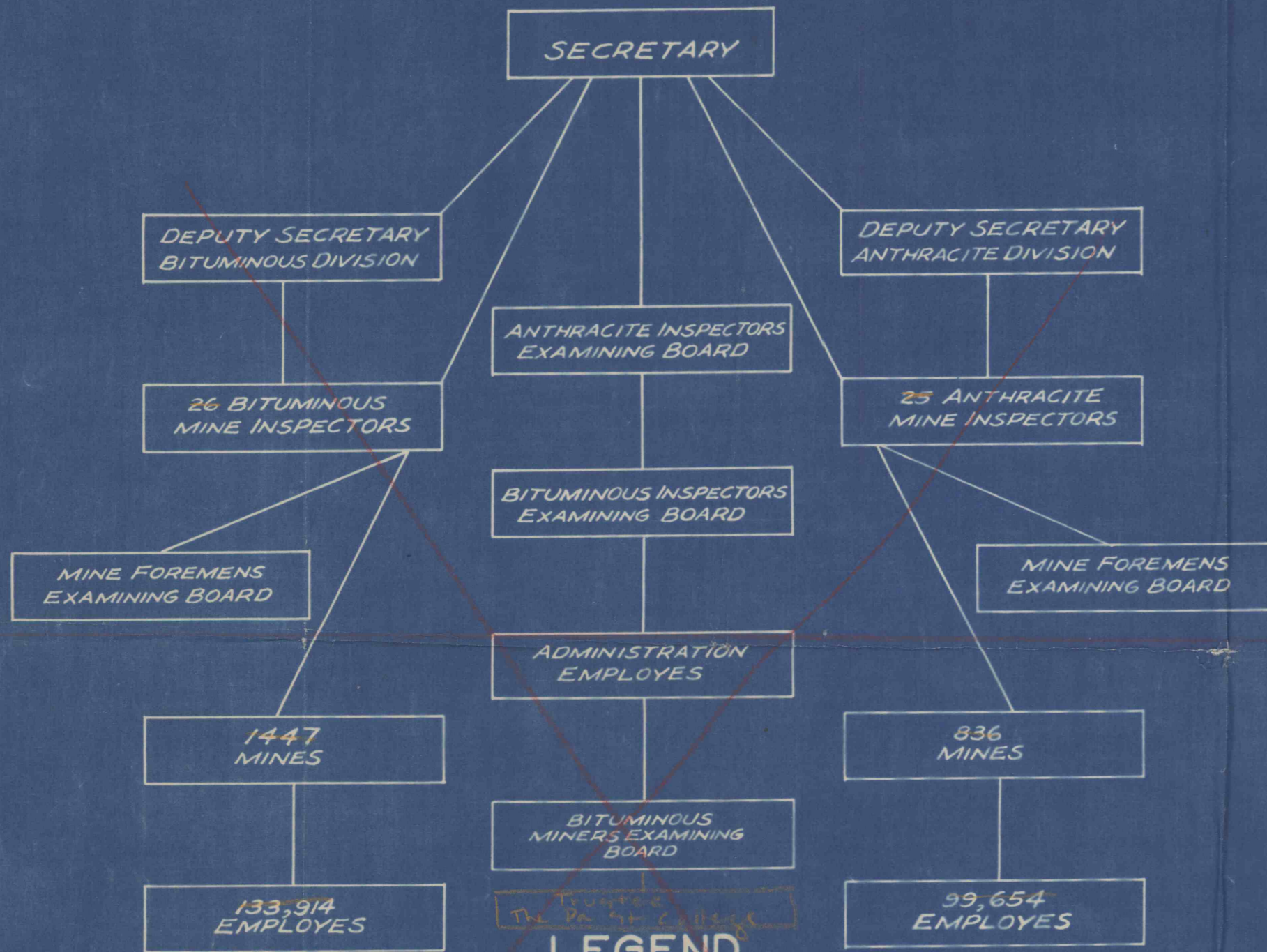


BITUMINOUS REGION

YEAR	NET TONS	EMPLOYES
1880	16,564,440	33,391
1885	23,413,692	44,145
1890	40,884,103	67,383
1895	51,818,112	84,976
1900	79,318,362	108,735
1905	119,361,514	164,941
1910	148,770,858	193,488
1915	157,420,068	187,734
1920	166,929,002	184,168
1925	135,266,612	165,586
1930	123,417,850	133,703
1935	91,140,273	129,350

ANTHRACITE REGION

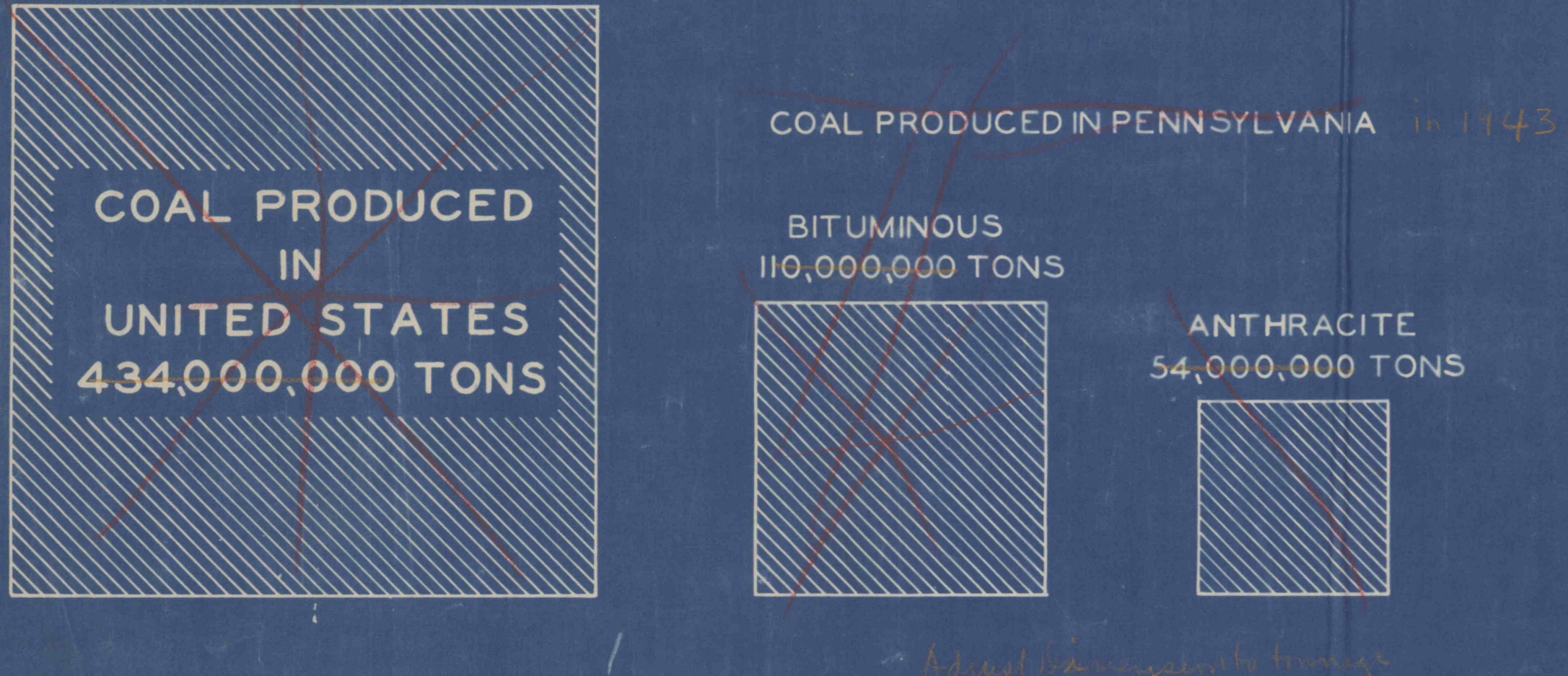
YEAR	NET TONS	EMPLOYES
1880	27,974,532	73,373
1885	38,232,155	100,320
1890	44,986,286	119,919
1895	56,948,756	143,705
1900	57,363,396	143,824
1905	78,647,020	168,254
1910	83,683,994	168,175
1915	89,377,706	177,339
1920	89,636,036	149,117
1925	61,334,145	163,825
1930	68,776,559	151,171
1935	51,359,111	100,539



LEGEND

- ANTHRACITE COAL FIELDS.
- SEMI ANTHRACITE COAL FIELDS.
- BITUMINOUS COAL FIELDS.

COMPILED FROM 1936 DATA.



COMPARED WITH THE COAL MINED THE GRAPH SHOWS THE AMOUNT OF GAS, AIR & WATER THAT IS HANDLED IN THE COURSE OF A YEAR IN THE MINES OF PENNSYLVANIA.

- ANTHRACITE 54,000,000 TONS
- BITUMINOUS 110,000,000 TONS
- METHANE 12,000,000 TONS AT ITS HIGHEST EXPLOSIVE POINT.
- AIR 1,800,000,000 TONS
- WATER 2,600,000,000 TONS

Note: Lukens Valley Beds are only workable at the western end of the Anthracite Coal Beds.

Adjusted bituminous to anthracite

TITLES