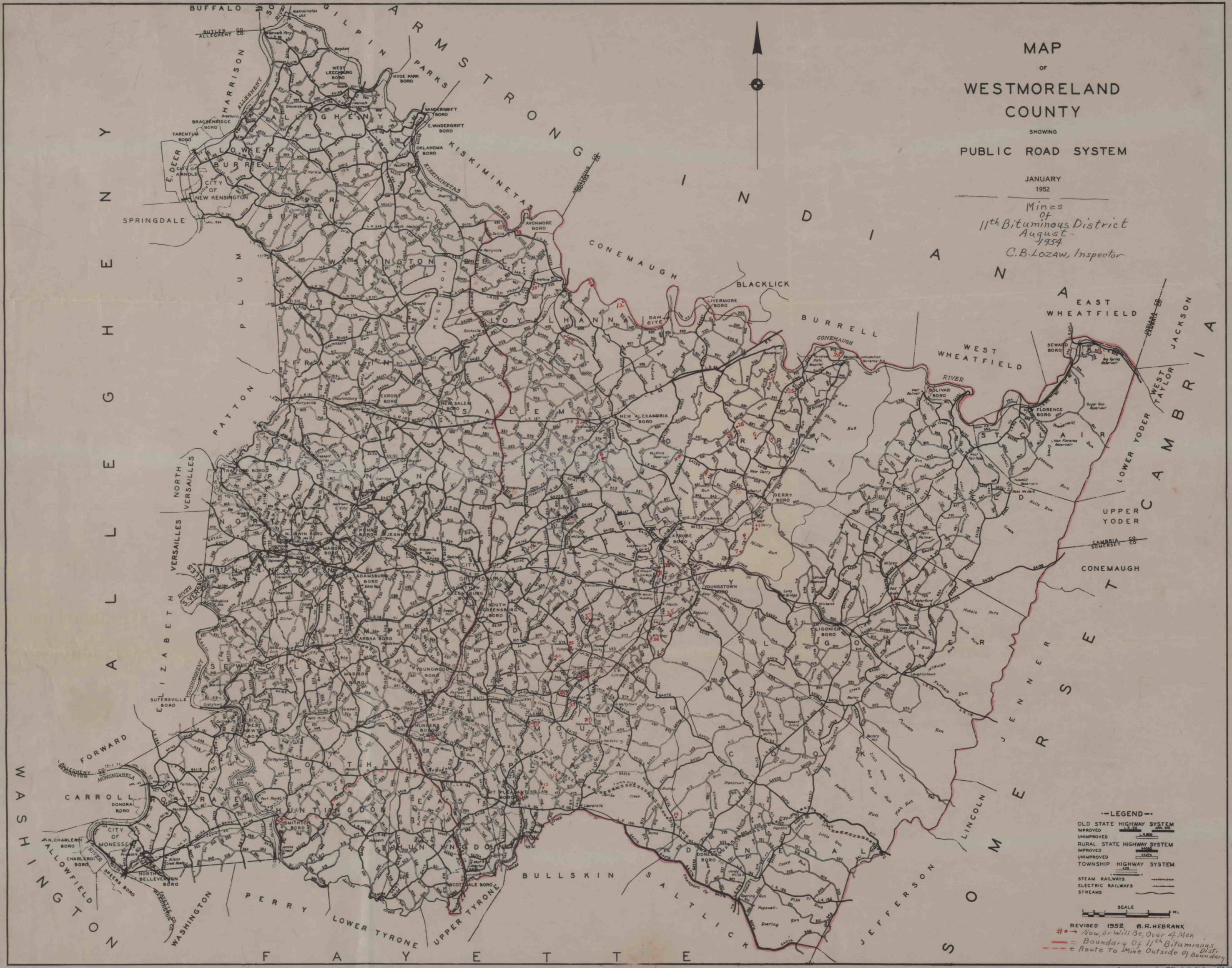


MAP  
OF  
WESTMORELAND COUNTY  
SHOWING  
PUBLIC ROAD SYSTEM

JANUARY  
1952

Mines  
of  
11th Bituminous District  
August -  
1954  
C.B. LOZAW, Inspector



—LEGEND—  
 OLD STATE HIGHWAY SYSTEM  
 IMPROVED   
 UNIMPROVED   
 RURAL STATE HIGHWAY SYSTEM  
 IMPROVED   
 UNIMPROVED   
 TOWNSHIP HIGHWAY SYSTEM  
  
 STEAM RAILWAYS   
 ELECTRIC RAILWAYS   
 STREAMS

SCALE 1" = 1 MI.

REVISED 1952 B.R. HEBRANK  
 # → Now, or Will Be, Over 4 Men  
 --- Boundary of 11th Bituminous Dist.  
 - - - Route to Mine Outside of Boundary

August 13, 1954 CBL