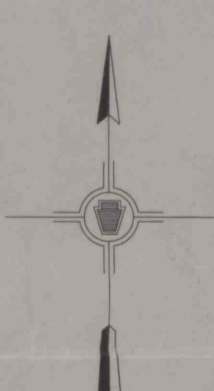
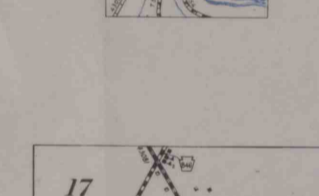
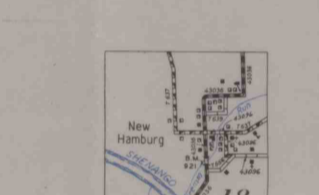
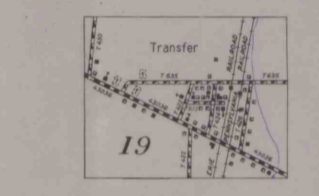
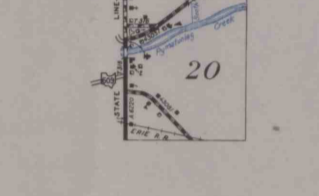
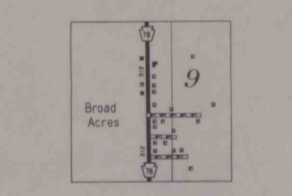
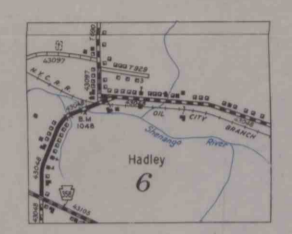
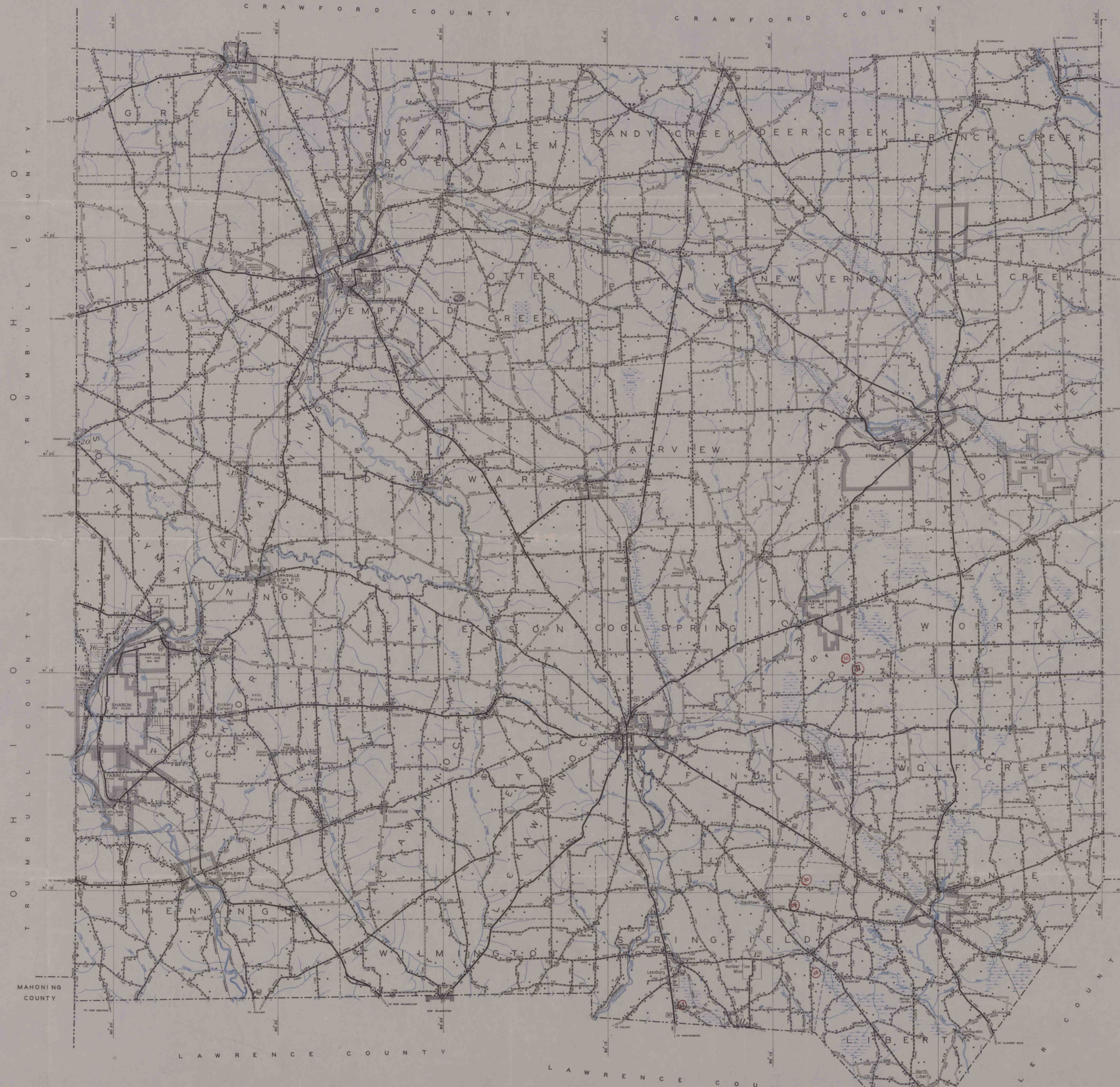


LEGEND

- AIRWAYS**
 - ARMY WAY OR MARINE CORPS FIELD
 - CIVIL AIRWAYS
 - COMMERCIAL OR MUNICIPAL FIELD
 - MARKED AIRFIELD
 - APRILANE LANDING FIELD
 - BEACH LIGHT
 - LANDMARK LIGHT BEACON
 - IMPORT HOUSING FACILITIES
- CITY OR VILLAGE CENTERS**
 - STATE CAPITAL
 - COUNTY SEAT
 - OTHER CITIES AND VILLAGES
 - INCORPORATED CITIES OR BORO
 - UNINCORPORATED URBAN CONCENTR
- MISCELLANEOUS MAP FEATURES-NATURAL FEATURES**
 - ARIAL
 - FORT, ARMY CAMP OR BARRACKS
 - ARMY WAREHOUSE
 - POSSIBLE BRIDGE
 - TRANSMISSION STATION
 - BENCH MARK
 - LATITUDE AND LONGITUDE LINES
 - MONUMENT
 - STATE PARK, RECREATION AREA, HISTORIC SITE
 - POINTS BETWEEN WHICH DISTANCES ARE MEASURED
 - PROMINENT ELEVATION WITH NAME
 - SEA OF DESERTION
 - PREHISTORIC INDIAN RUN
- RAILROADS**
 - NARROW GAUGE RAILROAD
 - ELECTRIC INTERURBAN OR SUBURBAN RAILROAD
 - RAILROAD-SERVICE ABANDONED TRACK RETAINED
 - RAILROAD STATION
 - RAILROAD CROSSING
 - RAILROAD ABOVE
 - RAILROAD BELOW
 - BRIDGE, TUNNEL
 - STANDARD GAUGE RAILROAD IN TRENCH OR TUNNEL
 - NARROW GAUGE RAILROAD IN TRENCH OR TUNNEL
 - ELECTRIC RAILROAD
- NAVIGATION AND DRAINAGE**
 - DAMP AND BRIDGE LINES ON NATURAL STREAMS
 - BOAT PIER OR LANDING
 - FREE FERRY
 - TOLL FERRY
 - NATURAL FRESH
 - HEAD OF NAVIGATION
 - HEAD OF NAVIGATION (RETIRED)
 - CANAL
 - ABANDONED CANAL
 - DAM WITH ROAD AND LOCK
 - DAM WITH LOCK
 - DAM WITH LOCK AND LOCK
 - LOCK-CANAL
 - NARROW STREAM
 - WIDE STREAM
 - MARSH OR SWAMP LAND
 - RESERVOIR, POND OR LAKE
 - RESERVOIR WITH DAM
 - NAVIGABLE STREAM
 - NARROW STREAM INTERMITTENT
- BOUNDARIES**
 - STATE LINE
 - COUNTY LINE
 - TOWNSHIP LINE
 - CORPORATE LINE
 - UNINCORPORATED CONCEPT LINE
 - ENLARGEMENT INSET LINE
 - STATE GAME RESERVE LINE
 - STATE GAME LAND LINE
 - STATE FOREST LAND LINE
 - OTHER STATE OR FEDERAL PUBLIC LAND LINE
- ROADS AND ROADWAY FEATURES**
 - FEDERAL AID HIGHWAY SYSTEM
 - FEDERAL AID SECONDARY HIGHWAY SYSTEM
 - END OF FEDERAL AID DESIGNATED ROUTE
 - STATE ROAD
 - TRAFFIC CIRCLE
 - TRAFFIC ROUTE NUMBER
 - PENNSYLVANIA TRAFFIC ROUTE NUMBER
 - PENNSYLVANIA LEGISLATIVE ROUTE NOTE
 - ROAD NOT THE LEGAL RESPONSIBILITY OF THE STATE OR ITS MAJOR SUBDIVISIONS
 - SIDE ROADS AND STREETS IN UNINCORPORATED URBAN CONCENTRATIONS AND EXTENSIVE LOCAL ROADS WITHIN MUNICIPALITIES
 - IMPROVED ROAD
 - GRADED AND DRAINAGE ROAD
 - GRAVEL OR STONE ROAD
 - BITUMINOUS ROAD
 - CONCRETE OR BRICK ROAD
- ROAD UNITS, BELL LINES, ETC.**
 - FAIRLY UNIT
 - HOME OF GROUPS OF DWELLINGS
 - CONCRETE DWELLING AND BUSINESS
 - TENANT HOUSE
 - SEASONAL OR SUMMER COLONY DWELLING
 - SEASONAL DWELLING
 - HOTEL OR INN
 - CHURCH OR OTHER RELIGIOUS INSTITUTION
 - FRESH AIR FARM OR REST HOME
 - CONVENT
 - CHURCH WITH CEMETERY ADJACENT
 - TOLL HOUSE
 - INDUSTRIAL
 - STORE OR SMALL BUSINESS ESTABLISHMENT
 - FACTORY OR INDUSTRIAL PLANT
 - SAMMILL
 - WATER POWERED MILL
 - MINE, SHAFT OR DRIFT
 - OIL OR GAS WELL
 - OIL TANK
 - LAND TANK
 - FILLING STATION
 - PUMPING STATION
 - STOCK YARD OR LOADING PEN
 - GRAVEL PIT
 - QUARRY
 - WAREHOUSE-GENERAL
 - MILK OR CREAM
 - GREENHOUSE
 - MURPHY
- EDUCATIONAL AND CORRECTIONAL INSTITUTIONS**
 - SCHOOLHOUSE
 - UNIVERSITY OR LARGE SCHOOL
 - OTHER EDUCATIONAL INSTITUTIONS
 - PUBLIC LIBRARY
 - MEADON
 - TOWN HALL, GRANGE OR COMMUNITY HALL
 - ZOOLOGICAL GARDEN
 - CORRECTIONAL INSTITUTION
 - COUNTY FARM
 - COUNTY PRISON FARM
- CONSERVATION OR RECREATION**
 - MARSH
 - PARK
 - HOME GROUND
 - PLAYGROUND, ATHLETIC FIELD, ETC.
 - BATHING BEACH OR SWIMMING POOL
 - SCENIC SITE
 - CAMP
 - TOURIST CAMP
 - FOREST RANGER STATION
 - RANGER STATION
 - ONIAN CONSERVATION CORPS CAMP
 - BIRD SANCTUARY
 - OBSERVATION OR LOOKOUT TOWER
 - PROMINENT TOWER AND LOOKOUT TOWER
 - COAST GUARD STATION
 - GOLF COURSE OR COUNTRY CLUB
 - FARM GROUND, RACE COURSE, SPEEDWAY
 - GAZE BOOSE OR DATE HOUSE
 - BOING ACADEMY
 - ACCIDENT STATION
- STRUCTURES**
 - HIGHWAY BRIDGE AND TYPE AND SPAN
 - SMALL BRIDGE
 - COVERED BRIDGE
 - DRAMBRIDGE
 - BRIDGE
 - SUSPENSION
 - ARCH
 - TRUSS
 - CANTILEVER BRIDGE
 - DAM WITH ROAD
 - DAM WITHOUT ROAD
 - FORD-PRIMITIVE ROAD
 - FORD-ROAD ESTABLISHED
 - OVERSEAD INDUSTRIAL STRUCTURE
 - LEVEE WITH ROAD
- PUBLIC SERVICE FACILITIES**
 - POST OFFICE
 - WATER SUPPLY STAND PIPE
 - POWER PLANT
 - TRANSFORMATION STATION
 - RAILROAD STATION
 - HIGHWAY GARAGE
 - POLICE STATION
 - FIRE ENGINE HOUSE
 - GARAGE OR RUBBER DUMP
 - FILTER PLANT
 - SEWER DISPOSAL PLANT
 - INCINERATOR
 - NATIONAL PARK GARAGE



GENERAL HIGHWAY MAP
MERCER COUNTY
PENNSYLVANIA

PREPARED BY THE
PENNSYLVANIA DEPARTMENT OF HIGHWAYS
IN COOPERATION WITH THE
FEDERAL WORKS AGENCY
PUBLIC ROADS ADMINISTRATION
DATA OBTAINED FROM
STATE-WIDE HIGHWAY PLANNING SURVEY

