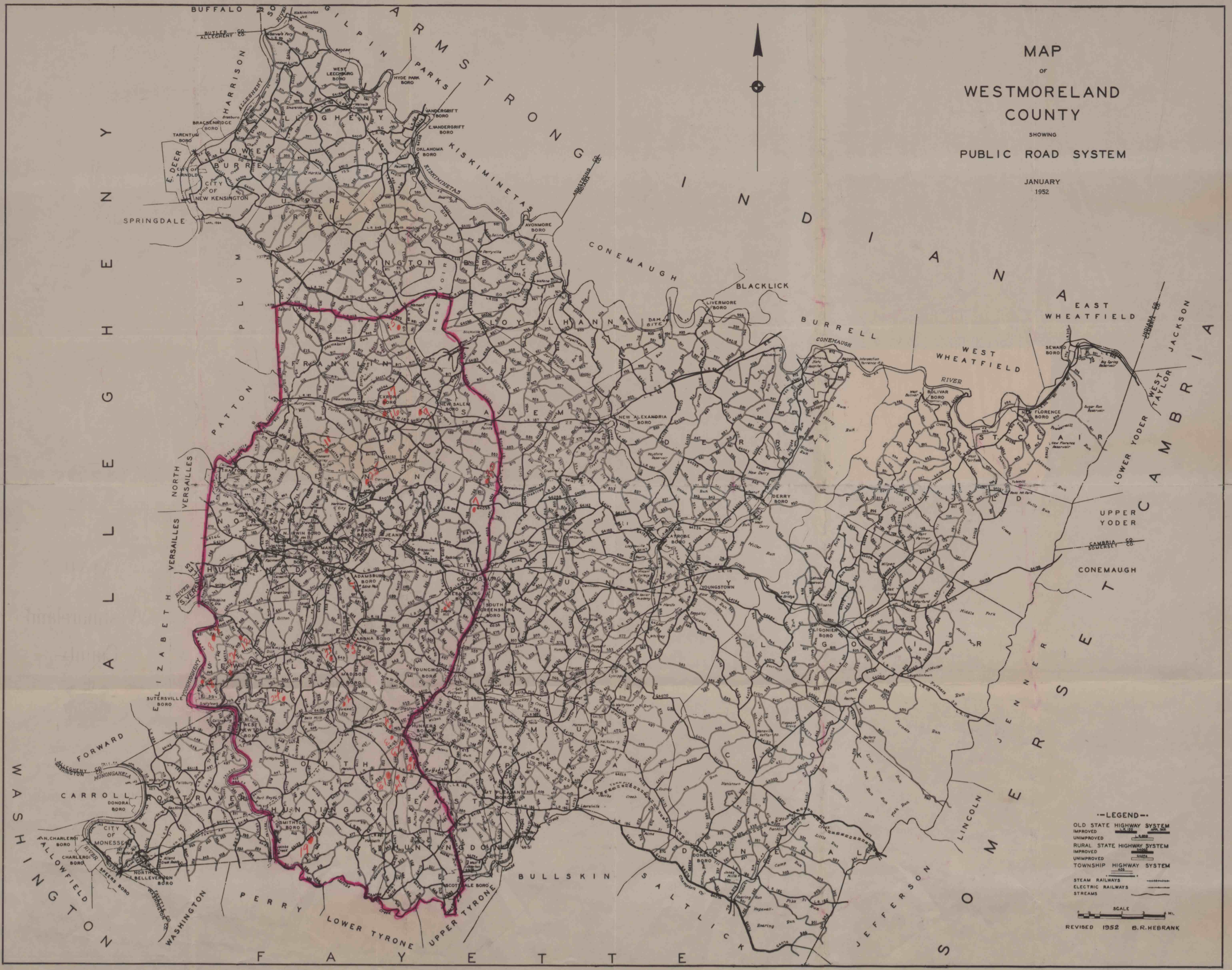


MAP
OF
WESTMORELAND
COUNTY

SHOWING
PUBLIC ROAD SYSTEM

JANUARY
1952



- LEGEND--
- OLD STATE HIGHWAY SYSTEM
 - IMPROVED
 - UNIMPROVED
 - RURAL STATE HIGHWAY SYSTEM
 - IMPROVED
 - UNIMPROVED
 - TOWNSHIP HIGHWAY SYSTEM
 - STEAM RAILWAYS
 - ELECTRIC RAILWAYS
 - STREAMS

SCALE 1 MI.

REVISED 1952 B.R. HEBRANK