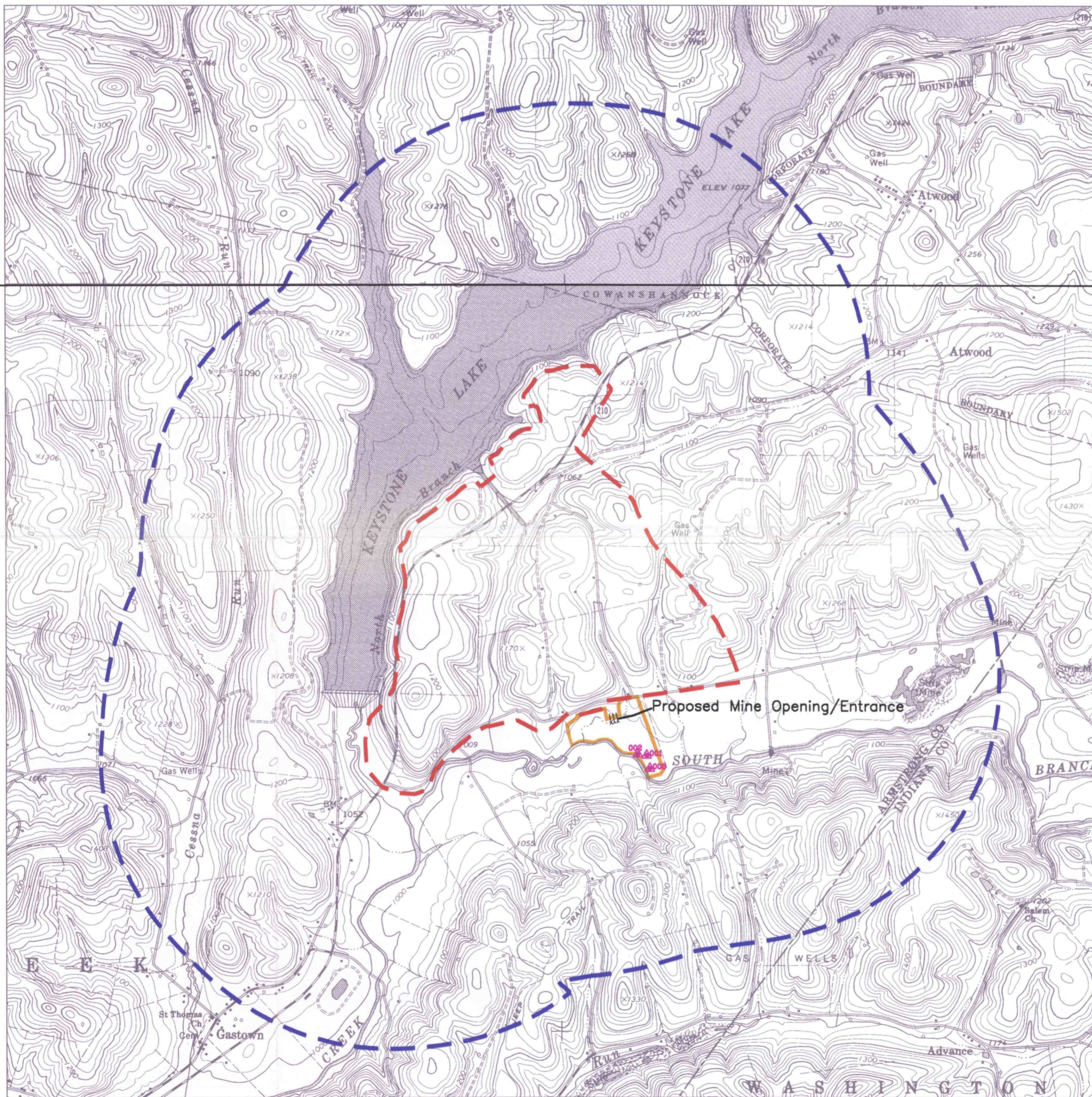


LEGEND

- - - - - PROPOSED PERMIT BOUNDARY
- ▲004 PROPOSED NPDES POINT DISCHARGES
- PROPOSED SURFACE FACILITIES BOUNDARY
- - - - - 1 MILE MAPPING PERIMETER
(WITHIN 1 MILE OF EXISTING & PROPOSED PERMIT BOUNDARY)



Rural Valley Quad
Elderton Quad

Scale: 1" = 2000'

September 2003



EXHIBIT 6.1 LOCATION MAP
Keystone East Mine
Upper Freeport Seam

ROSEBUD MINING COMPANY
Plumcreek Township - Armstrong County