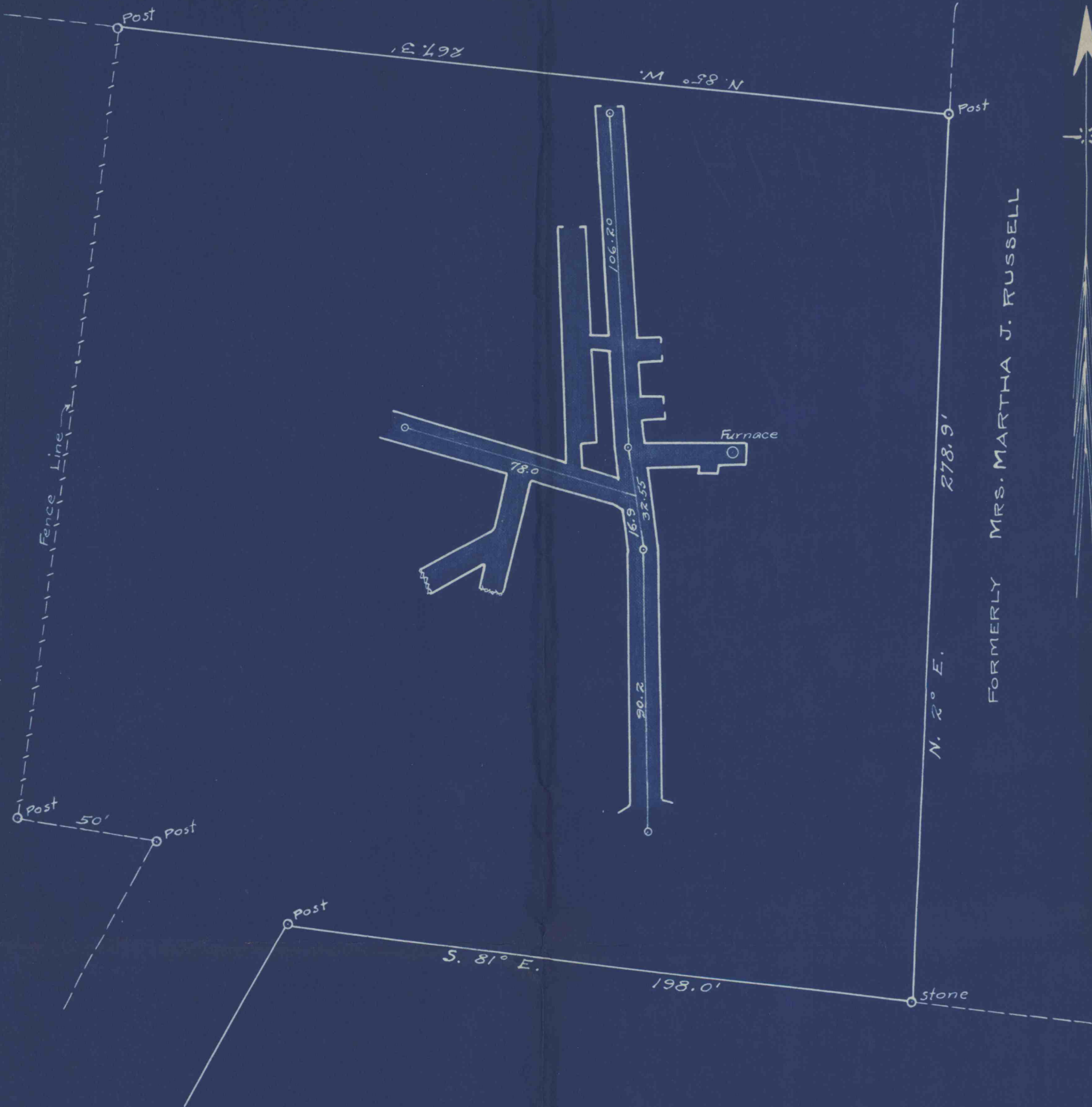


ALEXANDER McCONNELL



FORMERLY MRS. MARTHA J. RUSSELL

PLAN OF COAL MINE
 SURVEYED FOR
 B. TRILECZ
 SITUATE McCONNELLS MILLS
 CHARTIERS TOWNSHIP
 WASHINGTON CO. PA.

Scale 1" = 40' Oct. 1922
 H. M. Day, Engr.
 Canonsburg, Pa.

No.
524