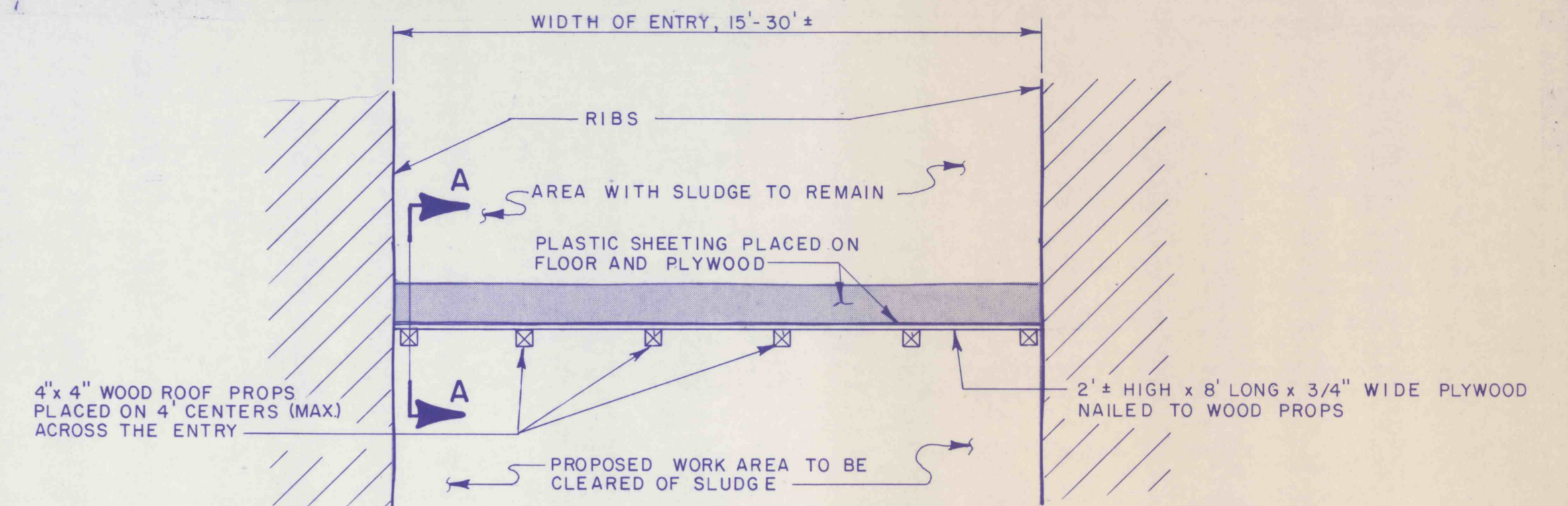


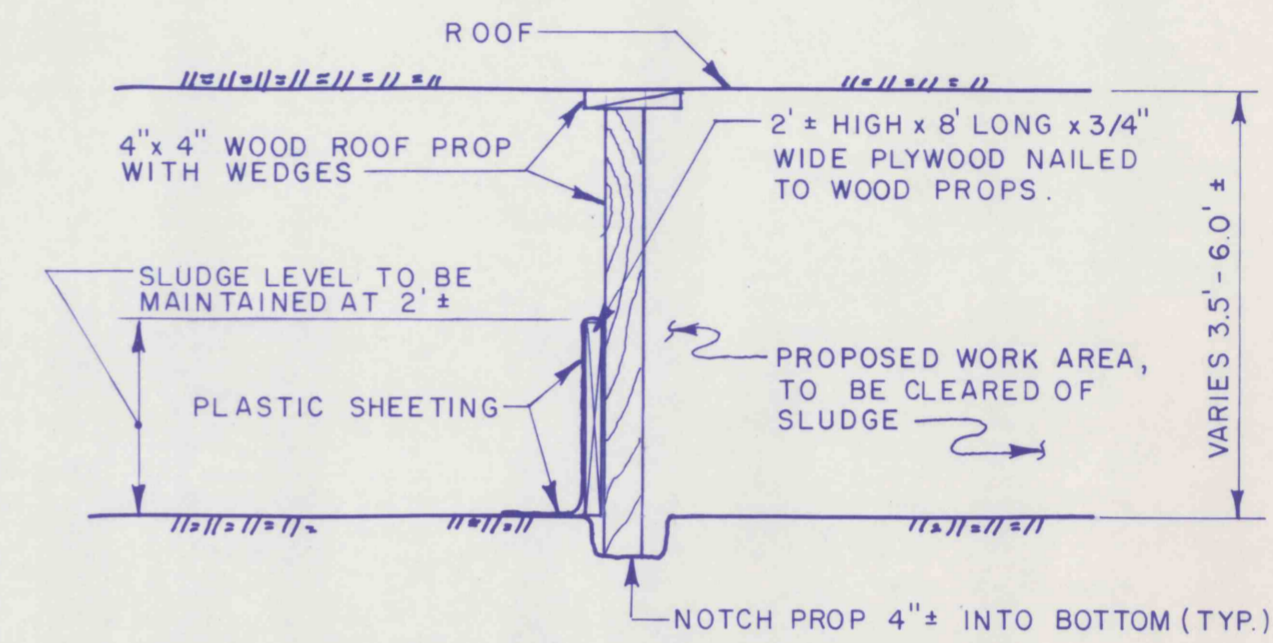
NOTE:
THE FOLLOWING DIMENSIONS AT THE GIVEN CROSS SECTIONS HAVE BEEN PROVIDED FOR QUANTITY ESTIMATION PURPOSES ONLY. ACTUAL QUANTITIES AND REQUIRED WORK MAY VARY DUE TO SPECIFIC SITE CONDITIONS.

- 1) ENTRY NO. 1:
SECTION A
HEIGHT OF ENTRY: 3.4'
WIDTH OF ENTRY: 20'
- SECTION B
HEIGHT OF ENTRY: 3.6'
WIDTH OF ENTRY: 15'
- 2) ENTRY NO. 2:
SECTION C
HEIGHT OF ENTRY: 5.5'
WIDTH OF ENTRY: VARIED 15' TO 25'
- 3) ENTRY NO. 3
SECTION D
HEIGHT OF ENTRY: 6'
WIDTH OF ENTRY: 15'
WIDTH BETWEEN PROP LINE: 9.2'
- SECTION E
HEIGHT OF ENTRY: 7'
WIDTH OF ENTRY: 11.5'
WIDTH BETWEEN PROP LINE: 9.8'
- 4) ENTRY NO. 4:
SECTION F
HEIGHT OF ENTRY: 3.7'
WIDTH OF ENTRY: 32'

NOTE:
ASSUME THAT ALL CROSS CUTS IN THE TRACK ENTRY, EXCEPT THOSE EQUIPPED WITH MAN DOORS, ARE GOBBED. THE NEAREST UNGOBBED CROSS CUTS ARE INBY APPROXIMATELY 800 ±.



CHECK DAM PLAN VIEW
N.T.S.



CHECK DAM / SECTION A-A
N.T.S.

NOTE:
AN ALTERNITIVE DESIGN CONCEPT IS BEING CONSIDERED AND MAY ALSO BE SUBMITTED FOR SEAL AREA NO. 51.

- LEGEND**
- HYDRAULIC MINE SEAL BULKHEAD
 - PRESSURE GROUTING ALIGNMENT HOLES SPACED 10' O.C.
 - SURFACE CONTOURS
 - BOTTOM OF COAL CONTOURS
 - NATURAL DRAINAGE PATTERN FLOW
 - GOBBED AREA, ASSUME NO TRAVEL
 - OVERCAST
 - EXISTING MAN DOOR
 - PROPOSED CHECK DAM

RECEIVED
SEP 29 1989
Dept. of Environmental Resources
McMurray District Office

APPROVED:	REVISIONS	ISSUED	SEAL AREA NO. 51 SITE PLAN	SCALE 1"=100'
	BIRD NO 3 MINE BIRD COAL COMPANY SITUATE STONY CREEK TOWNSHIP, CAMBRIA CO., PA CONEMAUGH TWP., SOMERSET CO., PA			
	JOB 86003	GWIN, DOBSON & FOREMAN, INC. CONSULTING ENGINEERS ALTOONA - PENNSYLVANIA		SHEET NO. 29
	FILE	DRAWN BY: ARH CHECKED:		