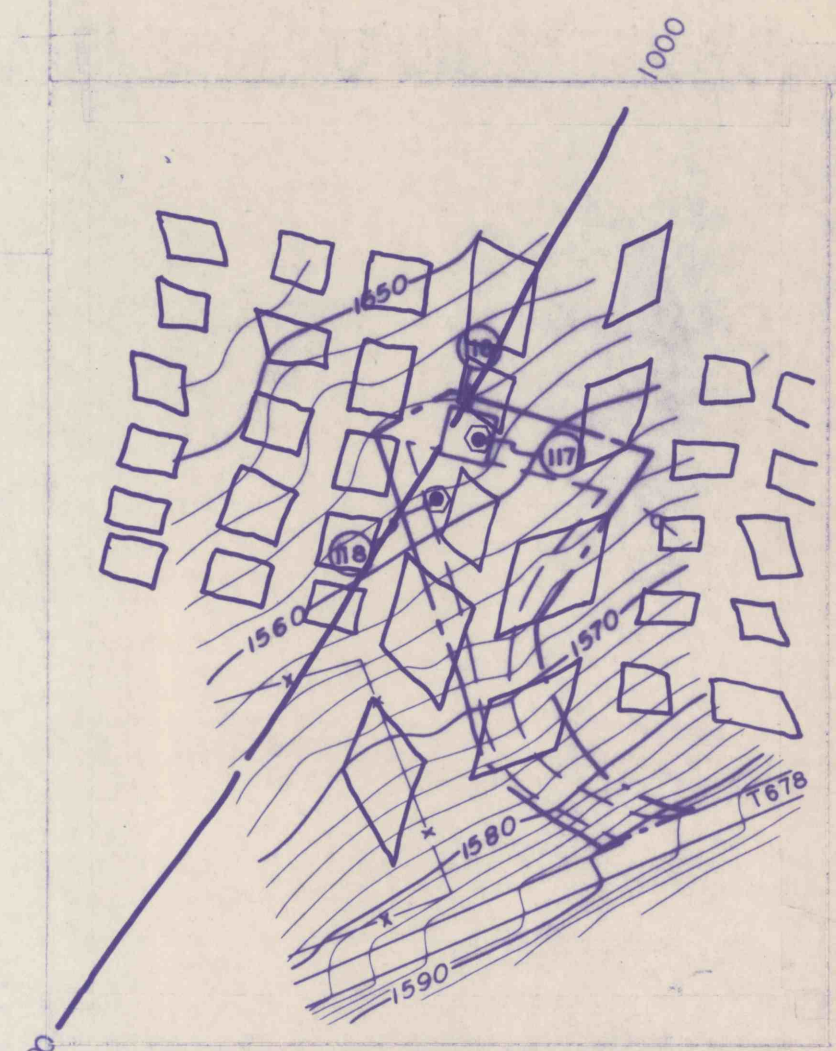


SEAL AREA 3 (SID 121) - NO. 3 AIRSHAFT

NOTE:  
SEE SHEET NO. 35 FOR REQUIRED SHAFT SEALING & BACKFILLING DETAILS.

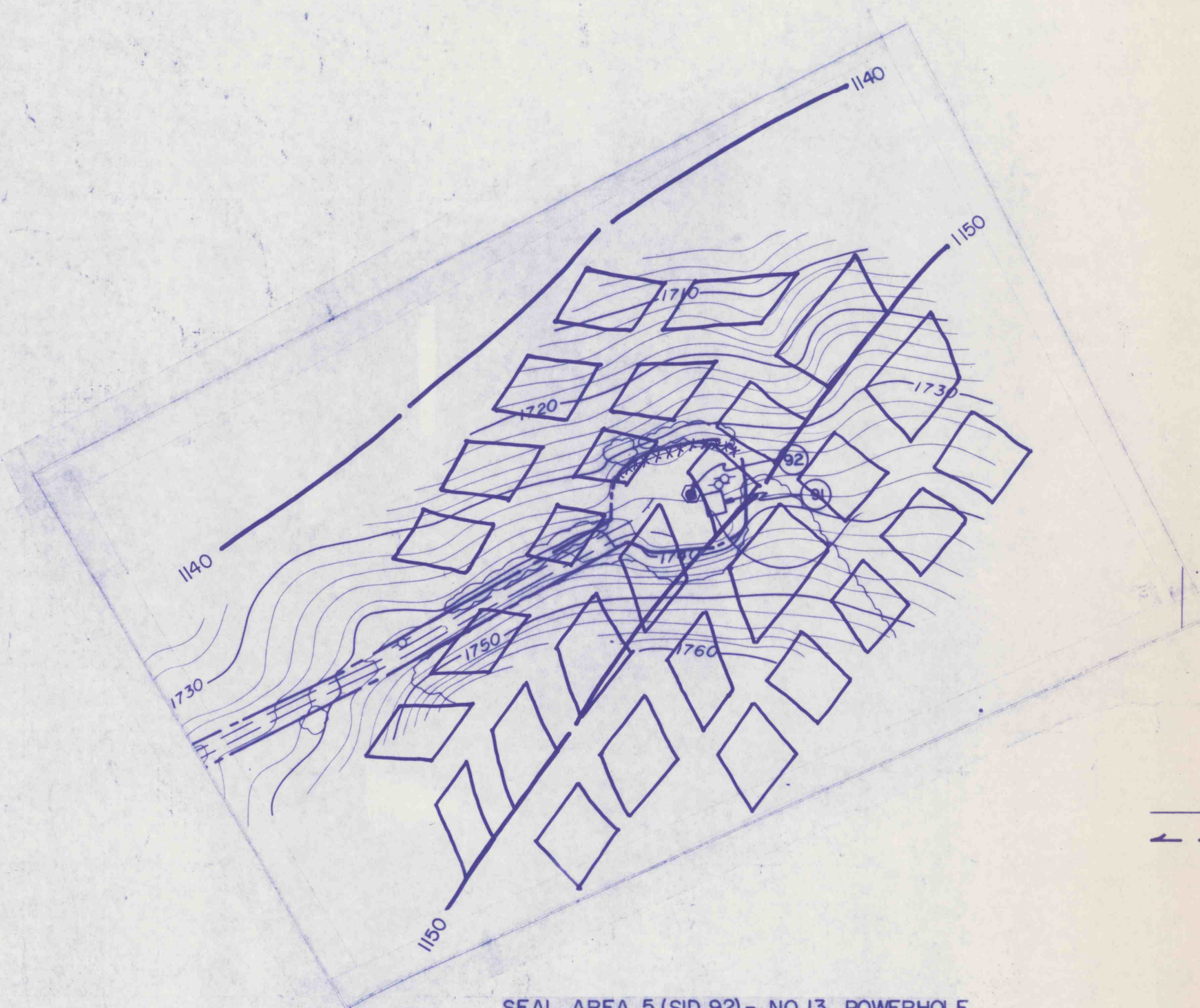


SEAL AREA 11 (SID 117) - NO. 1 DISCHARGE HOLE  
SEAL AREA 12 (SID 118) - NO. 2 DISCHARGE HOLE

NOTE:  
THESE BOREHOLES SHALL BE SEALED AS PER DETAILS ON SHEET NO. 38, FOLLOWING THE ESTABLISHMENT OF SUITABLE MINE POOL ELEVATIONAL & WATER QUALITY CONDITIONS.

NOTES:

- 1) SEAL AREAS 6, 9 & 16:  
SEAL AS PER DETAILS, SHEET NO. 38
- 2) SEAL AREA 7:  
SEE SHEET NO. 34 FOR REQUIRED SHAFT SEALING & BACKFILLING DETAILS
- 3) SEAL AREA 8:  
SEE SHEET NO. 30 FOR DETAILED EXISTING CONDITIONS & PROPOSED CONSTRUCTION ACTIVITIES



SEAL AREA 5 (SID 92) - NO. 13 POWERHOLE  
SEAL AS PER DETAILS, SHEET NO. 38

- SEAL AREA 6 (SID 88) - SLUDGE HOLE
- SEAL AREA 7 (SID 126) - NO. 3 EXHAUST SHAFT
- SEAL AREA 8 (SID 59) - SLOPE PORTAL
- SEAL AREA 9 (SID 87) - FRESH WATER HOLE
- SEAL AREA 16 (SID 72) - ROCK DUST HOLE

LEGEND  
 --- SOIL EROSION AND SEDIMENTATION CONTROL  
 --- PROPOSED DIVERSION DITCH

RECEIVED  
SEP 29 1989

Dept. of Environmental Resources  
McMurray District Office

REVISIONS	ISSUED	SEAL AREA SITE PLANS	SCALE
		BIRD NO. 3 MINE BIRD COAL COMPANY SITE STONY CREEK TOWNSHIP, CAMBRIA CO., PA DONEMAUGH TWP., SOMERSET CO. PA	1" = 100'
APPROVED:	JOB 86003	GWIN, DOBSON & FOREMAN, INC. CONSULTING ENGINEERS ALTOONA, PENNSYLVANIA	SHEET NO. 28
	FILE	DRAWN BY: BLK CHECKED:	