

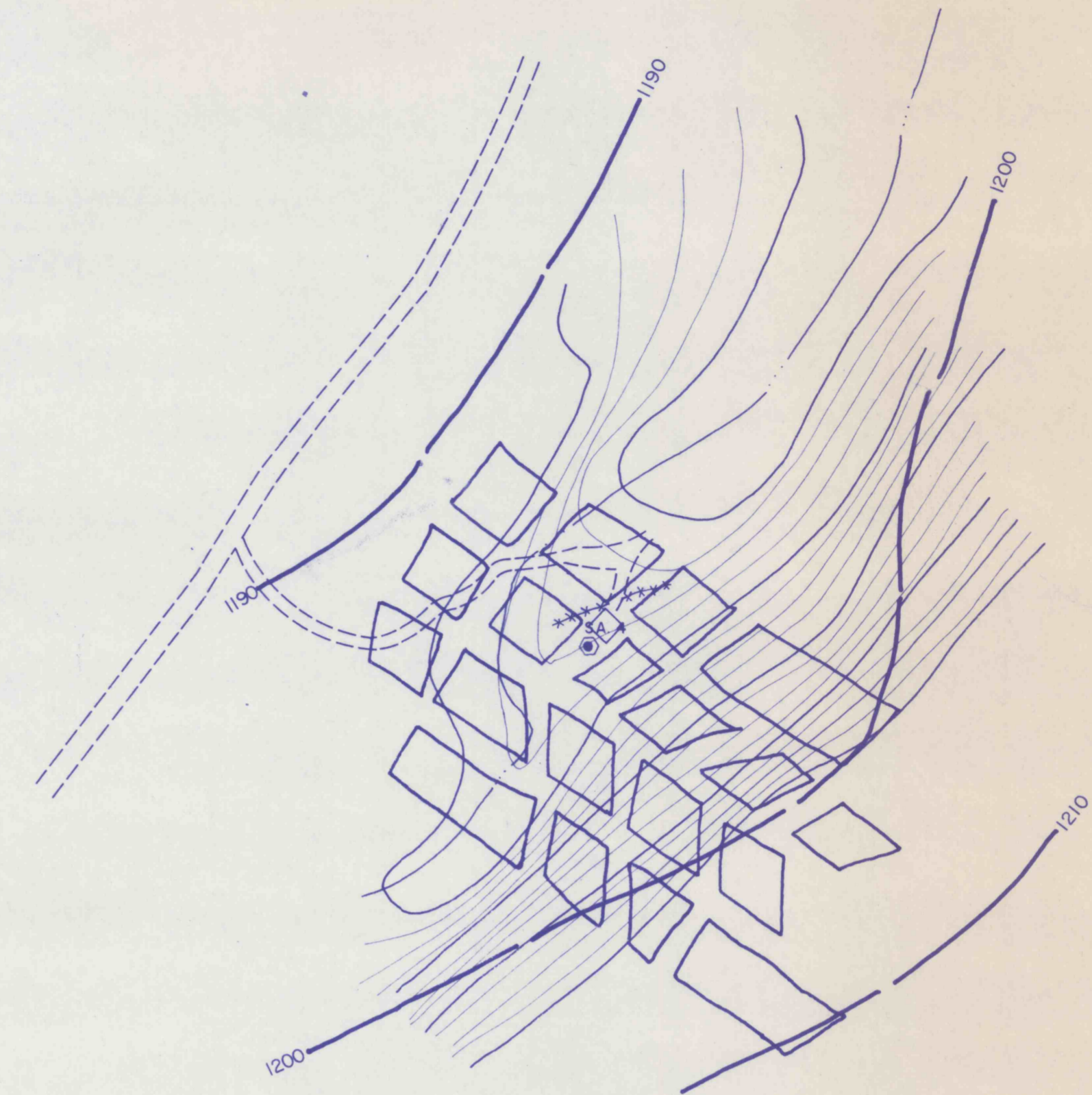
SEAL AREA 15 (SID 17) - C.P. DRAINHOLE
 SEAL AREA 13 (SID 29) - C.P. BELT SLOPE PORTAL
 SEAL AREA 14 (SID 30) - C.P. AIRSHAFT

- NOTES:**
- 1) SEAL AREA 13:
SEE SHEETS 31 & 41 FOR DETAILED EXISTING CONDITIONS & PROPOSED CONSTRUCTION ACTIVITIES.
 - 2) SEAL AREA 14:
SEE SHEET NO. 36 FOR REQUIRED SHAFT SEALING AND BACKFILLING DETAILS.
 - 3) SEAL AREA 15:
SEAL AS PER DETAILS, SHEET NO. 38.

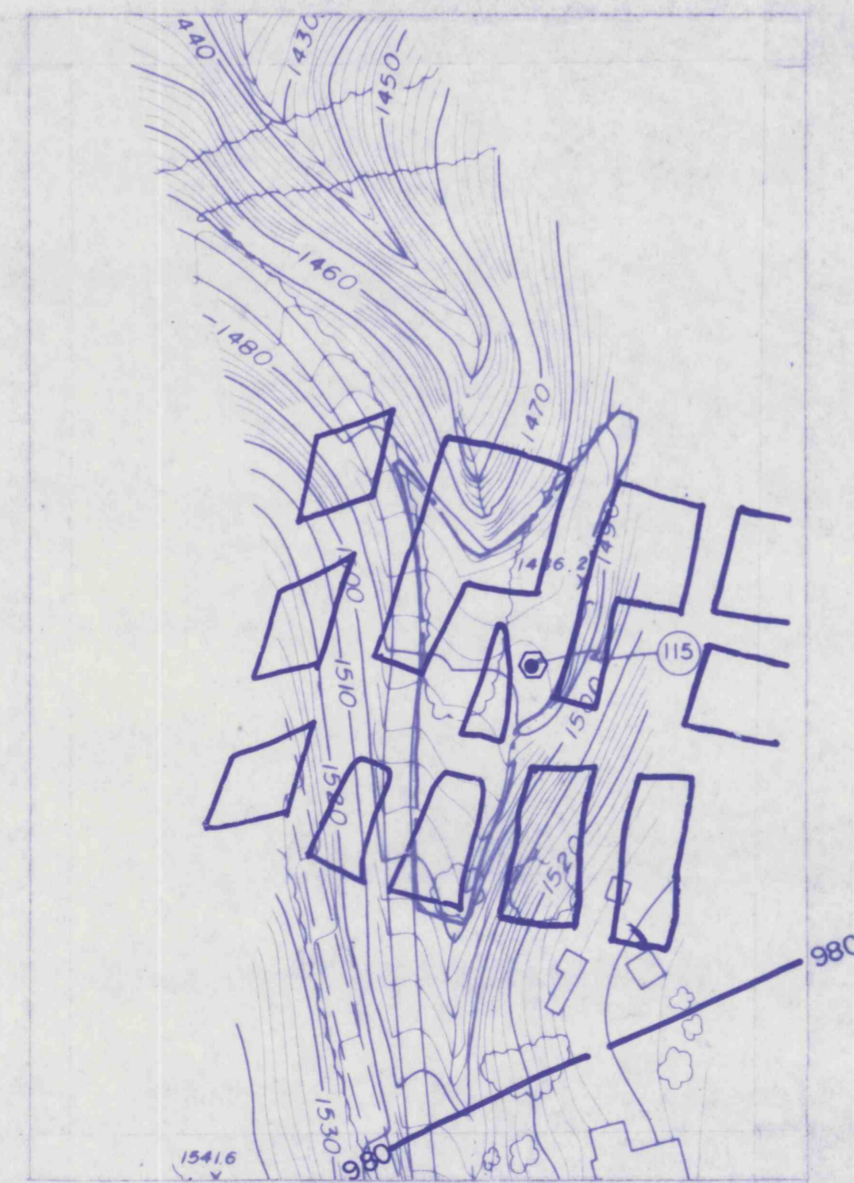


SEAL AREA 17 (SID 113) - WEBER AIRSHAFT

NOTE:
SEE SHEET NO. 37 FOR REQUIRED SHAFT SEALING AND BACKFILLING DETAILS.



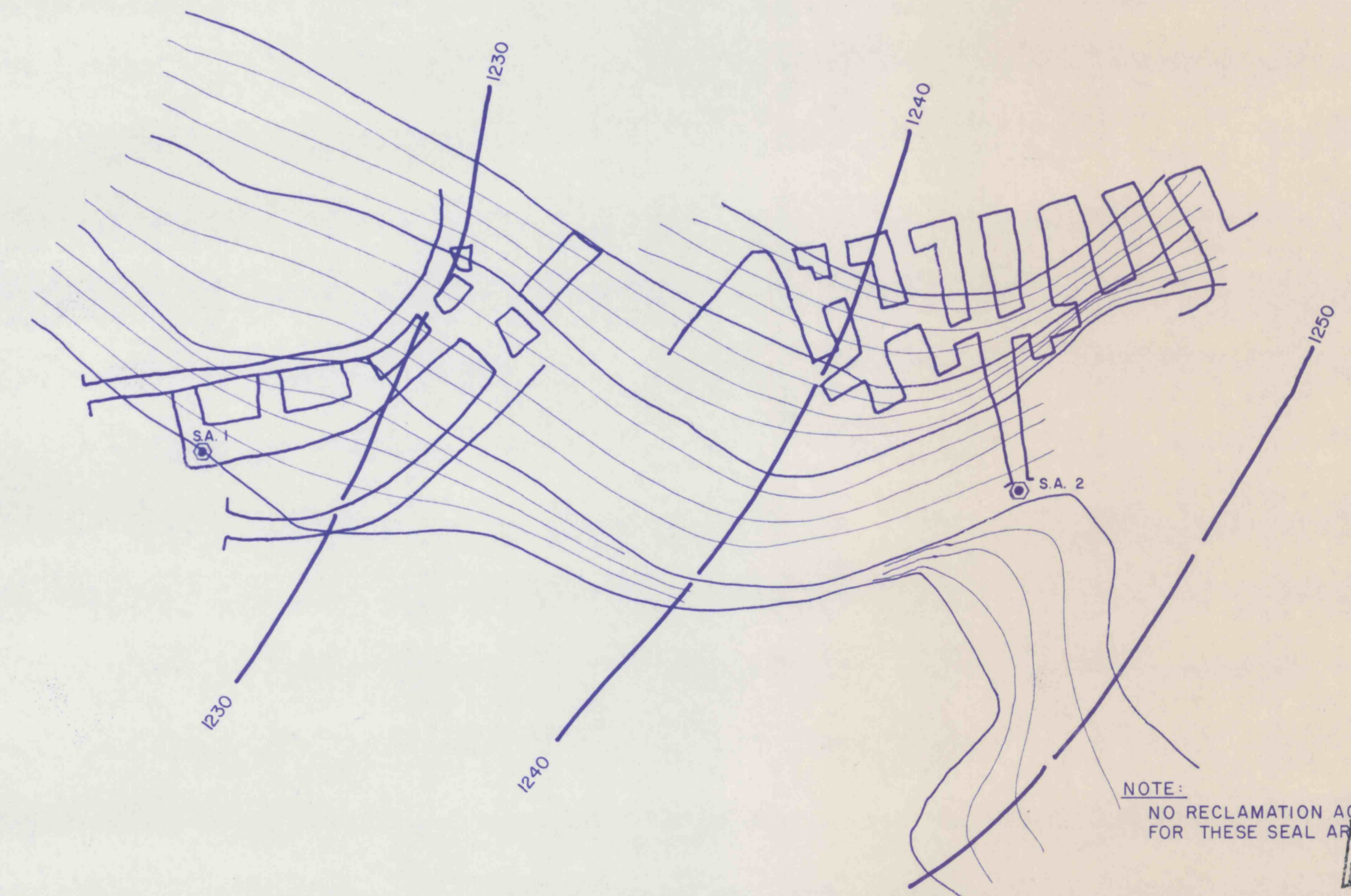
SEAL AREA 4 - NO. 9 POWERHOLE
 SEAL AS PER DETAILS, SHEET NO. 38



SEAL AREA 18 (SID 115) - DRAINHOLE
 SEAL AS PER DETAILS, SHEET NO. 38



SEAL AREA 10 (SID 90) STRAYER POWERHOLE
 SEAL AS PER DETAILS, SHEET NO. 38



SEAL AREA 1 - CENTRE CONCRETE DRAIN
 SEAL AREA 2 - WENTZ ACCESS

NOTE:
NO RECLAMATION ACTIVITIES ARE PROPOSED FOR THESE SEAL AREAS.

RECEIVED
 SEP 29 1989

Dept. of Environmental Resources
 McMurray District Office

- LEGEND**
- ***** SOIL EROSION AND SEDIMENTATION CONTROL
 - - - - - PROPOSED DIVERSION DITCH

APPROVED:	REVISIONS	ISSUED	SEAL AREA SITE PLANS	SCALE 1"=100'
	BIRD NO. 3 MINE BIRD COAL COMPANY SITUATE STONY CREEK TOWNSHIP, CAMBRIA CO., PA CONEMAUGH TWP. SOMERSET CO., PA.			SHEET NO. 27
	JOB 86003	FILE	GWIN, DOBSON & FOREMAN, INC. CONSULTING ENGINEERS ALTOONA, PENNSYLVANIA	
			DRAWN BY: BLK CHECKED:	