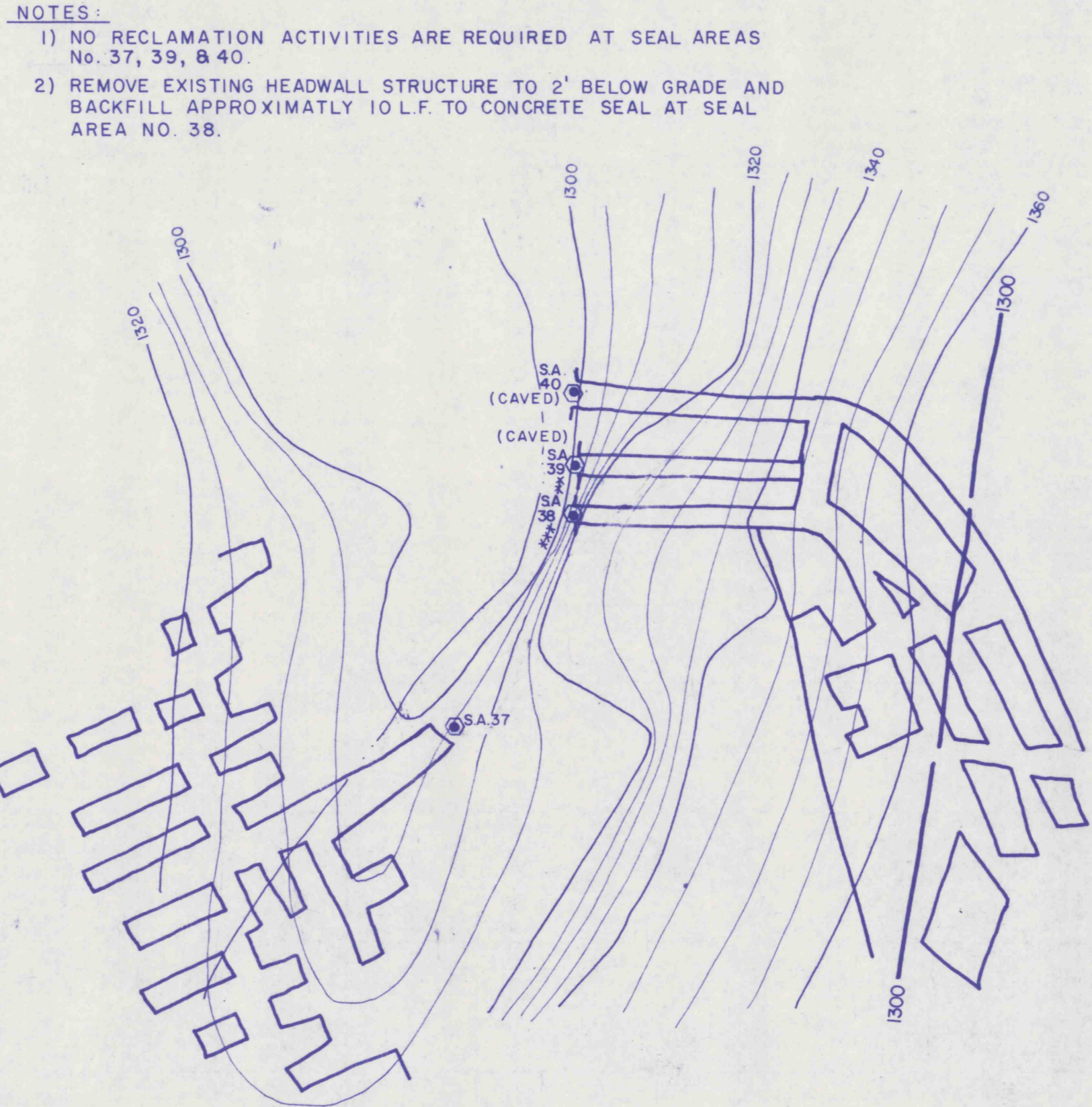


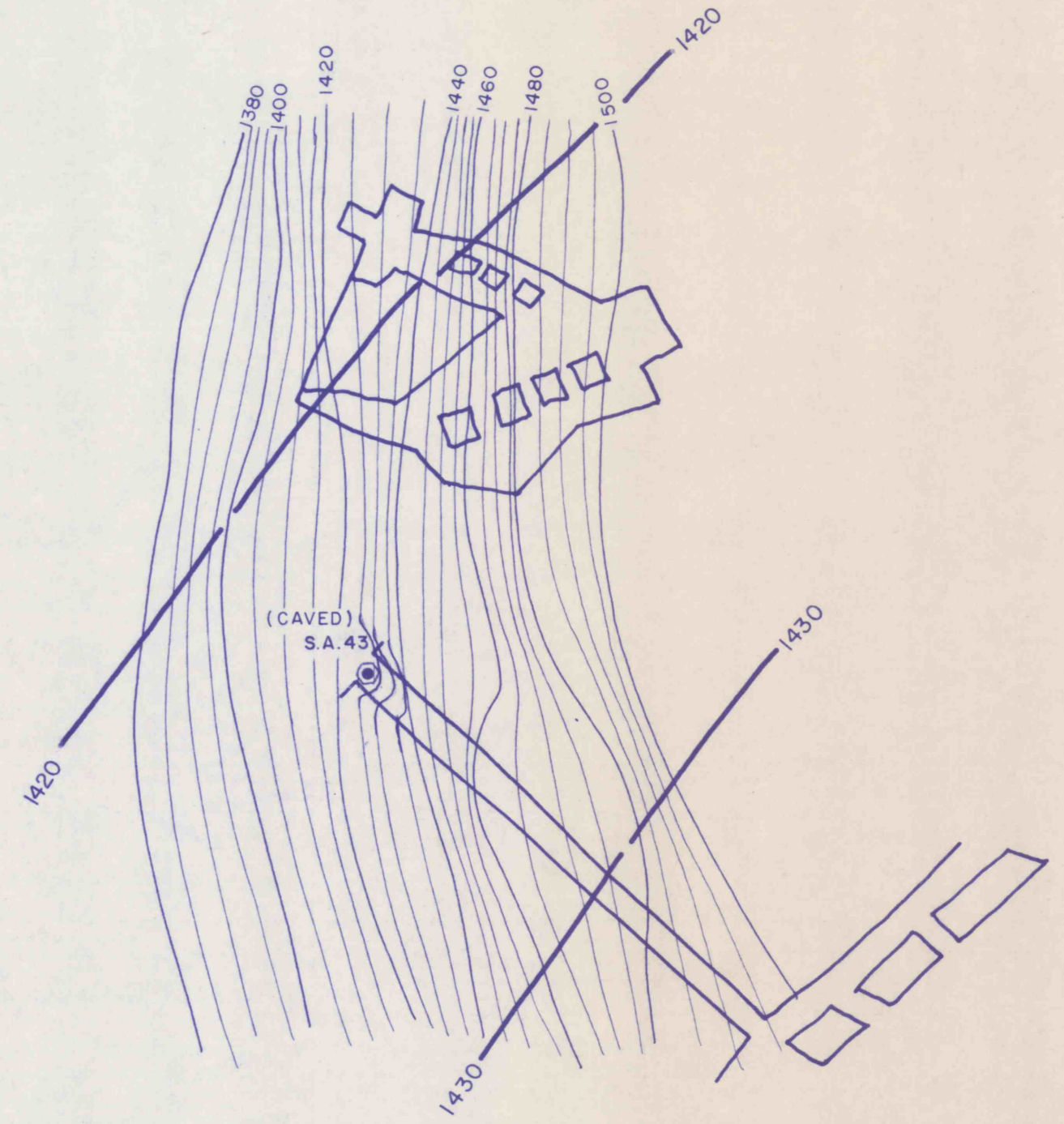
NOTES:
 1) FOR MORE DETAILED EXISTING CONDITIONS AND PROPOSED RECLAMATION ACTIVITIES AT SEAL AREA NO. 47, SEE SHEET NO. 40.
 2) NO RECLAMATION ACTIVITIES ARE REQUIRED AT SEAL AREAS 46, 48 & 49.

SEAL AREA 46- BIRD NO. 5 DRIFT
 SEAL AREA 47- BIRD NO. 5 DRIFT
 SEAL AREA 48- BIRD NO. 5 DRIFT
 SEAL AREA 49- BIRD NO. 5 DRIFT



NOTES:
 1) NO RECLAMATION ACTIVITIES ARE REQUIRED AT SEAL AREAS No. 37, 39, & 40.
 2) REMOVE EXISTING HEADWALL STRUCTURE TO 2' BELOW GRADE AND BACKFILL APPROXIMATELY 10 L.F. TO CONCRETE SEAL AT SEAL AREA NO. 38.

SEAL AREA 37- BIRD NO. 1 AIRSHAFT
 SEAL AREA 38- BIRD NO. 1 DRIFT
 SEAL AREA 39- BIRD NO. 1 DRIFT
 SEAL AREA 40- BIRD NO. 1 DRIFT



SEAL AREA 43- BIRD NO. 5 DRIFT

NOTE:
 NO RECLAMATION ACTIVITIES ARE REQUIRED AT THIS SEAL AREA.

LEGEND
 ***** SOIL EROSION AND SEDIMENTATION CONTROL
 ——— PROPOSED DIVERSION DITCH

RECEIVED

SEP 29 1989
 Dept. of Environmental Resources
 McMurray District Office

APPROVED:	REVISIONS	ISSUED	SEAL AREA SITE PLANS	SCALE 1"= 100'
			BIRD NO. 2 MINE BIRD COAL COMPANY SITUATE STONY CREEK TOWNSHIP, CAMBRIA CO., PA. CONEMAUGH TWP, SOMERSET CO., PA.	
		JOB 86003	GWIN, DOBSON & FOREMAN, INC. CONSULTING ENGINEERS ALTOONA · PENNSYLVANIA	SHEET NO. 26
		FILE	DRAWN BY: BLK CHECKED:	

SEP-LESLY TO - HQ - 03 HOURS BY INVENTRY 07/25/01