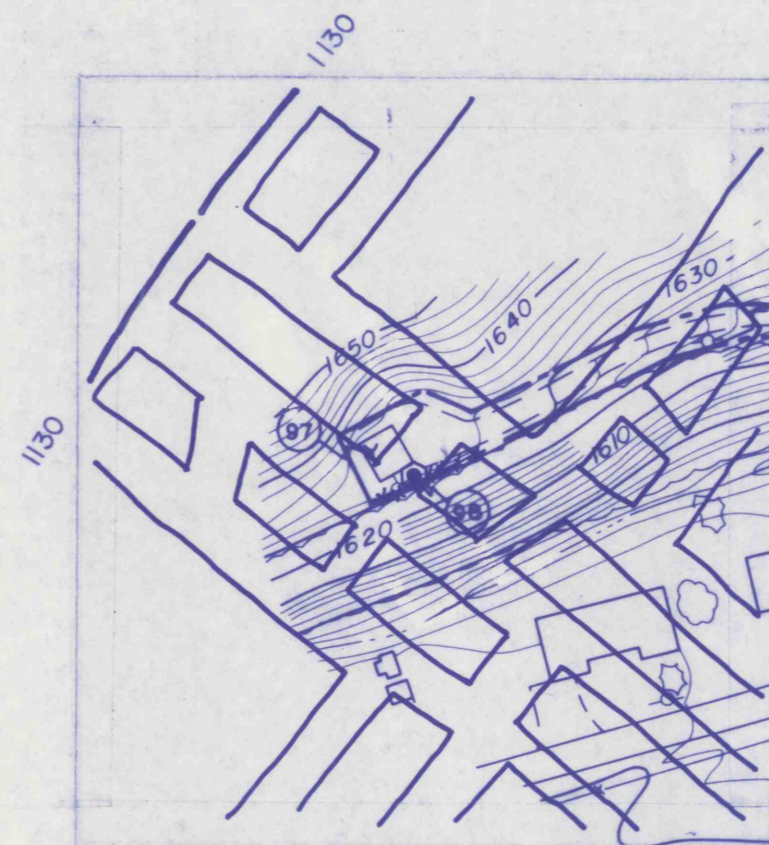
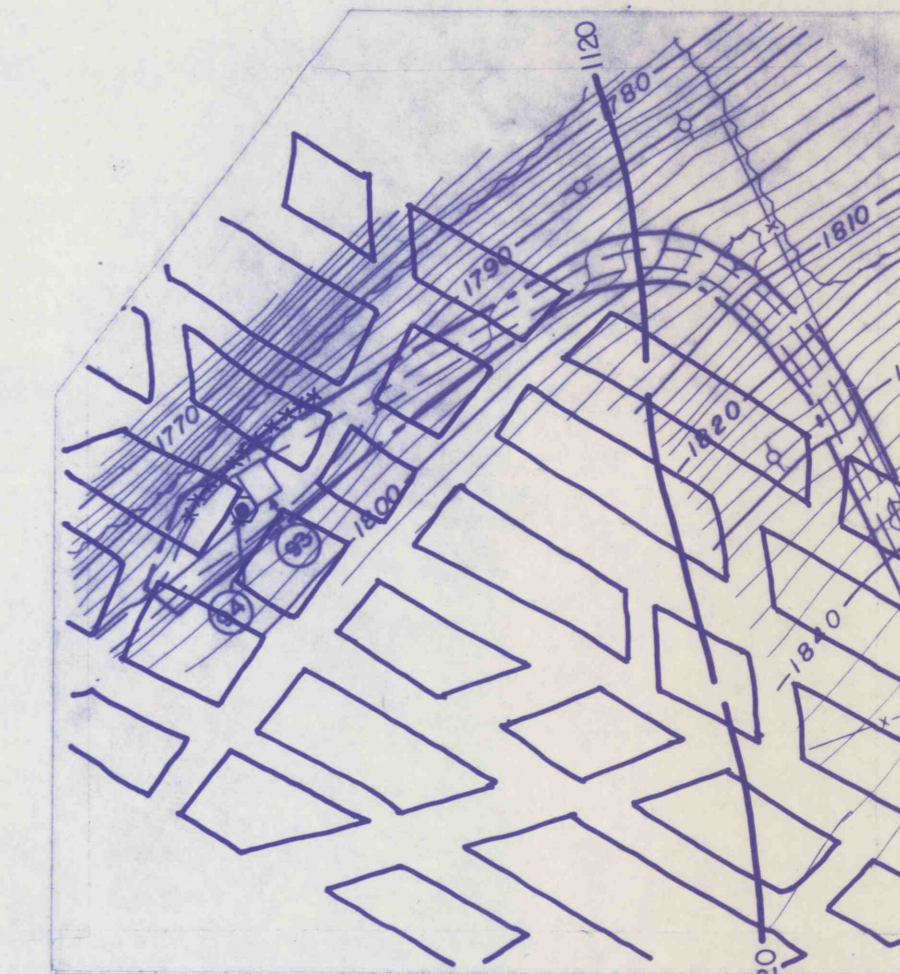


SEAL AREA 17-(SID 113) - WEBER AIRSHAFT  
 SEAL AREA 21-(SID 109) - NO. 15 POWERHOLE  
 SEAL AREA 22-(SID 108) - NO. 2 SUBST. POWERHOLE  
 SEAL AREA 23-(SID 110) - NO. 2 EXHAUST SHAFT

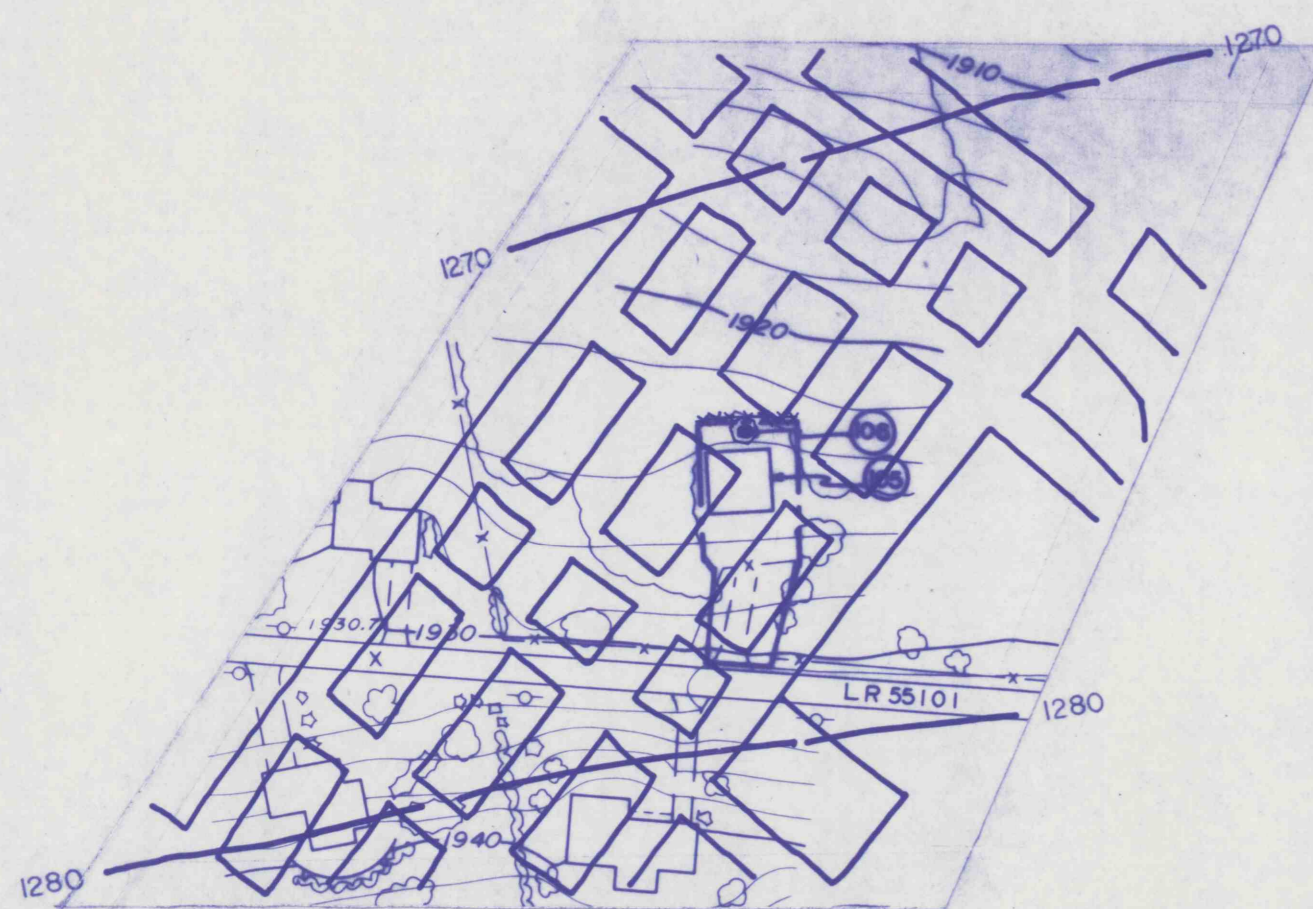
- NOTES:
- 1) SEAL AREA 17:  
SEE SHEET NO. 37 FOR REQUIRED SHAFT SEALING & BACKFILLING DETAILS.
  - 2) SEAL AREA 23:  
SEE SHEET NO. 33 FOR REQUIRED SHAFT SEALING & BACKFILLING DETAILS.
  - 3) SEAL AREA 21 & 22:  
SEAL AS PER DETAILS, SHEET No. 38.



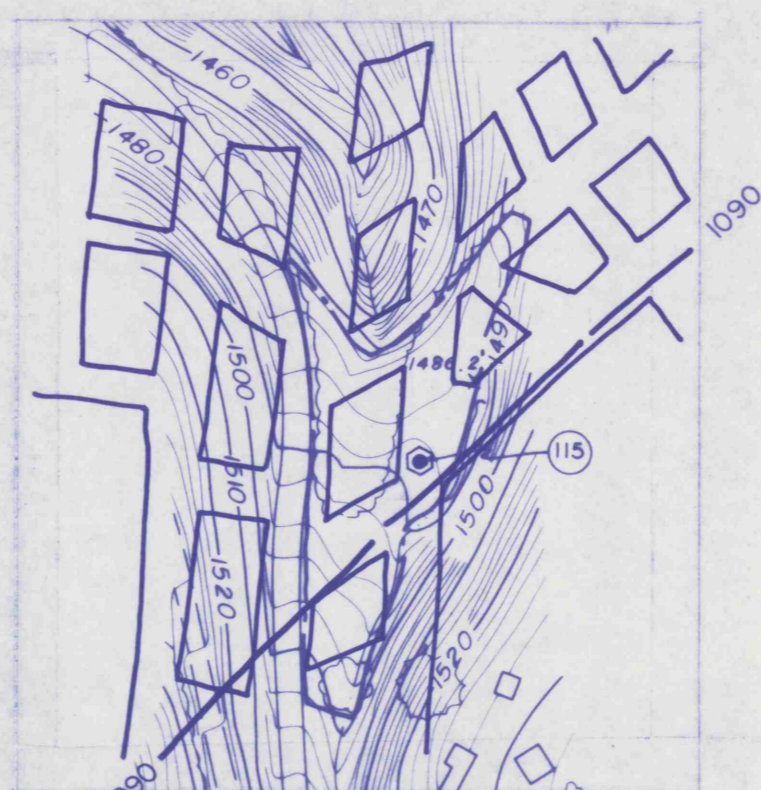
SEAL AREA 24-(SID 98) - NO. 11 POWERHOLE  
 SEAL AS PER DETAILS, SHEET NO. 38



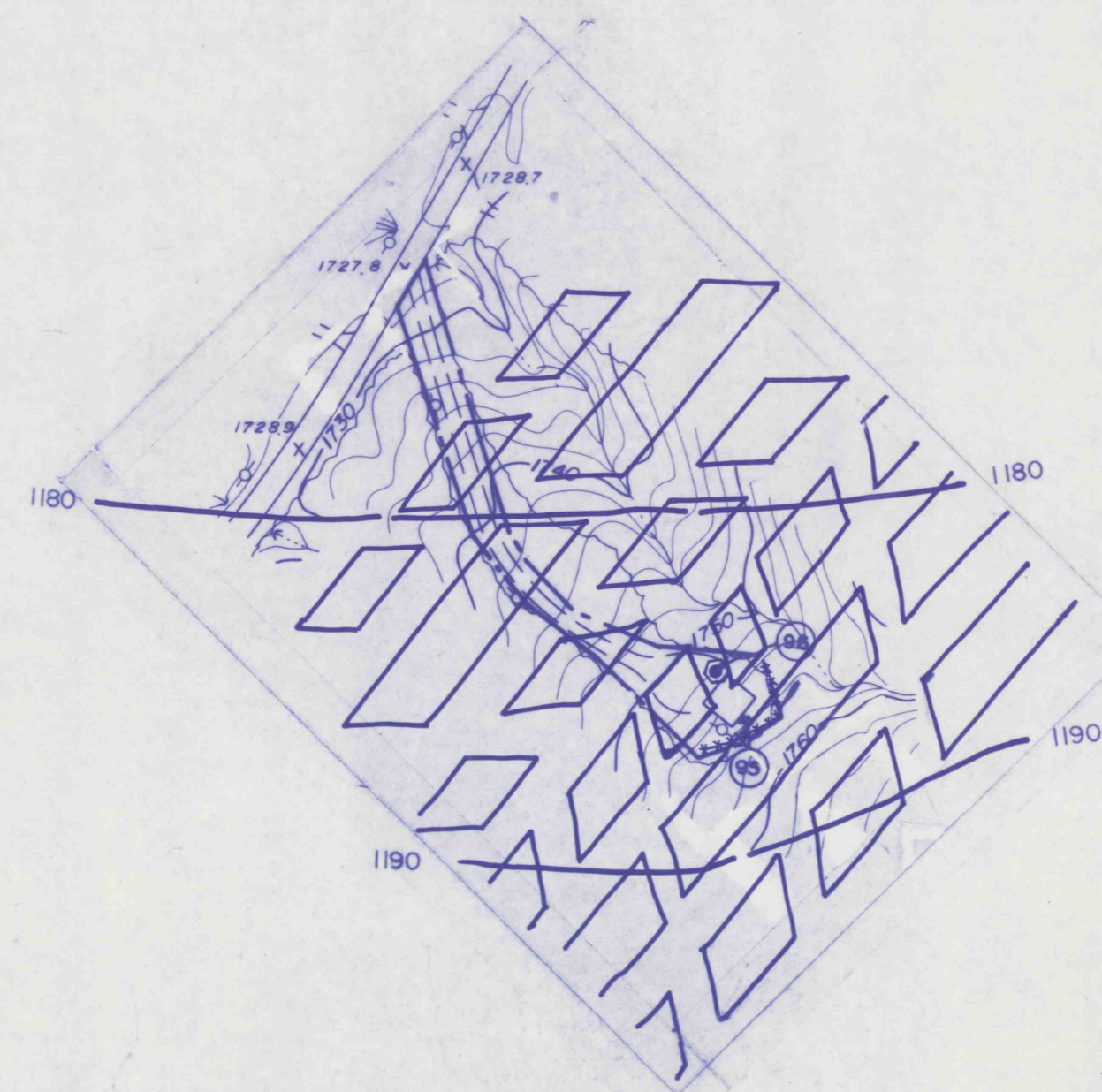
SEAL AREA 20-(SID 94) - NO. 14 POWERHOLE  
 SEAL AS PER DETAILS, SHEET NO. 38



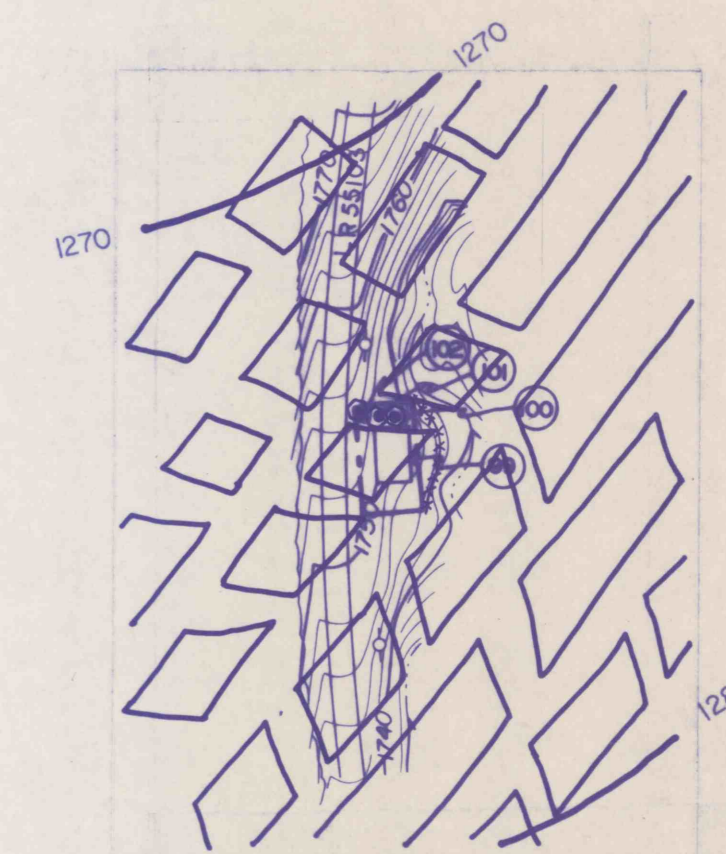
SEAL AREA 30-(SID 106) NO. 3 SUBST. POWERHOLE  
 SEAL AS PER DETAILS, SHEET NO. 38



SEAL AREA 18-(SID 115) DRAINHOLE  
 SEAL AS PER DETAILS, SHEET NO. 38



SEAL AREA 25-(SID 96) - NO. 12 POWERHOLE  
 SEAL AS PER DETAILS, SHEET NO. 38



SEAL AREA 26-(SID 101) - NO. 6-A POWERHOLE  
 SEAL AREA 27-(SID 100) - NO. 6 SUBST. POWERHOLE  
 SEAL AREA 28-(SID 102) - NO. 6 WATERHOLE  
 SEAL AS PER DETAILS, SHEET NO. 38

LEGEND  
 \*\*\*\*\* SOIL EROSION AND SEDIMENTATION CONTROL  
 - - - - - PROPOSED DIVERSION DITCH

RECEIVED

SEP 29 1989

Dept. of Environmental Resources  
 McMurray District Office

REVISIONS	ISSUED	SEAL AREA SITE PLANS	SCALE 1"=100'
		BIRD NO. 2 MINE BIRD COAL COMPANY SITUATE STONY CREEK TOWNSHIP, CAMBRIA CO., PA. CONEMAUGH TWP. SOMERSET CO., PA.	
APPROVED:	JOB 86003	GWIN, DOBSON & FOREMAN, INC.	
	FILE	CONSULTING ENGINEERS ALTOONA PENNSYLVANIA	
		DRAWN BY: BLK	CHECKED:
			SHEET NO. 25