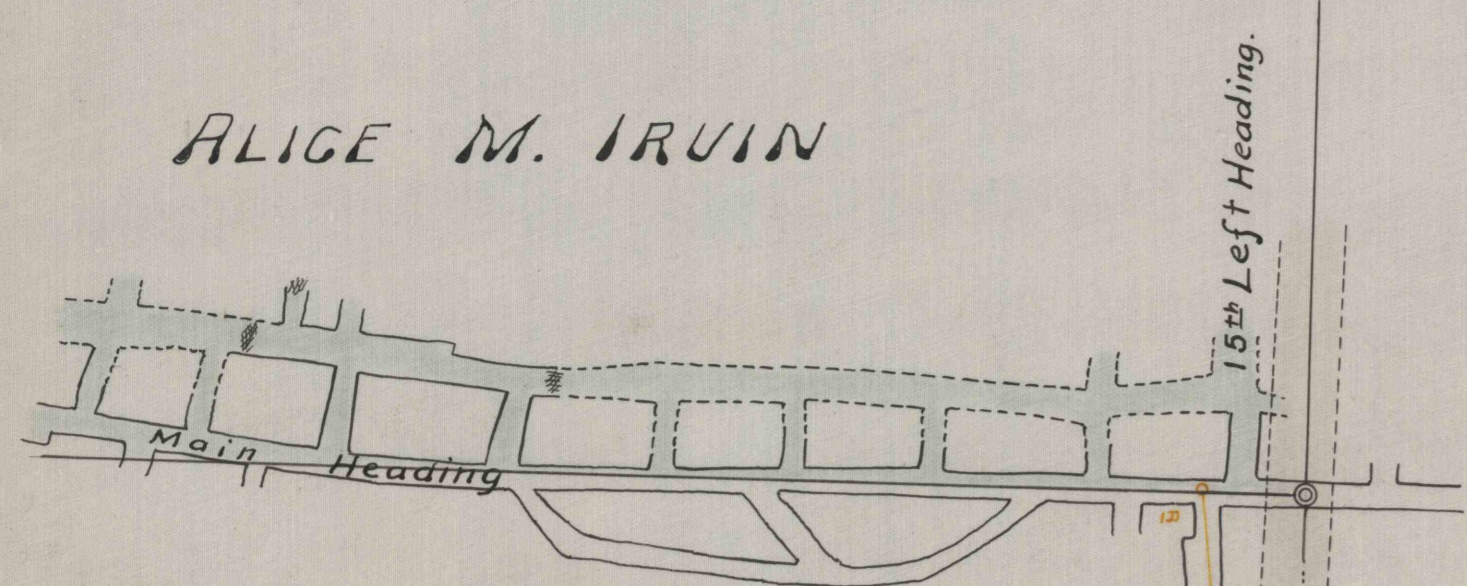


ALICE M. IRVIN



15th Right Heading

J. G. MCGOY

Mrs. Wm DICKINSON



ALICE M. IRVIN  
53.01 Acres.

F.F. FLYNN

RICKERTS

J. DILLON

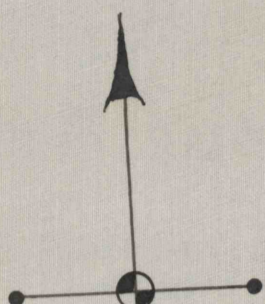
John Herdman

GEORGE HERDMAN

Addition to Alice M. Irvin Lease to  
Iryona Coal and Coke Company at  
Pine Run N<sup>o</sup> 10 Mine.

1 in = 100 ft.

Phillipsburg, Pa. 1921. H. Pitt D. Larkin, Mining Engr.



Magnetic Meridian  
Mag. var. 1912

(From box of James G.C. #3 comb - compare)  
Baltimore, Pa. 12368  
E. O. Fox 178  
MEMPHIS COMPANY  
PINE RUN CO. PA.  
PINE RUN CO. PA.

2153.27'

Post & Stones

53° 48' W.

10971.7'

N. 56° 45' W.

Post

N. 5° 25' E.

S. 83° 04' E.

Iron Pin

2153.8'