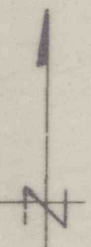


W. LUNN TRACT  
66.26 AC

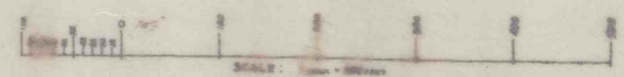
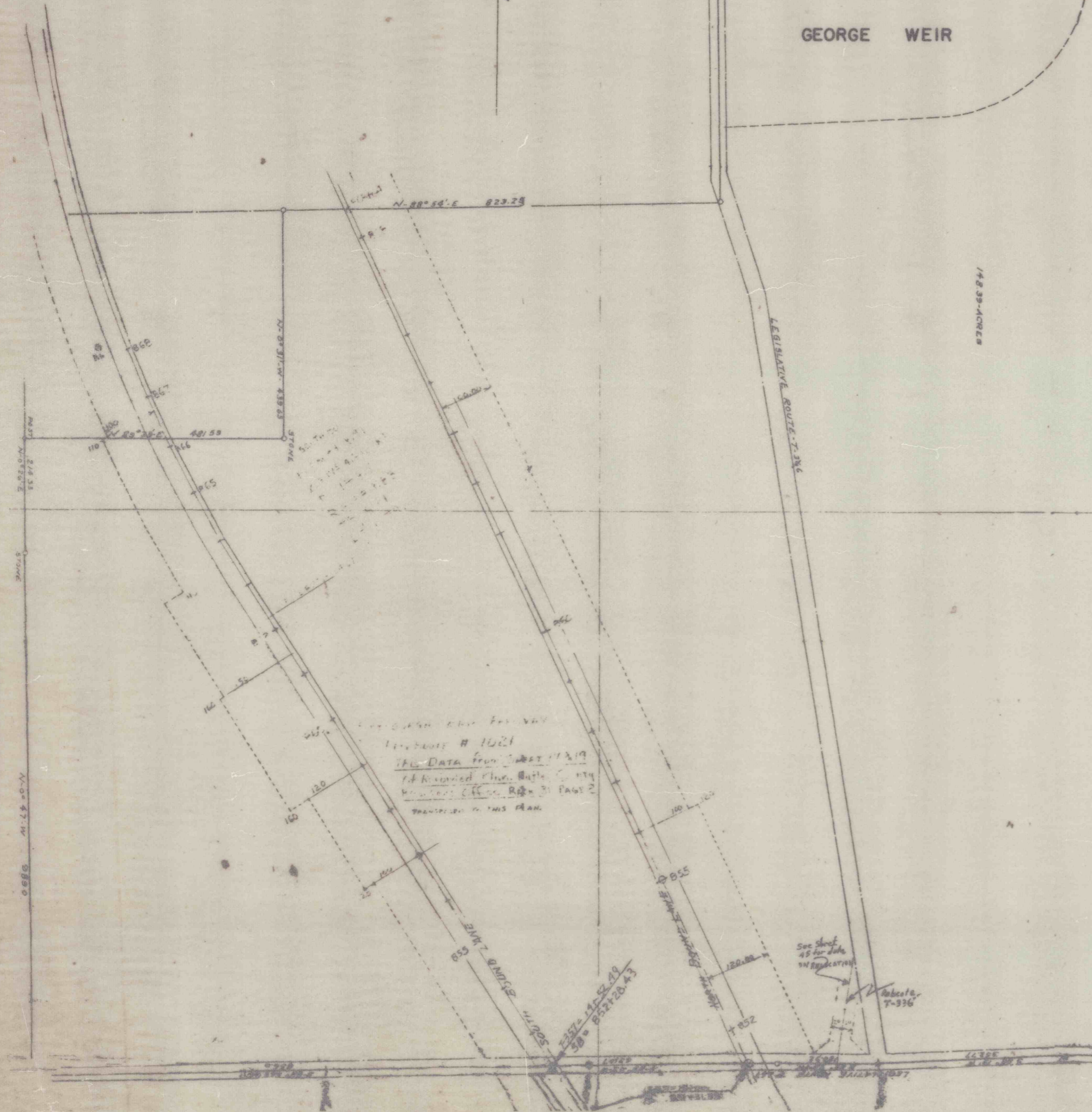
RALPH A. WEISS TRACT  
66.32 AC

GEORGE WEIR

RESERVE



*Handwritten note:*  
Refer to map  
for the location of  
the building



STANFORD COAL CO.  
MUDDY CREEK TOWNSHIP  
BUTLER COUNTY, PA.  
NOV. 1953 SCALE 1" = 100'  
McMANON ENGINEERING CO.

BUTLER PENNA. STATE DATA

NO.	NAME	DATE	REMARKS
1	Stanford Coal Co.	NOV 1953	Map of Muddy Creek Township
2	McManon Engineering Co.	NOV 1953	Map of Muddy Creek Township
3	Butler County	NOV 1953	Map of Muddy Creek Township
4	Butler County	NOV 1953	Map of Muddy Creek Township
5	Butler County	NOV 1953	Map of Muddy Creek Township
6	Butler County	NOV 1953	Map of Muddy Creek Township
7	Butler County	NOV 1953	Map of Muddy Creek Township
8	Butler County	NOV 1953	Map of Muddy Creek Township
9	Butler County	NOV 1953	Map of Muddy Creek Township
10	Butler County	NOV 1953	Map of Muddy Creek Township

1" = 200'

CLMB 0004