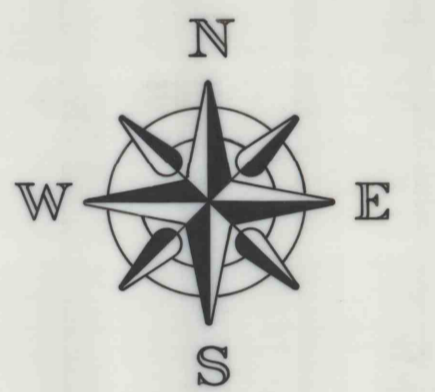
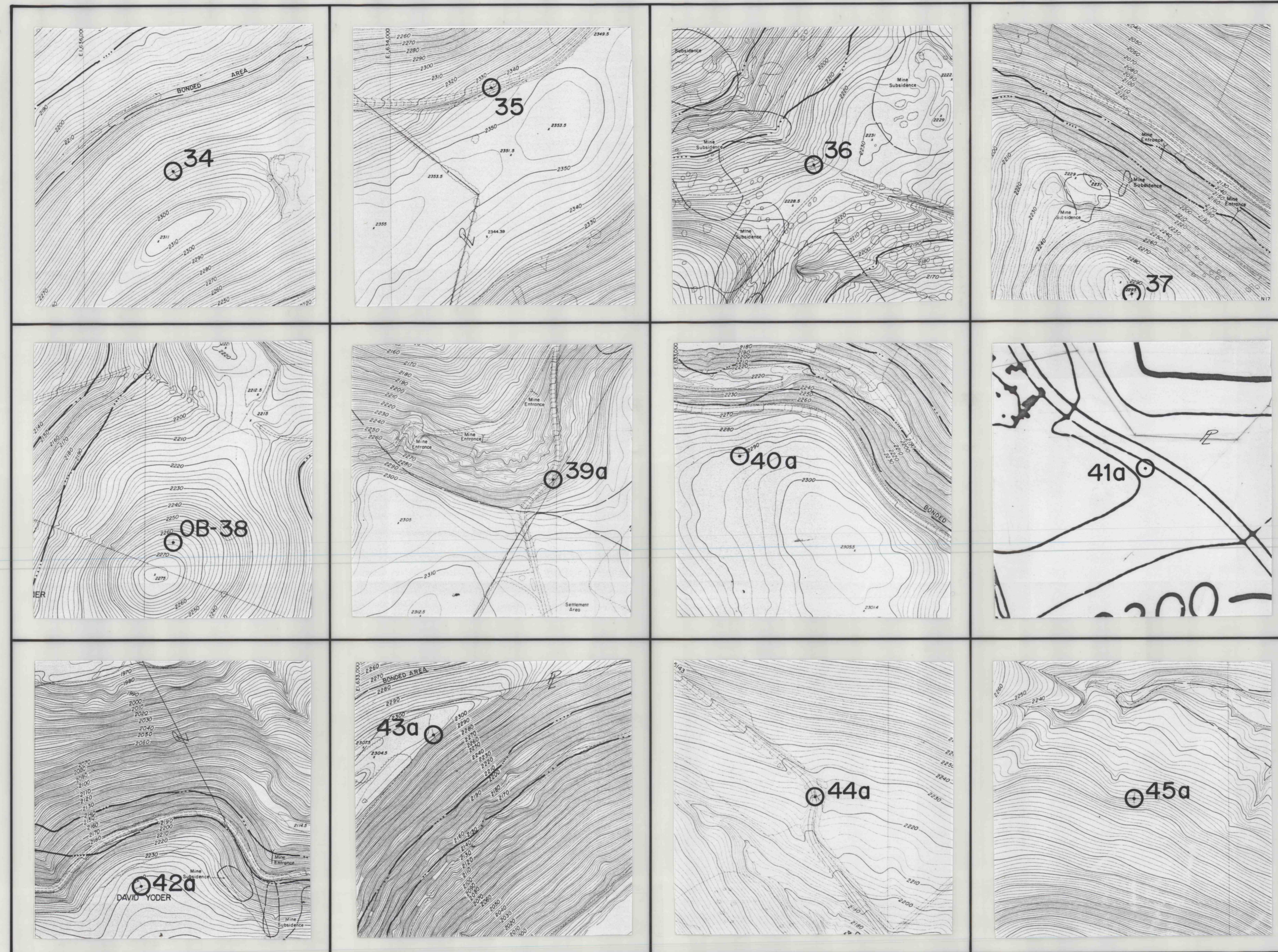


LEGEND

- FENCE x x x
- WOODS LINE [wavy line symbol]
- PROPERTY LINE [line with arrow symbol]
- PROPOSED DRILL HOLE... [circle with crosshair symbol] ²¹



NO.	DATE	REVISION	APPR.
SUBMITTED			
APPROVED			
DIRECTOR, DIVISION OF ABANDONED MINE RECLAMATION			
APPROVED			
DIRECTOR, BUREAU OF RESOURCES PROGRAMMING			
COMMONWEALTH OF PENNSYLVANIA DEPARTMENT OF ENVIRONMENTAL RESOURCES OFFICE OF RESOURCES MANAGEMENT			
PROJECT NO. SL 118 - 6			
TEST BORING SUBSURFACE INVESTIGATION			
SHAW MINES COMPLEX SOMERSET COUNTY			
WORK AREA FOR HOLES 34 THRU 45			
MEISER & EARL / HYDROGEOLOGISTS			
DRAWN BY R. J. T.	DATE JUNE 8, 1982	DRAWING NO. 4 of 4	
CHECKED BY	SCALE 1 in. = 200 ft.		