

LIST OF UTILITIES

LPLC - LAUREL PIPE LINE COMPANY
 Contact: Mr. T.N. Gordon, District Superintendent
 467 Moon Clinton Road
 Coraopolis, Pa. 15108
 Phone: (412) 264-7432
 Call At Least 2 Weeks Prior To Drilling
 Refer Serial #0055

APLC - ARCO PIPE LINE COMPANY
 Contact: Mr. John Shylo, Area Maintenance Supervisor
 Burns Avenue, P.O. Box 168
 Hollidaysburg, Pa. 15248
 Phone: (814) 942-1225

CGSC - CONSOLIDATED GAS SUPPLY CORPORATION
 Contact: Mr. John L. Holder
 P.O. Box 113
 Murrysville, Pa. 15668
 Phone: (412) 327-6941
 Refer Serial #5M22

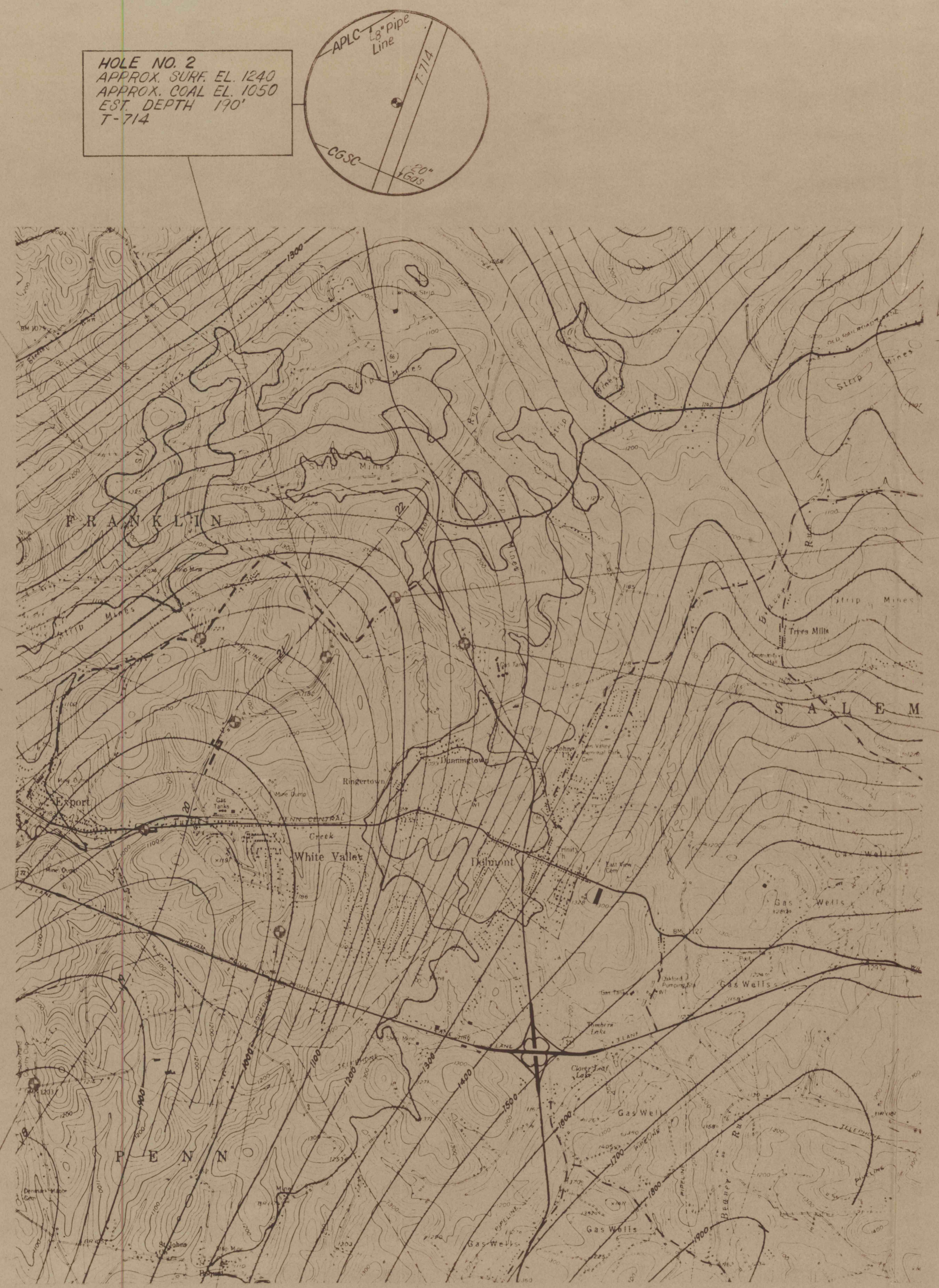
PNGC - PEOPLES NATURAL GAS COMPANY
 Contact: Mr. Ron Myers
 P.O. Box 21-P, R.D. 8
 Greensburg, Pa. 15601
 Phone: (412) 834-9120

CGPI - COLUMBIA GAS OF PENNSYLVANIA, INC.
 Contact: Plant Foreman
 121 S. Second Street
 Jenette, Pa. 15244
 Phone: (412) 527-1528
 Call At Least 3 Days Prior To Drilling

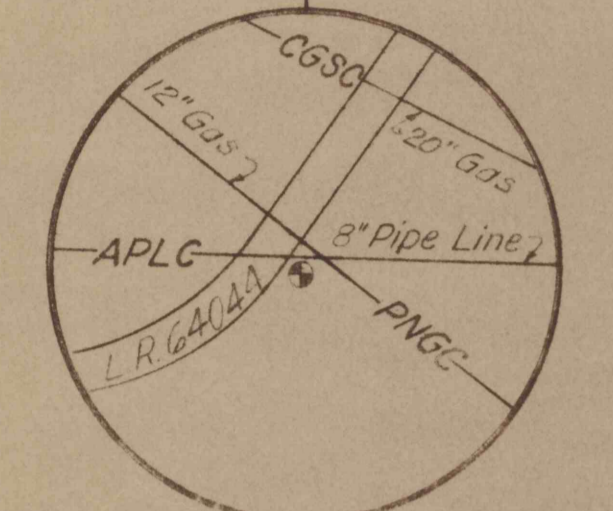
MTC - THE MURKYSVILLE TELEPHONE COMPANY
 Contact: Mr. Earl Poorbaugh or Mr. Raj Zang
 Export, Pa. 15622
 Phone: (412) 327-3131 Ext. 265
 Call At Least 2 Days Prior To Drilling

W - MUNICIPAL AUTHORITY OF WESTMORELAND COUNTY
 Contact: Mr. Lester C. Shrader, Distribution Superintendent
 P.O. Box 730
 Greensburg, Pa. 15601
 Phone: (412) 834-6500 Ext. 30

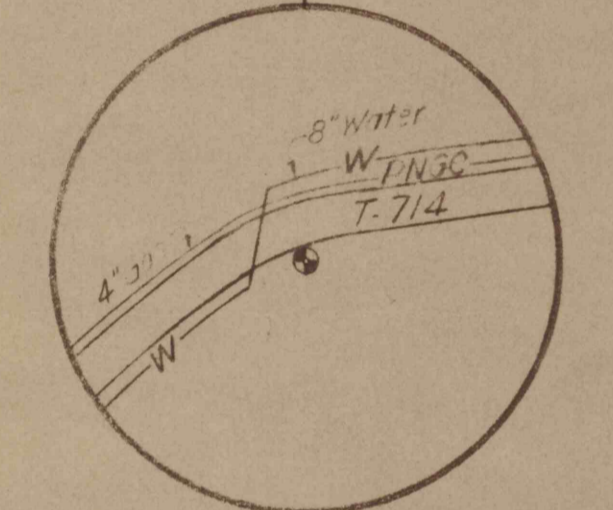
* SEE NOTE SHEET 2 OF 5



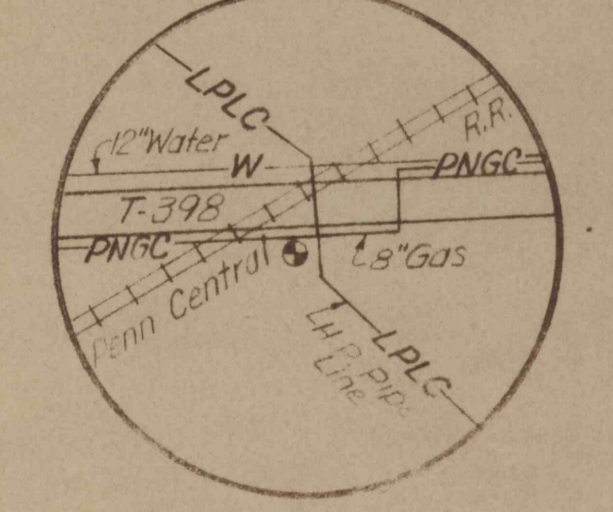
HOLE NO. 1
 APPROX. SURF. EL. 1200
 APPROX. COAL EL. 1050
 EST. DEPTH 150'
 L.R. 64044



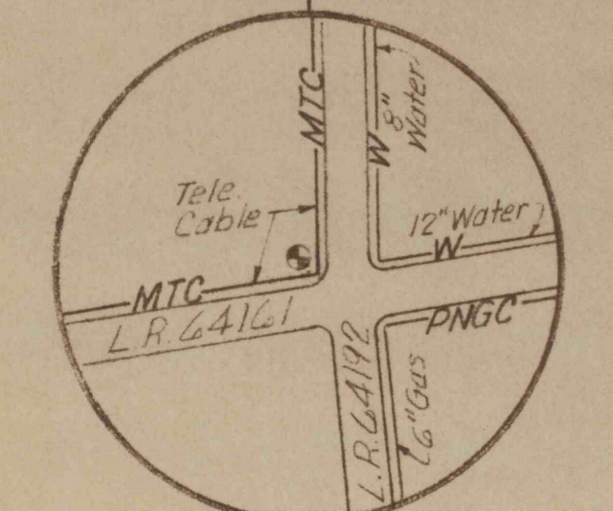
HOLE NO. 1A
 APPROX. SURF. EL. 1060
 APPROX. COAL EL. 1010
 EST. DEPTH 50'
 T-714



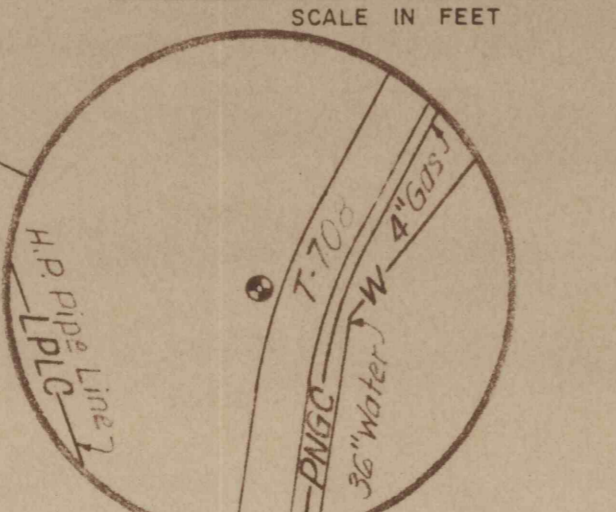
HOLE NO. 1B
 APPROX. SURF. EL. 1000
 APPROX. COAL EL. 960
 EST. DEPTH 40'
 T-398



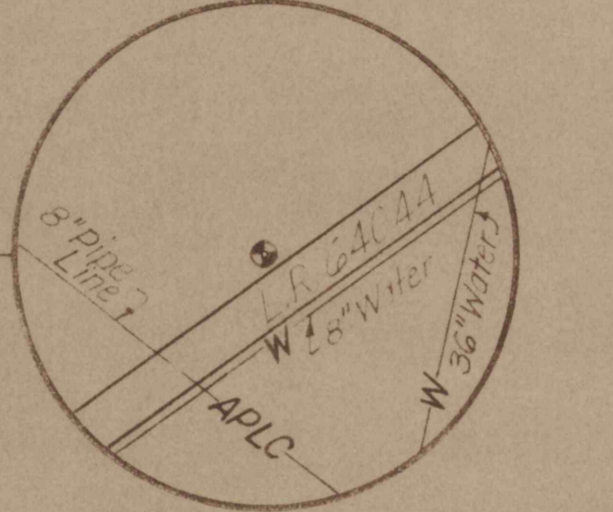
HOLE NO. 5
 APPROX. SURF. EL. 1200
 APPROX. COAL EL. 875
 EST. DEPTH 325'
 L.R. 64161



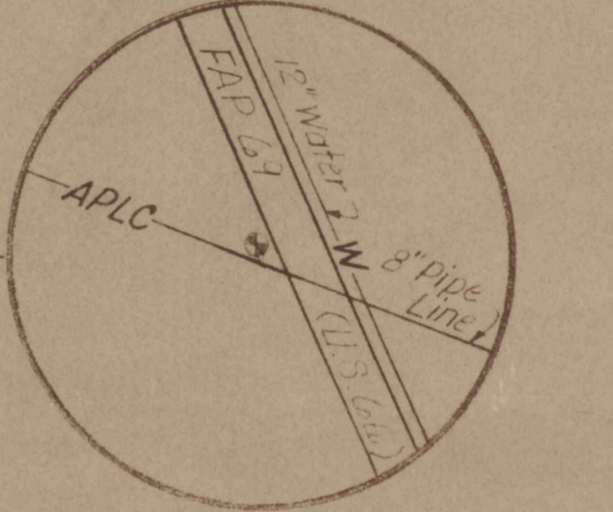
HOLE NO. 4
 APPROX. SURF. EL. 1220
 APPROX. COAL EL. 970
 EST. DEPTH 230'
 T-708



HOLE NO. 3
 APPROX. SURF. EL. 1160
 APPROX. COAL EL. 1100
 EST. DEPTH 60'
 L.R. 64044



HOLE NO. 3A
 APPROX. SURF. EL. 1180
 APPROX. COAL EL. 1155
 EST. DEPTH 25'
 FAP 69 (U.S. 66)

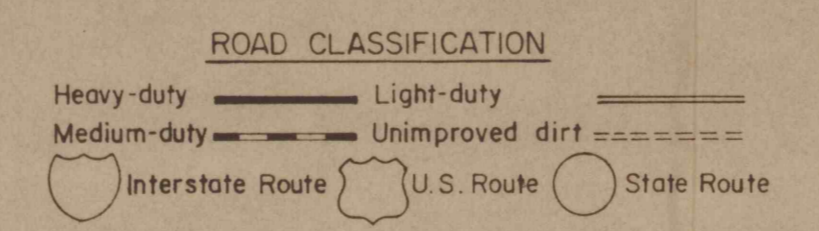


LEGEND

- Proposed Drill Hole
- Outcrop of Pgh. Coal Seam
- Pgh. Coal Contours
- Syncline Axis

NOTE:
 ALL UNDERGROUND FACILITIES SHOWN ARE AT APPROXIMATE LOCATIONS ONLY AND SHOULD BE VERIFIED BY THE DRILLING CONTRACTOR IN THE FIELD PRIOR TO DRILLING OPERATIONS.

NOTE:
 BORING LOCATION BLOW UPS ARE NOT DRAWN TO SCALE.



NO.	DATE	REVISION	APPR.

COMMONWEALTH OF PENNSYLVANIA
 DEPARTMENT OF ENVIRONMENTAL RESOURCES
 OFFICE OF RESOURCES MANAGEMENT

SUBSURFACE EXPLORATION FOR
 ABANDONED MINE PROJECTS
 IRWIN SYNCLINE BASIN

WESTMORELAND COUNTY, PENNA.
 PROJECT NO. SL 103-5-101.5

**DRILL HOLE
 DETAIL PLAN**

Swindell-Dressler Company
 A Division of Pullman Incorporated
 PITTSBURGH PENNSYLVANIA

DRAWN BY B.M.C.	DATE 5-22-75	DRAWING NO. SL 103-5-101.5
CHECKED BY R.C.O.	SCALE 1" = 2000'	3 OF 5