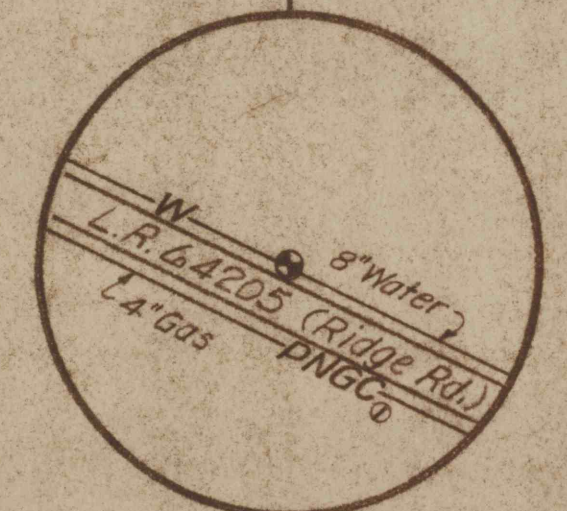
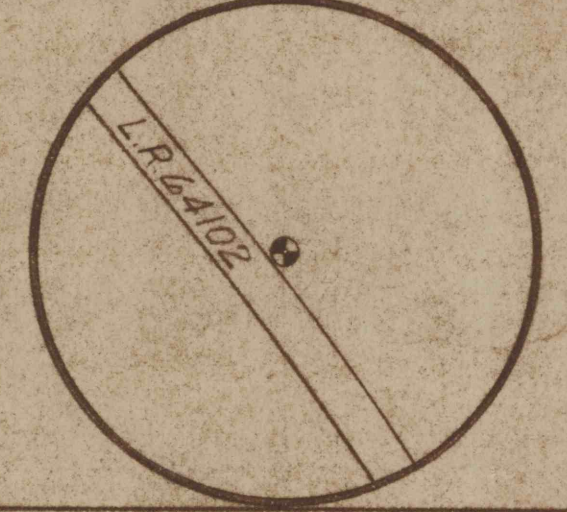


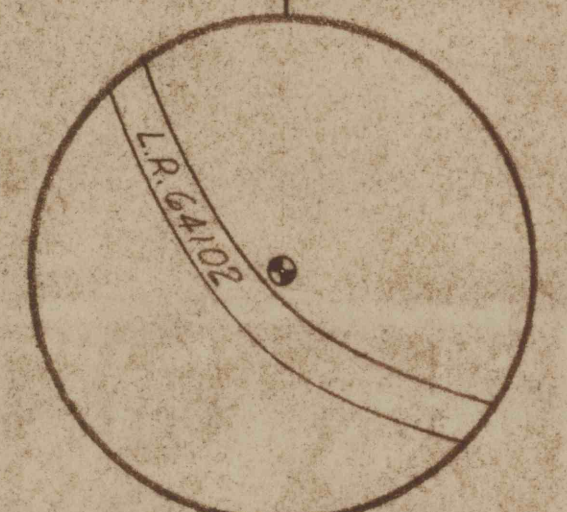
HOLE NO. 8
 APPROX. SURF. EL. 1140
 APPROX. COAL EL. 920
 EST. DEPTH 220'
 L.R. 64205



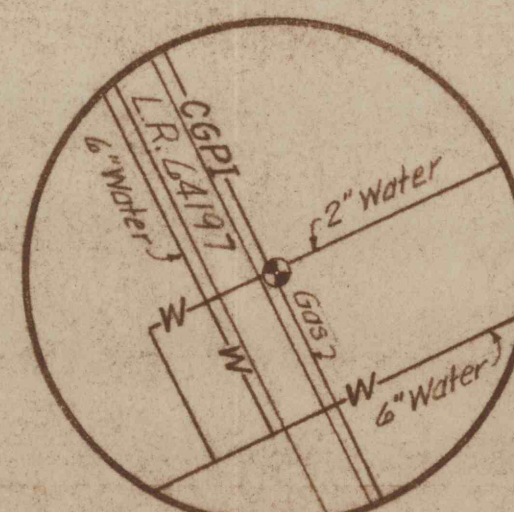
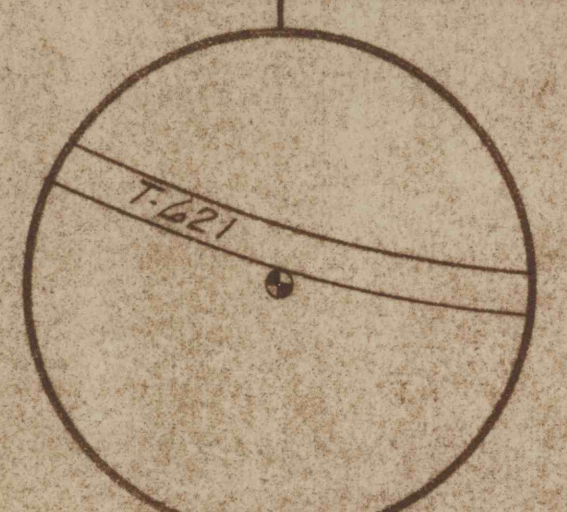
HOLE NO. 8A
 APPROX. SURF. EL. 900
 APPROX. COAL EL. 790
 EST. DEPTH 110'
 L.R. 64102



HOLE NO. 9
 APPROX. SURF. EL. 1000
 APPROX. COAL EL. 765
 EST. DEPTH 235'
 L.R. 64102

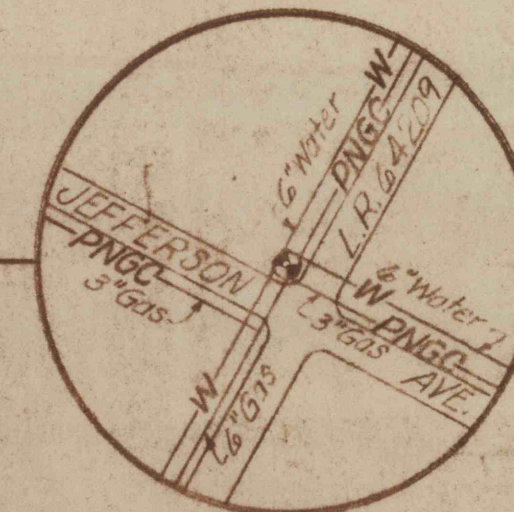


HOLE NO. 9A
 APPROX. SURF. EL. 940
 APPROX. COAL EL. 795
 EST. DEPTH 145'
 T-621

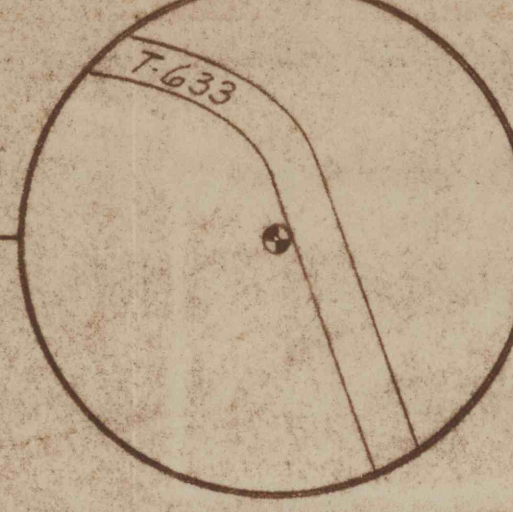


HOLE NO. 7
 APPROX. SURF. EL. 1200
 APPROX. COAL EL. 915
 EST. DEPTH 285'
 L.R. 64197

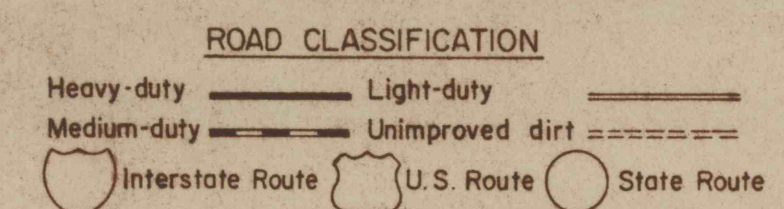
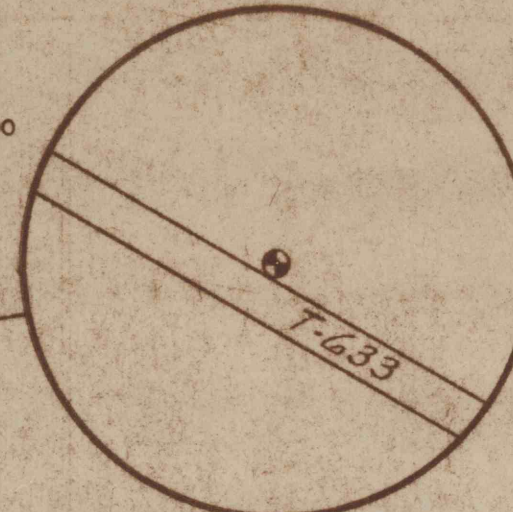
HOLE NO. 6
 APPROX. SURF. EL. 1005
 APPROX. COAL EL. 935
 EST. DEPTH 70'
 L.R. 64209



HOLE NO. 10
 APPROX. SURF. EL. 960
 APPROX. COAL EL. 650
 EST. DEPTH 300'
 T-633



HOLE NO. 10A
 APPROX. SURF. EL. 1000
 APPROX. COAL EL. 650
 EST. DEPTH 350'
 T-633



LIST OF UTILITIES

PNGC - PEOPLES NATURAL GAS COMPANY
 Contact: Mr. Ron Myers
 P.O. Box 21-P, R.D. 3
 Greensburg, Pa. 15601
 Phone: (412) 834-9120

CGPI - COLUMBIA GAS OF PENNSYLVANIA, INC.
 Contact: Plant Foreman
 121 S. Second Street
 Jettette, Pa. 15644
 Phone: (412) 527-1528
 Call At Least 3 Days Prior To Drilling

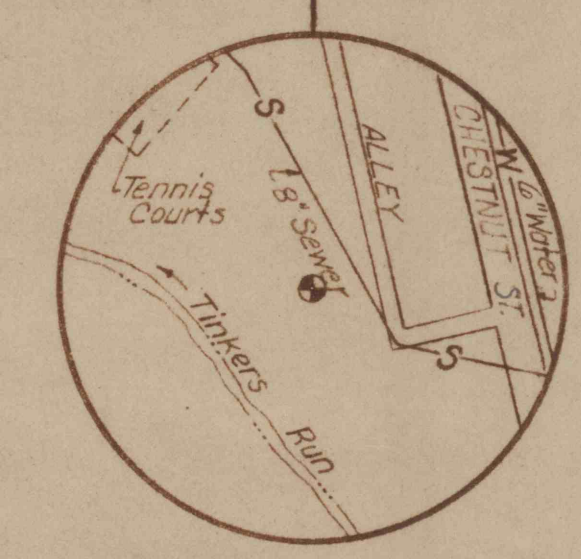
W - MUNICIPAL AUTHORITY OF WESTMORELAND COUNTY
 Contact: Mr. Lester C. Shrader,
 Distribution Superintendent
 P.O. Box 730
 Greensburg, Pa. 15601
 Phone: (412) 834-6500 Ext. 30

S - BOROUGH OF IRWIN
 Contact: Mr. Joseph R. Plues, Manager
 424 Main Street
 Irwin, Pa. 15642
 Phone: (412) 863-0630

PNGC - PEOPLES NATURAL GAS COMPANY
 Contact: Mr. Charles L. Fields
 1201 Pitt Street
 Pittsburgh, Pa. 15221
 Phone: (412) 371-7717
 Refer Serial #5147512

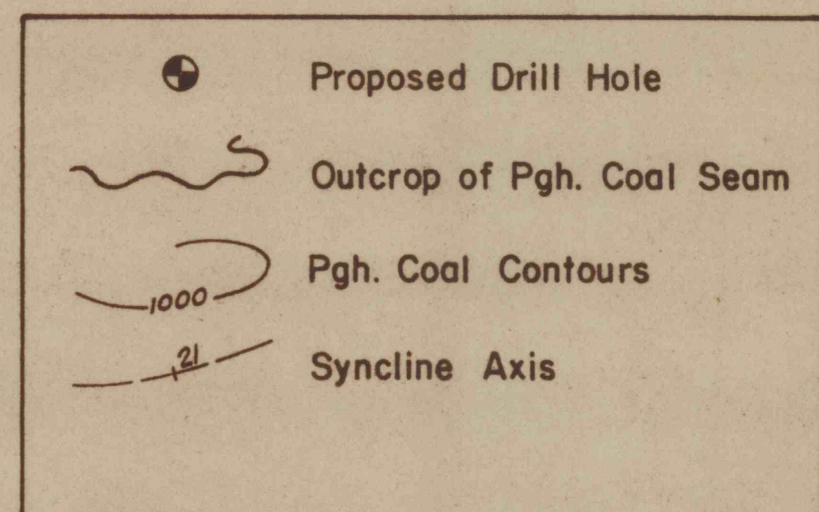
* - SEE NOTE SHEET 2 OF 5

HOLE NO. 7A
 APPROX. SURF. EL. 940
 APPROX. COAL EL. 865
 EST. DEPTH 75'
 IRWIN BOROUGH
 MUNICIPAL PLAYGROUND



NOTE:
 ALL UNDERGROUND FACILITIES SHOWN ARE AT APPROXIMATE LOCATIONS ONLY AND SHOULD BE VERIFIED BY THE DRILLING CONTRACTOR IN THE FIELD PRIOR TO DRILLING OPERATIONS.

LEGEND



NO.	DATE	REVISION	APPR.

COMMONWEALTH OF PENNSYLVANIA
 DEPARTMENT OF ENVIRONMENTAL RESOURCES
 OFFICE OF RESOURCES MANAGEMENT

SUBSURFACE EXPLORATION FOR
 ABANDONED MINE PROJECTS
 IRWIN SYNCLINE BASIN

WESTMORELAND COUNTY, PENNA.
 PROJECT NO. SL 103-5-101.5

**DRILL HOLE
 DETAIL PLAN**

Swindell-Dressler Company
a Pullman Incorporated

PITTSBURGH		PENNSYLVANIA	
DRAWN BY	DATE	DRAWING NO.	SL 103-5-101.5 4 OF 5
B.M.C.	5-22-75		
CHECKED BY	SCALE		
R.C.O.	1" = 2000'		