

GEORGE SLOUGH

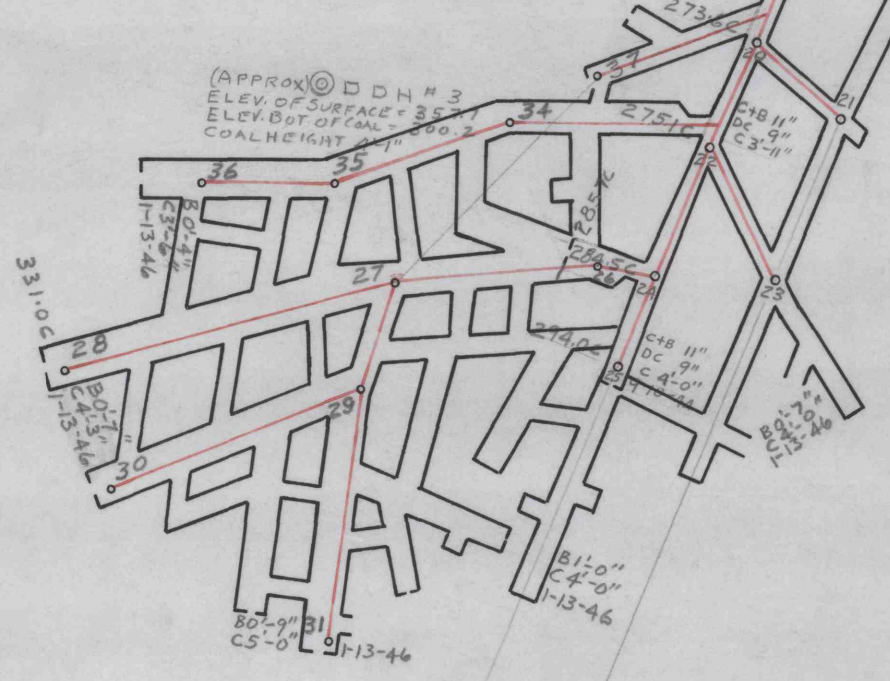
GERHART

RD. 1

(APPROX) DDH #2
ELEV. OF SURFACE = 290.8
ELEV. BOT. OF COAL = 242.0
COAL HEIGHT = 3"

MILLS No 4 MINE
PROPOSED HOLES
ELEV. OF SURFACE = 283.3
ELEV. BOT. OF COAL = 213
COAL HEIGHT = 5'-4"

(APPROX) DDH #3
ELEV. OF SURFACE = 280.7
ELEV. BOT. OF COAL = 237
COAL HEIGHT = 4'-3"



(APPROX) DDH #6
ELEV. OF SURFACE = 390.8
ELEV. BOT. OF COAL = 273.7
COAL HEIGHT = 2'-4"

(APPROX) DDH #4
ELEV. OF SURFACE = 435.3
ELEV. BOT. OF COAL = 417.3
COAL HEIGHT = 4'-0"

(APPROX) DDH #5
ELEV. OF SURFACE = 438.8
ELEV. BOT. OF COAL = 411.1
COAL HEIGHT (BONEY) 1'-0"

PETER BRUTZMAN

OUTCROP OF A SEAM

APPROXIMATE LINE OF FAULT

EXTREME OUTCROP OF SEAM A

SEAM A

APPROXIMATE LINE OF FAULT

APPROXIMATE LINE OF FAULT

DANIEL WITMER TRACT

- PHILIPSBURG COAL & LAND CO. -

7051