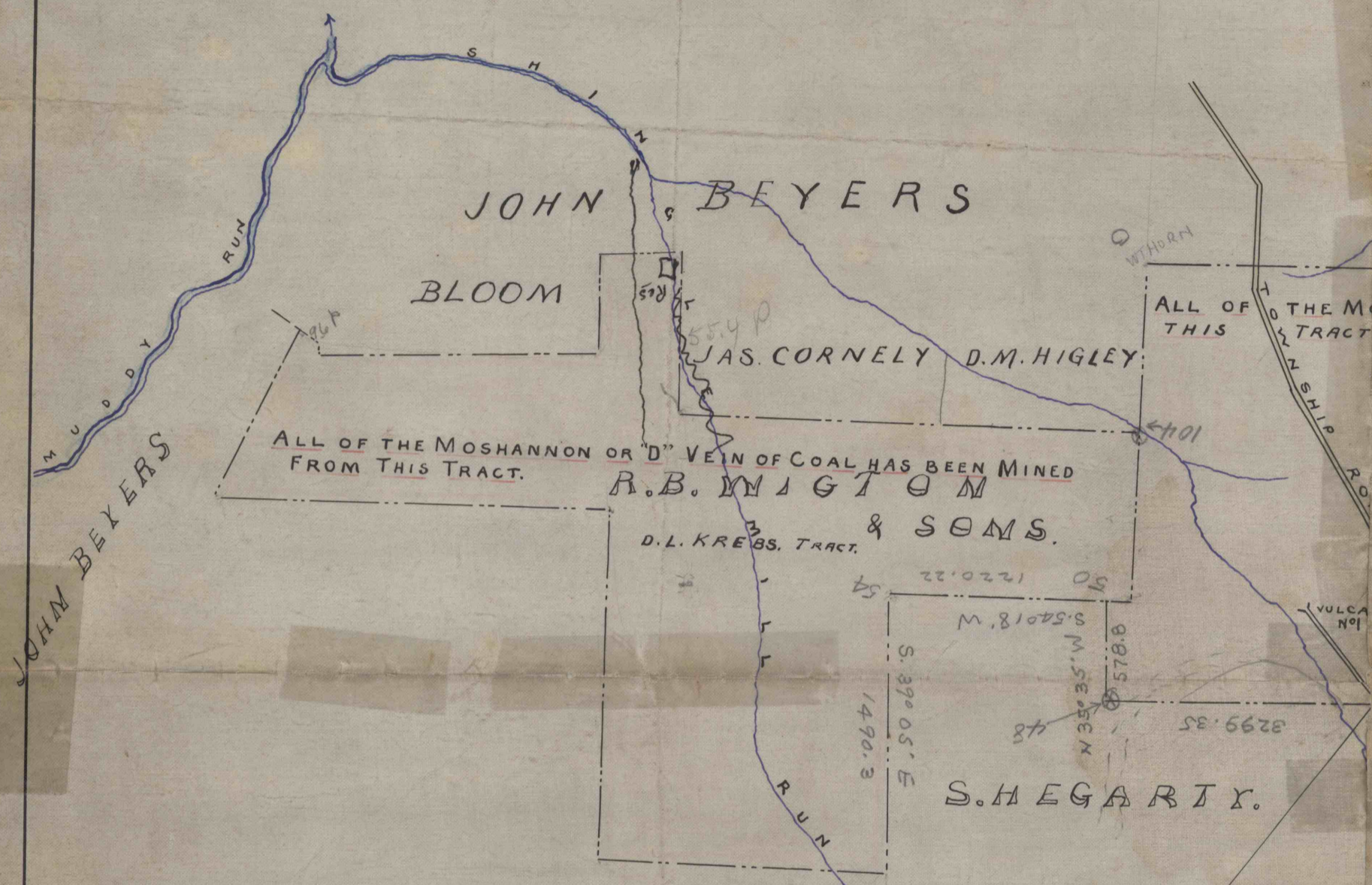


205502
205506
205508

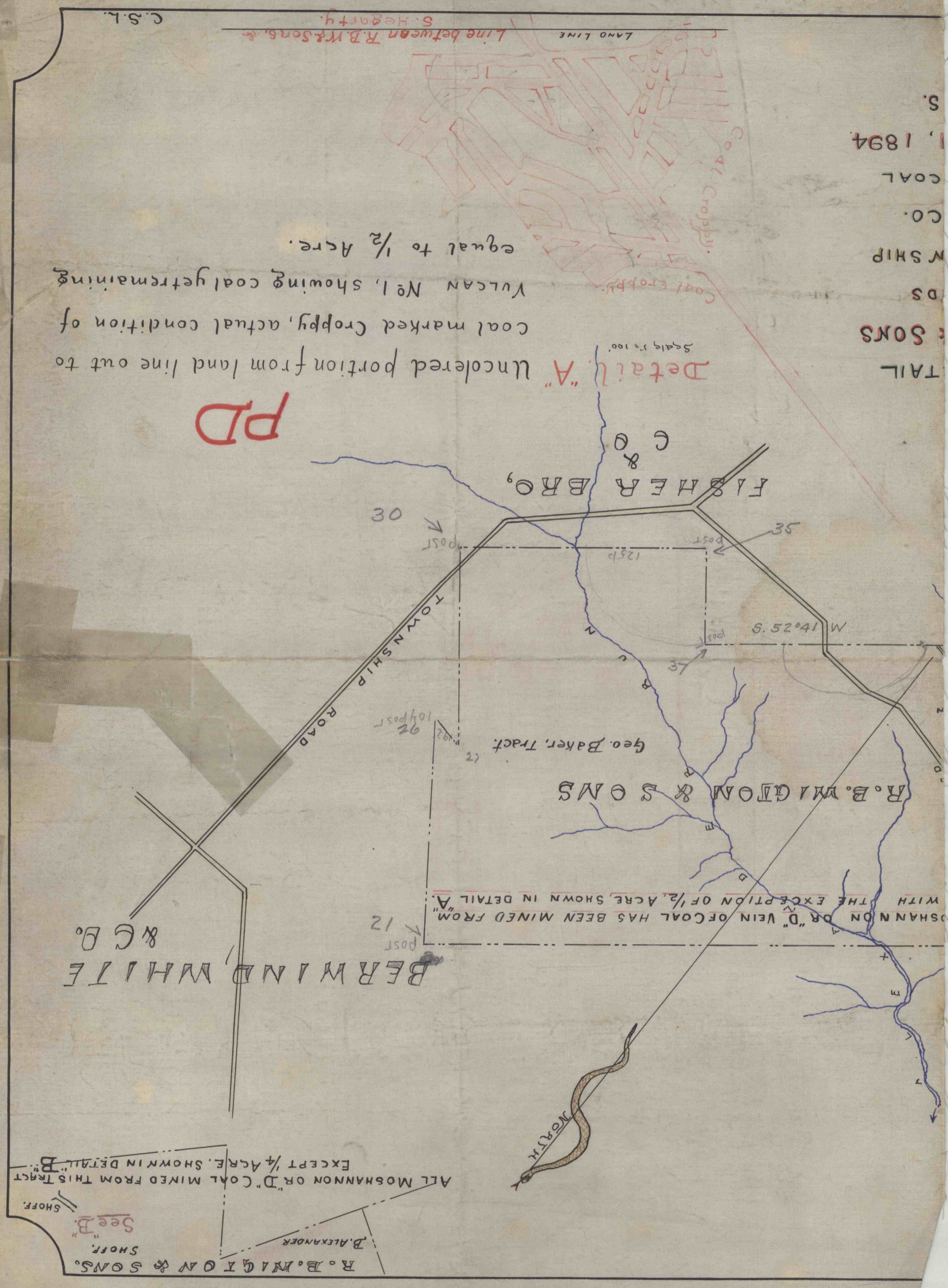


Detail "B" Uncolored portion from face to croppy coal actual condition of SHOFF MINES showing $\frac{1}{4}$ Acre unmined.

5872 OR
6298

PLAN
IN
GENERAL AND DE
of
R. B. WIGTON & SONS
COAL LAND
IN
BIGLER TOWNSHIP
CLEARFIELD
PA.
TOTAL MARKETABLE
"D" VEIN
UNMINED DEC.
 $\frac{75}{100}$ ACRE

Scale 200' = 1" = 800'



B. W. WHITE & CO.
ALL MOSHANNON OR "D" VEIN OF COAL MINED FROM THIS TRACT EXCEPT $\frac{1}{4}$ ACRE SHOWN IN DETAIL "B".
See "B"
SHOFF
D. ALEXANDER
R. B. WIGTON & SONS.

Uncolored portion from land line out to coal marked croppy, actual condition of Vulcan No 1, showing coal yet remaining equal to $\frac{1}{2}$ Acre.

PD

Detail "A"

TAIL
SONS
DS
NSHIP
CO.
COAL
S. 1894

WITH THE EXCEPTION OF $\frac{1}{2}$ ACRE SHOWN IN DETAIL "A"

C.S.L.
Line between R.B. W. Sons & S. Hegarty.
LAND LINE