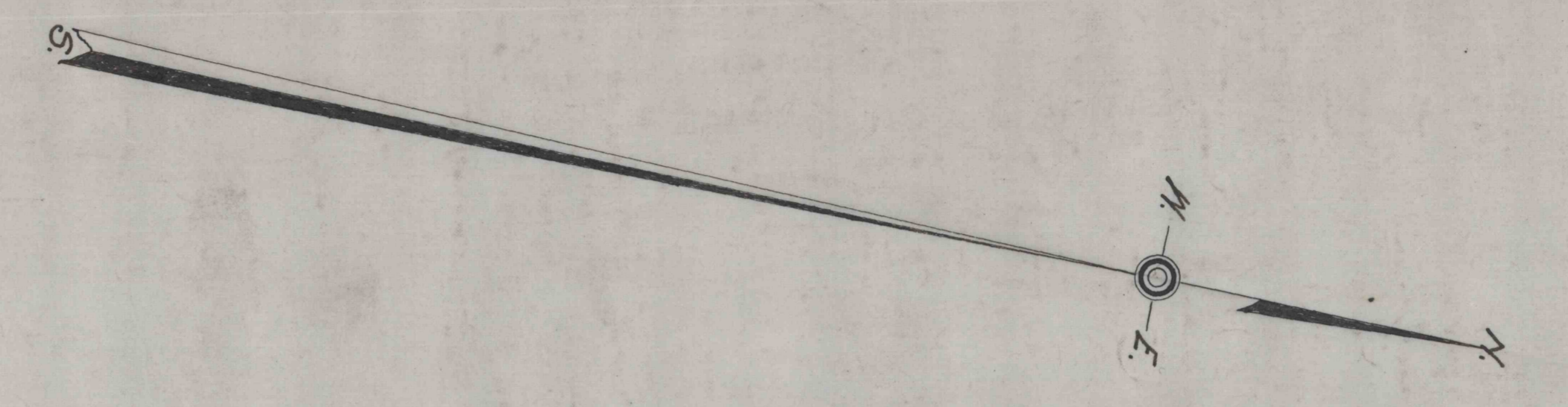


Geo. S. Good Fire Brick Co.,
(Bickford Fire Brick Co.)
MAP OF
PROPOSED TRAM WAY
LUMBER CITY

CLEARFIELD PA.
Nov. 23-1917.

SCALE 1" = 50'

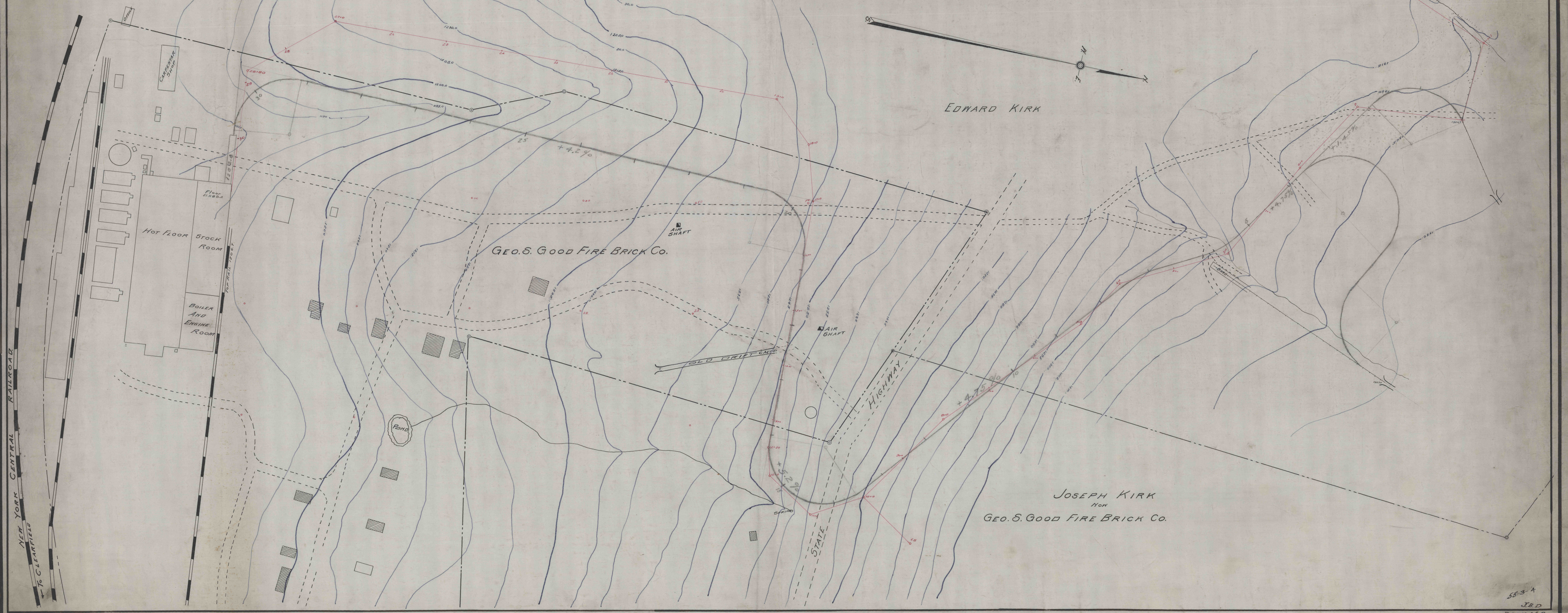
OFFICE E. M. HESS, ENGINEER.



EDWARD KIRK

Geo. S. Good Fire Brick Co.

JOSEPH KIRK
Now
Geo. S. Good Fire Brick Co.



NEW YORK CENTRAL RAILROAD
TO CLEARFIELD