

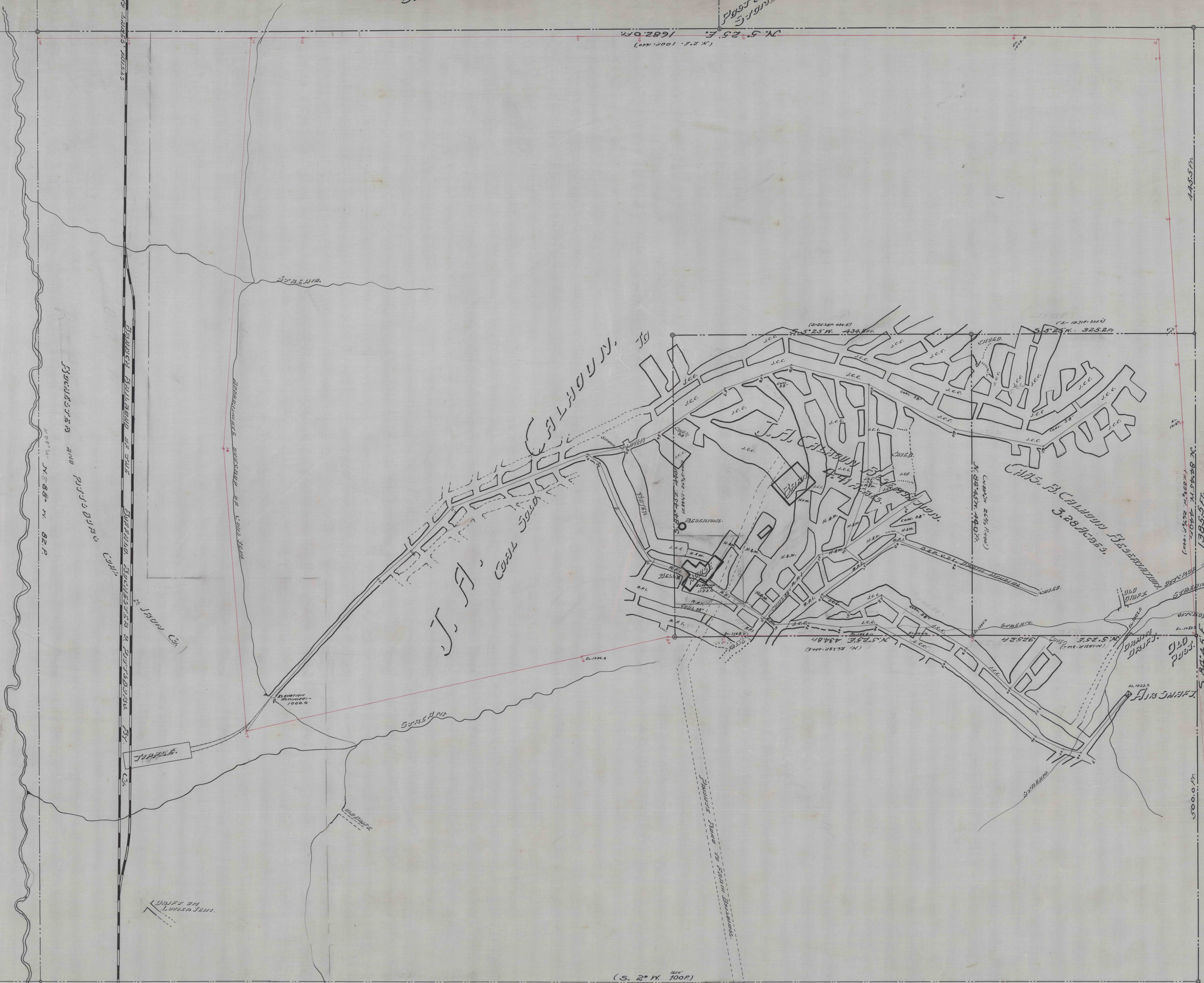
J. A. CALHOUN

J. A. CALHOUN

JOHN BAYNE

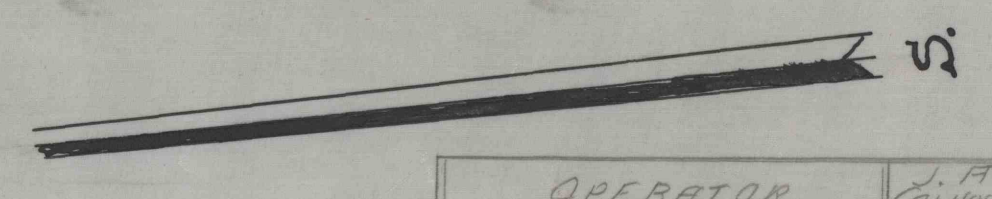
BD

N 5° 25' W. 1682.0 FT.  
(CONV. 1000' HORIZ.)



PD 5052

MAP OF LANDS OF  
 - J. A. CALHOUN -  
 - CHAS. B. CALHOUN -  
 WASHINGTON TRIP. JEFFERSON CO.  
 - PENN. -  
 SHOWN & COAL MINED FROM  
 - RESERVATIONS -  
 - BY -



OPERATOR	J. A. CALHOUN	CHAS. B. CALHOUN	TOTAL
JEFFERSON COAL CO.	6,698	2,552	9,250
P. & R. C. & I. CO.	1,238	100	1,338
HARRIS & MCDONALD	2,004	00	2,004
TOTALS	9,940	2,652	12,592

JEFFERSON COAL COMPANY     J.C.C. 1840-1841  
 ROCHESTER & PITTSBURGH C. & I. CO.     R.P.I. 1841  
 HARRIS & MCDONALD     H.M. 1841

SCALE 1"=50'

SURVEY MADE

OFFICE OF G. W. HESS, CIVIL ENGINEER

CLEARFIELD CO. PA. NOV. 23. 1884

VILLAGE OF JEFFERSON

Handwritten signature or initials in the bottom right corner.