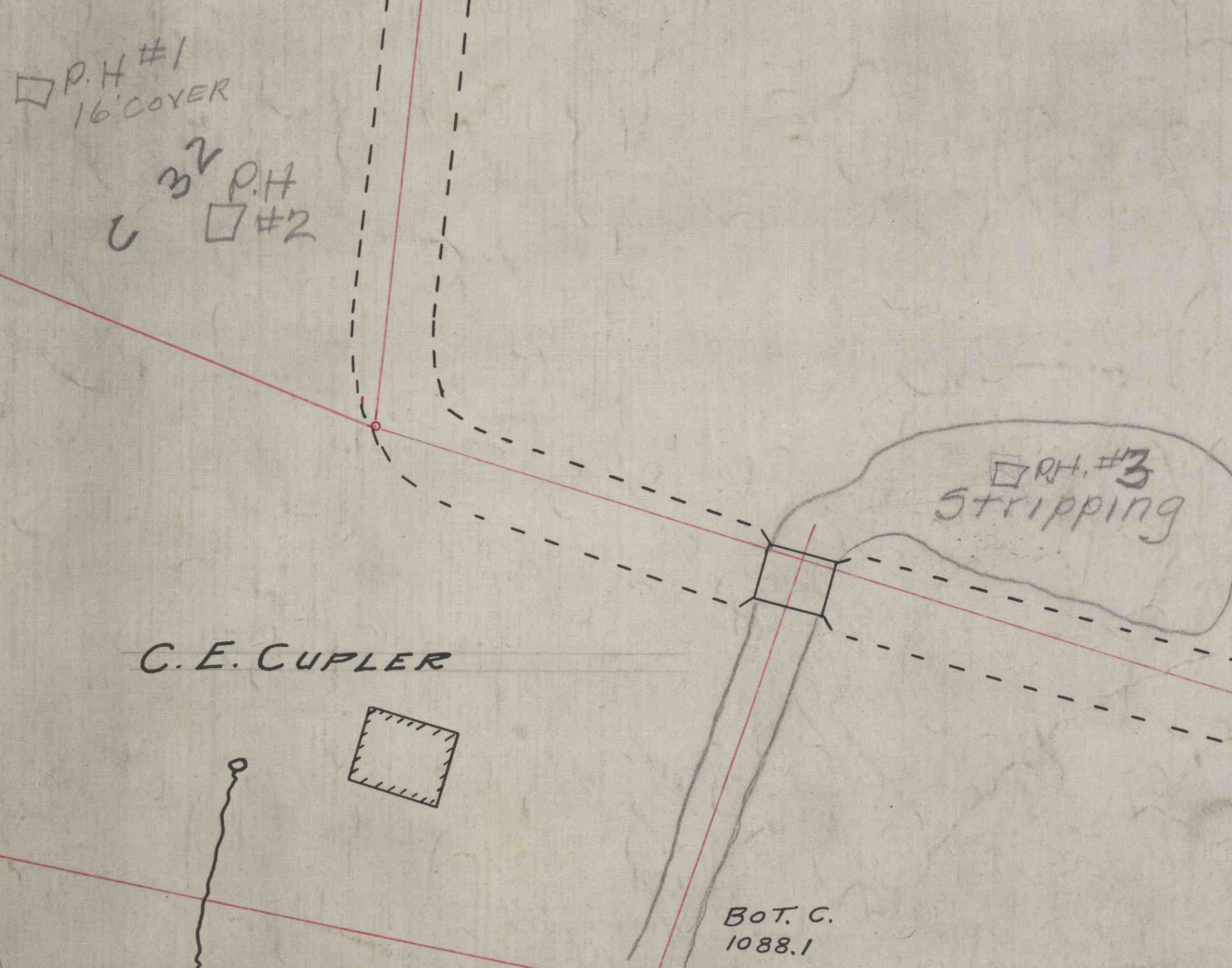
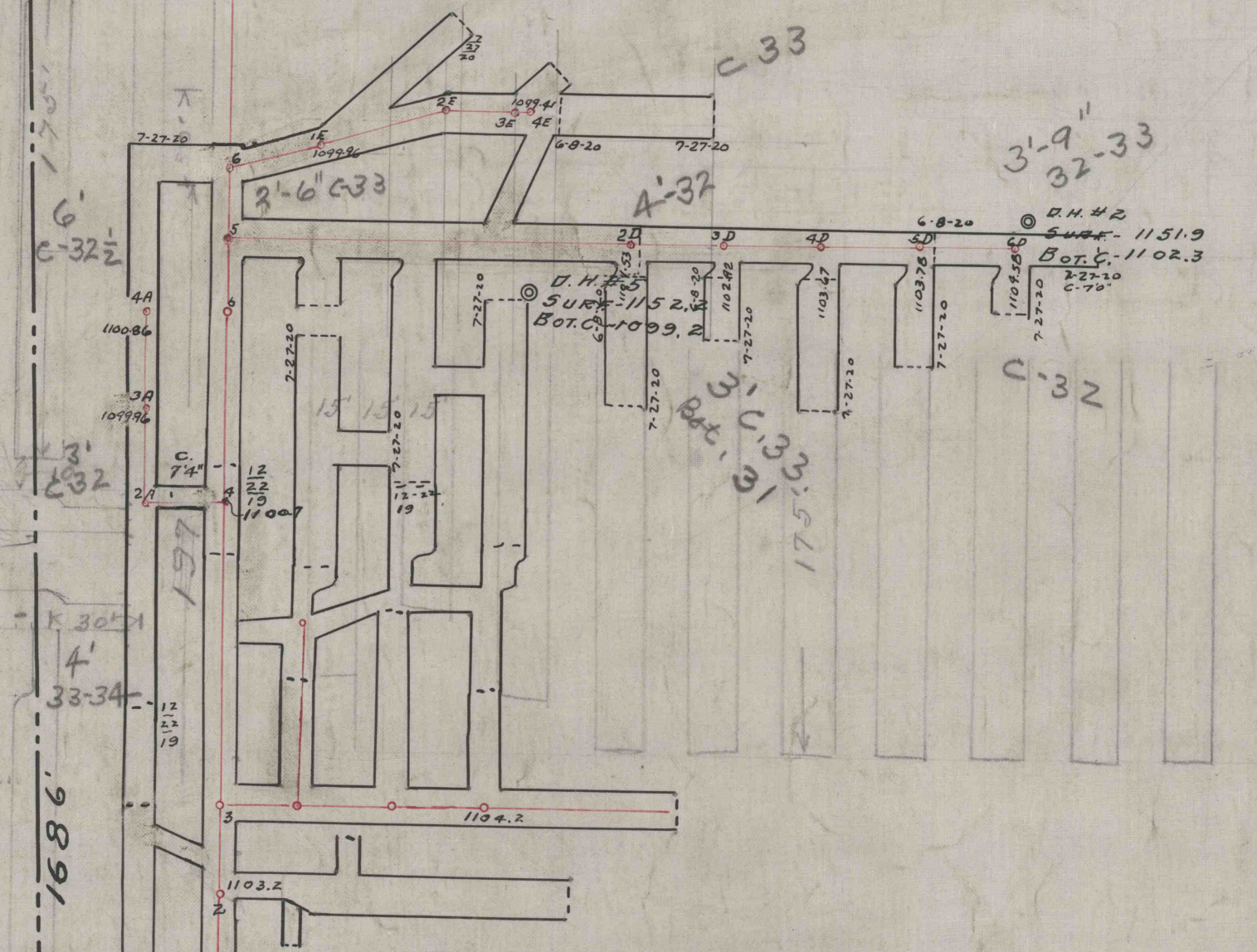
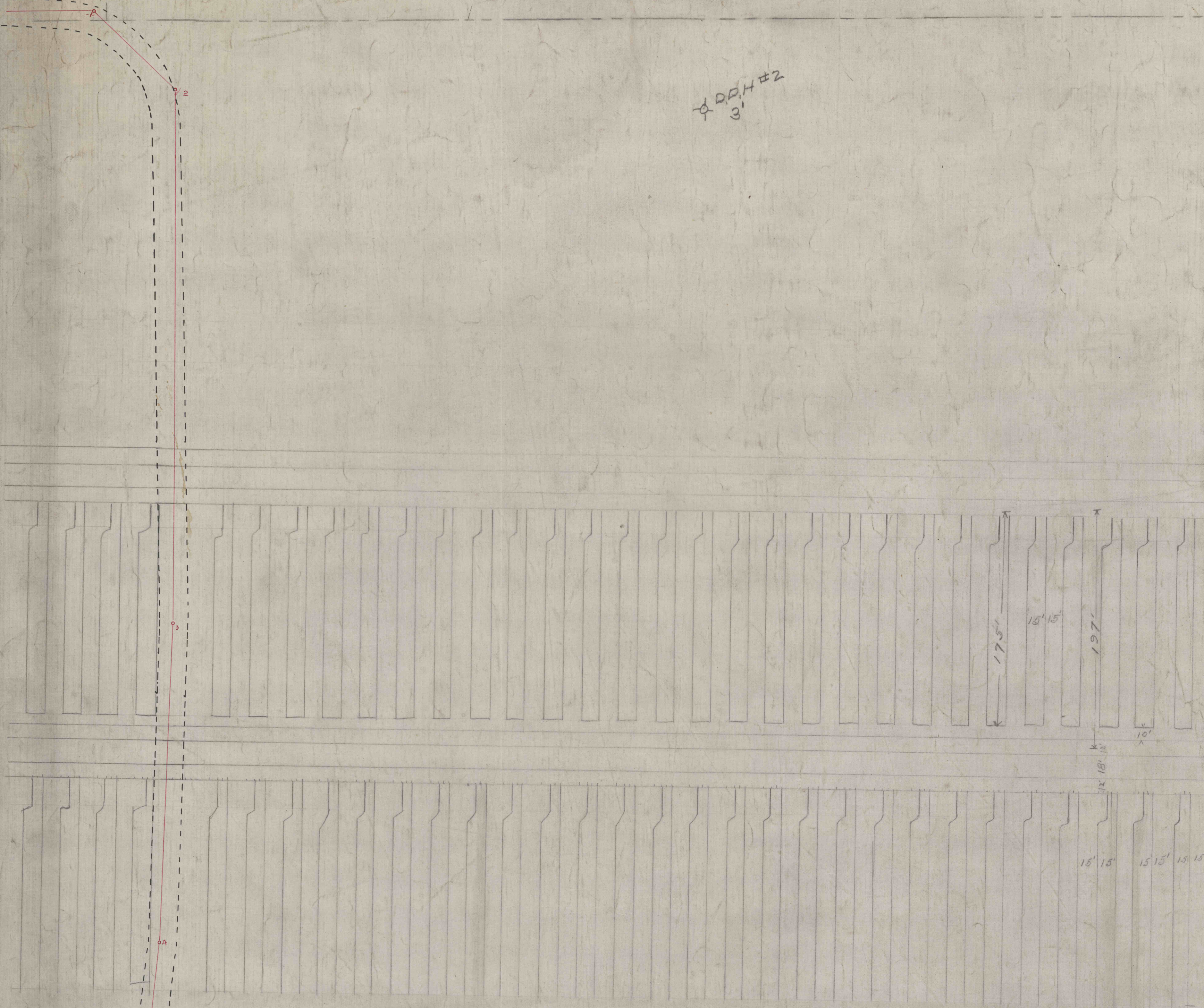


E. W. HOLLOPETER.

15' 0" TOP OF 5' CLAY.

DDH #2
3'

B.H.#4
SURF. 1131.1
BOT. C. 1084.1



SARAH JANE SWOOPE, HEIRS.

MARGARET PENTZ TRACT.

CRESCENT REFRACTORIES CO. CURWENSVILLE, CLEARFIELD COUNTY, PA. ENGINEERING DEPARTMENT		
PENTZ MINE UNION TOWNSHIP		
DRAWN <i>L.B.D.</i>	SCALE 1" = 50'	1010-N
CHECKED	DATE 10-10-13	50-2-4
REFERENCE	ORDER	

50-2-4