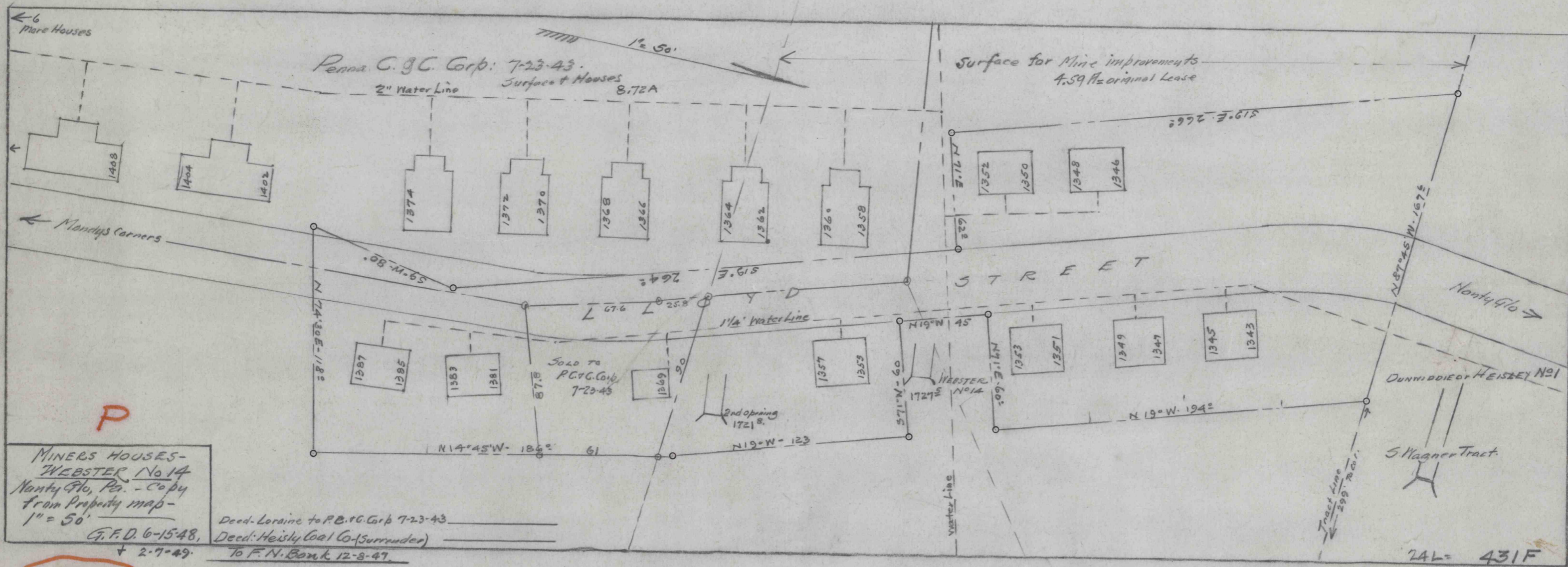


4053

4-023



P
 MINERS HOUSES-
 WEBSTER NO 14
 Nanty Glo, Pa. - Copy
 from Property map -
 1" = 50'

Deed - Loraine to P.C. & G. Corp 7-23-43
 Deed: Heisty Coal Co (Surrender)
 To F.N. Bank 12-8-47
 G.F.D. 6-15-48,
 + 2-7-49.

C.D. 789